

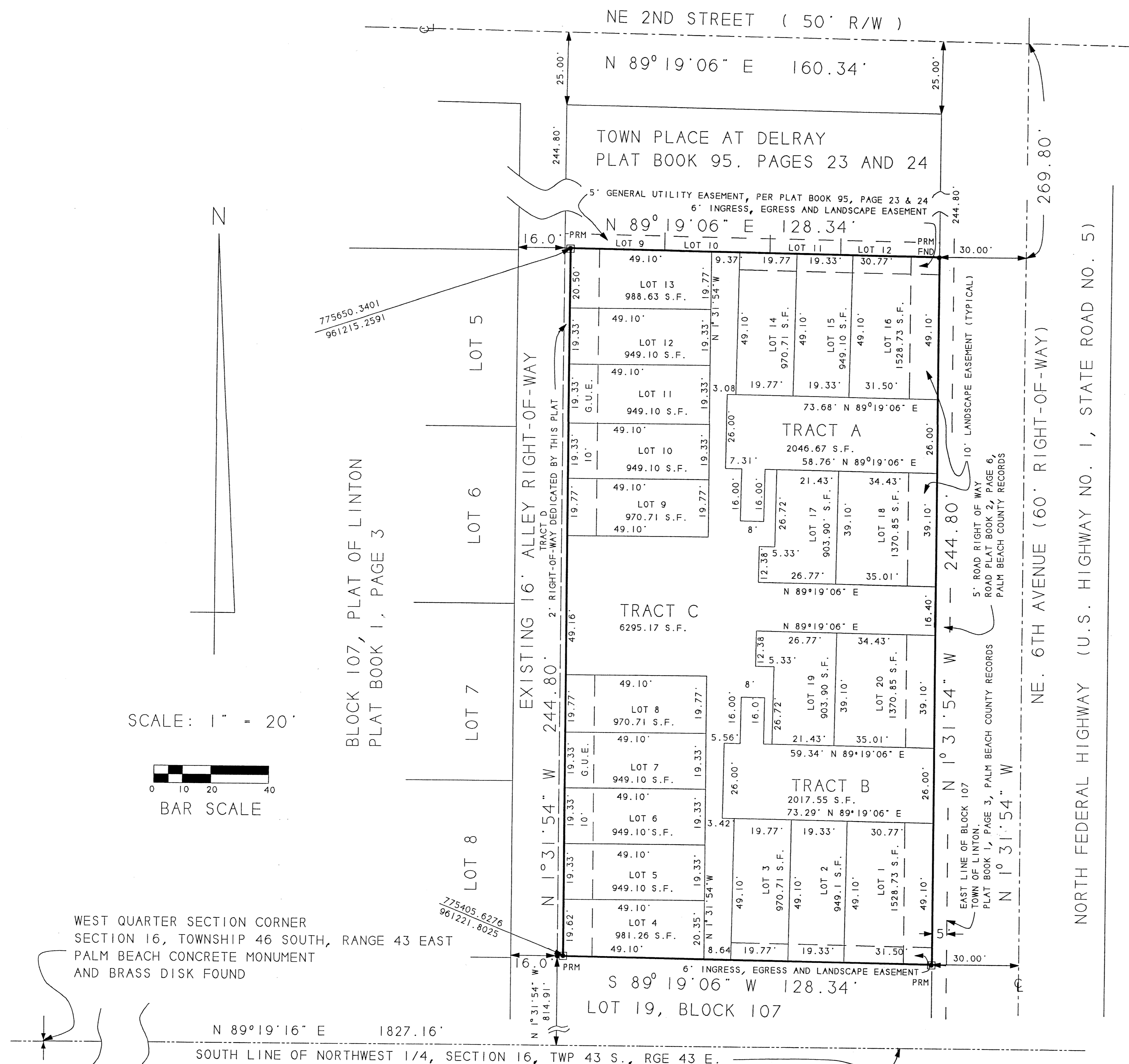
PORTA AL MARE

REPLAT OF LOTS 15, 16, 17 AND 18, BLOCK 107, LESS THE EASTERLY 5.00 FEET,
PLAT OF LINTON, AS RECORDED IN PLAT BOOK 1, PAGE 3.

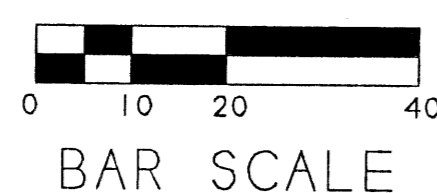
SECTION 16, TOWNSHIP 46 SOUTH, RANGE 43 EAST
DELRAY BEACH, PALM BEACH COUNTY, FLORIDA

JANUARY 2004 PAGE 2 OF 2

PREPARED BY: BURLISON A. GENTRY, P.S.M. NO. 2580
GENTRY ENGINEERING AND LAND SURVEYING, INC.
PO BOX 243, DELRAY BEACH, FLORIDA



SCALE: 1" = 20'



WEST QUARTER SECTION CORNER
SECTION 16, TOWNSHIP 46 SOUTH, RANGE 43 EAST
PALM BEACH CONCRETE MONUMENT
AND BRASS DISK FOUND

- SURVEYOR'S NOTES AND LEGEND:
- INDICATES 5/8" IRON ROD FOUND, NO IDENTIFICATION. ENCASED IN CONCRETE.
 - ◻ PRM INDICATES 4" X 4" CONCRETE MONUMENT SET, WITH DISK MARKED, PSM NO. 2580
 - BEARINGS ARE BASED ON A TRUE MERIDIAN, WITH N 1° 31' 54" W. RUNNING PARALLEL WITH THE CENTERLINE OF U.S. HWY. NO. 1, NE 6TH AVENUE (NORTH FEDERAL HWY.)
 - INDICATES NOT TO SCALE
 - INDICATES 1/4 SECTION LINE
 - 949.10 S.F. INDICATES LOT AND TRACT AREA IN SQUARE FEET.
 - THERE MAY BE ADDITIONAL RESTRICTIONS THAT ARE NOT RECORDED ON THIS PLAT THAT MAY BE FOUND IN THE PUBLIC RECORDS OF PALM BEACH COUNTY, FLORIDA.
 - THE CITY OF DELRAY BEACH IS HEREBY GRANTED THE RIGHT OF ACCESS FOR EMERGENCY AND MAINTENANCE PURPOSES.
 - THE COORDINATES ON THE WEST BOUNDARY CORNERS ARE TIED TO 83(90), FLORIDA EAST ZONE, STATE PLANE COORDINATES.
 - THERE SHALL BE NO BUILDINGS OR ANY KIND OF CONSTRUCTION PLACED ON DRAINAGE OR UTILITY EASEMENTS, CONSTRUCTION OR LANDSCAPING UPON MAINTENANCE OR MAINTENANCE ACCESS EASEMENTS MUST BE IN CONFORMANCE WITH ALL BUILDING AND ZONING CODES AND/OR ORDANANCES OF THE CITY OF DELRAY BEACH.
 - THERE SHALL BE NO TREES OR SHRUBS PLACED ON UTILITY EASEMENTS WHICH ARE PROVIDED FOR WATER AND SEWER USE OR UPON DRAINAGE EASEMENTS, LANDSCAPING OR OTHER UTILITY EASEMENTS SHALL BE ALLOWED ONLY AFTER CONSENT OF ALL THE UTILITY COMPANIES OCCUPYING SAME.
 - G.U.E. INDICATES GENERAL UTILITY EASEMENT
 - ALL INTERIOR ANGLES OF BLOCKS AND TRACTS ARE 90° EXCEPT AS NOTED WITH BEARINGS ON INTERIOR LINES.