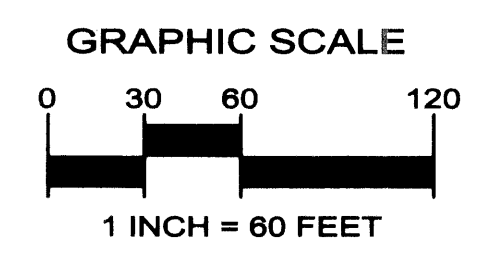


INDEX SHEET MAP NOT TO SCALE

# OLD PALM PLAT FOUR

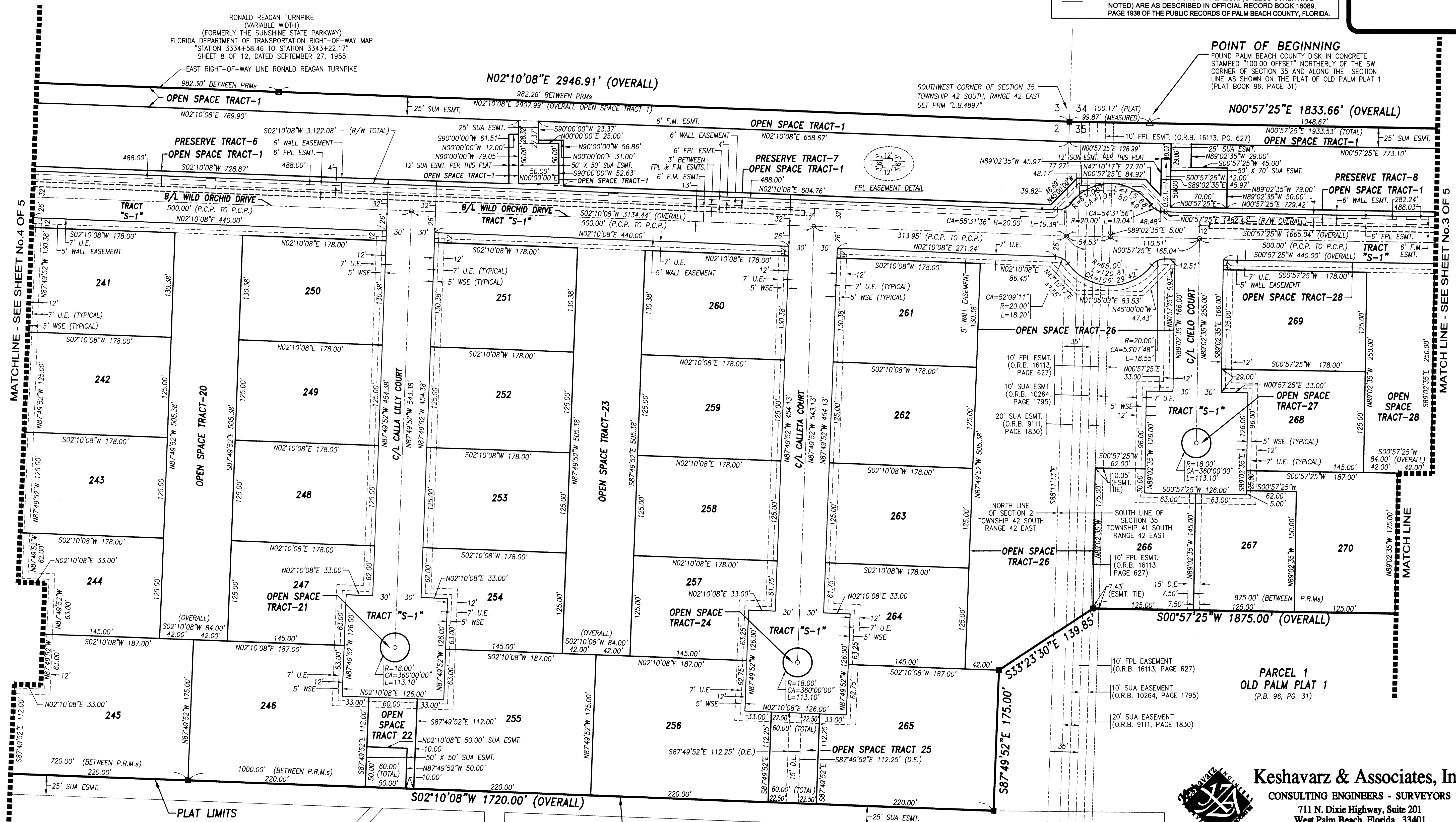
A REPLAT OF A PORTION OF PARCEL 1, OLD PALM PLAT 1 AS RECORDED IN PLAT BOOK 96, PAGES 31 THROUGH 34, PUBLIC RECORDS OF PALM BEACH COUNTY, FLORIDA LYING IN THE SOUTHWEST ONE-QUARTER OF SECTION 35, TOWNSHIP 41 SOUTH, RANGE 42 EAST, AND THE WEST ONE-HALF OF SECTION 2, TOWNSHIP 42 SOUTH, RANGE 42 EAST, CITY OF PALM BEACH GARDENS, PALM BEACH COUNTY, FLORIDA SHEET No.2 OF 5 FEBRUARY 2004



**SYMBOLS LEGEND**

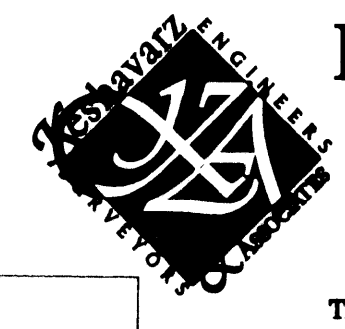
■	SET PERMANENT REFERENCE MONUMENT (P.R.M.) "L.B.4897"	R	RADIUS
○	PERMANENT CONTROL POINT (P.C.P.)	CA	CENTRAL ANGLE
—	UTILITY EASEMENT	L	ARC LENGTH
—	DRAINAGE EASEMENT	CHB	CHORD BEARING
—	WATER LINE EASEMENT	CH	CHORD
—	SEWER LINE EASEMENT	ESMT.	EASEMENT
—	WATER AND SEWER EASEMENT		
—	SEACOAST UTILITY AUTHORITY		
—	SEACOAST UTILITY AUTHORITY EASEMENT		
—	FORCE MAIN		
—	FLORIDA POWER AND LIGHT		
—	OFFICIAL RECORD BOOK		
—	PAGE		
—	RIGHT-OF-WAY		
—	CENTERLINE		
—	OPEN SPACE TRACT		
—	INTERSECTION		
—	BASELINE		
—	CHANGE IN DIRECTION		
—	PROFESSIONAL SURVEYOR AND MAPPER		
—	PERMANENT CONTROL POINT		
—	FOUND PERMANENT REFERENCE MONUMENT (P.R.M.) "L.B.4431"		

**NOTE:** THE SUA EASEMENTS SHOWN HEREON, (UNLESS OTHERWISE NOTED) ARE AS DESCRIBED IN OFFICIAL RECORD BOOK 16089, PAGE 1938 OF THE PUBLIC RECORDS OF PALM BEACH COUNTY, FLORIDA.



PARCEL 1 - OLD PALM PLAT 1 (P.B. 96, PG. 31)

PARCEL 1 - OLD PALM PLAT 1 (P.B. 96, PG. 31)



**Keshavarz & Associates, Inc.**  
CONSULTING ENGINEERS - SURVEYORS  
711 N. Dixie Highway, Suite 201  
West Palm Beach, Florida 33401  
Tel: (561) 689-8600 Fax: (561) 689-7476 LB 4897  
THIS INSTRUMENT WAS PREPARED BY MICHAEL K. HORAN SR., PSM  
PROFESSIONAL SURVEYOR AND MAPPER NO. 5494  
IN THE OFFICES OF KESHAVARZ & ASSOCIATES, INC.  
\\K&A\SU\770\_OLDPALM\_PLAT\dwg\770\_PLAT\_FOUR.dwg 3/1/2004 10:35:48 AM EST