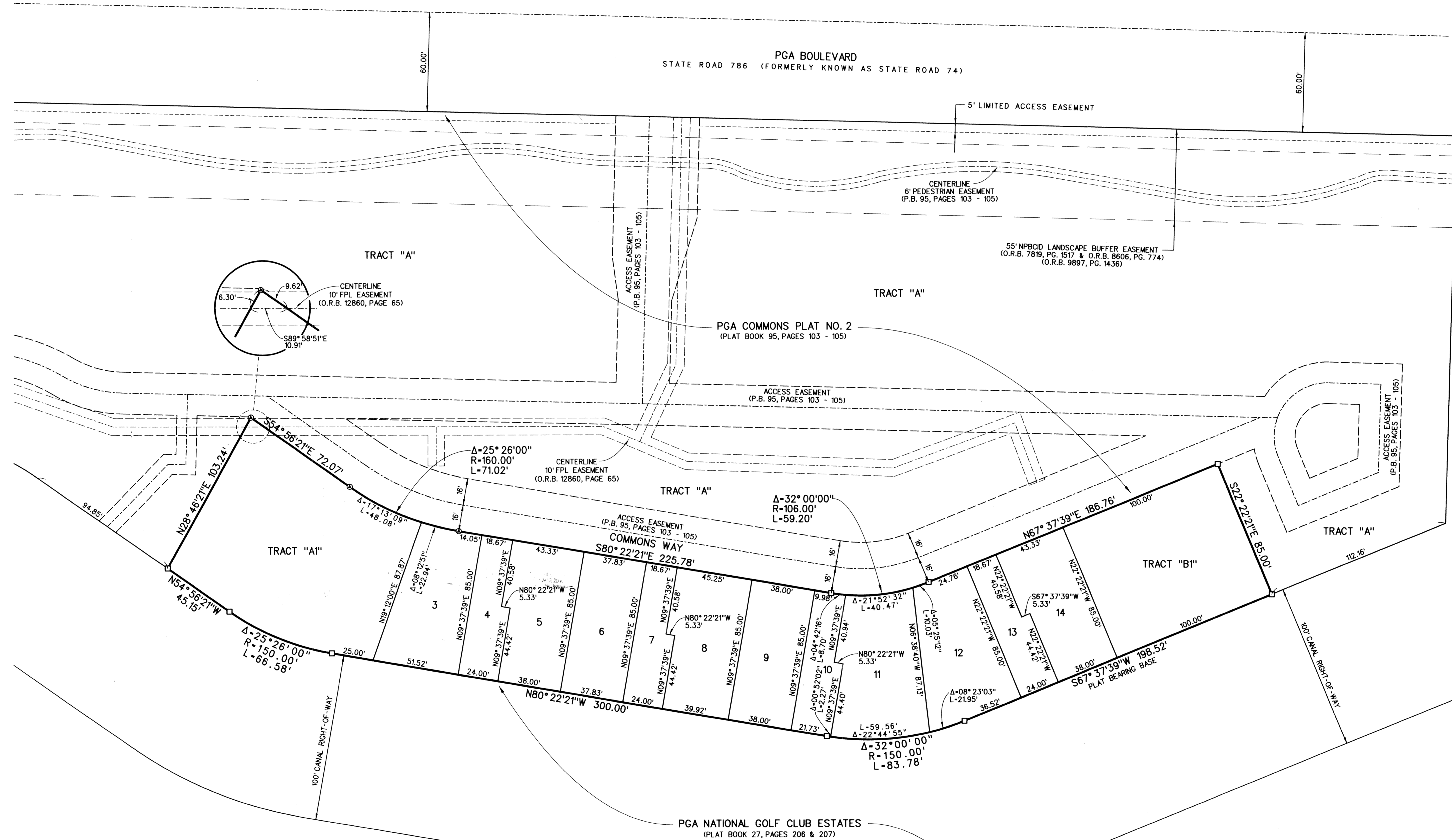


PGA COMMONS PLAT NO. 3

A PARCEL OF LAND BEING A REPLAT OF LOTS 3 THROUGH 21, INCLUSIVE,
 PGA COMMONS PLAT NO. 2, AS RECORDED IN PLAT BOOK 95, PAGES 103 THROUGH 105,
 PUBLIC RECORDS OF PALM BEACH COUNTY, FLORIDA,
 LYING IN SECTION 12, TOWNSHIP 42 SOUTH, RANGE 42 EAST,
 CITY OF OF PALM BEACH GARDENS, PALM BEACH COUNTY, FLORIDA
 JANUARY, 2004
 SHEET 3 OF 3

136



LIDBERG LAND SURVEYING, INC.
 675 West Indiantown Road, Suite 200,
 Jupiter, Florida 33458 TEL. 561-746-8454

CAD. K:\UST \ 124242 \ 03-208 \ 2083306 \ SHEET3.DGN			
REF. K:\UST \ 124242 \ 03-208 \ 2083306 \ 2083306.DGN			
FLD. K.C.	FB. PG.	JOB 03-208-306	
OFF. R.J.W.	426 29	DATE 12/23/03	
CKD. D.C.L.	SHEET 3 OF 3	DWG. D03-208P	