

0786-007

145

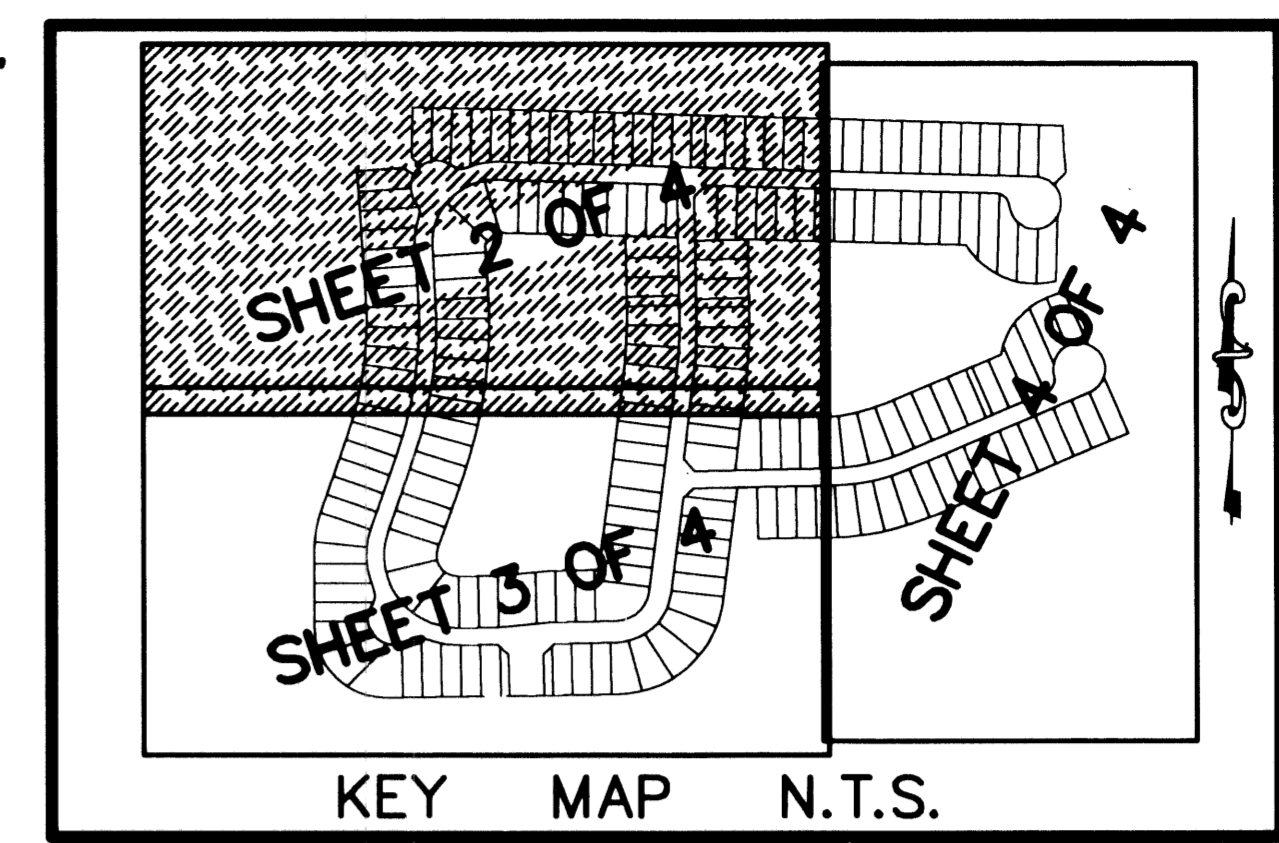
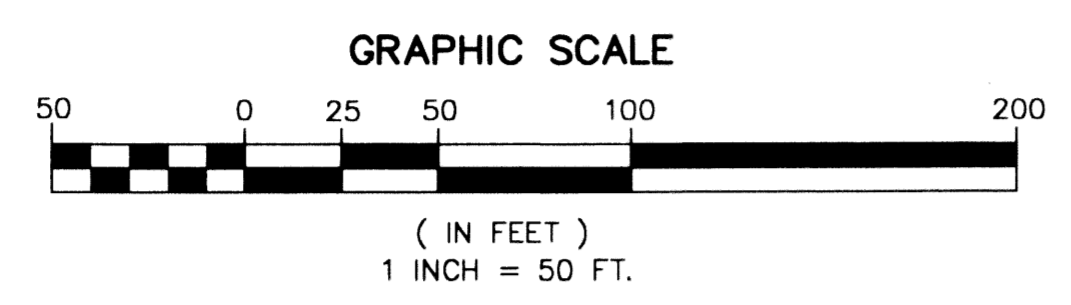
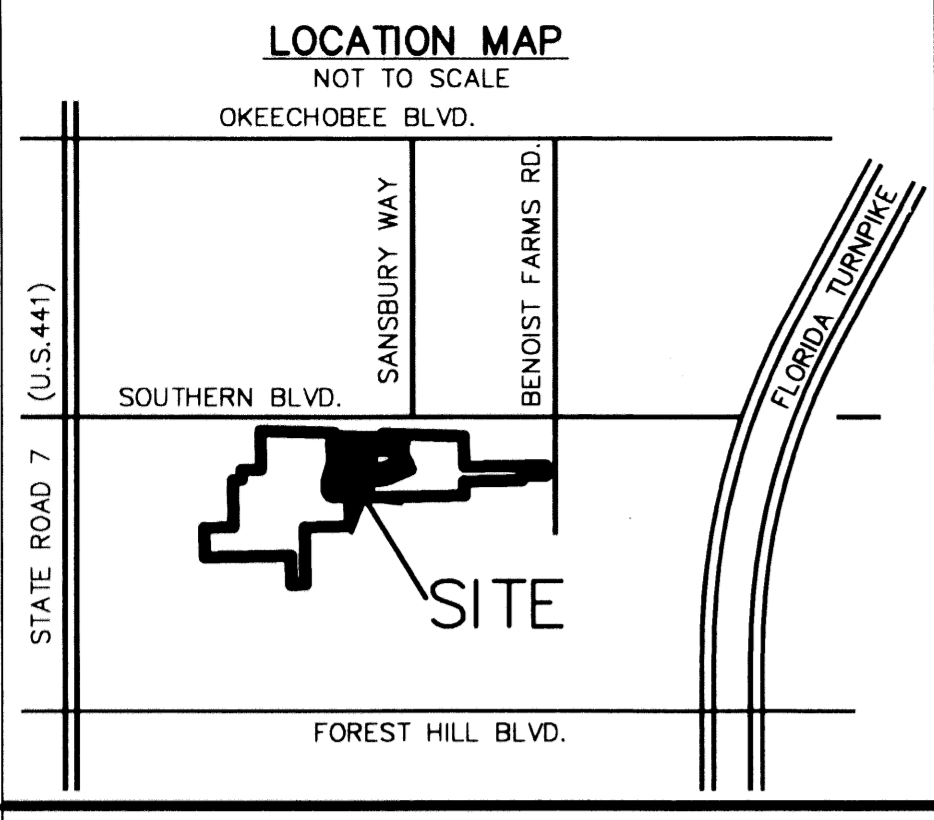
STATE OF FLORIDA
COUNTY OF PALM BEACH
THIS PLAT WAS FILED FOR
RECORD AT _____ M.
THIS _____ DAY OF _____
A.D. 2007 AND DULY RECORDED
IN PLAT BOOK _____ ON
PAGES _____ AND _____
DOROTHY H. WILKEN
CLERK CIRCUIT COURT
BY: _____
DEPUTY CLERK

SHEET 2 OF 4

DIAMOND "C" RANCH POD E/F REPLAT

A PLANNED UNIT DEVELOPMENT BEING A PART OF DIAMOND "C" RANCH PUD, BEING A REPLAT OF POD E/F, DIAMOND "C" RANCH,
AS RECORDED IN PLAT BOOK 99, PAGES 173 THROUGH 179 OF THE PUBLIC RECORDS OF PALM BEACH COUNTY, FLORIDA
LYING IN SECTION 6, TOWNSHIP 44 SOUTH, RANGE 42 EAST, PALM BEACH COUNTY, FLORIDA

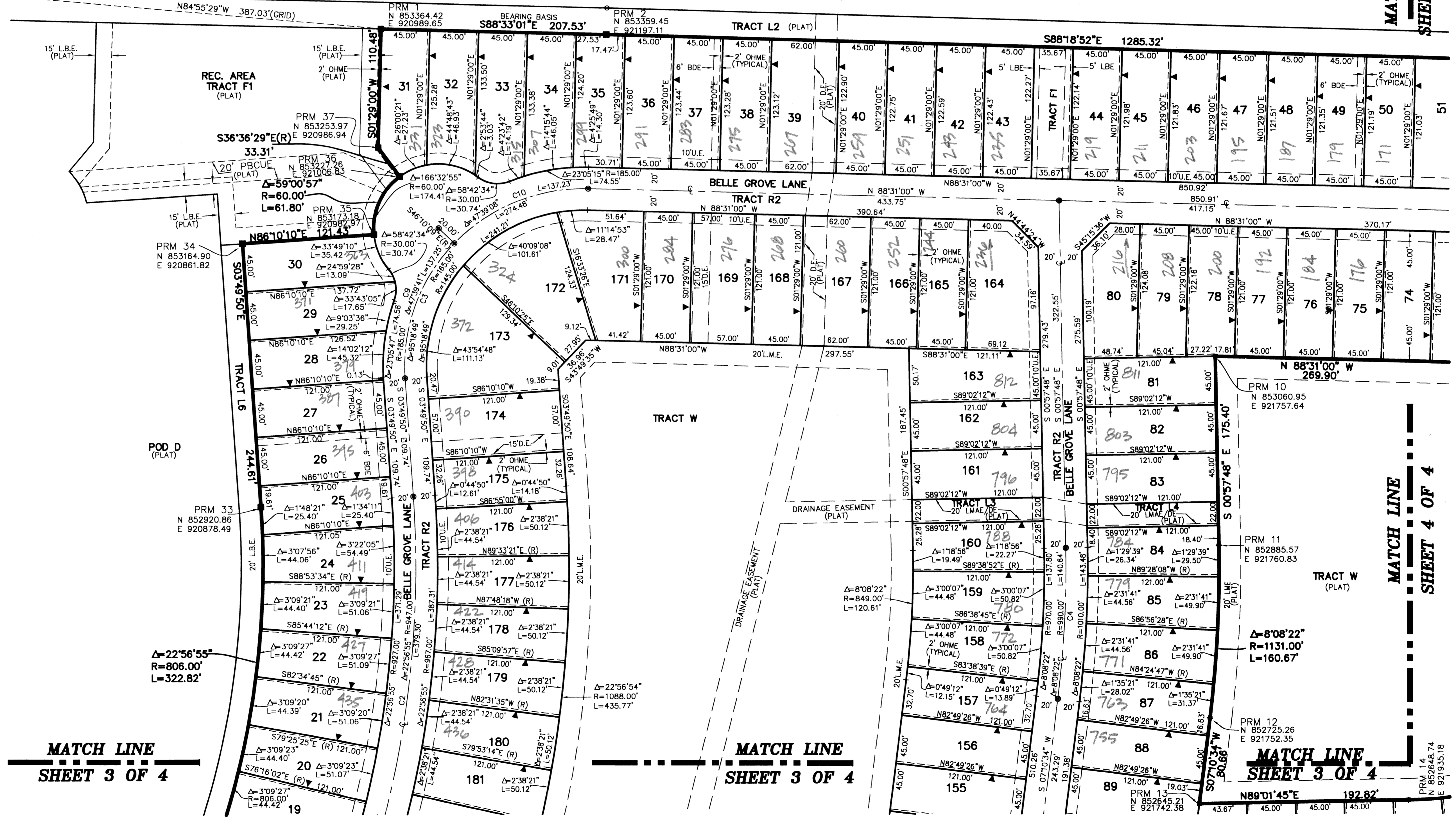
THIS INSTRUMENT PREPARED BY
DAVID P. LINDLEY
OF
CAULFIELD and WHEELER, INC.
SURVEYORS - ENGINEERS - PLANNERS
7301-A WEST PALMETTO PARK ROAD, SUITE 100A
BOCA RATON, FLORIDA 33433 - (561)392-1991
SEPTEMBER - 2002



MATCH LINE
SHEET 4 OF 4

CURVE	CHORD BEARING	CHORD DISTANCE
C1	S35°54'07"E	311.35'
C2	N07°38'38"E	376.77'
C3	S43°49'35"W	243.91'
C4	N03°06'23"E	140.52'
C5	N77°59'20"E	189.59'
C6	N48°07'38"E	137.64'
C7	S13°07'01"E	202.69'
C8	S68°08'13"E	147.16'
C9	S20°00'01"W	133.33'
C10	S67°39'26"W	133.31'

FOUND PRM 14
LG #3591
(PLAT)
N 853398.66
E 920604.13



MATCH LINE
SHEET 3 OF 4

MATCH LINE
SHEET 3 OF 4

MATCH LINE
SHEET 3 OF 4

MATCH LINE
SHEET 4 OF 4

SUBMITTER: DIAMOND "C" RANCH PUD, ET AL.
PAGE: 145
BOOK: 101
ZONE: 44
QUAD: 47
SE
TAZ: 759, 1009
PUD NAME: DIAMOND "C" RANCH

PRM 14
N 852676.74
E 921933.16