

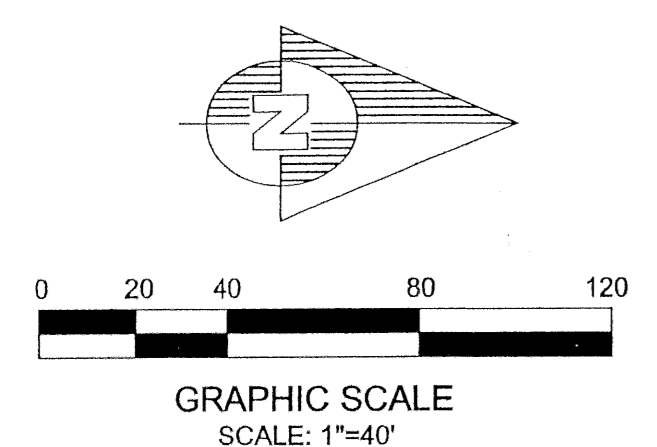
EAGLE TRACE AT RIVER BRIDGE P.U.D.

BEING A REPLAT OF TRACT 14, BLOCK 21, THE PALM BEACH FARMS CO., PLAT NO. 3., ACCORDING TO THE PLAT THEREOF, AS RECORDED IN PLAT BOOK 2, PAGES 45 THROUGH 54, PALM BEACH COUNTY, FLORIDA, PUBLIC RECORDS, AND A PORTION OF RIVER BRIDGE P.U.D. PLAT 3C, ACCORDING TO THE PLAT THEREOF AS RECORDED IN PLAT BOOK 70, PAGES 8 AND 9, PALM BEACH COUNTY, FLORIDA, PUBLIC RECORDS AND IN SECTION 15, TOWNSHIP 44 SOUTH, RANGE 42 EAST, CITY OF GREENACRES, PALM BEACH COUNTY, FLORIDA
 JANUARY 2004 SHEET 2 OF 2 SHEETS

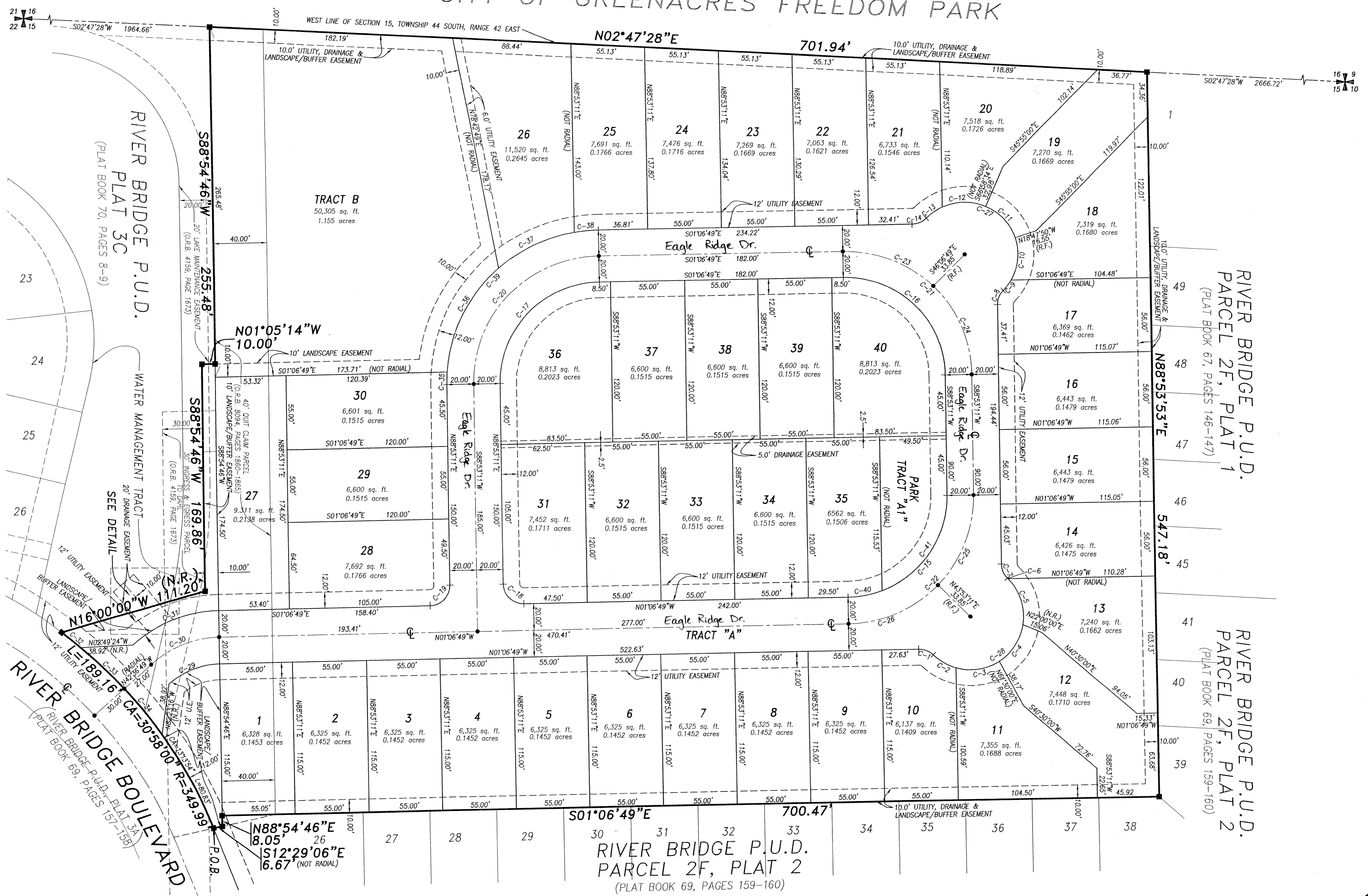
152

STATE OF FLORIDA)
 COUNTY OF PALM BEACH) SS
 THIS PLAT WAS FILED FOR
 RECORD AT _____
 THIS _____ DAY OF _____
 A.D., 2004 AND
 DULY RECORDED IN PLAT BOOK
 _____ ON PAGES _____ AND

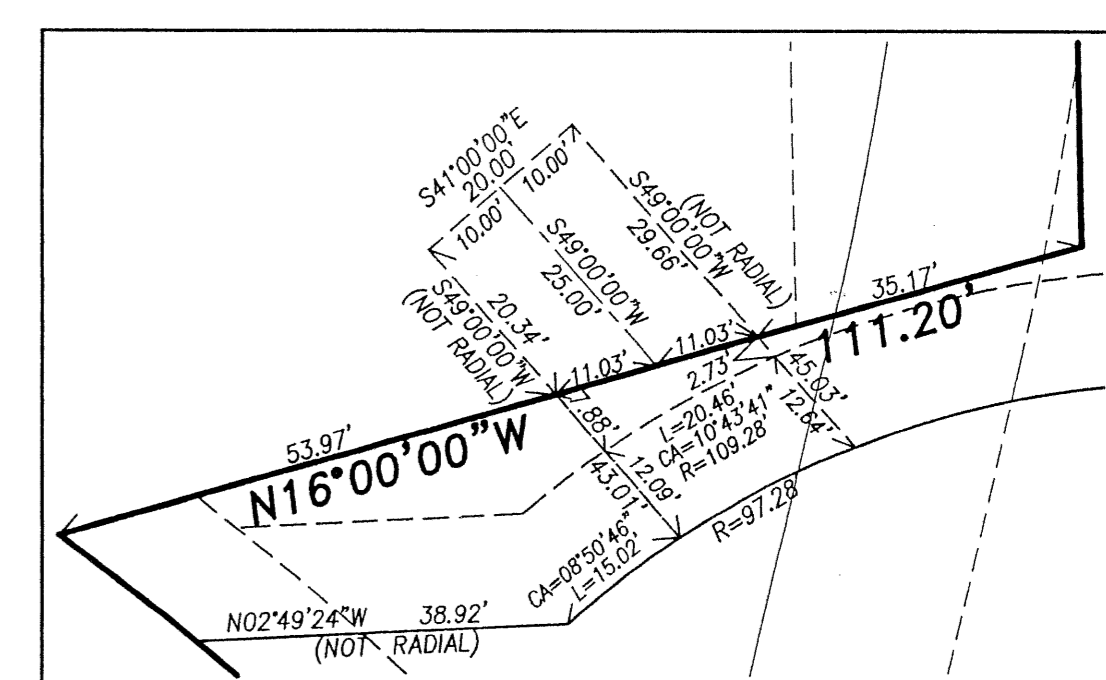
 DOROTHY H. WILKEN, CLERK
 CIRCUIT COURT
 BY: _____ DC



CITY OF GREENACRES FREEDOM PARK



CURVE TABLE					
CURVE	DELTA	RADIUS	LENGTH	CHORD BEARING	CHORD LENGTH
C-1	45°00'00"	15.00'	11.78'	N21°23'11"E	11.48'
C-2	28°14'55"	40.00'	19.72'	N29°45'43"E	19.52'
C-3	48°27'10"	40.00'	33.83'	N08°35'19"W	32.83'
C-4	48°27'03"	40.00'	33.83'	N57°02'26"W	32.83'
C-5	54°06'44"	40.00'	37.78'	S71°40'41"W	36.39'
C-6	00°44'08"	40.00'	0.51'	S44°15'19"W	0.51'
C-7	45°00'00"	15.00'	11.78'	S66°23'12"W	11.48'
C-8	45°00'00"	15.00'	11.78'	N68°36'50"W	11.48'
C-9	14°30'16"	40.00'	10.13'	N53°22'25"W	10.11'
C-10	48°10'45"	40.00'	33.63'	N84°42'54"W	32.65'
C-11	48°10'44"	40.00'	33.63'	S47°06'48"W	32.65'
C-12	48°10'44"	40.00'	33.63'	S01°03'56"E	32.65'
C-13	20°57'30"	40.00'	14.63'	S35°38'03"E	14.54'
C-14	45°00'00"	15.00'	11.78'	S23°36'40"E	11.48'
C-15	90°00'00"	75.00'	117.81'	N46°06'49"W	106.07'
C-16	90°00'00"	75.00'	117.81'	N43°53'11"E	106.07'
C-17	90°00'00"	75.00'	117.81'	N46°06'49"W	106.07'
C-18	90°00'00"	15.00'	23.56'	N43°53'11"E	21.21'
C-19	90°00'00"	15.00'	23.56'	N46°06'49"W	21.21'
C-20	90°00'00"	95.00'	149.22'	N46°06'49"W	134.35'
C-21	90°00'00"	95.00'	149.22'	N43°53'11"E	134.35'
C-22	90°00'00"	95.00'	149.22'	N46°06'49"W	134.35'
C-23	45°00'00"	95.00'	74.61'	N21°23'11"E	72.71'
C-24	45°00'00"	95.00'	74.61'	N66°23'11"E	72.71'
C-25	45°00'00"	95.00'	74.61'	N68°36'49"W	72.71'
C-26	45°00'00"	95.00'	74.61'	N23°36'49"W	72.71'
C-27	180°00'00"	40.00'	125.66'	N43°53'11"E	80.00'
C-28	180°00'00"	40.00'	125.66'	N46°06'49"W	80.00'
C-29	41°30'00"	57.28'	41.49'	N21°51'49"W	40.59'
C-30	41°30'00"	77.28'	55.98'	N21°51'49"W	54.78'
C-31	41°30'00"	97.28'	70.46'	N21°51'49"W	69.94'
C-32	02°59'39"	349.99'	18.29'	N38°31'02"E	18.28'
C-33	07°22'20"	349.99'	45.03'	N43°42'01"E	45.00'
C-34	07°22'11"	349.99'	45.02'	N51°04'33"E	44.99'
C-35	04°44'19"	115.00'	9.51'	N88°44'40"W	9.51'
C-36	44°34'47"	115.00'	89.48'	N64°05'02"W	87.24'
C-37	31°34'37"	115.00'	63.38'	N26°00'16"W	62.58'
C-38	09°06'17"	115.00'	18.27'	N05°39'53"W	18.25'
C-39	90°00'00"	115.00'	180.64'	S46°06'49"E	162.63'
C-40	19°52'37"	75.00'	26.02'	N11°03'01"W	25.88'
C-41	70°07'23"	75.00'	91.79'	N56°03'01"W	86.17'



Dailey-Fotony, inc.
 land surveyors - planners
 5050 10th Avenue North Suite B - Lake Worth FL 33463-2062
 Phone: 561-965-8787 Fax: 561-965-8963