

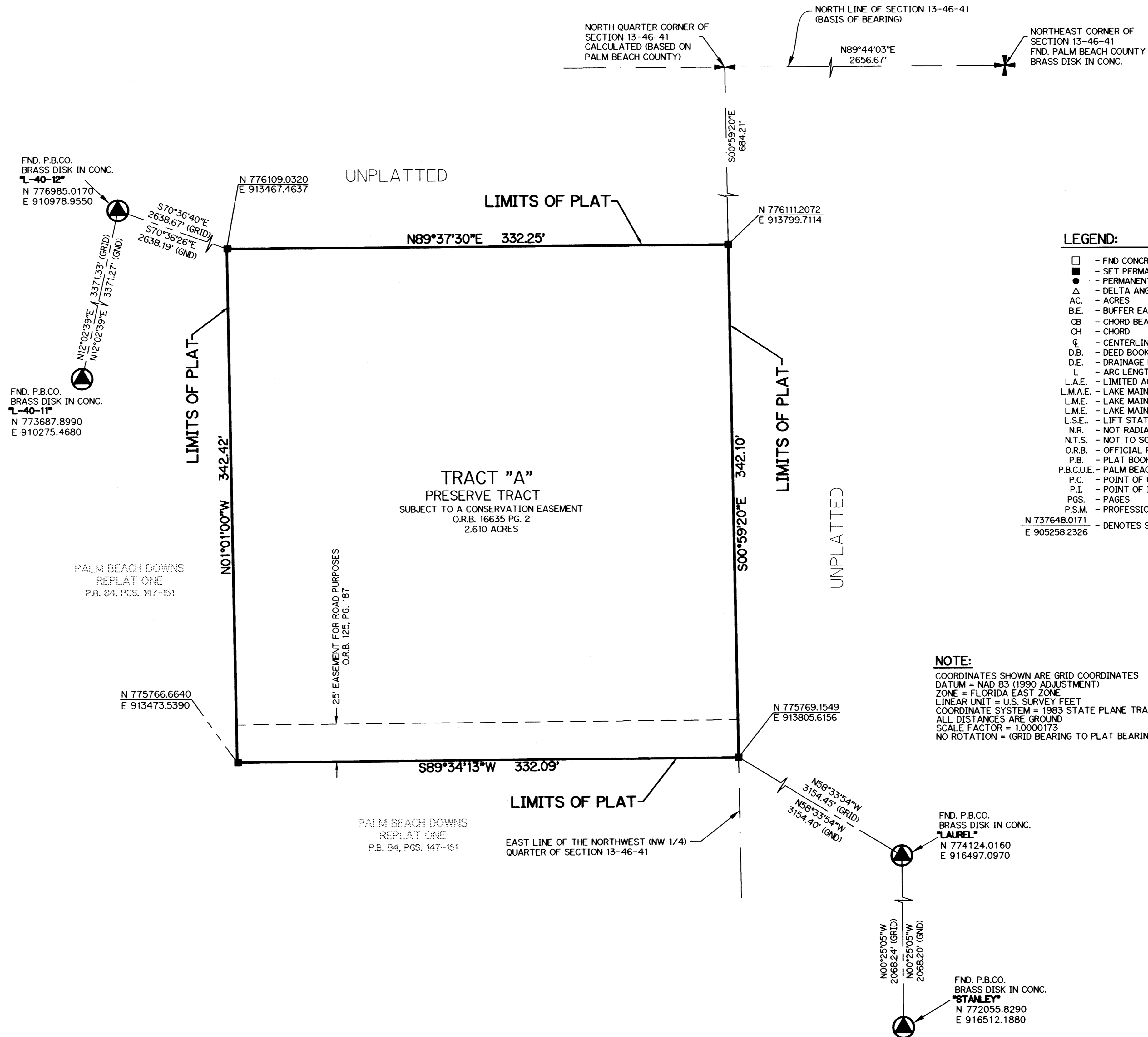
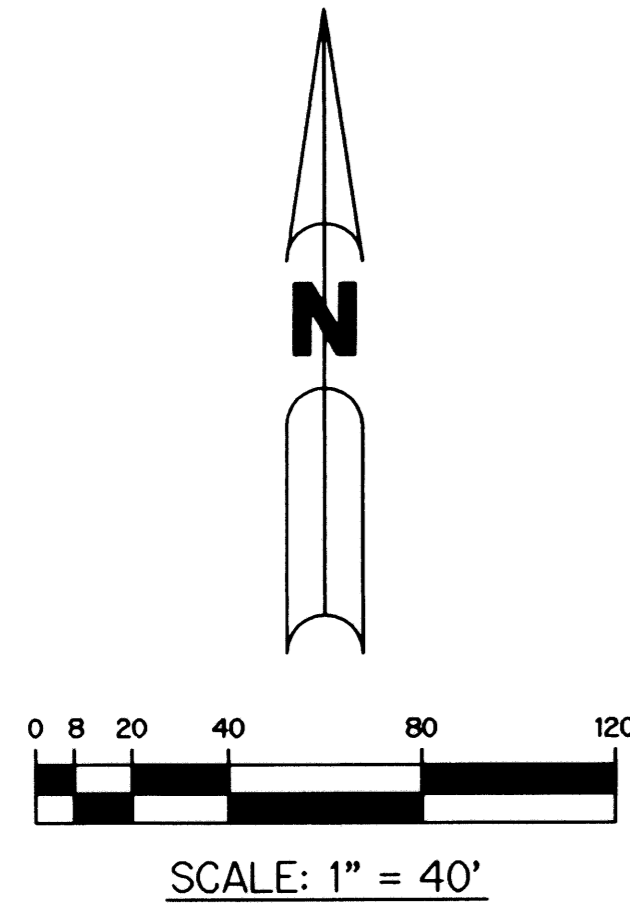
CANYON LAKES PRESERVE AREA NO. 3

THE NORTH HALF (N 1/2) OF THE EAST HALF (E 1/2) OF THE SOUTHEAST QUARTER (SE 1/4) OF THE NORTHWEST QUARTER (NW 1/4) OF SECTION 13, TOWNSHIP 46 SOUTH, RANGE 41 EAST, PALM BEACH COUNTY, FLORIDA.

167

SHEET 2 OF 2

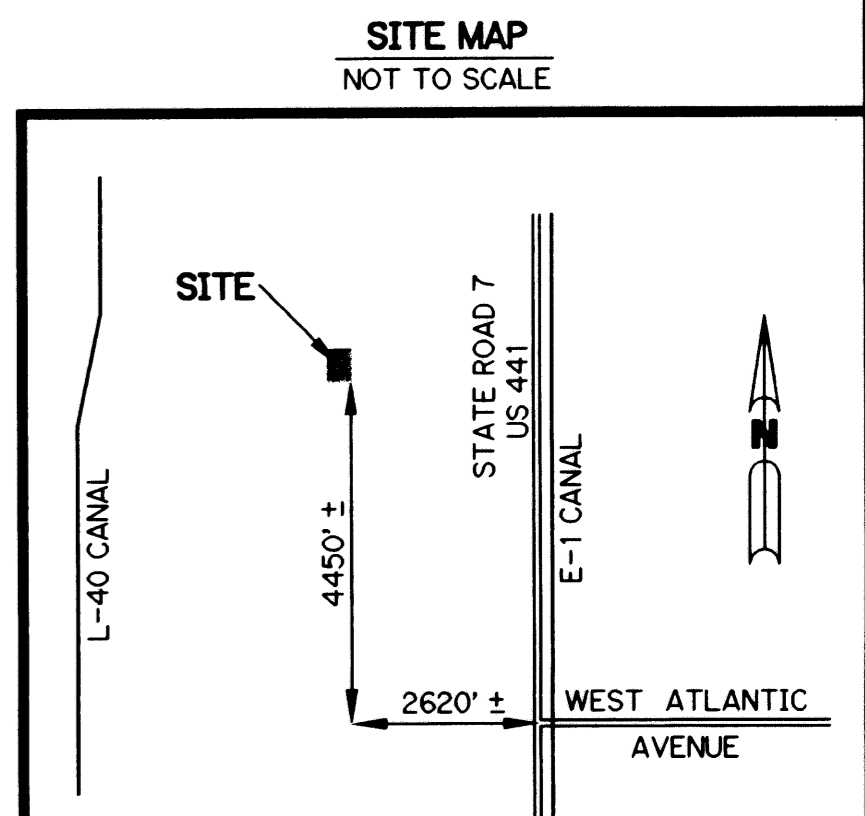
MARCH, 2004



LEGEND:

□	- FND CONCRETE MONUMENT	R	- RADIUS
●	- SET PERMANENT REFERENCE MONUMENT, L.B. #6674	RAD.	- RADIAL
○	- PERMANENT CONTROL POINT, L.B. #6674	R/W	- RIGHT-OF-WAY
Δ	- DELTA ANGLE	S.F.	- SQUARE FEET
AC	- ACRES	S.T.	- SURVEY TIE
B.E.	- BUFFER EASEMENT	U.E.	- UTILITY EASEMENT
CB	- CHORD BEARING	P.O.B.	- POINT OF BEGINNING
CH	- CHORD	P.O.C.	- POINT OF COMMENCEMENT
CL	- CENTERLINE		
D.B.	- DEED BOOK		
D.E.	- DRAINAGE EASEMENT		
L	- ARC LENGTH		
L.A.E.	- LIMITED ACCESS EASEMENT		
L.M.A.E.	- LAKE MAINTENANCE ACCESS EASEMENT		
L.M.E.	- LAKE MAINTENANCE EASEMENT		
L.M.E.	- LAKE MAINTENANCE EASEMENT		
L.S.E.	- LIFT STATION EASEMENT		
N.R.	- NOT RADIAL		
N.T.S.	- NOT TO SCALE		
O.R.B.	- OFFICIAL RECORD BOOK		
P.B.	- PLAT BOOK		
P.B.C.U.E.	- PALM BEACH COUNTY UTILITY EASEMENT		
P.C.	- POINT OF CURVATURE		
P.I.	- POINT OF INTERSECTION		
PGS.	- PAGES		
P.S.M.	- PROFESSIONAL SURVEYOR AND MAPPER		
N 737648.0171 E 905258.2326	- DENOTES STATE PLANE COORDINATES		

NOTE:
 COORDINATES SHOWN ARE GRID COORDINATES
 DATUM = NAD 83 (1990 ADJUSTMENT)
 ZONE = FLORIDA EAST ZONE
 LINEAR UNIT = U.S. SURVEY FEET
 COORDINATE SYSTEM = 1983 STATE PLANE TRANSVERSE MERCATOR PROJECTION
 ALL DISTANCES ARE GROUND
 SCALE FACTOR = 1.0000173
 NO ROTATION = (GRID BEARING TO PLAT BEARING)



SUBDIVISION CANYON LAKES PRESERVE AREA No. 3
 BOOK 101
 FLOOD MAP # 050 B
 QUAD # 0106
 SE 03, 504
 TAZ 1051
 FUD NAME FOGG NORTH

THIS INSTRUMENT PREPARED BY
 PERRY C. WHITE, P.S.M. 4213, STATE OF FLORIDA
 LAWSON, NOBLE AND WEBB, INC.
 ENGINEERS PLANNERS SURVEYORS
 420 COLUMBIA DRIVE
 WEST PALM BEACH, FLORIDA 33409
 LB-6674