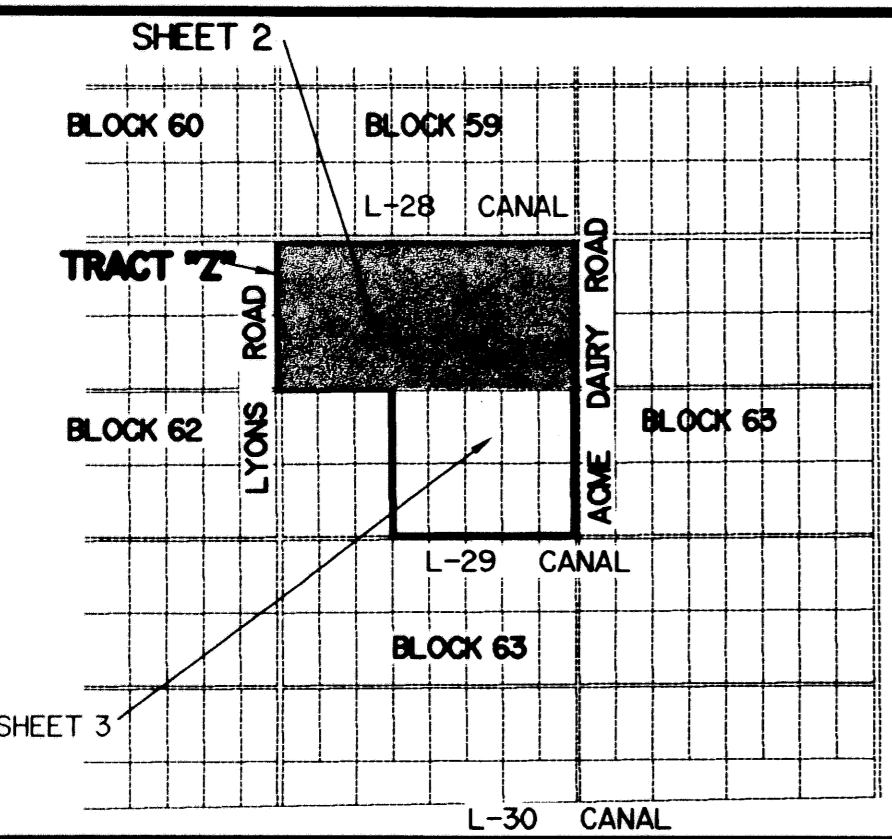


174



0863-009

CANYON LAKES (A.K.A. FOGG NORTH) PLANNED UNIT DEVELOPMENT

CANYON LAKES PRESERVE AREA NO. 5

BEING A REPLAT OF ALL OF TRACTS 17 THROUGH 23, 42 THROUGH 45, 52 THROUGH 55, AND A PORTION OF TRACTS 9 THROUGH 16, 24, 41, 56 AND A PORTION OF ROAD, DYKE AND DITCH RESERVATION, 30 AND 50 FEET IN WIDTH, ALL LYING WITHIN BLOCK 63, PALM BEACH FARMS COMPANY PLAT NO. 3, ACCORDING TO THE PLAT THEREOF, AS RECORDED IN PLAT BOOK 2, PAGES 45 THROUGH 54, OF THE PUBLIC RECORDS, LYING, BEING AND SITUATE IN SECTIONS 5 AND 6, TOWNSHIP 46 SOUTH, RANGE 42 EAST PALM BEACH COUNTY, FLORIDA

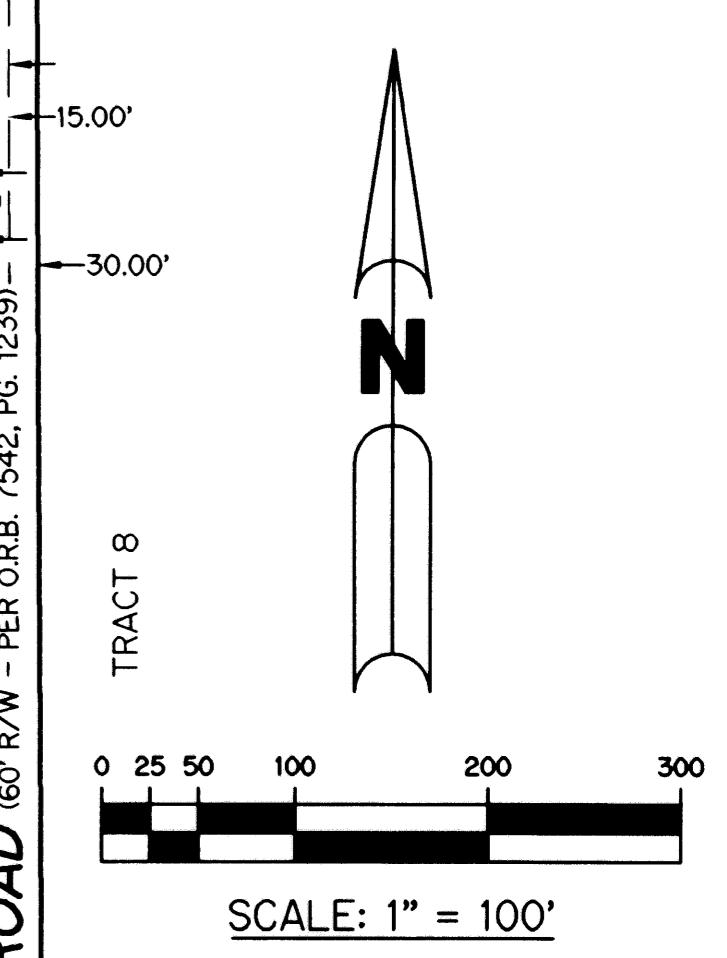
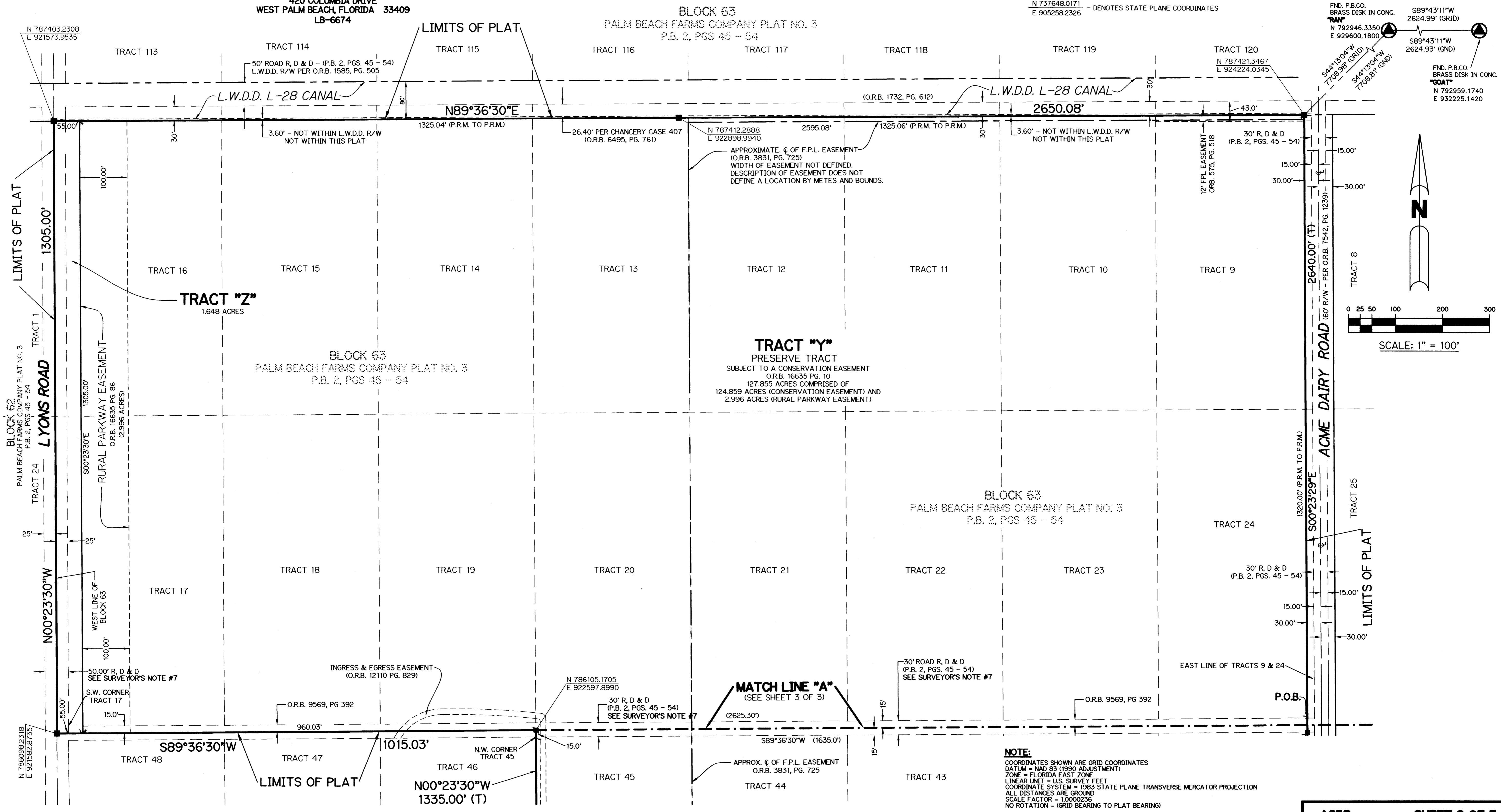
SHEET 2 OF 3

FEBRUARY, 2004

LEGEND:

- - FND CONCRETE MONUMENT
- - SET PERMANENT REFERENCE MONUMENT, L.B. #6674
- ▲ - PERMANENT CONTROL POINT, L.B. #6674
- Δ - DELTA ANGLE
- AC. - ACRES
- B.E. - BUFFER EASEMENT
- CB - CHORD BEARING
- CH - CHORD
- CL - CENTERLINE
- D.B. - DEED BOOK
- D.E. - DRAINAGE EASEMENT
- L. - ARC LENGTH
- L.A.E. - LIMITED ACCESS EASEMENT
- L.M.A.E. - LAKE MAINTENANCE ACCESS EASEMENT
- L.M.E. - LAKE MAINTENANCE EASEMENT
- L.M.E. - LAKE MAINTENANCE EASEMENT
- L.S.E. - LIFT STATION EASEMENT
- L.W.D.D. - LAKE WORTH DRAINAGE DISTRICT
- N.R. - NOT RADIAL
- N.T.S. - NOT TO SCALE
- O.R.B. - OFFICIAL RECORD BOOK
- P.B. - PLAT BOOK
- P.B.C.U.E. - PALM BEACH COUNTY UTILITY EASEMENT
- P.C. - POINT OF CURVATURE
- P.I. - POINT OF INTERSECTION
- PGS. - PAGES
- P.S.M. - PROFESSIONAL SURVEYOR AND MAPPER
- R - RADIUS
- N 737648.0171
E 905258.2326 - DENOTES STATE PLANE COORDINATES
- R, D & D - ROAD, DYKE AND DITCH RESERVATION
- RAD. - RADIAL
- R/W - RIGHT-OF-WAY
- S.F. - SQUARE FEET
- S.T. - SURVEY TIE
- U.E. - UTILITY EASEMENT
- P.O.B. - POINT OF BEGINNING
- P.O.C. - POINT OF COMMENCEMENT
- T - TOTAL
- () - DIMENSION PER DESCRIPTION

THIS INSTRUMENT PREPARED BY
PERRY C. WHITE, P.S.M. 4213, STATE OF FLORIDA
LAWSON, NOBLE AND WEBB, INC.
ENGINEERS PLANNERS SURVEYORS
420 COLUMBIA DRIVE
WEST PALM BEACH, FLORIDA 33409
LB-6674



NOTE:
COORDINATES SHOWN ARE GRID COORDINATES
DATUM = NAD 83 (1990 ADJUSTMENT)
ZONE = FLORIDA EAST ZONE
LINEAR UNIT = U.S. SURVEY FEET
COORDINATE SYSTEM = 1983 STATE PLANE TRANSVERSE MERCATOR PROJECTION
ALL DISTANCES ARE GROUND
SCALE FACTOR = 1.0000236
NO ROTATION = (GRID BEARING TO PLAT BEARING)

SUBDIVISION CANYON LAKES PRESERVE AREA No. 5
BOOK 101 PAGE 174
FLOOD ZONE B FLOOD MAP # 200 A
QUAD # 051 ZONING PD/D
SE ZIP CODE 33437
TAZ 759
PUB NAME FOGG NORTH