

# CANYON LAKES (A.K.A. FOGG NORTH) PLANNED UNIT DEVELOPMENT

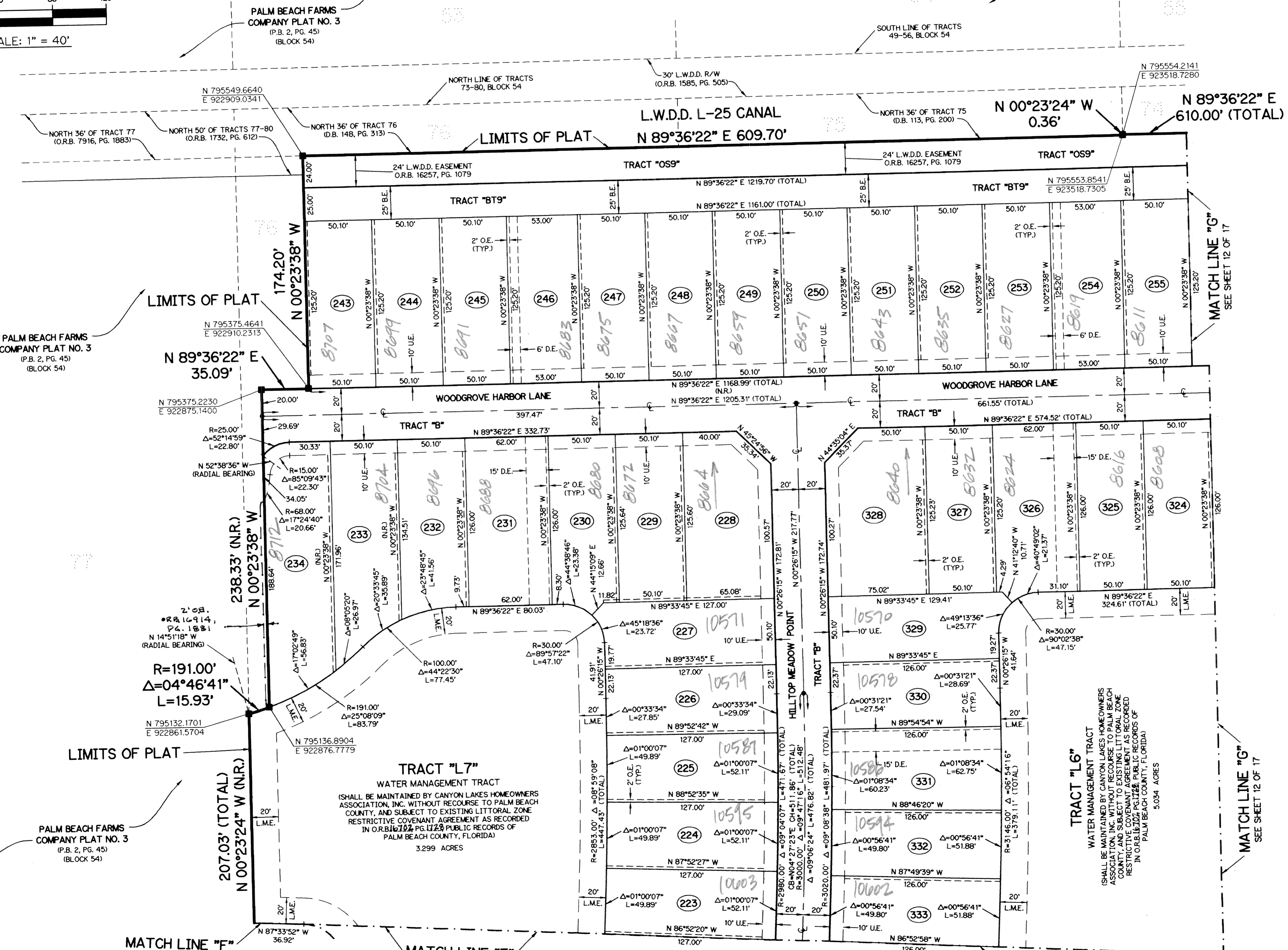
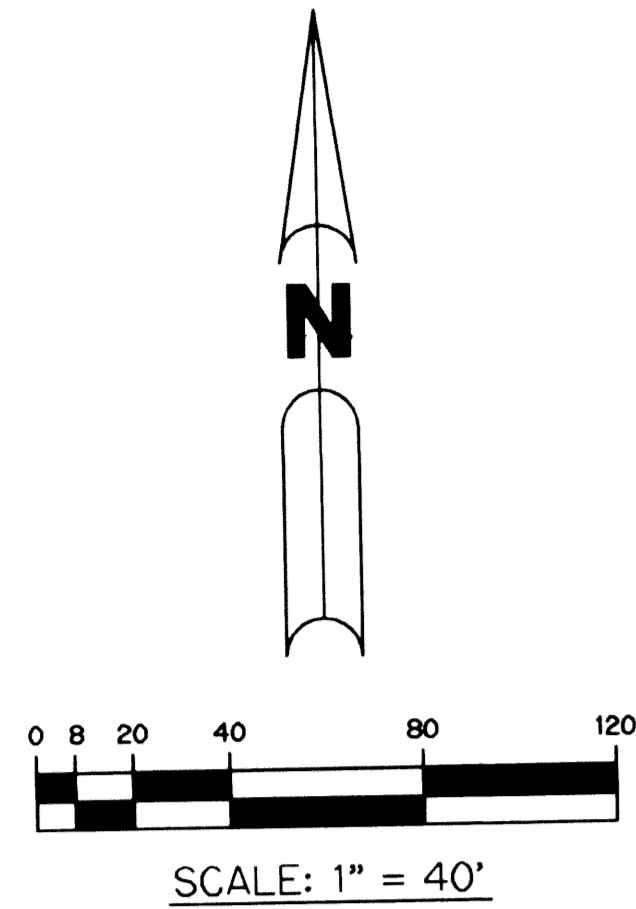
## CANYON LAKES - PLAT ONE

BEING A REPLAT OF A PORTION OF TRACTS 17, 48, 49, 73 THROUGH 76, 80 THROUGH 86, 88, 105 THROUGH 113, 115 THROUGH 120, AND ALL OF TRACTS 87 & 114, AND A PORTION OF A ROAD, DYKE AND DITCH RESERVATION, 30.00 FEET IN WIDTH, ALL LYING IN BLOCK 54, PALM BEACH FARMS COMPANY PLAT NO. 3, ACCORDING TO THE PLAT THEREOF, RECORDED IN PLAT BOOK 2, PAGES 45 THROUGH 54 OF THE PUBLIC RECORDS OF PALM BEACH COUNTY, FLORIDA, ALL LYING IN SECTIONS 29 AND 32, TOWNSHIP 45 SOUTH, RANGE 42 EAST,  
PALM BEACH COUNTY, FLORIDA

SHEET 11 OF 17 NOVEMBER, 2003

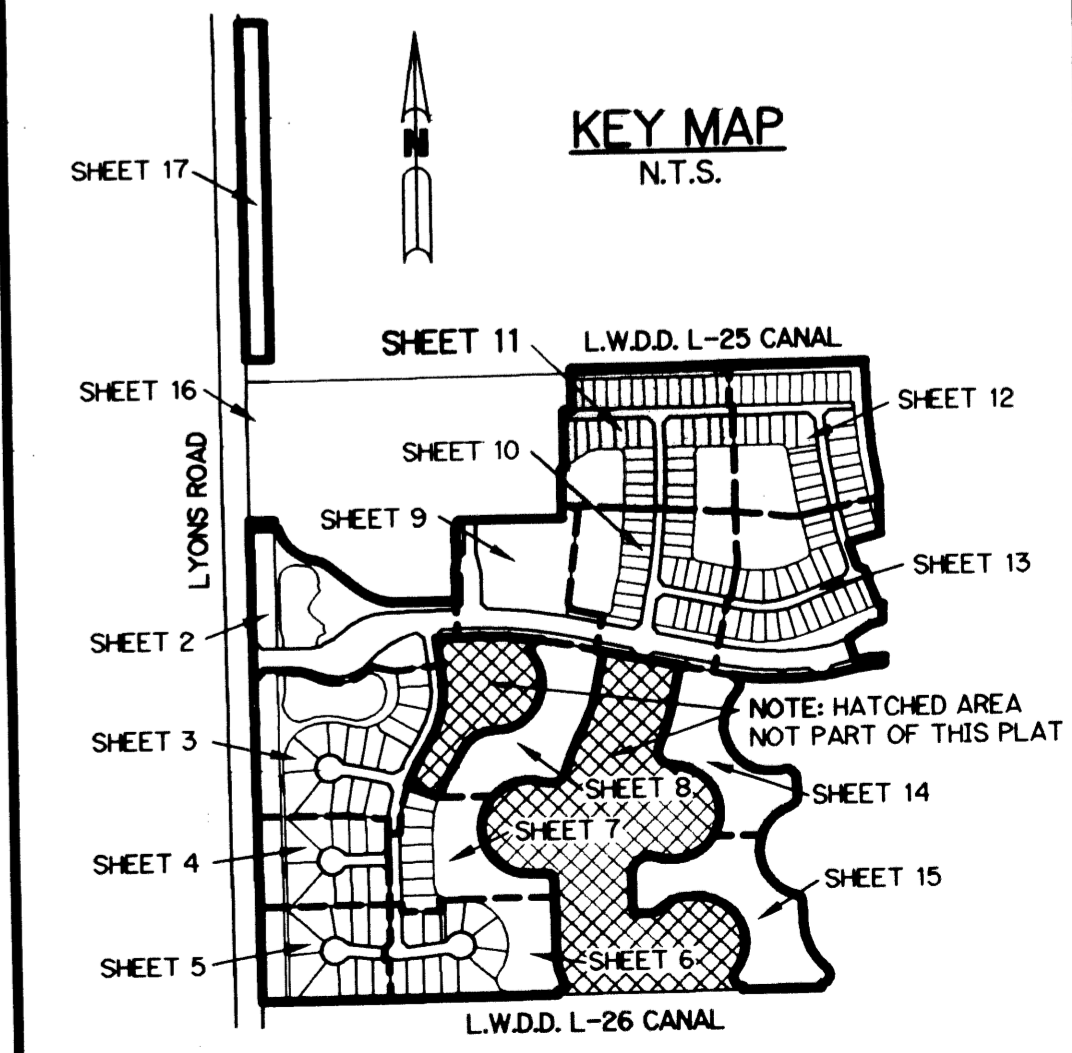
THIS INSTRUMENT PREPARED BY  
PERRY C. WHITE, P.S.M. 4213, STATE OF FLORIDA  
LAWSON, NOBLE AND WEBB, INC.  
ENGINEERS PLANNERS SURVEYORS  
420 COLUMBIA DRIVE  
WEST PALM BEACH, FLORIDA 33409  
LB-6674

201



- LEGEND:**
- - SET PERMANENT REFERENCE MONUMENT, L.B. #6674
  - - FOUND PERMANENT REFERENCE MONUMENT, L.B. #6674
  - - SET PERMANENT CONTROL POINT, L.B. #6674
  - - FOUND PERMANENT CONTROL POINT, L.B. #6674
  - Δ - DELTA ANGLE
  - B.E. - BUFFER EASEMENT
  - CB - CHORD BEARING
  - CH - CHORD DISTANCE
  - CL - CENTERLINE
  - D.B. - DEED BOOK
  - DE - DRAINAGE EASEMENT
  - GND. - GROUND
  - L - ARC LENGTH
  - L.A.E. - LIMITED ACCESS EASEMENT
  - L.M.A.E. - LAKE MAINTENANCE ACCESS EASEMENT
  - L.M.E. - LAKE MAINTENANCE EASEMENT
  - L.W.D.D. - LAKE WORTH DRAINAGE DISTRICT
  - N.R. - NOT RADIAL
  - N.T.S. - NOT TO SCALE
  - O.R.B. - OFFICIAL RECORD BOOK
  - P.B. - PLAT BOOK
  - P.C. - POINT OF CURVATURE
  - P.C.P. - PERMANENT CONTROL POINT
  - P.S. - PAGES
  - P.O.B. - POINT OF BEGINNING
  - P.O.C. - POINT OF COMMENCEMENT
  - P.S.M. - PROFESSIONAL SURVEYOR AND MAPPER
  - P.T. - POINT OF TANGENCY
  - R - RADIUS
  - RAD. - RADIAL
  - R/W - RIGHT-OF-WAY
  - TYP. - TYPICAL
  - U.E. - UTILITY EASEMENT
  - N 100000.0000  
E 100000.0000
  - DENOTES STATE PLANE COORDINATES

**NOTE:**  
COORDINATES SHOWN ARE GRID COORDINATES DATUM = NAD 83, 1990 ADJUSTMENT AS READJUSTED BY PALM BEACH COUNTY IN 1998  
ZONE = FLORIDA EAST ZONE  
LINEAR UNIT = U.S. SURVEY FEET  
COORDINATE SYSTEM = 1983 STATE PLANE TRANSVERSE MERCATOR PROJECTION  
ALL DISTANCES ARE GROUND  
SCALE FACTOR = 1.0000227  
PLAT BEARING = GRID BEARING  
NO ROTATION



SUBDIVISION CANYON LAKES-PLAT ONE  
BOOK 101 PAGE 201  
FLOOD ZONE B FLOOD MAP # 165A  
QUAD # 50 ZONING FDD  
TAG 744750 ZIP CODE 33437  
PUD NAME FOGG NORTH

PALM BEACH FARMS COMPANY PLAT NO. 3 (P.B. 2, PG. 45) (BLOCK 54)

MATCH LINE "F" SEE SHEET 9 OF 17

MATCH LINE "F" SEE SHEET 10 OF 17

MATCH LINE "F" SEE SHEET 10 OF 17

MATCH LINE "G" SEE SHEET 12 OF 17