

CANYON LAKES (A.K.A. FOGG NORTH) PLANNED UNIT DEVELOPMENT

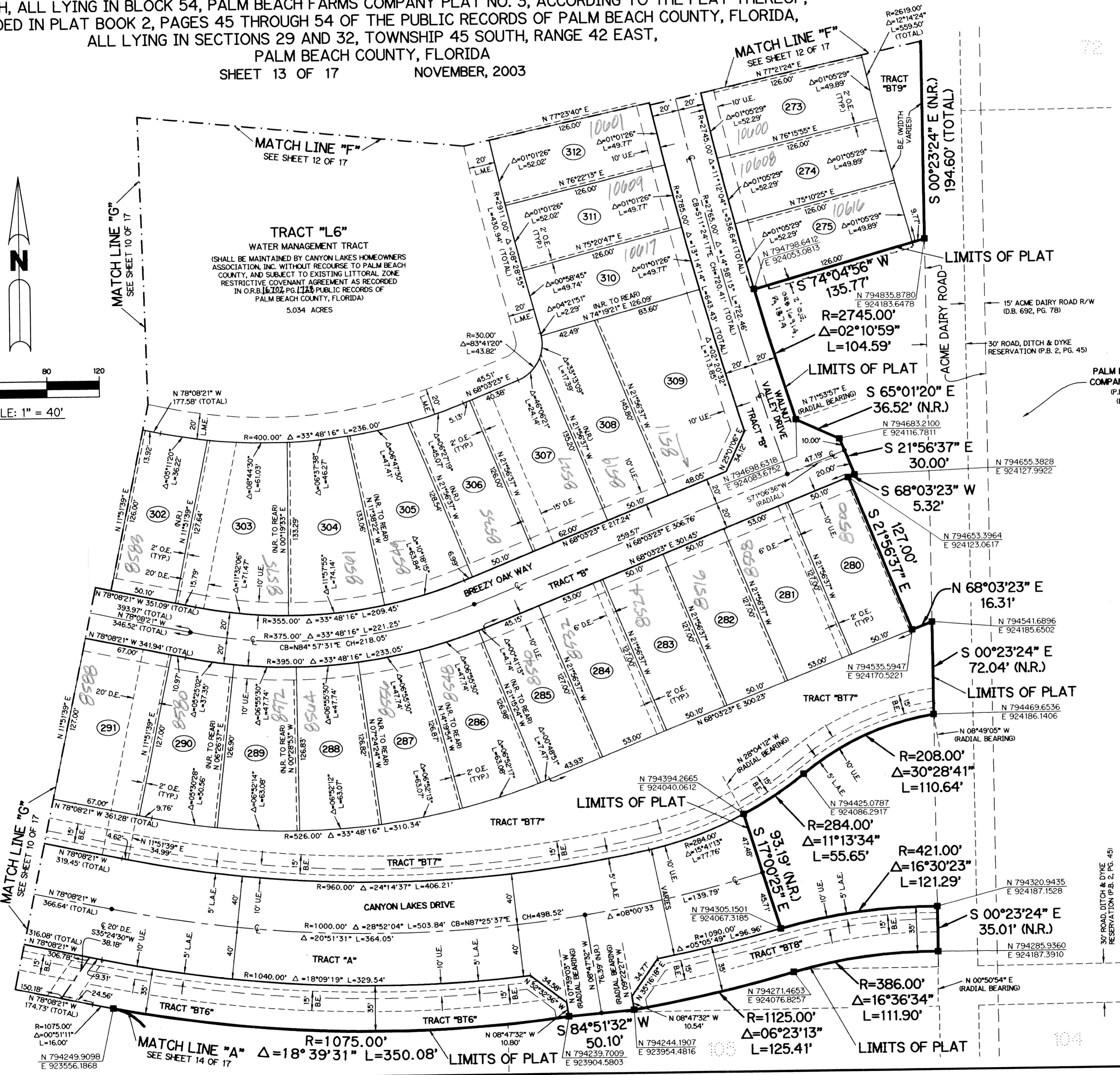
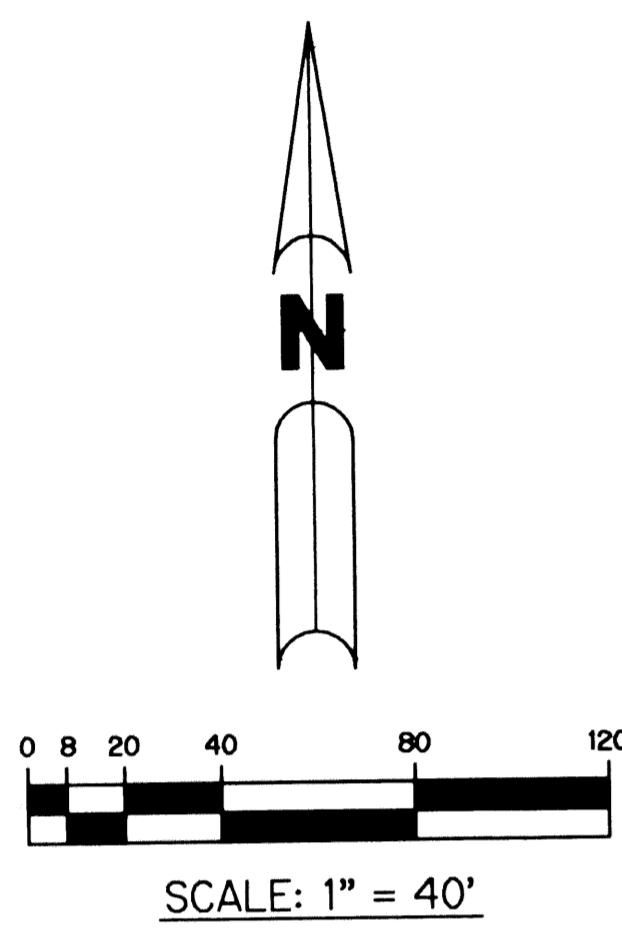
CANYON LAKES - PLAT ONE

BEING A REPLAT OF A PORTION OF TRACTS 17, 48, 49, 73 THROUGH 76, 80 THROUGH 86, 88, 105 THROUGH 113, 115 THROUGH 120, AND ALL OF TRACTS 87 & 114, AND A PORTION OF A ROAD, DYKE AND DITCH RESERVATION, 30.00 FEET IN WIDTH, ALL LYING IN BLOCK 54, PALM BEACH FARMS COMPANY PLAT NO. 3, ACCORDING TO THE PLAT THEREOF, RECORDED IN PLAT BOOK 2, PAGES 45 THROUGH 54 OF THE PUBLIC RECORDS OF PALM BEACH COUNTY, FLORIDA, ALL LYING IN SECTIONS 29 AND 32, TOWNSHIP 45 SOUTH, RANGE 42 EAST, PALM BEACH COUNTY, FLORIDA

SHEET 13 OF 17 NOVEMBER, 2003

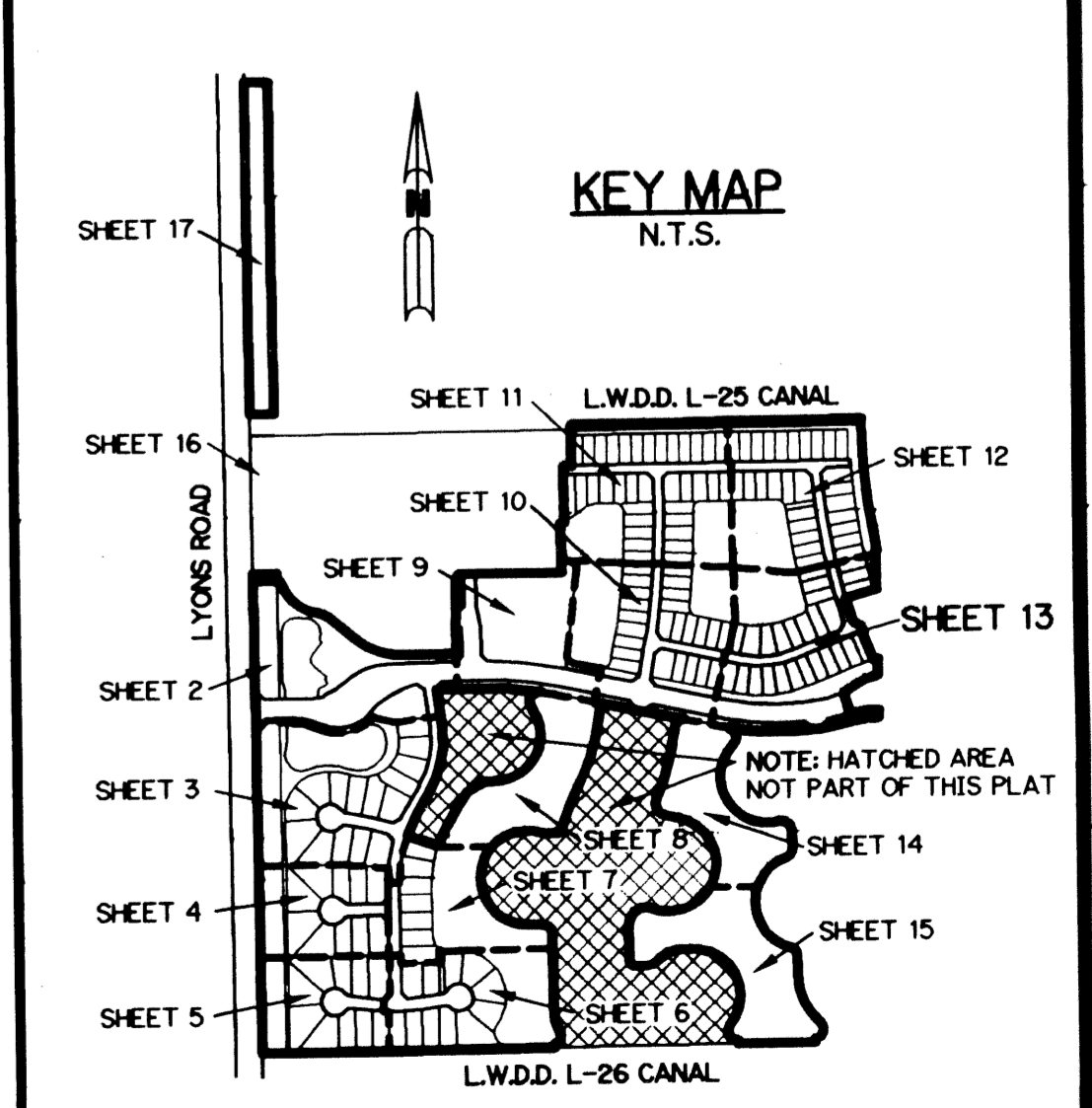
THIS INSTRUMENT PREPARED BY
 PERRY C. WHITE, P.S.M. 4213, STATE OF FLORIDA
 LAWSON, NOBLE AND WEBB, INC.
 ENGINEERS PLANNERS SURVEYORS
 420 COLUMBIA DRIVE
 WEST PALM BEACH, FLORIDA 33409
 LB-6674

203



- LEGEND:**
- - SET PERMANENT REFERENCE MONUMENT, L.B. #6674
 - - FOUND PERMANENT REFERENCE MONUMENT, L.B. #6674
 - - SET PERMANENT CONTROL POINT, L.B. #6674
 - - FOUND PERMANENT CONTROL POINT, L.B. #6674
 - Δ - DELTA ANGLE
 - BE - BUFFER EASEMENT
 - CB - CHORD BEARING
 - CH - CHORD DISTANCE
 - C - CENTERLINE
 - DB - DEED BOOK
 - DE - DRAINAGE EASEMENT
 - GRD - GROUND
 - L - ARC LENGTH
 - L.A.E. - LIMITED ACCESS EASEMENT
 - L.M.A.E. - LAKE MAINTENANCE ACCESS EASEMENT
 - L.M.E. - LAKE MAINTENANCE EASEMENT
 - L.W.D.D. - LAKE WORTH DRAINAGE DISTRICT
 - N.R. - NOT RADIAL
 - N.T.S. - NOT TO SCALE
 - O.R.B. - OFFICIAL RECORD BOOK
 - P.B. - PLAT BOOK
 - P.C. - POINT OF CURVATURE
 - P.C.P. - PERMANENT CONTROL POINT
 - PGS. - PAGES
 - P.O.B. - POINT OF BEGINNING
 - P.O.C. - POINT OF COMMENCEMENT
 - P.S.M. - PROFESSIONAL SURVEYOR AND MAPPER
 - P.T. - POINT OF TANGENCY
 - R - RADIUS
 - RAD. - RADIAL
 - R/W - RIGHT-OF-WAY
 - TYP. - TYPICAL
 - U.E. - UTILITY EASEMENT
 - N 100000.0000
E 100000.0000
 - DENOTES STATE PLANE COORDINATES

NOTE:
 COORDINATES SHOWN ARE GRID COORDINATES DATUM = NAD 83, 1980 ADJUSTMENT AS READJUSTED BY PALM BEACH COUNTY IN 1998
 ZONE = FLORIDA EAST ZONE
 LINEAR UNIT = U.S. SURVEY FEET
 COORDINATE SYSTEM = 1983 STATE PLANE TRANSVERSE MERCATOR PROJECTION
 ALL DISTANCES ARE GROUND
 SCALE FACTOR = 1.0000227
 PLAT BEARING = GRID BEARING
 NO ROTATION



CONVEYOR: CANYON LAKES - PLAT ONE
 DATE: 10/10/03
 RECORDED: 10/15/03
 COUNTY: PALM BEACH
 BOOK: 2
 PAGE: 45
 PREPARED BY: PERRY C. WHITE
 FIRM: LAWSON, NOBLE AND WEBB, INC.
 ADDRESS: 420 COLUMBIA DRIVE
 CITY: WEST PALM BEACH, FLORIDA 33409
 PHONE: 561-833-4471
 FAX: 561-833-4471
 PROJECT: FOGG NORTH