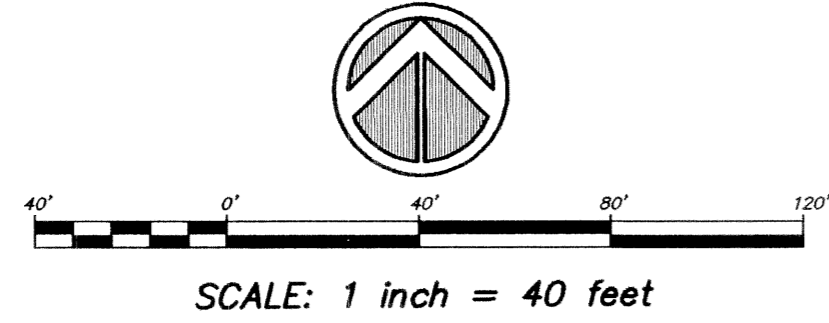


**PLAT NOTES:**

1. THIS PLAT, AS RECORDED IN ITS GRAPHIC FORM IS THE OFFICIAL DEPICTION OF THE SUBDIVIDED LANDS DESCRIBED HEREIN AND WILL IN NO CIRCUMSTANCES BE SUPPLANTED IN AUTHORITY BY ANY OTHER GRAPHIC OR DIGITAL FORM OF THE PLAT. THERE MAY BE ADDITIONAL RESTRICTIONS THAT ARE NOT RECORDED ON THIS PLAT THAT MAY BE FOUND IN THE PUBLIC RECORDS OF THIS COUNTY.
2. GROSS AREA OF PLATTED LANDS IS 313,877 SQ.FT. (7.205 ACRES), MORE OR LESS.
3. NO BUILDINGS OR STRUCTURES SHALL BE PLACED WITHIN EASEMENTS.
4. BEARINGS SHOWN HEREON ARE ASSUMED AND REFER TO THE NORTH LINE OF SECTION 27-45-43, HAVING A BEARING OF S89°56'20"E.



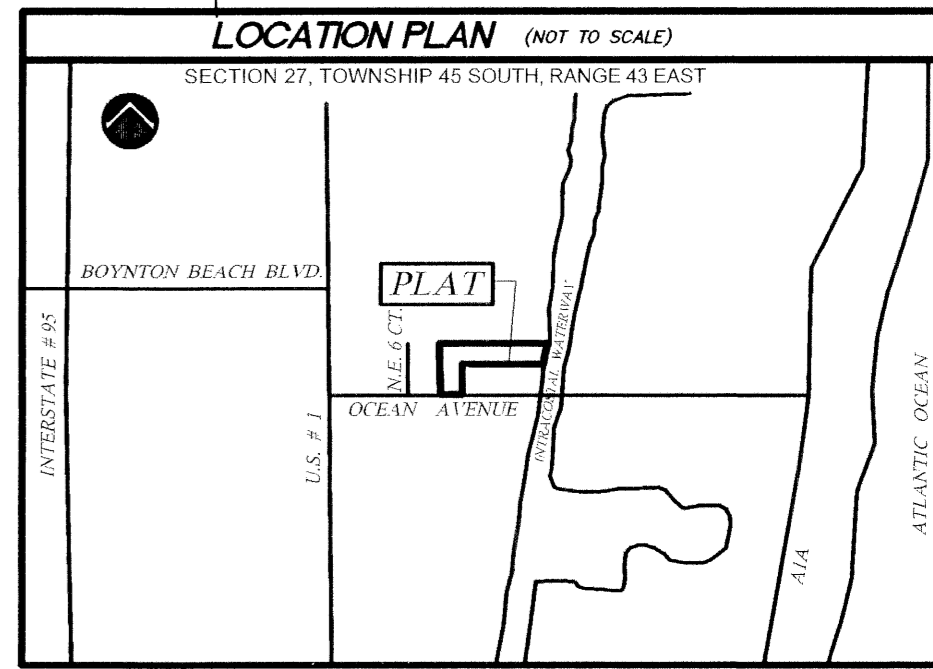
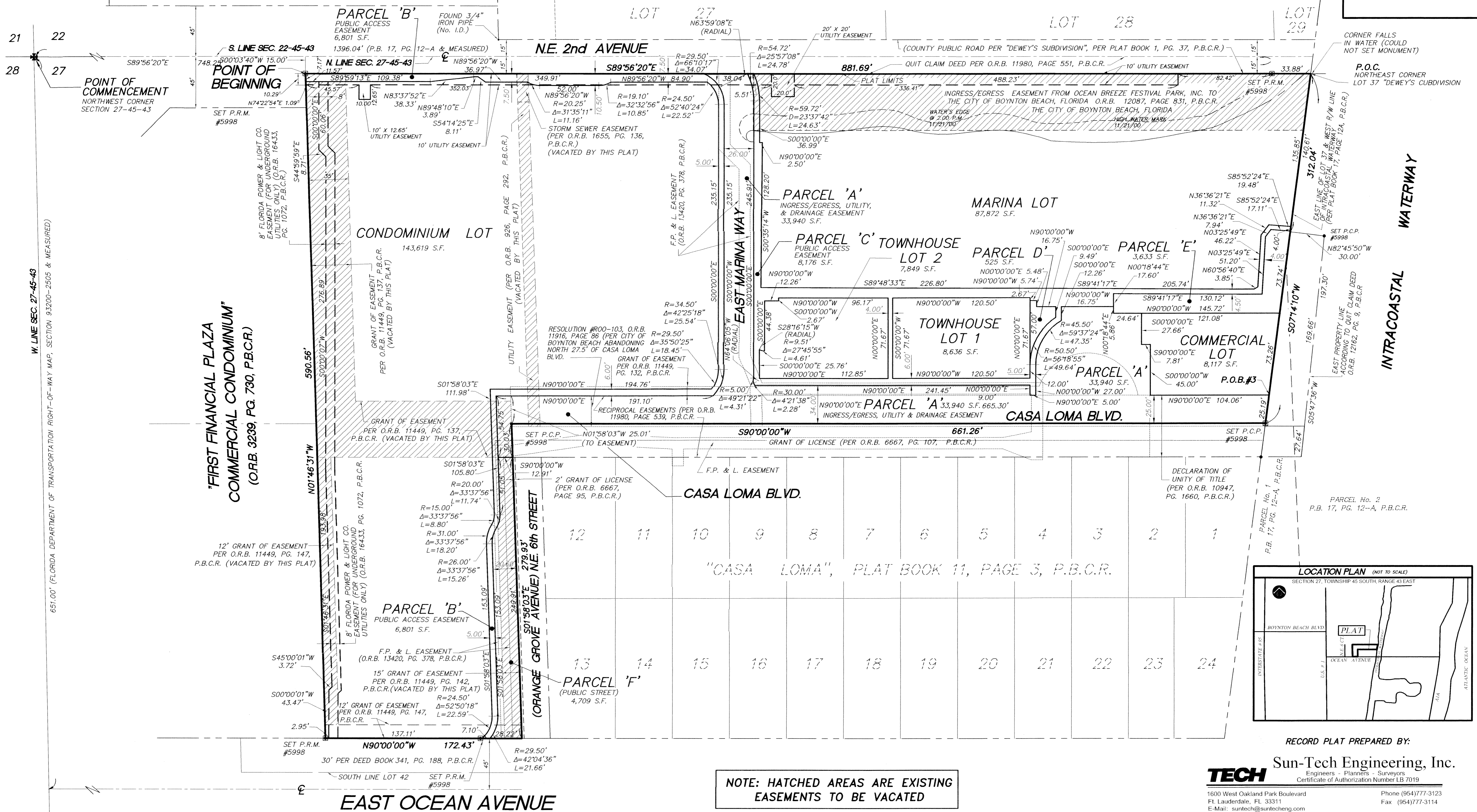
# MARINA VILLAGE AT BOYNTON BEACH

A REPLAT OF LOTS 37 AND 38, AND A PORTION OF LOTS 39 AND 42  
 "DEWEY'S SUBDIVISION", PLAT BOOK 1, PAGE 37, P.B.C.R.  
 LYING IN SECTION 27, TWP. 45 SOUTH, RANGE 43 EAST  
 CITY OF BOYNTON BEACH, PALM BEACH COUNTY, FLORIDA  
 (JANUARY, 2004)

PARCEL	AREA (SQUARE FEET)	AREA (ACRES)
MARINA LOT	87,872	2.017
CONDOMINIUM LOT	143,619	3.297
COMMERCIAL LOT	8,117	0.186
TOWNHOUSE LOT 1	8,636	0.198
TOWNHOUSE LOT 2	7,849	0.180
'A'	33,940	0.779
'B'	6,801	0.156
'C'	8,176	0.188
'D'	525	0.012
'E'	3,631	0.083
'F'	4,709	0.108
TOTAL	313,877	7.205

- LEGEND:**
- P.B.C.R. = PALM BEACH COUNTY RECORDS
  - O.R.B. = OFFICIAL RECORDS BOOK
  - ☉ = CENTERLINE
  - ☐ P.R.M. = PERMANENT REFERENCE MONUMENT (4" x 4" CONCRETE MONUMENT & CAP LB # 5998)
  - P.C.P. = PERMANENT CONTROL POINT (NAIL & DISC LB # 7019)
  - No. = NUMBER
  - PG. = PAGE
  - P.B. = PLAT BOOK
  - |- = BREAK IN LINE SCALE
  - S.F. = SQUARE FEET
  - U.E. = UTILITY EASEMENT
  - R = RADIUS
  - D = CENTRAL ANGLE
  - L = ARC LENGTH
  - F.P.&L. = FLORIDA POWER AND LIGHT

SHEET 3 OF 3 SHEETS  
 PLAT BOOK 102  
 PAGE 16



NOTE: HATCHED AREAS ARE EXISTING EASEMENTS TO BE VACATED

RECORD PLAT PREPARED BY:  
**TECH** Sun-Tech Engineering, Inc.  
 Engineers - Planners - Surveyors  
 Certificate of Authorization Number LB 7019  
 1600 West Oakland Park Boulevard Ft. Lauderdale, FL 33311  
 E-Mail: suntech@suntecheng.com Phone: (954)777-3123 Fax: (954)777-3114