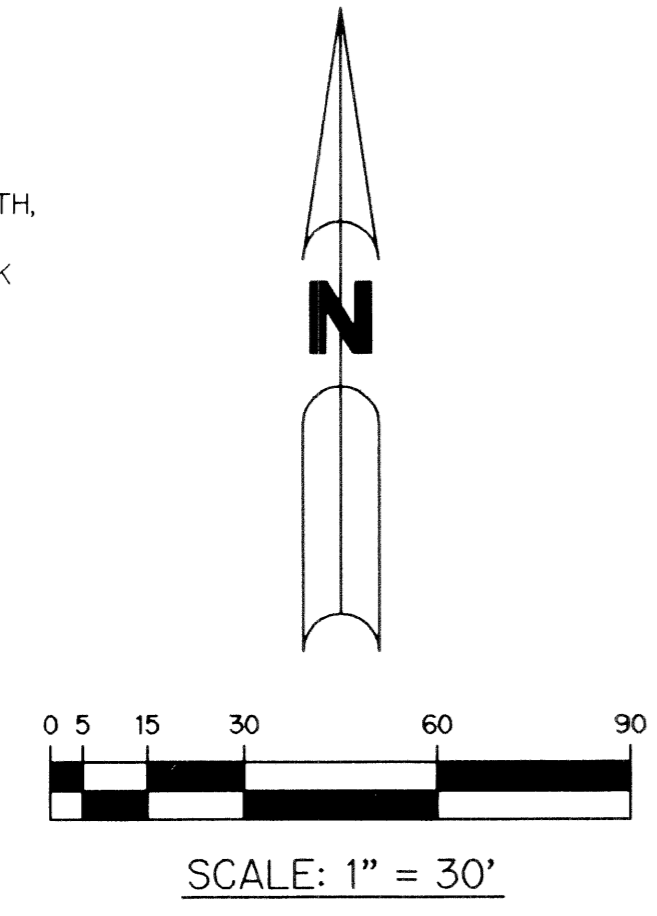
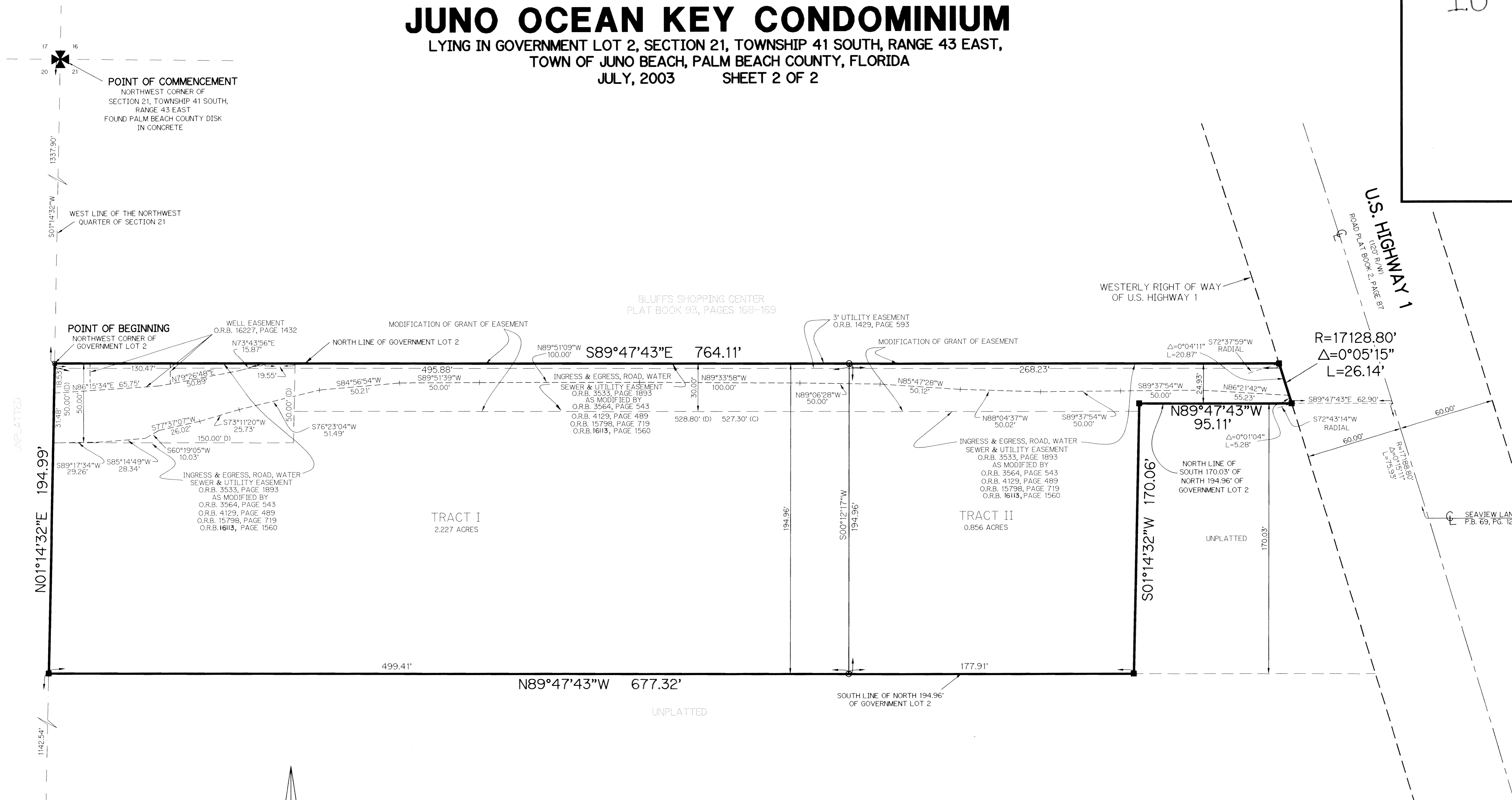


# JUNO OCEAN KEY CONDOMINIUM

LYING IN GOVERNMENT LOT 2, SECTION 21, TOWNSHIP 41 SOUTH, RANGE 43 EAST,  
TOWN OF JUNO BEACH, PALM BEACH COUNTY, FLORIDA  
JULY, 2003      SHEET 2 OF 2



- LEGEND:**
- - SET PERMANENT REFERENCE MONUMENT, L.B. #6674
  - - FOUND PERMANENT REFERENCE MONUMENT, L.B. #3010
  - - SET 5/8" IRON ROD AND CAP LB-6674
  - Δ - DELTA ANGLE
  - CB - CHORD BEARING
  - CH - CHORD DISTANCE
  - CL - CENTERLINE
  - L - ARC LENGTH
  - N.T.S. - NOT TO SCALE
  - O.R.B. - OFFICIAL RECORD BOOK
  - P.B. - PLAT BOOK
  - P.G. - PAGES
  - P.O.B. - POINT OF BEGINNING
  - P.O.C. - POINT OF COMMENCEMENT
  - P.S.M. - PROFESSIONAL SURVEYOR AND MAPPER
  - R - RADIUS
  - RAD. - RADIAL
  - R/W - RIGHT-OF-WAY

THIS INSTRUMENT PREPARED BY  
 WILBUR F. DIVINE, P.S.M. 4190, STATE OF FLORIDA  
 LAWSON, NOBLE AND WEBB, INC.  
 ENGINEERS PLANNERS SURVEYORS  
 420 COLUMBIA DRIVE  
 WEST PALM BEACH, FLORIDA 33409  
 LB-6674