

22

PINEAPPLE GROVE BUILDING

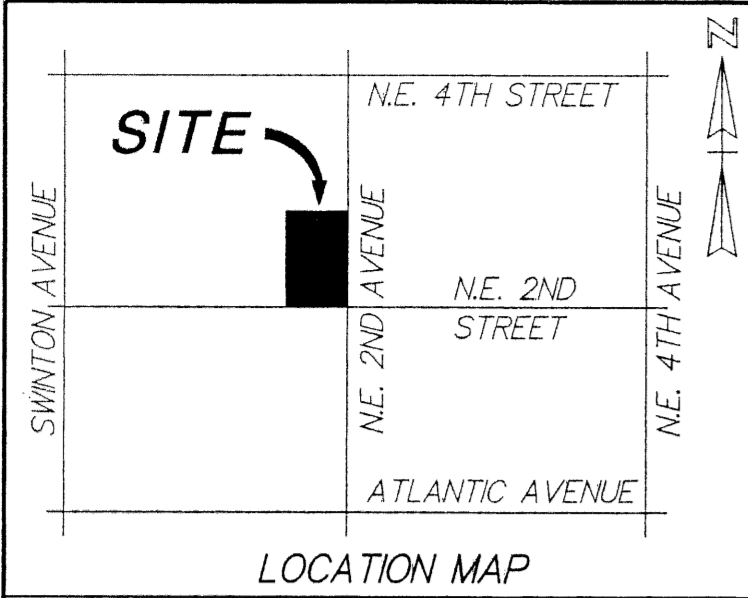
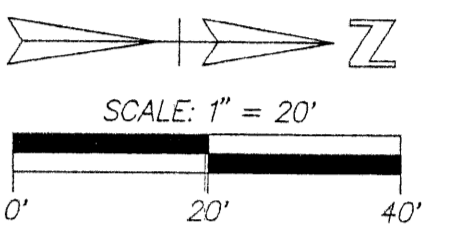
BEING A REPLAT OF LOTS 13 THROUGH 20, INCLUSIVE, TOGETHER WITH THE SOUTH 37 FEET 5 INCHES OF LOT 21, SUBDIVISION OF BLOCK 74 (PLAT BOOK 11, PAGE 12), BEING IN SECTION 16, TOWNSHIP 46 SOUTH, RANGE 43 EAST, CITY OF DELRAY BEACH, PALM BEACH COUNTY, FLORIDA.

SHEET 2 OF 2
OCTOBER 2003

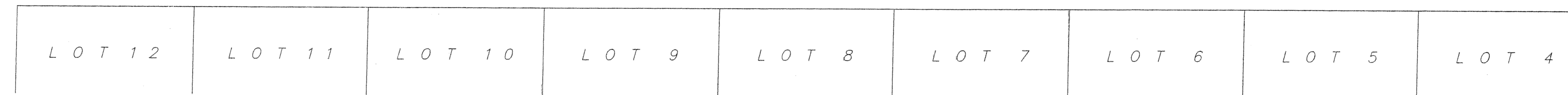
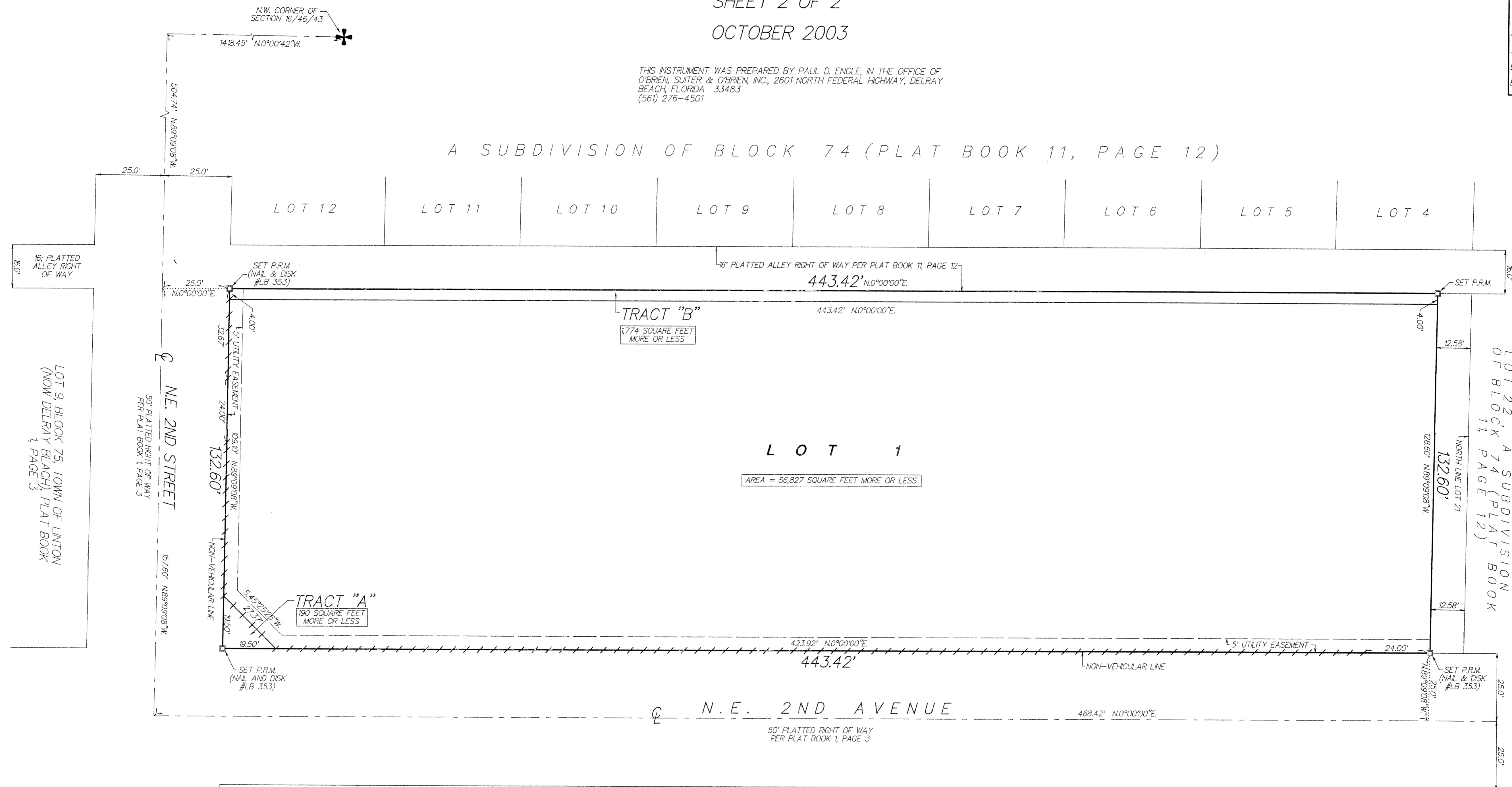
THIS INSTRUMENT WAS PREPARED BY PAUL D. ENGLE, IN THE OFFICE OF O'BRIEN, SUITER & O'BRIEN, INC., 2601 NORTH FEDERAL HIGHWAY, DELRAY BEACH, FLORIDA 33483 (561) 276-4501

COUNTY OF PALM BEACH
STATE OF FLORIDA

THIS PLAT WAS FILED FOR RECORD AT _____
THIS _____ DAY OF _____
20____ AND DULY RECORDED IN PLAT BOOK NO. _____
ON PAGE _____
DOROTHY H. WILKEN, CLERK OF CIRCUIT COURT
BY _____ D.C.



A SUBDIVISION OF BLOCK 74 (PLAT BOOK 11, PAGE 12)



SUBDIVISION OF BLOCK 82 (PLAT BOOK 12, PAGE 30)

LEGEND:
C = CENTERLINE
P.R.M. = PERMANENT REFERENCE MONUMENT
(4"x4" CONCRETE MONUMENT STAMPED
FRM LB 353)