

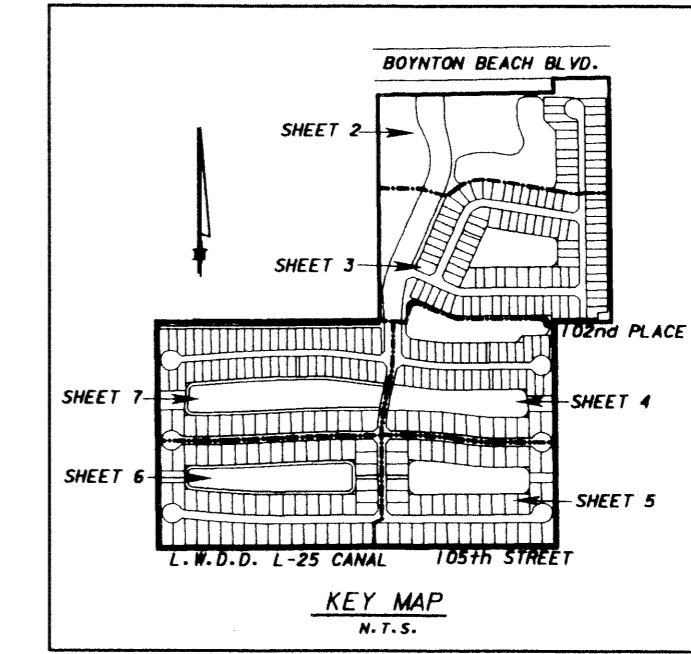
LEGEND:

- -PERMANENT REFERENCE MONUMENT, LB-6837
- -PERMANENT CONTROL POINT
- B.E. -BUFFER EASEMENT
- ⊕ -CENTERLINE
- C.H. -CHORD
- C.B. -CHORD BEARING
- D.B. -DEED BOOK
- D.E. -DRAINAGE EASEMENT
- L -ARC LENGTH
- L.A.E. -LIMITED ACCESS EASEMENT
- L.M.A.E. -LAKE MAINTENANCE ACCESS EASEMENT
- L.M.E. -LAKE MAINTENANCE EASEMENT
- L.W.D.D. -LAKE WORTH DRAINAGE EASEMENT
- O.E. -OVERHANG EASEMENT
- N.R. -NOT RADIAL
- R -RADIUS
- N.T.S. -NOT TO SCALE
- O.R.B. -OFFICIAL RECORD BOOK
- P.B. -PLAT BOOK
- P.B.F. -PALM BEACH FARMS COMPANY PLAT NO.3
- PAGES
- P.B.C.U.E. -PALM BEACH COUNTY UTILITIES EASEMENT
- R/W -RIGHT OF WAY
- U.E. -UTILITY EASEMENT
- P.S.M. -PROFESSIONAL SURVEYOR AND MAPPER

# TIVOLI LAKES P.U.D.

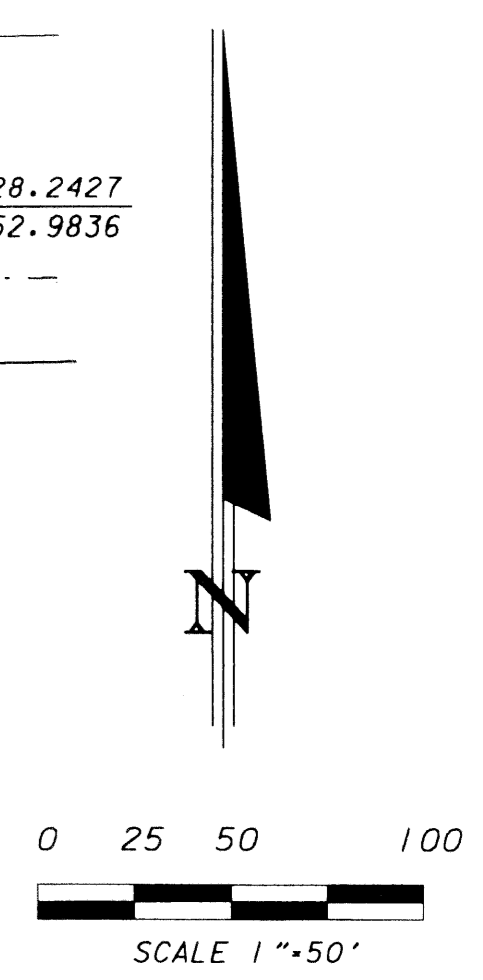
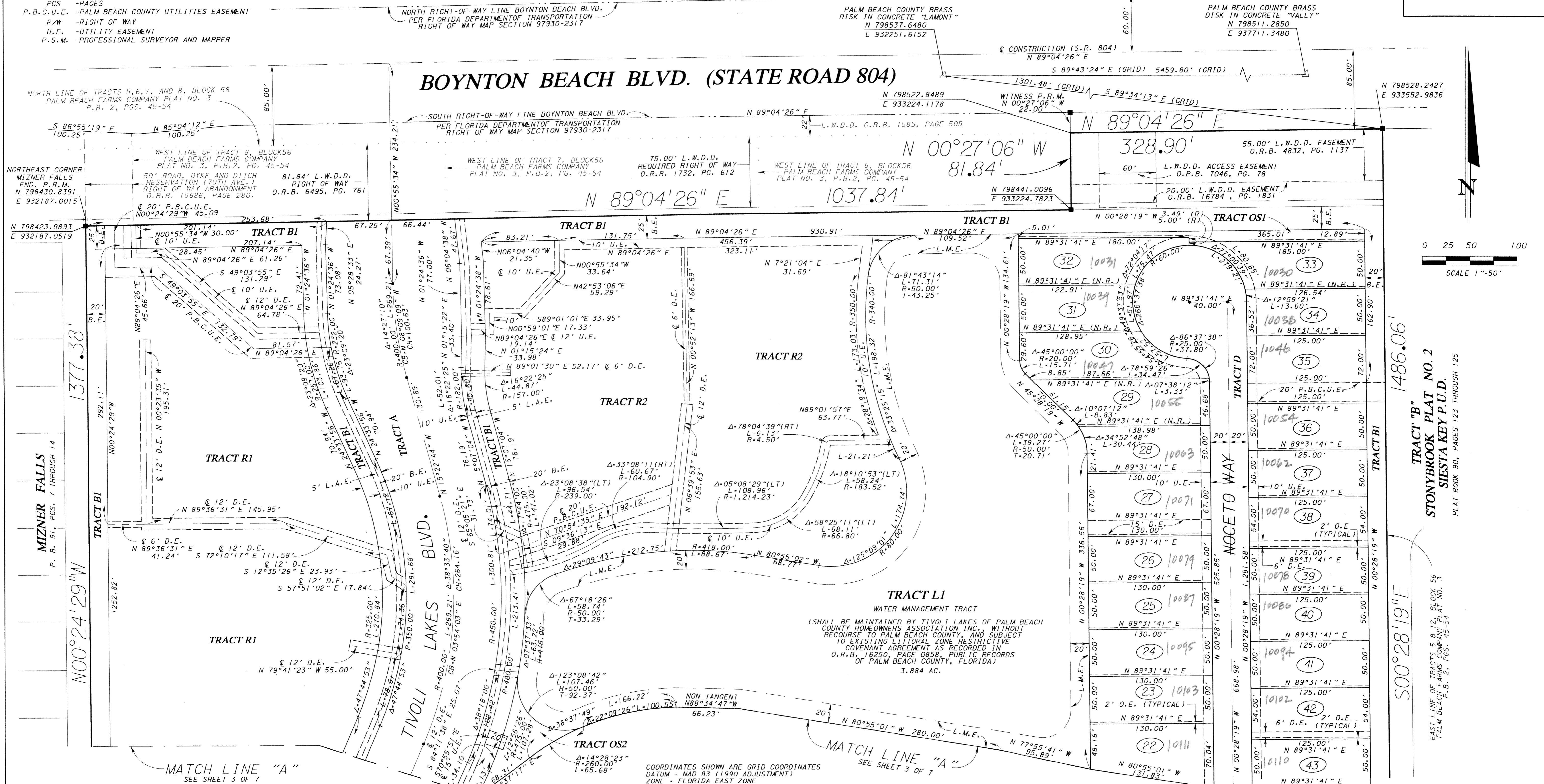
BEING A REPLAT OF TRACTS 33 THROUGH 36, 61 THROUGH 64, BLOCK 55, AND TRACTS 5, 9 THROUGH 12, 22 THROUGH 27, BLOCK 56, AND A PORTION OF TRACTS 6, 7 AND 8, BLOCK 56, AND A PORTION OF THOSE 30 FOOT AND 50 FOOT PLATTED ROAD RIGHTS OF WAY BEING COINCIDENT WITH FOREMENTIONED TRACTS, LYING AND BEING IN PALM BEACH FARMS COMPANY PLAT NO. 3 ACCORDING TO THE PLAT THEREOF RECORDED IN PLAT BOOK 2, PAGES 45 THROUGH 54, AND A PORTION OF TRACT "C", WIZNER FALLS, ACCORDING TO THE PLAT THEREOF, AS RECORDED IN PLAT BOOK 91, PAGES 7 THROUGH 14, PUBLIC RECORDS OF PALM BEACH COUNTY, FLORIDA. SECTIONS 27 AND 28, TOWNSHIP 45 SOUTH, RANGE 42 EAST, PALM BEACH COUNTY, FLORIDA.

SHEET 2 OF 7, APRIL, 2004



PALM BEACH FARMS COMPANY PLAT NO. 3  
P.B. 2, PGS. 45-54

STRATHMORE ESTATES AT BOYNTON BEACH PLAT 1  
PLAT BOOK 49, PAGE 26



TRACT "B"  
STONYBROOK PLAT NO. 2  
SIESTA KEY P.U.D.  
PLAT BOOK 90, PAGES 123 THROUGH 125

TRACT "B"  
STONYBROOK PLAT NO. 2  
SIESTA KEY P.U.D.  
PLAT BOOK 90, PAGES 123 THROUGH 125

COORDINATES SHOWN ARE GRID COORDINATES  
DATUM - NAD 83 (1990 ADJUSTMENT)  
ZONE - FLORIDA EAST ZONE  
LINEAR UNIT - U.S. SURVEY FEET  
COORDINATE SYSTEM - 1983 STATE PLANE  
TRANSVERSE MERCATOR PROJECTION  
ALL DISTANCES ARE GROUND  
SCALE FACTOR = 1.0000296  
PLAT BEARING - N00°24'29"W  
GRID BEARING - N00°25'18"W  
BEARING ROTATION (PLAT TO GRID)  
00°00'49" COUNTER CLOCKWISE

SEXTON ENGINEERING ASSOCIATES, INC.  
CONSULTING ENGINEERS AND SURVEYORS  
12300 SOUTH SHORE BLVD., SUITE 200  
WELLINGTON, FLORIDA, 33414  
PHONE: 561-792-3122, FAX: 561-792-3168  
FL REGISTRATIONS: LB0006837, EB 0007864

SUBDIVISION TIVOLI LAKES  
PAGE 24  
BLOCK 102  
PLAT NO. 35  
QUAD # 35  
DATE 9/55  
TAZ 955  
PUB 10/03/04