

LEGEND:

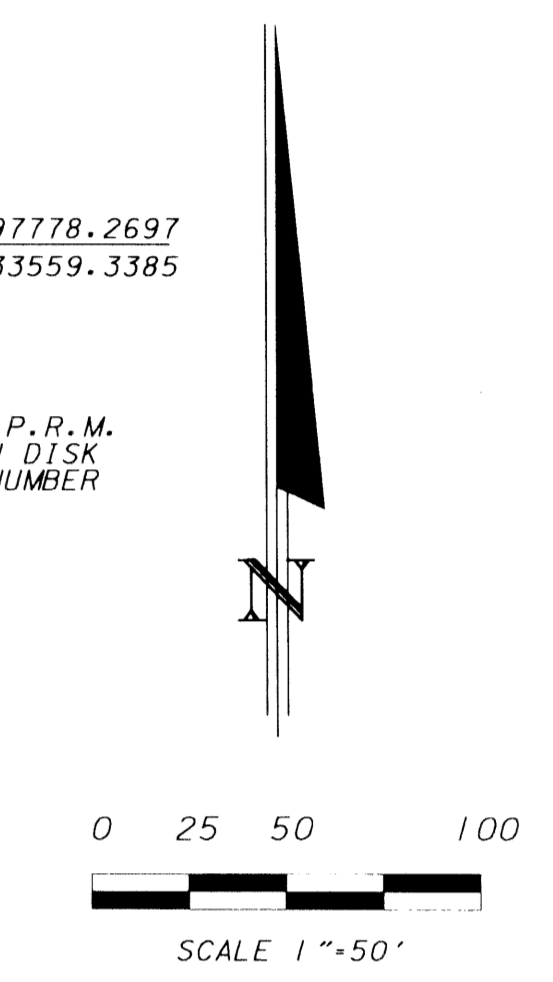
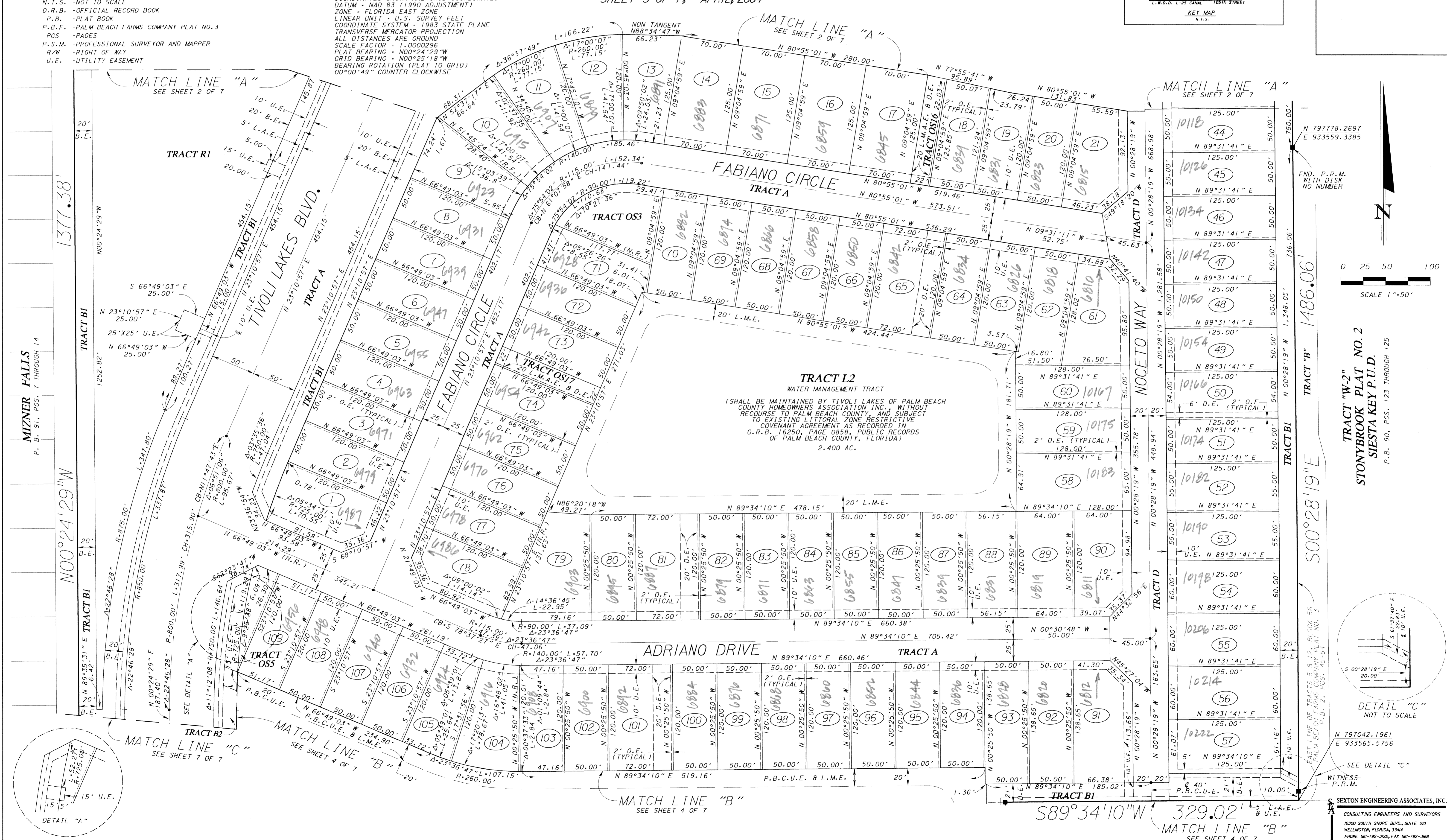
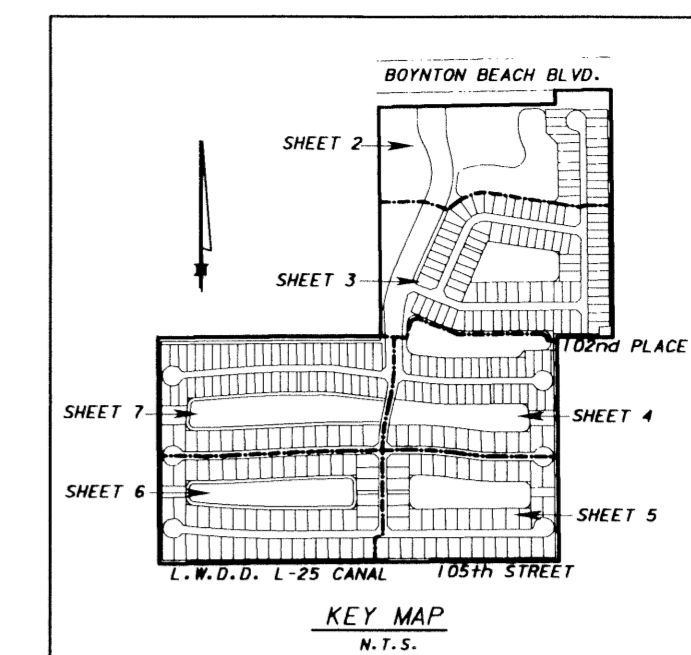
- - PERMANENT REFERENCE MONUMENT, LB-6837
- - PERMANENT CONTROL POINT
- B.E. - BUFFER EASEMENT
- ⊕ - CENTERLINE
- C.H. - CHORD
- C.B. - CHORD BEARING
- D.B. - DEED BOOK
- D.E. - DRAINAGE EASEMENT
- L. - ARC LENGTH
- P.B.C.U.E. - PALM BEACH COUNTY UTILITIES EASEMENT
- L.A.E. - LIMITED ACCESS EASEMENT
- L.M.A.E. - LAKE MAINTENANCE ACCESS EASEMENT
- L.M.E. - LAKE MAINTENANCE EASEMENT
- L.W.D.D. - LAKE WORTH DRAINAGE EASEMENT
- O.E. - OVERHANG EASEMENT
- N.R. - NOT RADIAL
- R. - RADIUS
- N.T.S. - NOT TO SCALE
- O.R.B. - OFFICIAL RECORD BOOK
- P.B. - PLAT BOOK
- P.B.F. - PALM BEACH FARMS COMPANY PLAT NO. 3
- PGS. - PAGES
- P.S.M. - PROFESSIONAL SURVEYOR AND MAPPER
- R/W - RIGHT OF WAY
- U.E. - UTILITY EASEMENT

TIVOLI LAKES P.U.D.

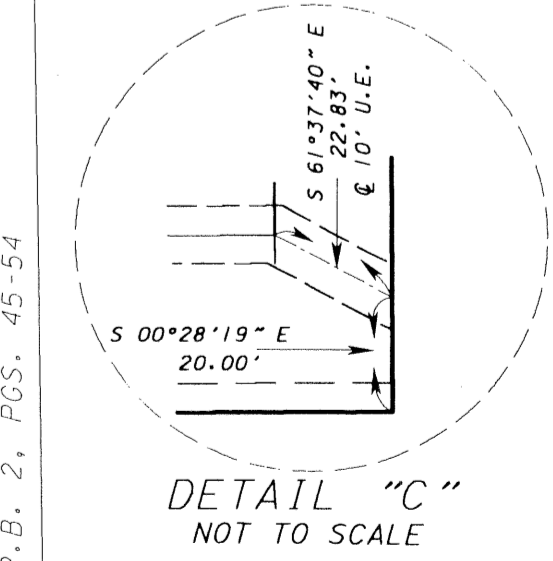
BEING A REPLAT OF TRACTS 33 THROUGH 36, 61 THROUGH 64, BLOCK 55, AND TRACTS 5, 9 THROUGH 12, 22 THROUGH 27, BLOCK 56, AND A PORTION OF TRACTS 6, 7 AND 8, BLOCK 56, AND A PORTION OF THOSE 30 FOOT AND 50 FOOT PLATTED ROAD RIGHTS OF WAY BEING COINCIDENT WITH AFOREMENTIONED TRACTS, LYING AND BEING IN PALM BEACH FARMS COMPANY PLAT NO. 3 ACCORDING TO THE PLAT THEREOF RECORDED IN PLAT BOOK 2, PAGES 45 THROUGH 54, AND A PORTION OF TRACT "C", MIZNER FALLS, ACCORDING TO THE PLAT THEREOF, AS RECORDED IN PLAT BOOK 91, PAGES 7 THROUGH 14, PUBLIC RECORDS OF PALM BEACH COUNTY, FLORIDA. SECTIONS 27 AND 28, TOWNSHIP 45 SOUTH, RANGE 42 EAST, PALM BEACH COUNTY, FLORIDA.

SHEET 3 OF 7, APRIL, 2004

COORDINATES SHOWN ARE GRID COORDINATES
 DATUM - NAD 83 (1990 ADJUSTMENT)
 ZONE - FLORIDA EAST ZONE
 LINEAR UNIT - U.S. SURVEY FEET
 COORDINATE SYSTEM - 1983 STATE PLANE
 TRANSVERSE MERCATOR PROJECTION
 ALL DISTANCES ARE GROUND
 SCALE FACTOR = 1.0000296
 PLAT BEARING = N00°24'29"W
 GRID BEARING = N00°25'18"W
 BEARING ROTATION (PLAT TO GRID)
 00°00'49" COUNTER CLOCKWISE



TRACT "W-2"
 STONYBROOK PLAT NO. 2
 SIESTA KEY P.U.D.
 P.B. 90, PGS. 123 THROUGH 125



WITNESS
 P.R.M.
 SIXTON ENGINEERING ASSOCIATES, INC.
 CONSULTING ENGINEERS AND SURVEYORS
 12300 SOUTH SHORE BLVD., SUITE 200
 WELLINGTON, FLORIDA, 33414
 PHONE 561-792-3122, FAX 561-792-3168
 FL. REGISTRATION NO. LB0006837, EB 0007864

TIVOLI LAKES P.U.D. SHEET 35
 102 103 104 105 106 107 108
 35 35 35 35 35 35 35
 955