

PERIMETER

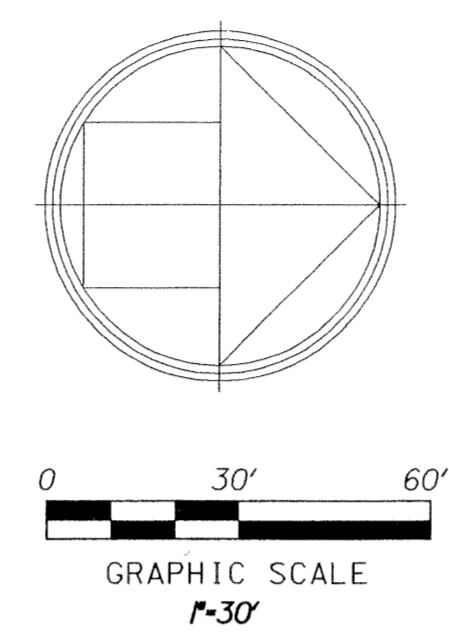
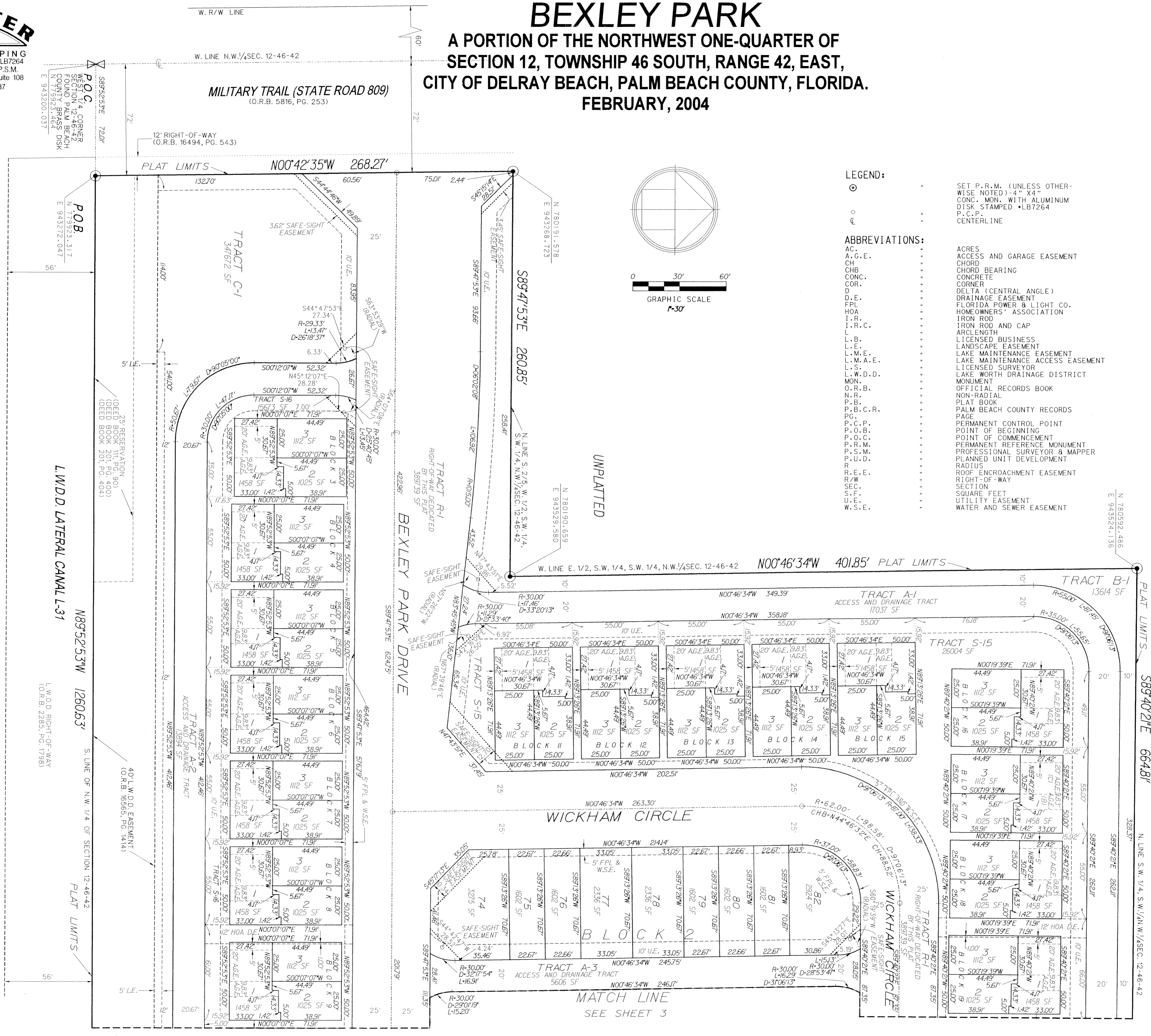
SURVEYING & MAPPING
 Certificate of Authorization No. LB7264
 Prepared by: Jeff S. Hodapp, P.S.M.
 951 Broken Sound Parkway, Suite 108
 Boca Raton, Florida 33487
 Tel: (561) 241-9988
 Fax: (561) 241-5182

BEXLEY PARK

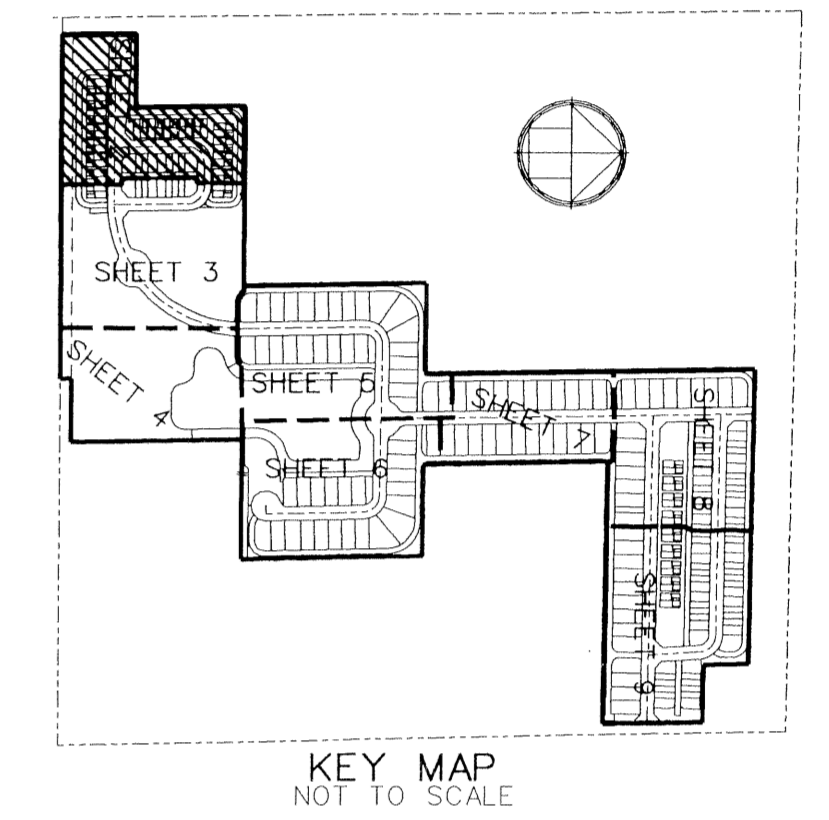
A PORTION OF THE NORTHWEST ONE-QUARTER OF SECTION 12, TOWNSHIP 46 SOUTH, RANGE 42, EAST, CITY OF DELRAY BEACH, PALM BEACH COUNTY, FLORIDA.
 FEBRUARY, 2004

49

SHEET 2 OF 9



- LEGEND:**
- ⊙ SET P.R.M. (UNLESS OTHERWISE NOTED)-4" X4" CONC. MON. WITH ALUMINUM DISK STAMPED •LB7264
 - P.C.P.
 - CENTERLINE
- ABBREVIATIONS:**
- AC. ACRES
 - A.G.E. ACCESS AND GARAGE EASEMENT
 - CH. CHORD
 - CONC. CHORD BEARING
 - COR. CONCRETE
 - D. CORNER
 - D.E. DELTA (CENTRAL ANGLE)
 - F.F.L. DRAINAGE EASEMENT
 - FL. FLORIDA POWER & LIGHT CO.
 - HOA. HOMEOWNERS ASSOCIATION
 - I.R. IRON ROD AND CAP
 - I.R.C. IRON ROD AND CAP
 - L. LENGTH
 - L.B. LICENSED BUSINESS
 - L.E. LANDSCAPE EASEMENT
 - L.M.E. LAKE MAINTENANCE EASEMENT
 - L.M.A.E. LAKE MAINTENANCE ACCESS EASEMENT
 - L.S. LICENSED SURVEYOR
 - L.W.D.D. LAKE WORTH DRAINAGE DISTRICT
 - MON. MONUMENT
 - O.R.B. OFFICIAL RECORDS BOOK
 - N.R. NON-RADIAL
 - P.B. PLAT BOOK
 - P.B.C.R. PALM BEACH COUNTY RECORDS
 - P.G. PAGE
 - P.C.P. PERMANENT CONTROL POINT
 - P.O.B. POINT OF BEGINNING
 - P.O.C. POINT OF COMMENCEMENT
 - P.R.M. PERMANENT REFERENCE MONUMENT
 - P.S.M. PROFESSIONAL SURVEYOR & MAPPER
 - P.U.D. PLANNED UNIT DEVELOPMENT
 - R. RADIUS
 - R.E.E. ROOF ENCROACHMENT EASEMENT
 - R/W. RIGHT-OF-WAY
 - SEC. SECTION
 - S.F. SQUARE FEET
 - U.L.E. UTILITY EASEMENT
 - W.S.E. WATER AND SEWER EASEMENT



L.W.D.D. LATERAL CANAL L-31
 N89°52'53"W 1260.63'
 S LINE OF N.W. 1/4 OF SECTION 12-46-42
 (O.R.B. 2285, PG. 1789)

MATCH LINE
 SEE SHEET 3