

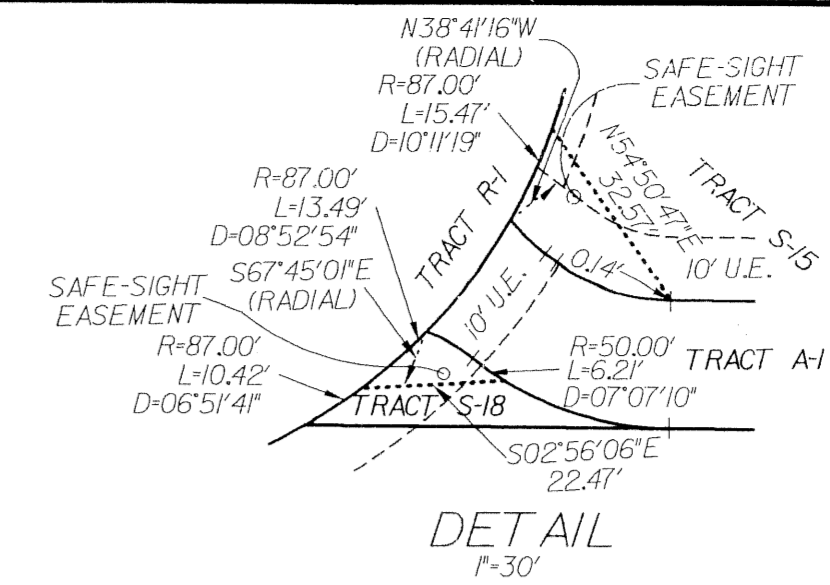
PERIMETER

SURVEYING & MAPPING
 Certificate of Authorization No. LB7264
 Prepared by: Jeff S. Hodapp, P.S.M.
 951 Broken Sound Parkway, Suite 108
 Boca Raton, Florida 33487
 Tel: (561) 241-9988
 Fax: (561) 241-5182

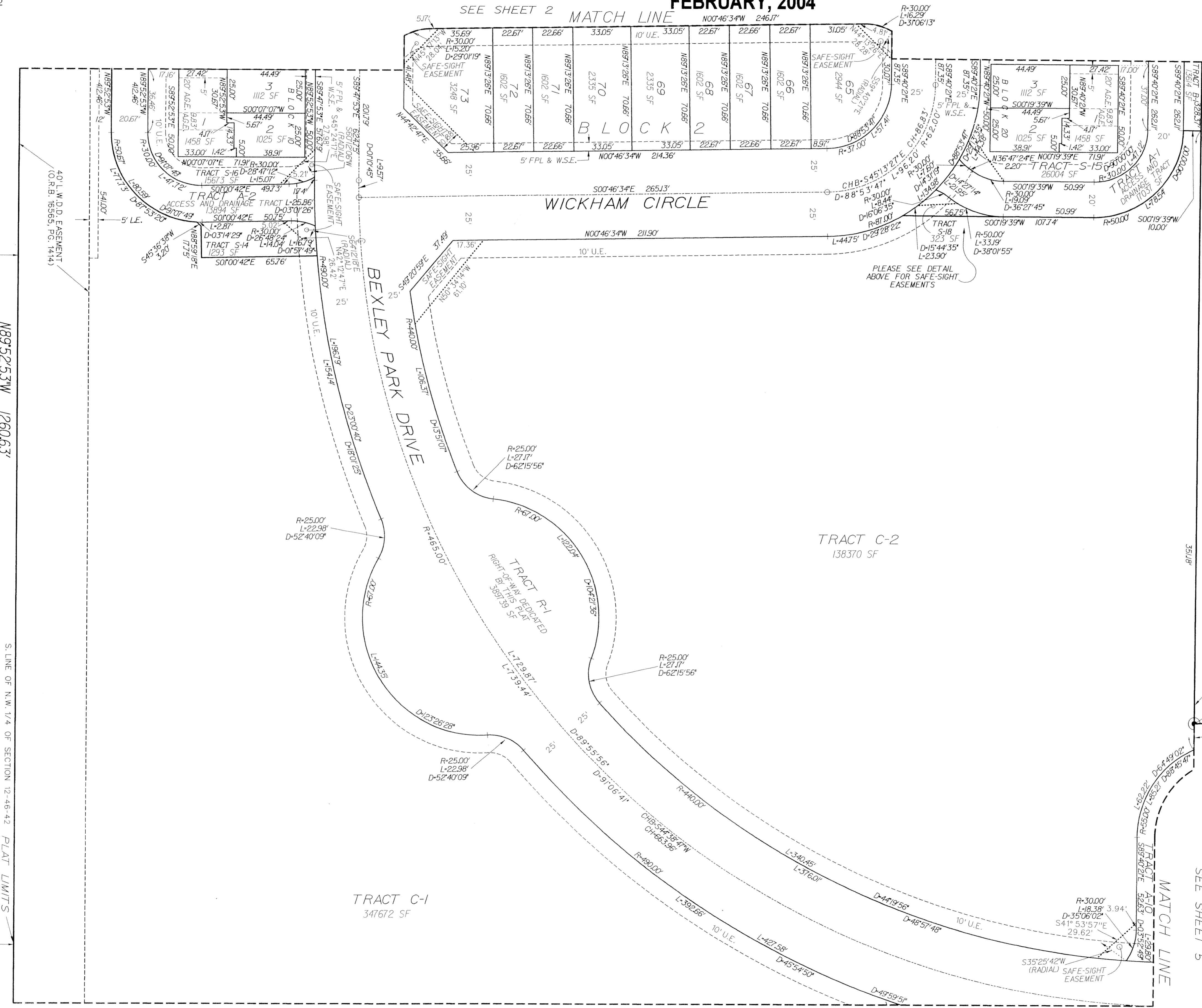
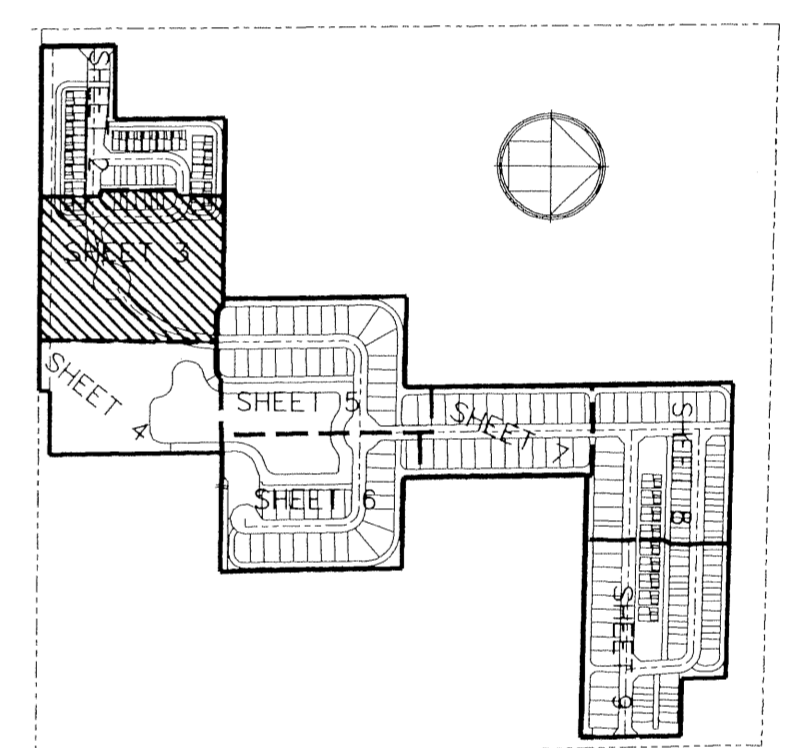
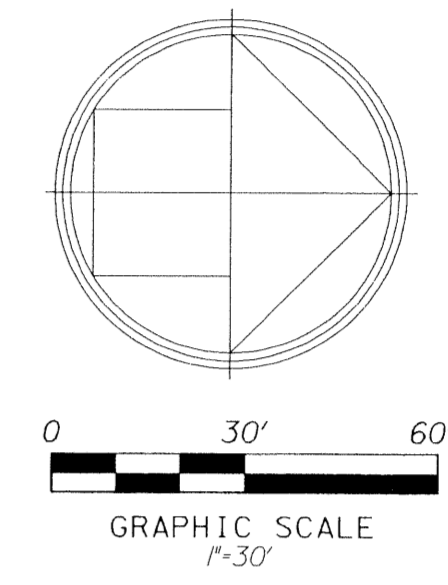
BEXLEY PARK

A PORTION OF THE NORTHWEST ONE-QUARTER OF
 SECTION 12, TOWNSHIP 46 SOUTH, RANGE 42, EAST,
 CITY OF DELRAY BEACH, PALM BEACH COUNTY, FLORIDA.
FEBRUARY, 2004

50



SHEET 3 OF 9



- LEGEND:**
- ⊙ SET P.R.M. (UNLESS OTHERWISE NOTED)-4" X4" CONC. MON. WITH ALUMINUM DISK STAMPED •LB7264 P.C.P. CENTERLINE
- ABBREVIATIONS:**
- AC. ACRES
 - A.G.E. ACCESS AND GARAGE EASEMENT
 - CH CHORD
 - CHB CHORD BEARING
 - CONC. CONCRETE
 - COR. CORNER
 - Δ DELTA (CENTRAL ANGLE)
 - D.E. DRAINAGE EASEMENT
 - HOA HOMEOWNERS' ASSOCIATION
 - I.R. IRON ROD
 - I.R.C. IRON ROD AND CAP
 - L. LENGTH
 - L.B. LICENSED BUSINESS
 - L.E. LANDSCAPE EASEMENT
 - L.M.E. LAKE MAINTENANCE EASEMENT
 - L.M.A.E. LAKE MAINTENANCE ACCESS EASEMENT
 - L.S. LICENSED SURVEYOR
 - L.W.D.D. LAKE WORTH DRAINAGE DISTRICT
 - MON. MONUMENT
 - O.R.B. OFFICIAL RECORDS BOOK
 - N.R. NON-RADIAL
 - P.B. PLAT BOOK
 - P.B.C.R. PALM BEACH COUNTY RECORDS
 - PG. PAGE
 - P.C.P. PERMANENT CONTROL POINT
 - P.O.B. POINT OF BEGINNING
 - P.O.C. POINT OF COMMENCEMENT
 - P.R.M. PERMANENT REFERENCE MONUMENT
 - P.S.M. PROFESSIONAL SURVEYOR & MAPPER
 - P.U.D. PLANNED UNIT DEVELOPMENT
 - R. RADIUS
 - R.E.E. ROOF ENCROACHMENT EASEMENT
 - R.O.W. RIGHT-OF-WAY
 - SEC. SECTION
 - S.F. SQUARE FEET
 - U.E. UTILITY EASEMENT
 - W.S.E. WATER AND SEWER EASEMENT
 - FPL FLORIDA POWER & LIGHT CO.