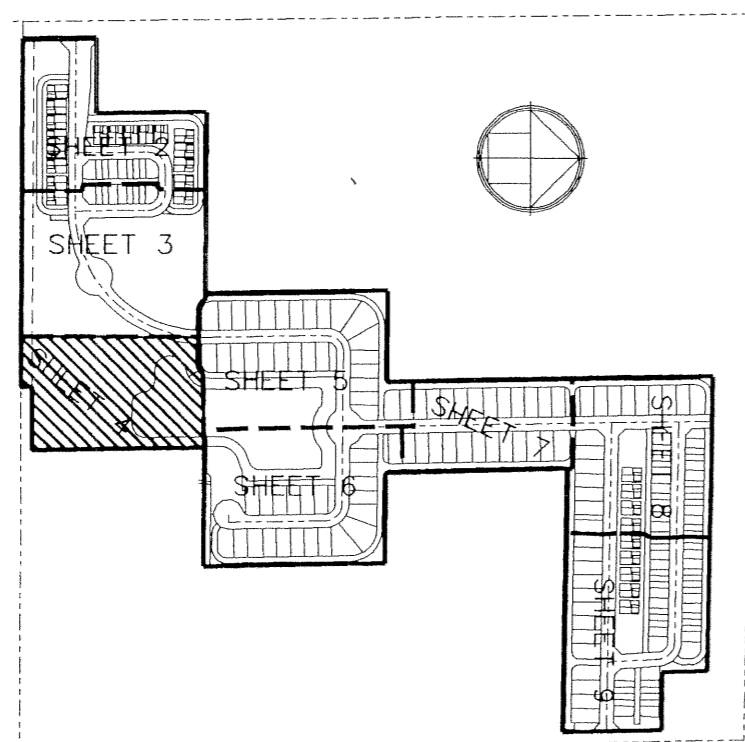


PERIMETER

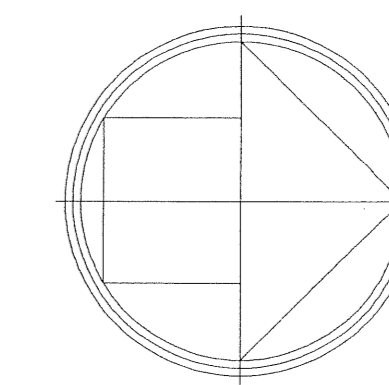
SURVEYING & MAPPING
 Certificate of Authorization No. LB7264
 Prepared by: Jeff S. Hodapp, P.S.M.
 951 Broken Sound Parkway, Suite 108
 Boca Raton, Florida 33487
 Tel: (561) 241-9988
 Fax: (561) 241-5182



KEY MAP
NOT TO SCALE

BEXLEY PARK

A PORTION OF THE NORTHWEST ONE-QUARTER OF
 SECTION 12, TOWNSHIP 46 SOUTH, RANGE 42, EAST,
 CITY OF DELRAY BEACH, PALM BEACH COUNTY, FLORIDA.
 FEBRUARY, 2004



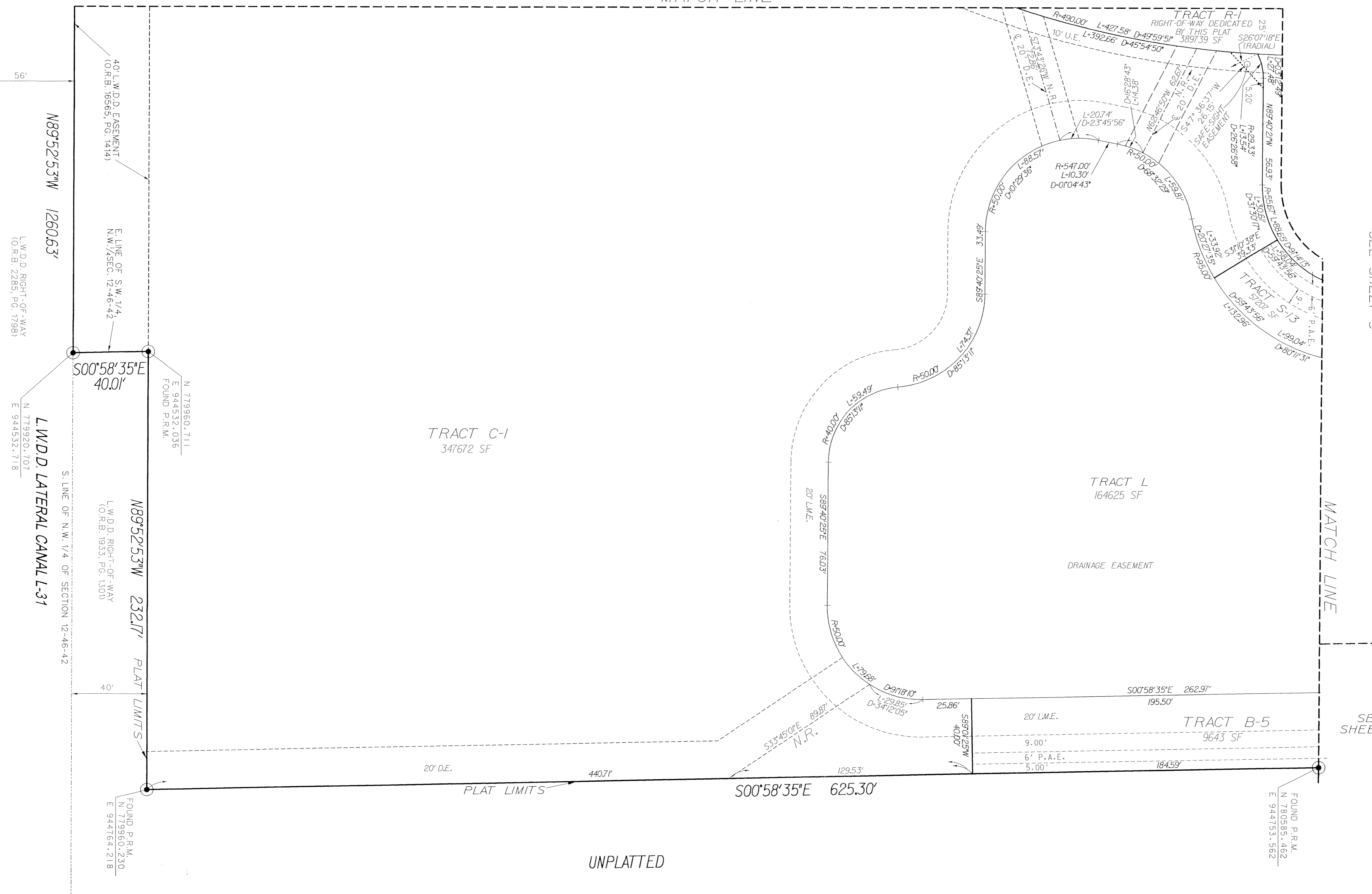
0 30' 60'
 GRAPHIC SCALE
 1"=30'

51

SHEET 4 OF 9

SEE SHEET 3

MATCH LINE



SEE SHEET 5

MATCH LINE

SEE SHEET 6

UNPLATTED

LEGEND:

- ⊙ SET P.R.M. (UNLESS OTHERWISE NOTED)-4" X 4" CONC. MON. WITH ALUMINUM DISK STAMPED •LB7264
- ⊙ CORNER
- ⊙ CENTERLINE

ABBREVIATIONS:

- AC. ACRES
- A.G.E. ACCESS AND GARAGE EASEMENT
- CH CHORD
- CHB CHORD BEARING
- CONC. CONCRETE
- COR. CORNER
- D DELTA (CENTRAL ANGLE)
- D.E. DRAINAGE EASEMENT
- HOA HOMEOWNERS' ASSOCIATION
- I.R. IRON ROD
- I.R.C. IRON ROD AND CAP
- L ARCLENGTH
- L.B. LICENSED BUSINESS
- L.E. LANDSCAPE EASEMENT
- L.M.E. LAKE MAINTENANCE EASEMENT
- L.M.A.E. LAKE MAINTENANCE ACCESS EASEMENT
- L.S. LICENSED SURVEYOR
- L.W.D.D. LAKE WORTH DRAINAGE DISTRICT
- MON. MONUMENT
- O.R.B. OFFICIAL RECORDS BOOK
- N.R. NON-RADIAL
- P.B. PLAT BOOK
- P.B.C.R. PALM BEACH COUNTY RECORDS
- PG. PAGE
- P.C.P. PERMANENT CONTROL POINT
- P.O.B. POINT OF BEGINNING
- P.O.C. POINT OF COMMENCEMENT
- P.R.M. PERMANENT REFERENCE MONUMENT
- P.S.M. PROFESSIONAL SURVEYOR & MAPPER
- P.U.D. PLANNED UNIT DEVELOPMENT
- R RADIUS
- R.E.E. ROOF ENCROACHMENT EASEMENT
- R/W. RIGHT-OF-WAY
- SEC. SECTION
- S.F. SQUARE FEET
- U.F. UTILITY EASEMENT
- W.S.E. WATER AND SEWER EASEMENT
- FPL FLORIDA POWER & LIGHT CO.