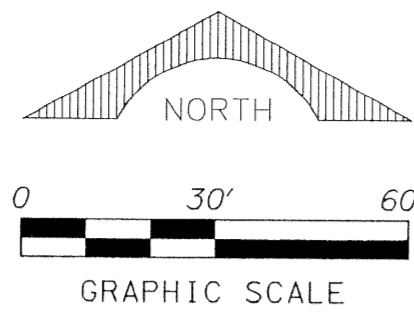


PERIMETER

SURVEYING & MAPPING
Prepared by: Jeff S. Hodapp, P.S.M.
Certificate of Authorization No. LB7264
951 Broken Sound Parkway, Suite 320
Boca Raton, Florida 33487
Tel: (561) 241-9988
Fax: (561) 241-5182



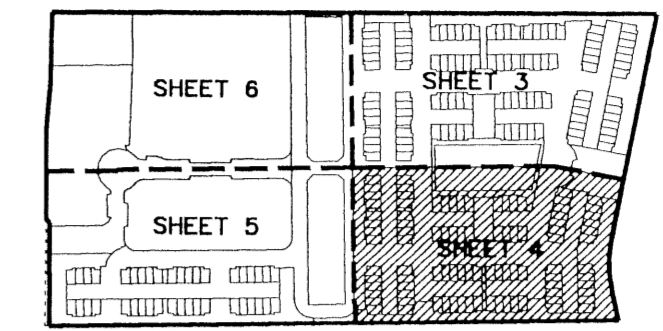
RENAISSANCE COMMONS, A P.U.D.

A REPLAT OF A PORTION OF "MOTOROLA" (P.B. 43, PGS. 139-140, P.B.C.R.)

IN SECTION 20, TOWNSHIP 45 SOUTH, RANGE 43, EAST,
CITY OF BOYNTON BEACH, PALM BEACH COUNTY, FLORIDA.

APRIL, 2004

60



KEY MAP
NOT TO SCALE

SEE SHEET 3
MATCH LINE

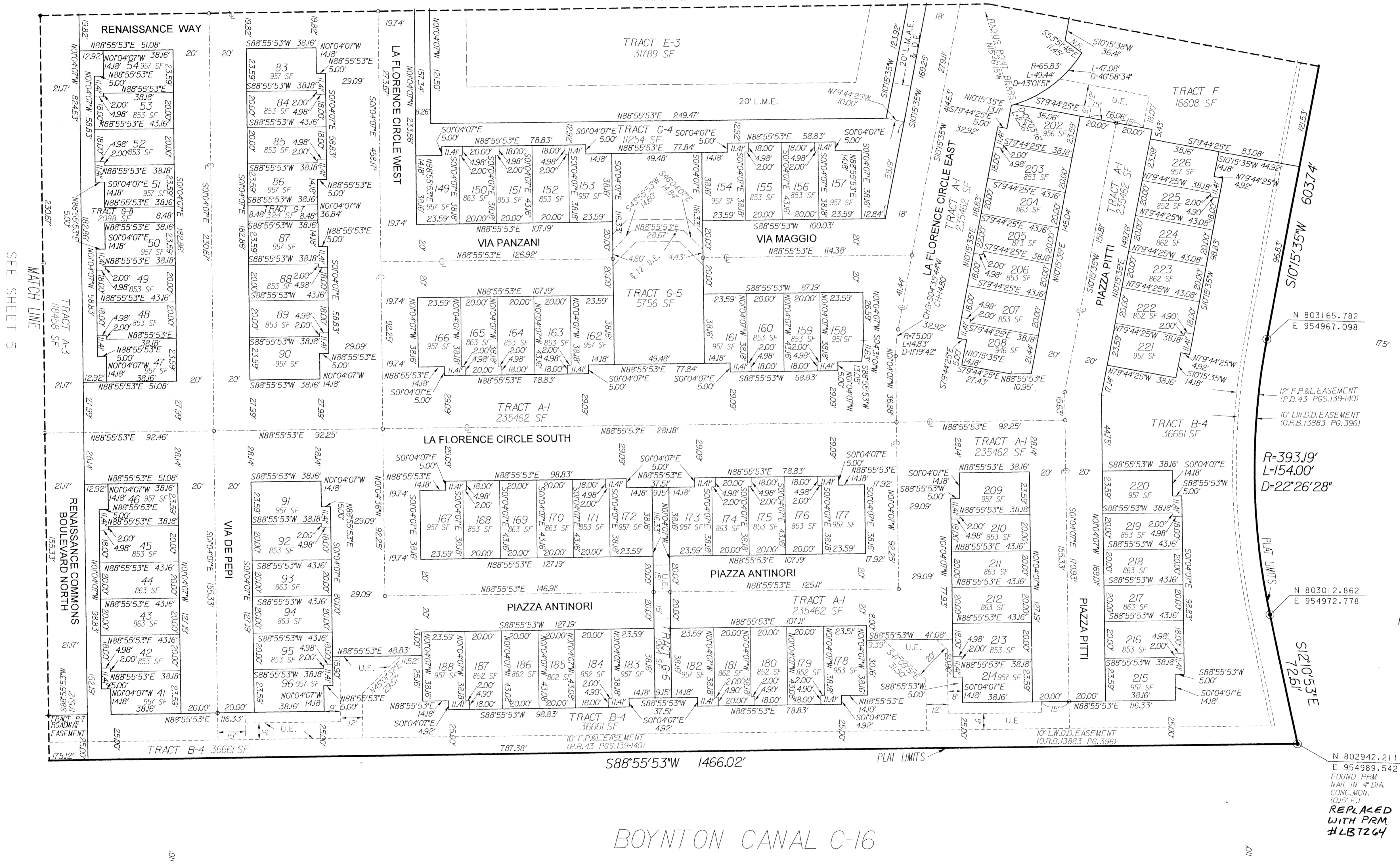
SHEET 4 OF 6

LEGEND:

- SET P.R.M. (UNLESS OTHERWISE NOTED)-4" DIAMETER ALUMINUM DISK IN CONC. MON. STAMPED #LB7264
- P.C.P. CENTERLINE

ABBREVIATIONS:

- AC. ACRES
- CH. CHORD
- CHB. CHORD BEARING
- CONC. CONCRETE
- COR. CORNER
- Δ. DELTA (CENTRAL ANGLE)
- D.E. DRAINAGE EASEMENT
- I.R. IRON ROD
- I.R.C. IRON ROD AND CAP
- AR. LENGTH
- L.A.E. LIMITED ACCESS EASEMENT
- L.B. LICENSED BUSINESS
- L.B.E. LANDSCAPE BUFFER EASEMENT
- L.M.E. LAKE MAINTENANCE EASEMENT
- L.M.A.E. LAKE MAINTENANCE ACCESS EASEMENT
- L.S. LICENSED SURVEYOR
- L.S.E. LIFT STATION EASEMENT
- L.W.D.D. LAKE WORTH DRAINAGE DISTRICT
- MON. MONUMENT
- O.R.B. OFFICIAL RECORDS BOOK
- NON-RADIAL NON-RADIAL
- P.B. PLAT BOOK
- P.B.C.R. PALM BEACH COUNTY RECORDS
- P.G. PAGE
- P.C.P. PERMANENT CONTROL POINT
- P.O.B. POINT OF BEGINNING
- P.O.C. POINT OF COMMENCEMENT
- P.R.M. PERMANENT REFERENCE MONUMENT
- P.S.M. PROFESSIONAL SURVEYOR & MAPPER
- P.U.D. PLANNED UNIT DEVELOPMENT
- R. RADIUS
- R/W RIGHT-OF-WAY
- SEC. SECTION
- S.F. SQUARE FEET
- U.E. UTILITY EASEMENT



N 803165.782
E 954967.098
175'

N 803012.862
E 954972.778
175'

N 802942.211
E 954989.542
FOUND PRM
NAIL IN 4" DIA.
CONC. MON.
(O.R.B.)
REPLACED
WITH PRM
#LB7264

L.W.D.D. CANAL E-4

BOYNTON CANAL C-16