

ABBREVIATIONS:

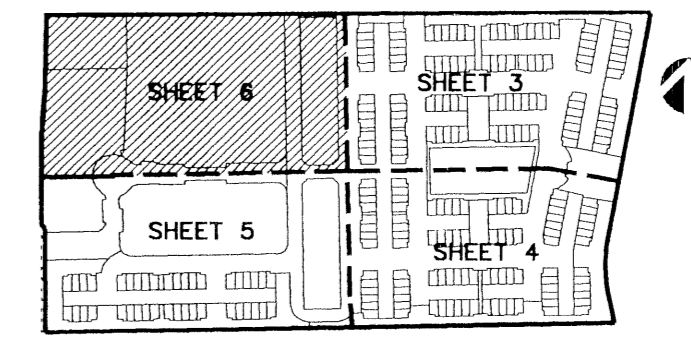
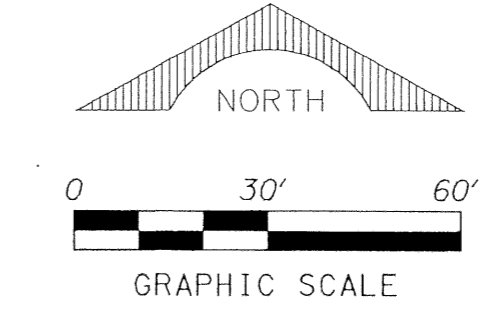
AC.	ACRES
CH	CHORD BEARING
CONC.	CONCRETE
COR.	CORNER
D.	DELTA (CENTRAL ANGLE)
D.E.	DRAINAGE EASEMENT
I.R.	IRON ROD
I.R.C.	IRON ROD AND CAP
L.	ARCLength
L.A.E.	LIMITED ACCESS EASEMENT
L.B.E.	LICENSED BUSINESS
L.M.E.	LANDSCAPE BUFFER EASEMENT
L.M.A.E.	LAKE MAINTENANCE EASEMENT
L.M.A.E.	LAKE MAINTENANCE ACCESS EASEMENT
L.S.	LICENSED SURVEYOR
L.S.E.	LIFT STATION EASEMENT
L.W.D.D.	LAKE WORTH DRAINAGE DISTRICT
MON.	MONUMENT
O.R.B.	OFFICIAL RECORDS BOOK
N.R.	NON-RADIAL
P.B.	PLAT BOOK
P.B.C.R.	PALM BEACH COUNTY RECORDS
P.C.	PAGE
P.C.P.	PERMANENT CONTROL POINT
P.O.B.	POINT OF BEGINNING
P.O.C.	POINT OF COMMENCEMENT
P.R.M.	PERMANENT REFERENCE MONUMENT
P.S.M.	PROFESSIONAL SURVEYOR & MAPPER
P.U.D.	PLANNED UNIT DEVELOPMENT
R.	RADIUS
R/W	RIGHT-OF-WAY
SEC.	SECTION
S.F.	SQUARE FEET
U.E.	UTILITY EASEMENT
W.S.E.	WATER AND SEWER EASEMENT

RENAISSANCE COMMONS, A P.U.D.

A REPLAT OF A PORTION OF "MOTOROLA" (P.B. 43, PGS. 139-140, P.B.C.R.)
 IN SECTION 20, TOWNSHIP 45 SOUTH, RANGE 43, EAST,
 CITY OF BOYNTON BEACH, PALM BEACH COUNTY, FLORIDA.
 APRIL, 2004

LEGEND:

- SET P.R.M. (UNLESS OTHERWISE NOTED)-4" DIAMETER ALUMINUM DISK IN CONC. MON. STAMPED "LB7264 P.S.M. CENTERLINE



SHEET 6 OF 6

62

