

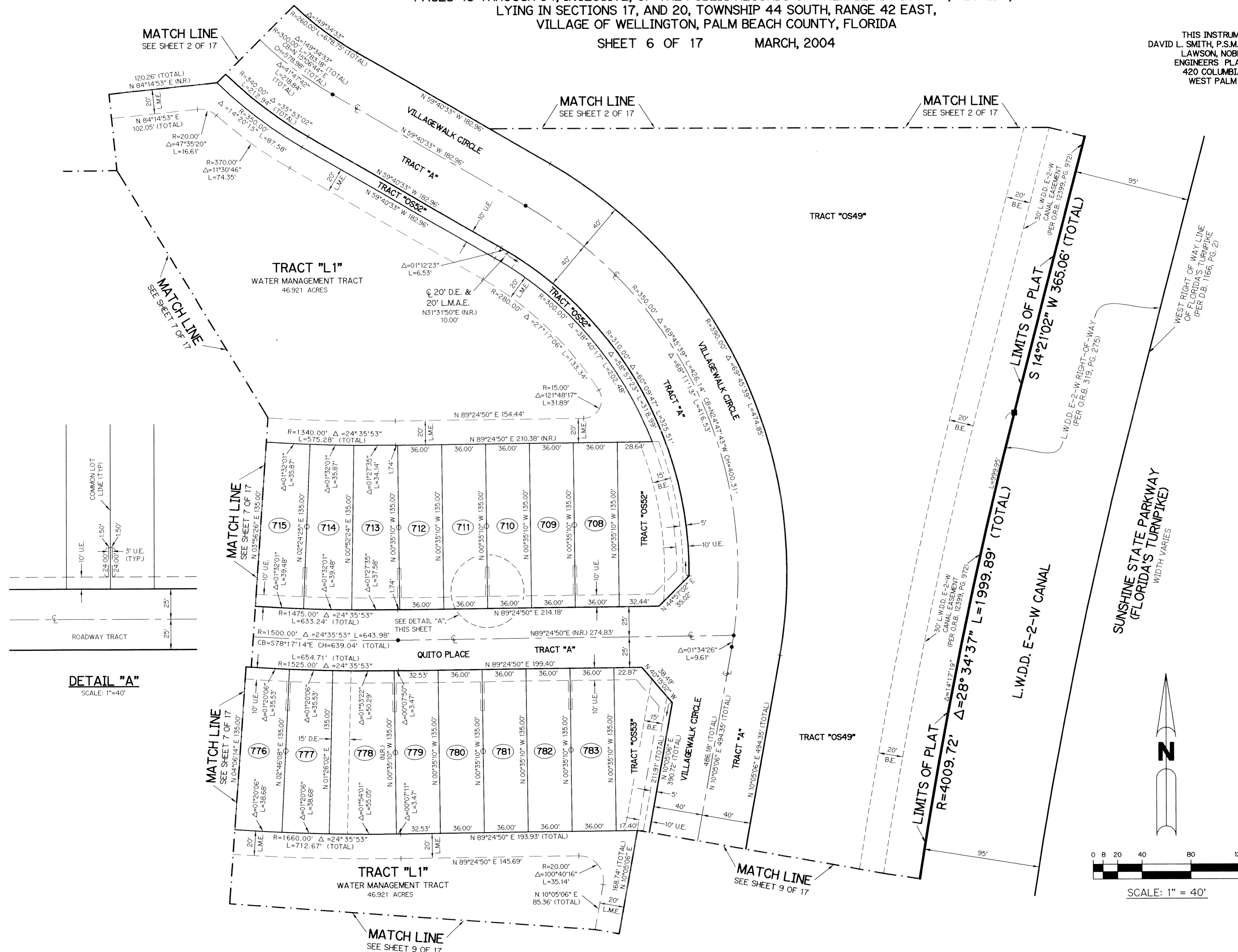
# VILLAGEWALK OF WELLINGTON - PLAT FIVE

68

BEING A REPLAT OF A PORTION OF TRACTS 28, 29, 30, 31, 34, 37, 44, 47, 50, 53, 54, 58, 59, 63,  
AND ALL OF TRACTS 35, 36, 45, 46, 51, 52, 60, 61, AND 62, TOGETHER WITH THAT PORTION OF THE  
ROAD, DYKE AND DITCH RESERVATIONS, 30 FEET IN WIDTH, LYING ADJACENT TO AND CONTIGUOUS WITH THOSE TRACTS,  
ALL IN BLOCK 20, ACCORDING TO THE PLAT OF PALM BEACH FARMS CO. PLAT NO. 3 AS RECORDED IN PLAT BOOK 2,  
PAGES 45 THROUGH 54, INCLUSIVE, OF THE PUBLIC RECORDS OF PALM BEACH COUNTY, FLORIDA,  
LYING IN SECTIONS 17, AND 20, TOWNSHIP 44 SOUTH, RANGE 42 EAST,  
VILLAGE OF WELLINGTON, PALM BEACH COUNTY, FLORIDA

SHEET 6 OF 17 MARCH, 2004

THIS INSTRUMENT PREPARED BY  
DAVID L. SMITH, P.S.M. 4951, STATE OF FLORIDA  
LAWSON, NOBLE AND WEBB, INC.  
ENGINEERS PLANNERS SURVEYORS  
420 COLUMBIA DRIVE, SUITE 110  
WEST PALM BEACH, FLORIDA



- LEGEND:**
- - PERMANENT REFERENCE MONUMENT, LB #6674
  - - PERMANENT CONTROL POINT, LB #6674
  - Δ - DELTA ANGLE
  - ⊙ - CENTERLINE
  - BE - BUFFER EASEMENT
  - CB - CHORD BEARING
  - CH - CHORD LENGTH
  - DB - DEED BOOK
  - DE - DRAINAGE EASEMENT
  - L - ARC LENGTH
  - L.A.E. - LIMITED ACCESS EASEMENT
  - L.M.A.E. - LAKE MAINTENANCE ACCESS EASEMENT
  - L.M.E. - LAKE MAINTENANCE EASEMENT
  - L.W.D.D. - LAKE WORTH DRAINAGE DISTRICT
  - N.R. - NOT RADIAL
  - N.T.S. - NOT TO SCALE
  - O.R.B. - OFFICIAL RECORD BOOK
  - P.B. - PLAT BOOK
  - P.S. - PAGES
  - P.O.B. - POINT OF BEGINNING
  - P.O.C. - POINT OF COMMENCEMENT
  - P.R.M. - PERMANENT REFERENCE MONUMENT
  - P.S.M. - PROFESSIONAL SURVEYOR AND MAPPER
  - R - RADIUS
  - RAD - RADIAL
  - R.W. - RIGHT-OF-WAY
  - S.T. - SURVEY TIE
  - U.E. - UTILITY EASEMENT
  - V.E. - VILLAGEWALK EASEMENT
  - - INDICATES COMMON LOT LINE
  - ▲ - INDICATES ZERO SIDE FOR BUILDING

**DETAIL "A"**  
SCALE: 1"=40'

