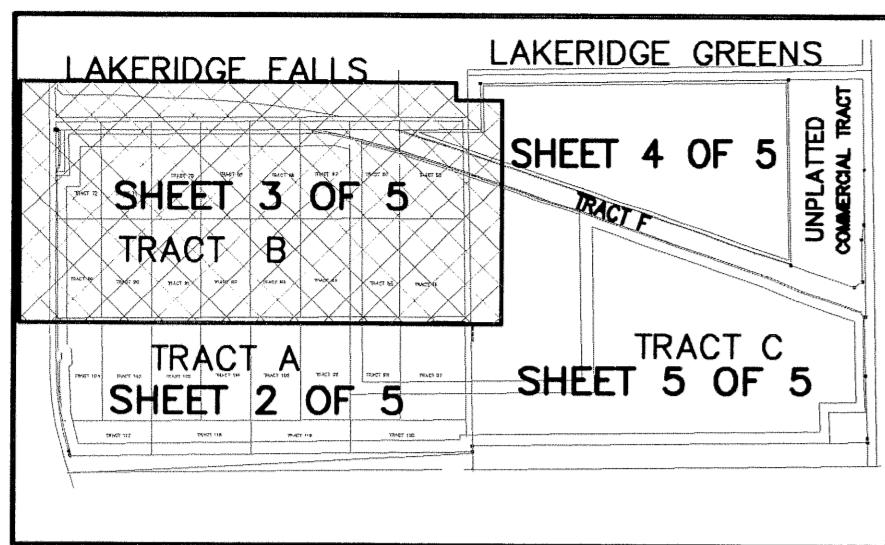


# WINSBERG WETLAND RESTORATION PROJECT

A REPLAT OF A PORTION OF TRACTS 65 THROUGH 72, 89 THROUGH 96, 97 THROUGH 104, AND 117 THROUGH 120, BLOCK 64, IN SECTION 4, TOWNSHIP 46 SOUTH, RANGE 42 EAST, PALM BEACH FARMS COMPANY PLAT No.3, RECORDED IN PLAT BOOK 2, PAGE 45 OF THE PUBLIC RECORDS OF PALM BEACH COUNTY, FLORIDA, AND A PORTION OF THE SOUTHWEST QUARTER OF SECTION 3, TOWNSHIP 46 SOUTH, RANGE 42 EAST, PALM BEACH COUNTY, FLORIDA

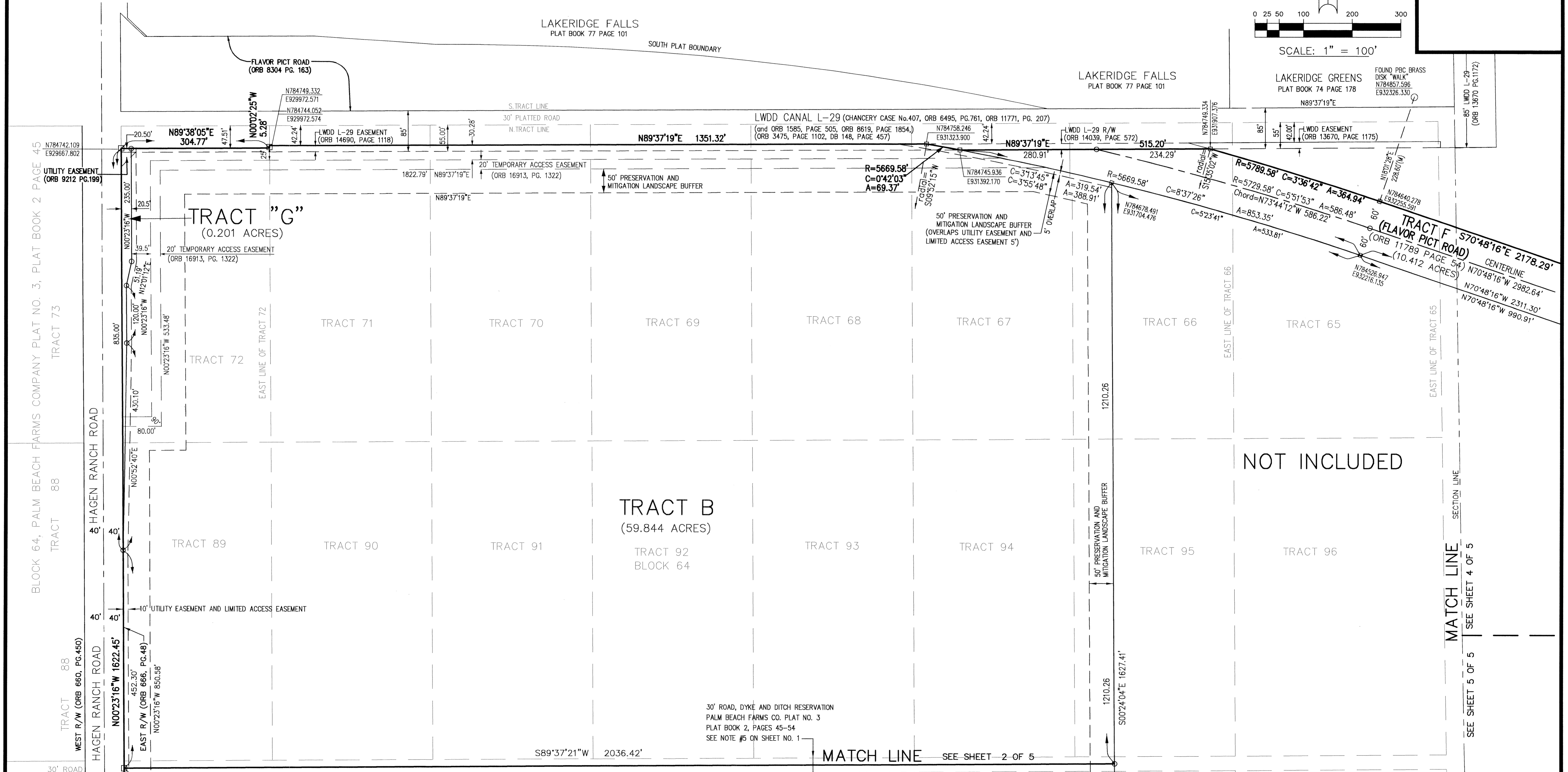
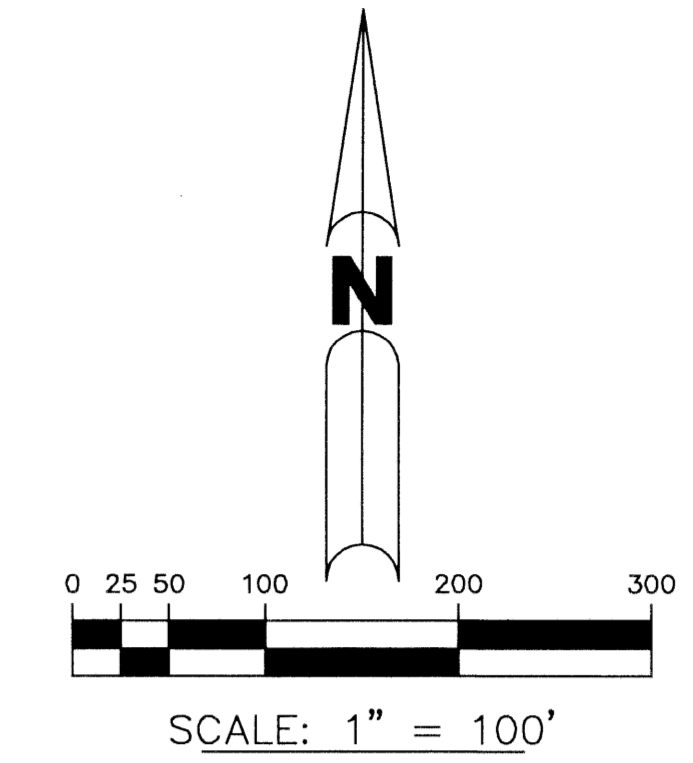
95



KEY MAP  
N.T.S.

MAY 2004

SHEET 3 OF 5



SUBDIVISION Winsberg Wetland Restoration Project  
 BOOK 102 PAGE 95  
 BLOCK 64 ZONING RT/SE  
 QUAD 51 ZIF CODE 50157  
 SEE D90.1300  
 TRACT 96.4  
 PUD NAME

**B BROWN & PHILLIPS, INC.**  
 PROFESSIONAL SURVEYING SERVICES  
 CERTIFICATE OF AUTHORIZATION # LB 6473  
 3969 N. HAVERHILL RD. SUITE 105, WEST PALM BEACH, FLORIDA 33417 561-615-3988, 615-3986 FAX

THIS INSTRUMENT PREPARED BY:  
 JOHN E. PHILLIPS, III  
 PROFESSIONAL SURVEYOR AND MAPPER  
 STATE OF FLORIDA No.4826

**WINSBERG WETLAND RESTORATION PROJECT**

DRAWN: MDB	PROJ. NO. 04-033P
CHECKED: JEPHII	SCALE: 1"=100'
FIELD BOOK:	DATE: 5/17/04
PAGES:	SHEET 3 OF 5