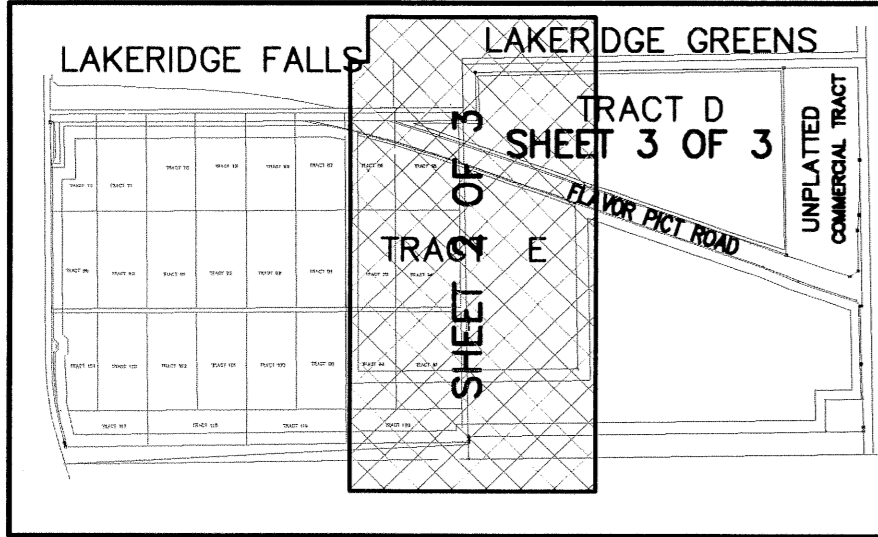


99

WINSBERG FARMS P.U.D.

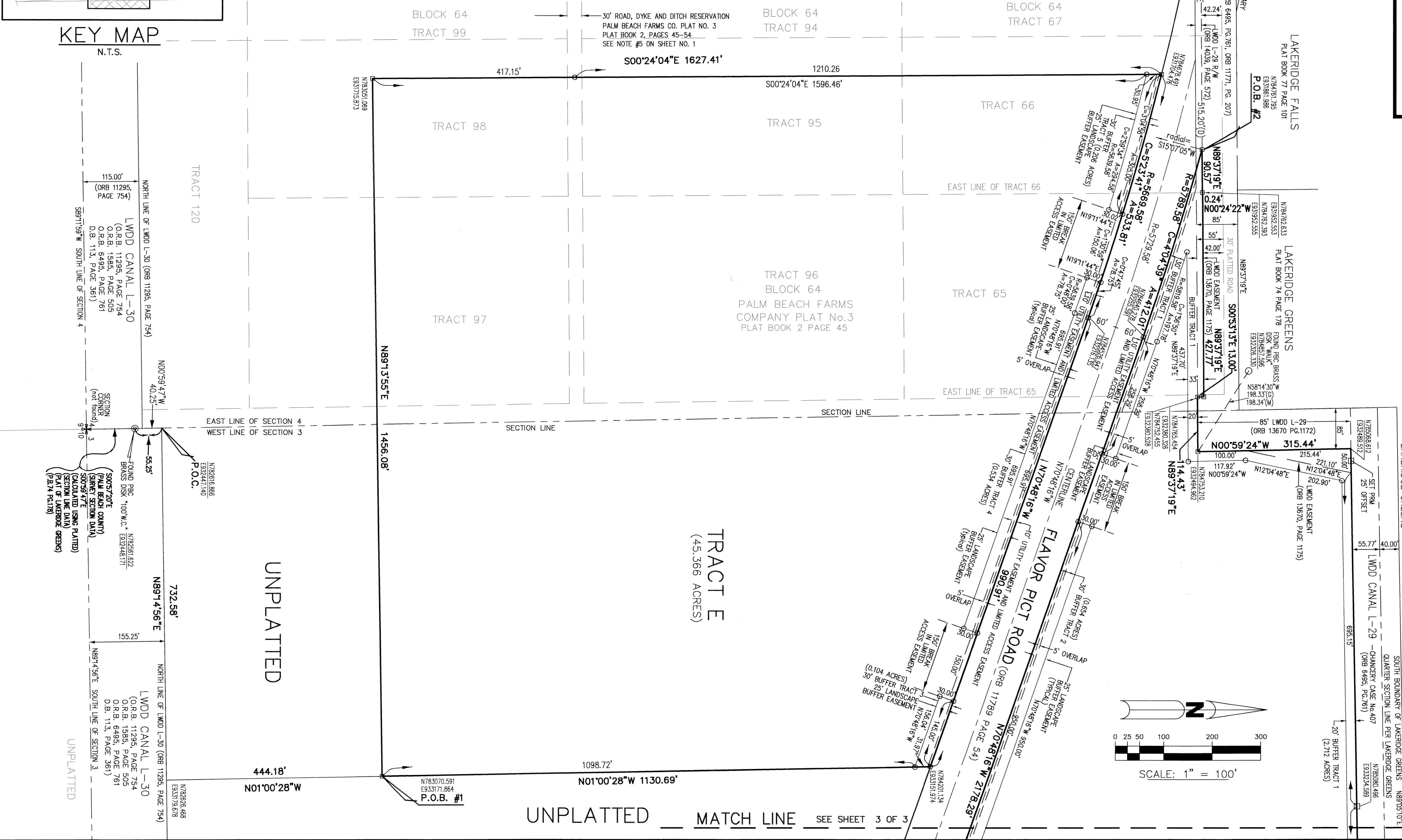
A REPLAT OF A PORTION OF TRACTS 65 AND 66, AND 95 THROUGH 98, BLOCK 64, IN SECTION 4, TOWNSHIP 46 SOUTH, RANGE 42 EAST, PALM BEACH FARMS COMPANY PLAT No.3, RECORDED IN PLAT BOOK 2, PAGE 45 OF THE PUBLIC RECORDS OF PALM BEACH COUNTY, FLORIDA, AND A PORTION OF THE SOUTHWEST QUARTER OF SECTION 3, TOWNSHIP 46 SOUTH, RANGE 42 EAST, PALM BEACH COUNTY, FLORIDA
MAY 2004

SHEET 2 OF 3



KEY MAP

N.T.S.



SUBDIVISION WINSBERG FARMS P.U.D.
BOOK 102
PAGE 4
FLOOD ZONE 15
ZONING RT 5
SR 15
ZIP CODE 33471
TAX 290.00
PUD NAME

BROWN & PHILLIPS, INC.

PROFESSIONAL SURVEYING SERVICES
CERTIFICATE OF AUTHORIZATION # LB 6473
3969 N. HAVERHILL RD. SUITE 105, WEST PALM BEACH, FLORIDA 33417 561-615-3988, 615-3986 FAX

THIS INSTRUMENT PREPARED BY:
JOHN E. PHILLIPS, III
PROFESSIONAL SURVEYOR AND MAPPER
STATE OF FLORIDA No.4826

WINSBERG FARMS P.U.D.

DRAWN: MDB	PROJ. NO. 04-033W
CHECKED: JEPHII	SCALE: 1"=100'
FIELD BOOK:	DATE: 5/18/04
PAGES:	SHEET 2 OF 3