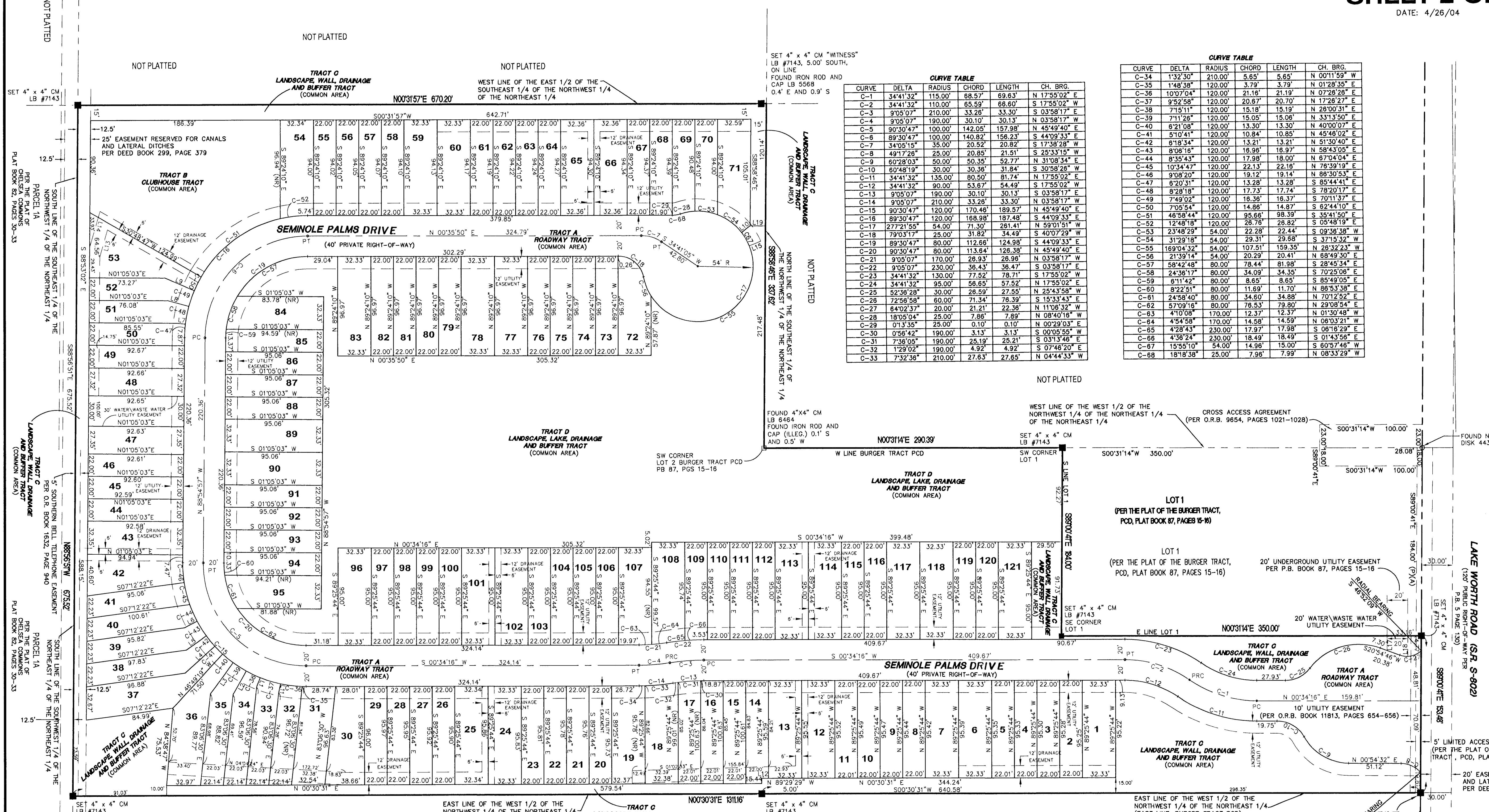


SEMINOLE PALMS

A REPLAT OF LOT 2 OF THE BURGER TRACT, PCD, PLAT BOOK 87, PAGES 15-16, AND A PORTION OF LAND LYING WITHIN SECTION 27, TOWNSHIP 44 SOUTH-RANGE 42 EAST CITY OF GREENACRES, PALM BEACH COUNTY, FLORIDA

SHEET 2 OF 2
DATE: 4/26/04

COUNTY OF PALM BEACH)
STATE OF FLORIDA) SS
This Plot was filed for record on
this day of June, 2004
and duly recorded in Plat Book 103-104
on Page 103-104
DOROTHY WILKENS
Clerk of the Circuit Court
Dorothy Wilkens



CURVE TABLE

CURVE	DELTA	RADIUS	CHORD	LENGTH	CH. BRG.
C-1	34°41'32"	115.00'	88.57'	69.63'	N 17°55'02" E
C-2	34°41'32"	110.00'	65.59'	66.60'	S 17°55'02" W
C-3	9°05'07"	210.00'	33.26'	33.50'	S 03°58'17" E
C-4	9°05'07"	190.00'	30.10'	30.13'	N 03°58'17" W
C-5	9°05'07"	100.00'	142.05'	157.98'	N 45°49'40" E
C-6	89°30'47"	100.00'	140.82'	156.23'	S 44°09'33" E
C-7	34°05'15"	35.00'	20.52'	20.82'	S 17°38'28" W
C-8	49°17'26"	25.00'	20.85'	21.51'	S 25°33'15" W
C-9	60°28'03"	50.00'	50.35'	52.77'	N 31°08'34" E
C-10	60°48'19"	30.00'	30.36'	31.84'	S 30°58'28" W
C-11	34°41'32"	135.00'	80.50'	81.74'	N 17°55'02" E
C-12	34°41'32"	90.00'	53.67'	54.49'	S 17°55'02" W
C-13	9°05'07"	190.00'	30.10'	30.13'	S 03°58'17" E
C-14	9°05'07"	210.00'	33.26'	33.30'	N 03°58'17" W
C-15	90°30'47"	120.00'	170.46'	189.57'	N 45°49'40" E
C-16	89°30'47"	120.00'	168.98'	187.48'	S 44°09'33" E
C-17	27°21'55"	54.00'	71.30'	261.41'	N 59°01'51" W
C-18	79°03'17"	25.00'	31.82'	34.49'	S 40°07'29" W
C-19	89°30'47"	80.00'	112.66'	124.98'	S 44°09'33" E
C-20	90°30'47"	80.00'	113.64'	126.38'	N 45°49'40" E
C-21	9°05'07"	170.00'	26.93'	26.98'	N 03°58'17" W
C-22	9°05'07"	230.00'	36.43'	36.47'	S 03°58'17" E
C-23	34°41'32"	130.00'	77.52'	78.71'	S 03°58'17" E
C-24	34°41'32"	90.00'	56.61'	57.82'	N 17°55'02" E
C-25	52°38'28"	30.00'	28.59'	27.55'	N 25°43'58" W
C-26	72°58'58"	60.00'	71.34'	76.39'	S 15°33'43" E
C-27	64°02'37"	20.00'	21.21'	22.38'	N 11°06'32" W
C-28	18°05'04"	25.00'	7.88'	7.89'	N 08°40'16" E
C-29	01°35'35"	25.00'	0.10'	0.10'	N 00°29'03" E
C-30	0°56'42"	190.00'	3.13'	3.13'	S 00°05'55" W
C-31	7°38'05"	190.00'	25.19'	25.21'	S 03°13'46" E
C-32	7°29'02"	190.00'	4.92'	4.92'	S 07°46'20" E
C-33	7°32'38"	210.00'	27.63'	27.65'	N 04°44'33" W

CURVE TABLE

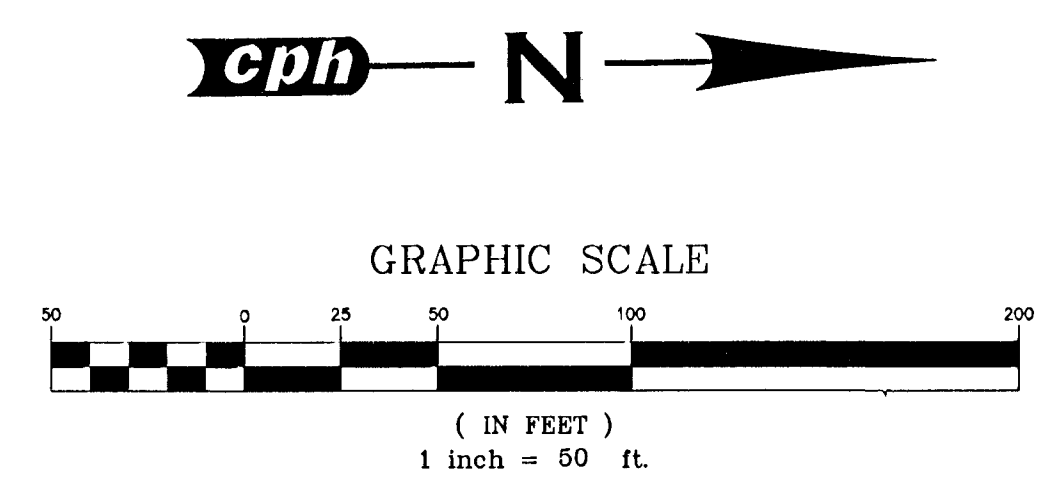
CURVE	DELTA	RADIUS	CHORD	LENGTH	CH. BRG.
C-34	1°32'30"	210.00'	5.65'	5.65'	N 00°11'59" W
C-35	1°48'38"	120.00'	3.79'	3.79'	N 01°28'35" E
C-36	10°07'04"	120.00'	21.16'	21.19'	N 07°28'28" E
C-37	9°52'58"	120.00'	20.87'	20.70'	N 17°28'27" E
C-38	7°51'11"	120.00'	15.18'	15.19'	N 26°00'31" E
C-39	7°11'28"	120.00'	15.05'	15.06'	N 33°13'50" E
C-40	6°21'08"	120.00'	13.30'	13.30'	N 40°00'07" E
C-41	5°10'41"	120.00'	10.84'	10.85'	N 45°48'02" E
C-42	8°18'34"	120.00'	13.21'	13.21'	N 51°30'40" E
C-43	8°08'16"	120.00'	16.98'	16.97'	N 58°43'05" E
C-44	8°35'43"	120.00'	17.98'	17.98'	N 67°04'04" E
C-45	10°34'47"	120.00'	22.13'	22.16'	N 75°39'19" E
C-46	9°08'20"	120.00'	19.12'	19.14'	N 86°30'53" E
C-47	6°20'31"	120.00'	13.28'	13.28'	S 85°44'41" E
C-48	8°28'18"	120.00'	17.73'	17.74'	S 78°20'17" E
C-49	7°49'02"	120.00'	16.36'	16.37'	S 70°11'37" E
C-50	7°39'54"	120.00'	14.86'	14.87'	S 62°44'10" E
C-51	4°58'44"	120.00'	9.66'	9.66'	S 45°41'50" E
C-52	12°48'18"	120.00'	26.78'	26.82'	S 05°48'19" E
C-53	23°48'29"	54.00'	22.28'	22.44'	S 09°36'38" W
C-54	31°29'18"	54.00'	29.31'	29.68'	S 37°15'32" W
C-55	16°04'32"	54.00'	107.51'	159.35'	N 28°32'23" W
C-56	21°39'14"	54.00'	20.29'	20.41'	N 68°48'34" E
C-57	58°24'48"	80.00'	78.44'	81.98'	N 28°45'34" E
C-58	24°36'17"	80.00'	34.09'	34.35'	S 70°25'08" E
C-59	6°11'42"	80.00'	8.65'	8.65'	S 85°49'05" E
C-60	8°22'51"	80.00'	11.69'	11.70'	N 86°53'38" E
C-61	24°58'40"	80.00'	34.60'	34.88'	N 70°12'52" E
C-62	57°09'16"	80.00'	76.53'	79.80'	N 29°08'54" E
C-63	41°00'03"	170.00'	12.37'	12.37'	N 01°30'48" W
C-64	4°58'58"	170.00'	14.58'	14.59'	N 06°03'21" W
C-65	4°28'43"	230.00'	17.97'	17.98'	S 08°18'29" E
C-66	4°36'24"	230.00'	18.49'	18.49'	S 01°43'56" E
C-67	15°55'10"	54.00'	14.96'	15.00'	S 60°57'46" W
C-68	18°18'38"	25.00'	7.96'	7.99'	N 08°33'29" W

- Abbreviation Legend:**
- C/L - CENTERLINE
 - POB - POINT OF BEGINNING
 - POC - POINT OF COMMENCEMENT
 - ORB - OFFICIAL RECORDS BOOK
 - NT - NON-TANGENT
 - PC - POINT OF CURVATURE
 - PCC - POINT OF COMPOUND CURVATURE
 - PT - POINT OF TANGENCY
 - INV. - INVERT
 - C - CHORD
 - CB - CHORD BEARING
 - (C) - CALCULATED
 - (P) - PLAT
 - (A) - ACTUAL
 - (D) - DEED
 - (TYP) - TYPICAL
 - T44S - TOWNSHIP 44 SOUTH
 - R42E - RANGE 42 EAST
 - FDDT - FLORIDA DEPARTMENT OF TRANSPORTATION
 - GOVT - GOVERNMENT
 - DEPT. - DEPARTMENT
 - BLK - BLOCK
 - APPROX - APPROXIMATE
 - W/ - WITH
 - FP&L - FLORIDA POWER AND LIGHT
 - FND - FOUND
 - IR - IRON ROD
 - CONC - CONCRETE
 - IP - IRON PIPE
 - IR&C - IRON REBAR & CAP
 - N&D - NAIL & DISK
 - LB - LICENSED BUSINESS
 - R/W - RIGHT-OF-WAY
 - PG - PAGE
 - PB - PLAT BOOK
 COR - CORNER | POS - PAGES (NR) - NON-RADIAL | |

LINE TABLE

LINE	BEARING	DISTANCE
L1	S 67°57'34" E	9.38'
L2	S 67°21'53" E	26.29'
L3	S 53°10'27" E	37.42'
L4	S 41°38'37" E	38.75'
L5	S 35°20'03" E	23.76'
L6	S 27°13'47" E	13.69'
L7	S 07°25'34" W	7.91'
L8	S 15°53'52" W	21.31'
L9	S 23°42'53" W	31.07'
L10	N 37°31'36" W	10.56'
L11	S 77°30'02" E	8.49'
L12	S 00°30'31" W	6.58'
L13	N 73°20'07" W	27.52'
L14	S 73°20'07" E	36.56'
L15	N 21°04'39" W	12.00'
L16	N 01°01'14" E	14.70'
L17	N 89°29'46" W	14.49'
L18	N 89°29'46" W	20.29'
L19	N 01°01'14" E	15.00'

Notice:
This plat, as recorded in its graphic form, is the official depiction of the subdivided lands described herein and will in no circumstances be supplanted in authority by any other graphic or digital form of the plat. There may be additional restrictions that are not recorded on this plat that may be found in the public records of this county.



THIS INSTRUMENT PREPARED BY:
W. C. ELLIOTT, P.S.M.,
FLORIDA REGISTRATION NO. 5599
C.P.H. ENGINEERS, INC.
500 W. FULTON STREET
SANFORD, FLORIDA 32771
LICENSED BUSINESS NO. 7143

Engineers
Planners
Landscape Architects
Surveyors
Construction Management

1010 - c p h e n g i n e e r s . c o m
500 West Fulton Street, Sanford, FL 32771 P.O. Box 2808, Sanford, FL 32772-2808
Phone 407.322.6841 Fax 407.330.0639