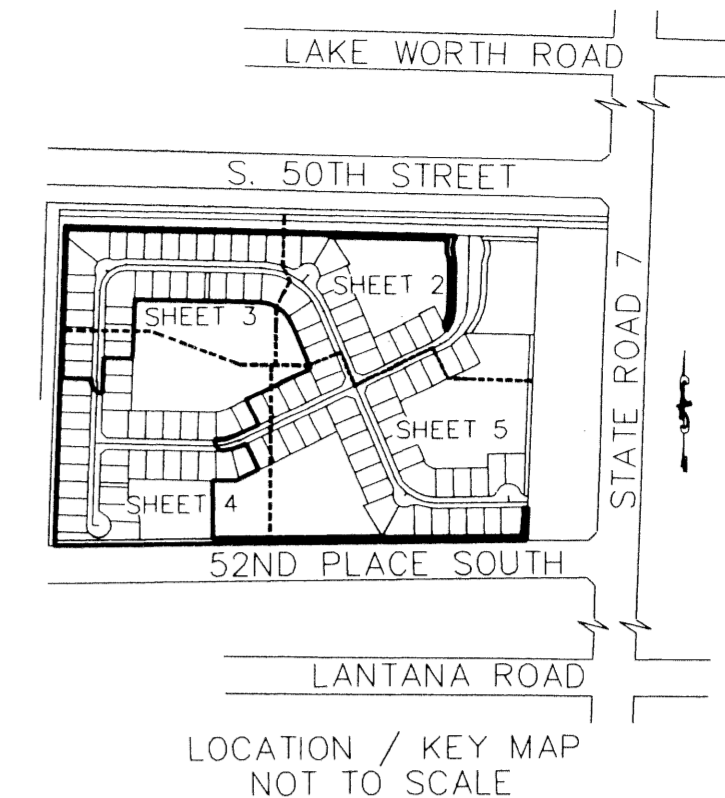
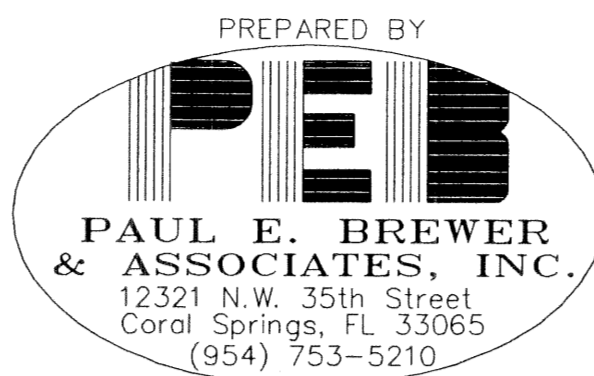


SOUTH ROAD, A P.U.D. PLAT II

A REPLAT OF LOT 5, BLOCK 35, "PALM BEACH FARMS CO. PLAT NO. 3" (PB. 2, PGS. 45-54 P.B.C.R.) IN SECTION 36, TOWNSHIP 44 SOUTH, RANGE 41 EAST AND A REPLAT OF TRACTS B-1, L-1, LOTS 32, 33, 34, 56, 57, 58, 59 AND A PORTION OF TRACT A, SOUTH ROAD, A P.U.D. (PB. 95, PGS. 76-79 P.B.C.R.) PALM BEACH COUNTY, FLORIDA

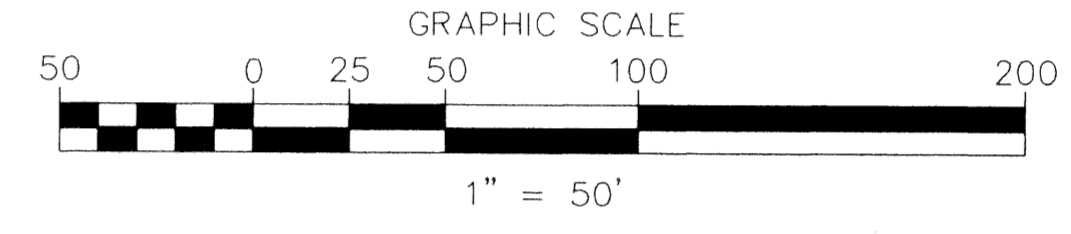
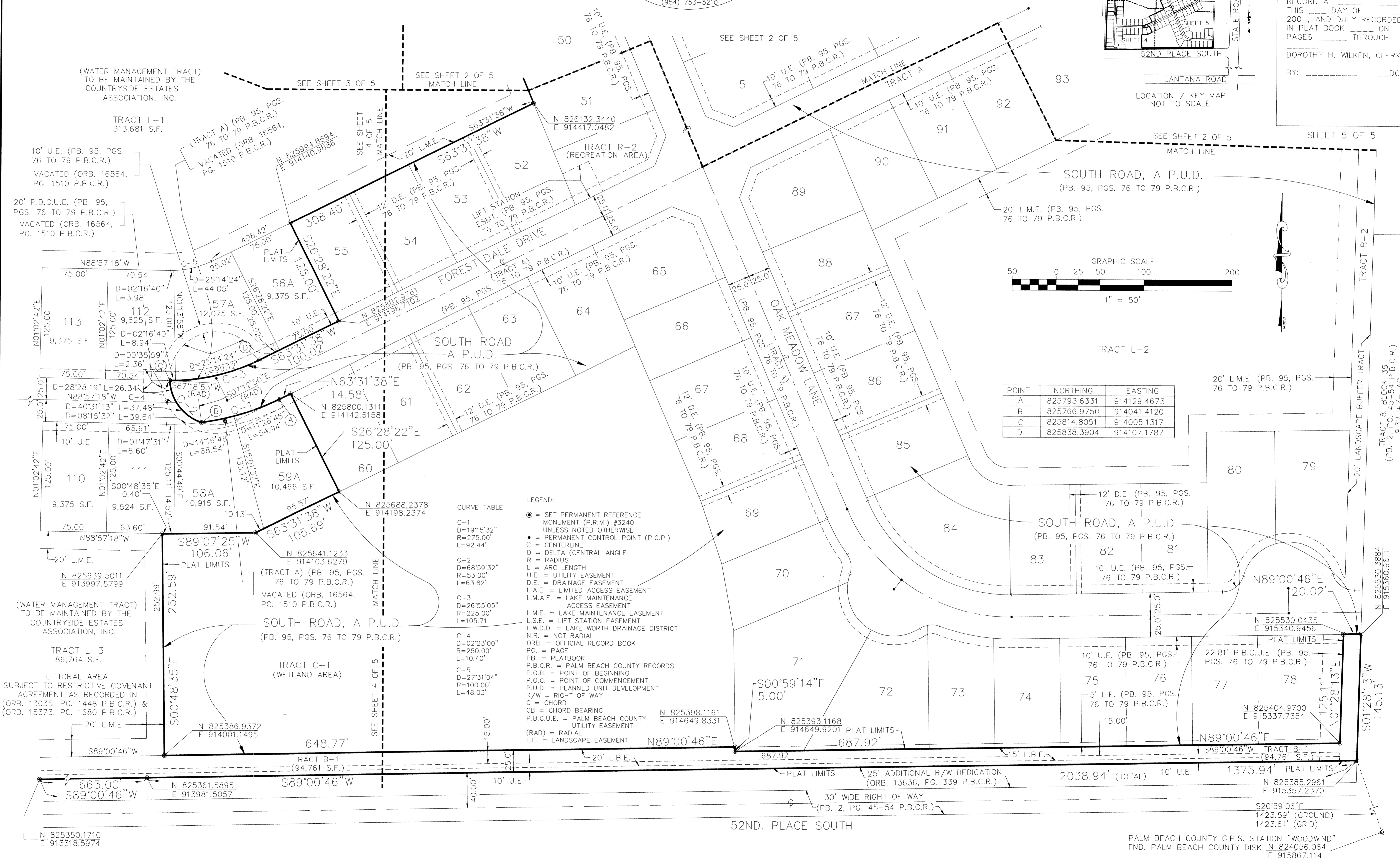


118

STATE OF FLORIDA
COUNTY OF PALM BEACH

THIS PLAT WAS FILED FOR RECORD AT _____ THIS ____ DAY OF _____ 200____, AND DULY RECORDED IN PLAT BOOK _____ ON PAGES _____ THROUGH _____

DOROTHY H. WILKEN, CLERK
BY: _____ DC



POINT	NORTHING	EASTING
A	825793.6331	914129.4673
B	825766.9750	914041.4120
C	825814.8051	914005.1317
D	825838.3904	914107.1787

- CURVE TABLE**
- C-1
D=19'15.32"
R=275.00'
L=92.44'
 - C-2
D=68'59.32"
R=53.00'
L=63.82'
 - C-3
D=26'55.05"
R=225.00'
L=105.71'
 - C-4
D=02'23.00"
R=250.00'
L=10.40'
 - C-5
D=27'31.04"
R=100.00'
L=48.03'
- LEGEND:**
- = SET PERMANENT REFERENCE MONUMENT (P.R.M.) #3240 UNLESS NOTED OTHERWISE
 - = PERMANENT CONTROL POINT (P.C.P.)
 - C = CENTERLINE
 - D = DELTA (CENTRAL ANGLE)
 - R = RADIUS
 - L = ARC LENGTH
 - U.E. = UTILITY EASEMENT
 - D.E. = DRAINAGE EASEMENT
 - L.A.E. = LIMITED ACCESS EASEMENT
 - L.M.A.E. = LAKE MAINTENANCE ACCESS EASEMENT
 - L.M.E. = LAKE MAINTENANCE EASEMENT
 - L.S.E. = LIFT STATION EASEMENT
 - L.W.D.D. = LAKE WORTH DRAINAGE DISTRICT
 - N.R. = NOT RADIAL
 - ORB. = OFFICIAL RECORD BOOK
 - PG. = PAGE
 - PB. = PLATBOOK
 - P.B.C.R. = PALM BEACH COUNTY RECORDS
 - P.O.B. = POINT OF BEGINNING
 - P.O.C. = POINT OF COMMENCEMENT
 - P.U.D. = PLANNED UNIT DEVELOPMENT
 - R/W = RIGHT OF WAY
 - C = CHORD
 - CB = CHORD BEARING
 - P.B.C.U.E. = PALM BEACH COUNTY UTILITY EASEMENT
 - (RAD) = RADIAL
 - L.E. = LANDSCAPE EASEMENT

TRACT L-3
86,764 S.F.

LITTORAL AREA SUBJECT TO RESTRICTIVE COVENANT AGREEMENT AS RECORDED IN (ORB. 13035, PG. 1448 P.B.C.R.) & (ORB. 15373, PG. 1680 P.B.C.R.)

20' L.M.E.

S89°00'46"W

N 825350.1710
E 913318.5974

663.00' S89°00'46"W

N 825361.5895
E 913981.5057

S89°00'46"W

40.00'

10' U.E.

25' ADDITIONAL R/W DEDICATION (ORB. 13636, PG. 339 P.B.C.R.)

30' WIDE RIGHT OF WAY (PB. 2, PG. 45-54 P.B.C.R.)

2038.94' (TOTAL)

10' U.E.

1375.94' PLAT LIMITS

N 825385.2961
E 915357.2370

S20°59'06"E
1423.59' (GROUND)
1423.61' (GRID)

52ND. PLACE SOUTH

PALM BEACH COUNTY G.P.S. STATION "WOODWIND"
FND. PALM BEACH COUNTY DISK N 824056.064
E 915867.114

SUBMITTER: South Road PUD Plat II
 BOOK: 102
 PLAT: 1021
 TRACT: 1021
 PAGES: 100-102
 ZONING: PUD
 CHAD: 63
 DATE: 05-14-07
 FILED: 05-14-07