

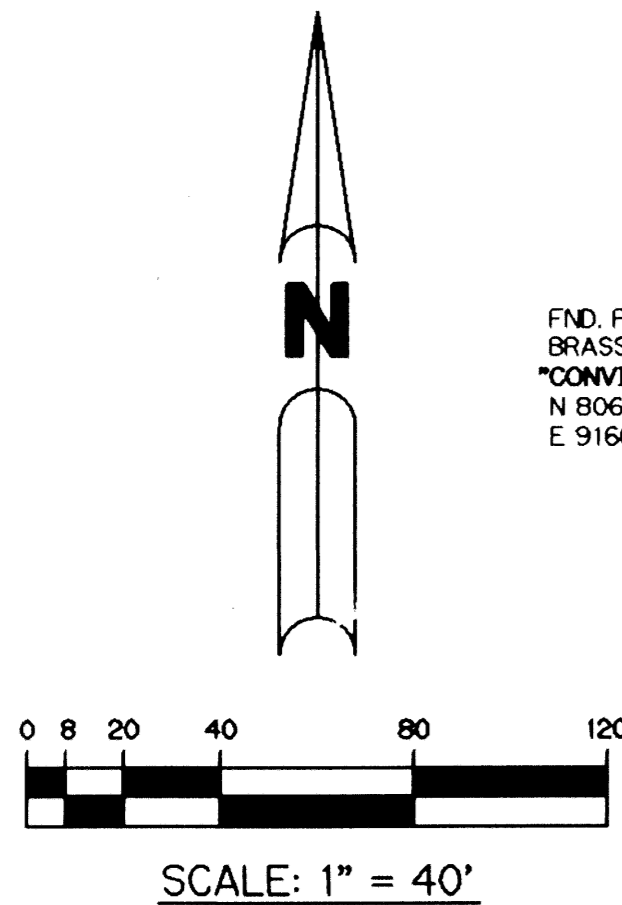
CANYON LAKES (A.K.A. FOGG NORTH) PLANNED UNIT DEVELOPMENT

CANYON LAKES - PLAT THREE

BEING A REPLAT OF A PORTION OF TRACTS 85, 86, 107 THROUGH 110, AND 115 THROUGH 119, AND A PORTION OF A ROAD, DYKE AND DITCH RESERVATION, 30.00 WIDTH IN WIDTH, ALL LYING WITHIN BLOCK 54, PALM BEACH FARMS COMPANY PLAT NO. 3, ACCORDING TO THE PLAT THEREOF, RECORDED IN PLAT BOOK 2, PAGES 45 THROUGH 54 OF THE PUBLIC RECORDS OF PALM BEACH COUNTY, FLORIDA, LYING, SITUATE AND BEING IN SECTIONS 29 AND 32, TOWNSHIP 45 SOUTH, RANGE 42 EAST PALM BEACH COUNTY, FLORIDA

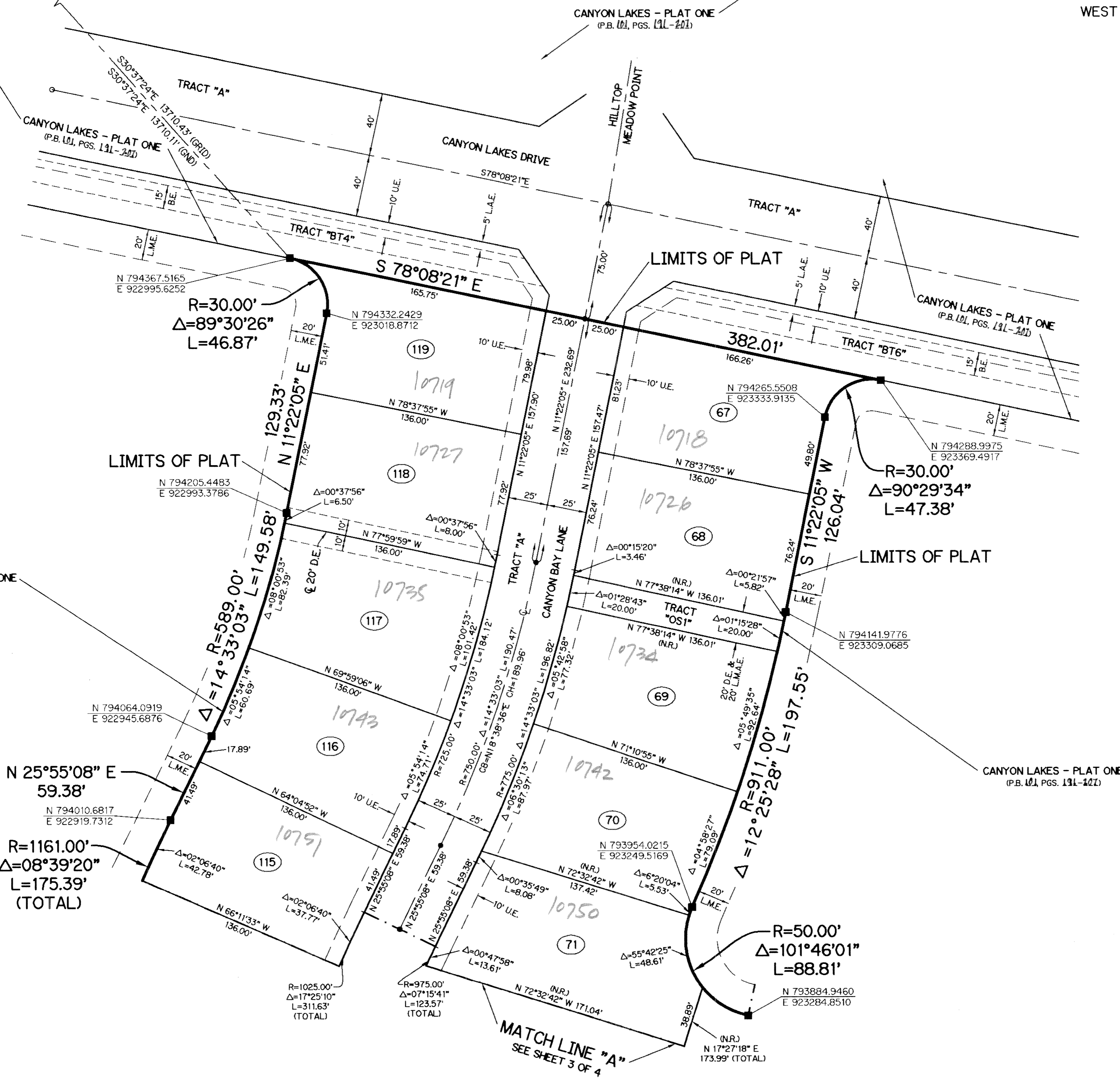
SHEET 2 OF 4 JANUARY, 2004

THIS INSTRUMENT PREPARED BY
PERRY C. WHITE, P.S.M. 4213, STATE OF FLORIDA
LAWSON, NOBLE AND WEBB, INC.
ENGINEERS PLANNERS SURVEYORS
420 COLUMBIA DRIVE
WEST PALM BEACH, FLORIDA 33409
LB-6674



FND. P.B.CO.
BRASS DISK IN CONC.
"CONVICT"
N 806165.8253
E 916011.6621

FND. P.B.CO.
BRASS DISK IN CONC.
"B.F. 50"
N 812197.4000
E 915805.5360



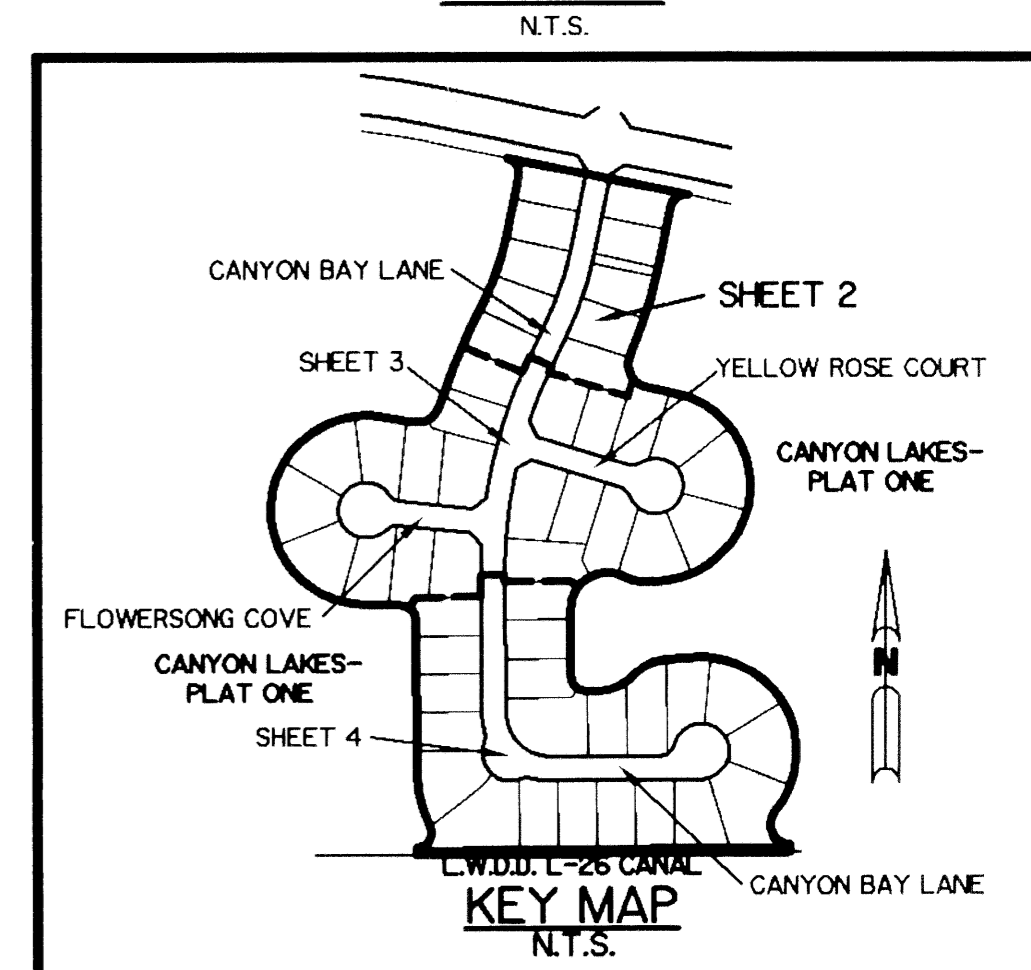
LEGEND:

- - SET PERMANENT REFERENCE MONUMENT, L.B. #6674
 - - FOUND PERMANENT REFERENCE MONUMENT, L.B. #6674
 - - SET PERMANENT CONTROL POINT, L.B. #6674
 - - FOUND PERMANENT CONTROL POINT, L.B. #6674
 - Δ - DELTA ANGLE
 - B.E. - BUFFER EASEMENT
 - CB - CHORD BEARING
 - CH - CHORD DISTANCE
 - CL - CENTERLINE
 - D.B. - DEED BOOK
 - D.E. - DRAINAGE EASEMENT
 - GRD. - GROUND
 - L - ARC LENGTH
 - L.A.E. - LIMITED ACCESS EASEMENT
 - L.M.A.E. - LAKE MAINTENANCE ACCESS EASEMENT
 - L.M.E. - LAKE MAINTENANCE EASEMENT
 - L.W.D.D. - LAKE WORTH DRAINAGE DISTRICT
 - NR. - NOT RADIAL
 - N.T.S. - NOT TO SCALE
 - O.R.B. - OFFICIAL RECORD BOOK
 - P.B. - PLAT BOOK
 - P.C. - POINT OF CURVATURE
 - P.C.P. - PERMANENT CONTROL POINT
 - PGS. - PAGES
 - P.O.B. - POINT OF BEGINNING
 - P.O.C. - POINT OF COMMENCEMENT
 - P.S.M. - PROFESSIONAL SURVEYOR AND MAPPER
 - P.T. - POINT OF TANGENCY
 - R - RADIUS
 - RAD. - RADIAL
 - R/W - RIGHT-OF-WAY
 - TYP. - TYPICAL
 - U.E. - UTILITY EASEMENT
- N 1000000.0000
E 1000000.0000 - DENOTES STATE PLANE COORDINATES

NOTE:

COORDINATES SHOWN ARE GRID COORDINATES
DATUM = NAD 83 (1990 ADJUSTMENT) AS
READJUSTED BY PALM BEACH COUNTY IN 1998.
ZONE = FLORIDA EAST ZONE
LINEAR UNIT = U.S. SURVEY FEET
COORDINATE SYSTEM = 1983 STATE PLANE
TRANSVERSE MERCATOR PROJECTION
ALL DISTANCES ARE GROUND
SCALE FACTOR = 1.0000227
PLAT BEARING = GRID BEARING
NO ROTATION

KEY MAP



CANYON LAKES PLAT 3
SHEET 120
DATE: 1/15/04
BY: P.C.W.
CHECKED: P.C.W.
SCALE: 1" = 40'
PROJECT: FOGG NORTH