

EQUUS AGR - PUD PHASE TWO

A PLAT OF A PORTION OF SECTIONS 18 AND 19, TOWNSHIP 45 SOUTH, RANGE 42 EAST AND ALSO BEING A REPLAT OF A PORTION OF TRACTS 118, 120, AND ALL OF TRACT 119, BLOCK 45 TOGETHER WITH A PORTION OF THE 50 FOOT RIGHT-OF-WAY SOUTH OF AND ADJACENT TO TRACTS 118 THROUGH 120, INCLUSIVE, BLOCK 45, PALM BEACH FARMS COMPANY PLAT NO. 3, TOGETHER WITH A PORTION OF TRACTS 6, 8, 9, 10, 20, 21, 25, BLOCK 51 AND ALL OF TRACTS 7, 22, 23 AND 24, BLOCK 51, TOGETHER WITH A PORTION OF THE 30 FOOT RIGHT-OF-WAY EAST OF AND ADJACENT TO TRACTS 9 AND 22, BLOCK 51, AND A PORTION OF THE 15 FOOT RIGHT-OF-WAY SOUTH OF AND ADJACENT TO TRACTS 20 THROUGH 25, INCLUSIVE, BLOCK 51, PALM BEACH FARMS COMPANY PLAT NO. 3, ACCORDING TO THE PLAT THEREOF AS RECORDED IN PLAT BOOK 2, PAGE 45 OF THE PUBLIC RECORDS OF PALM BEACH COUNTY, FLORIDA

BLINOW AND ROSSI, INC. BOCA RATON, FLORIDA

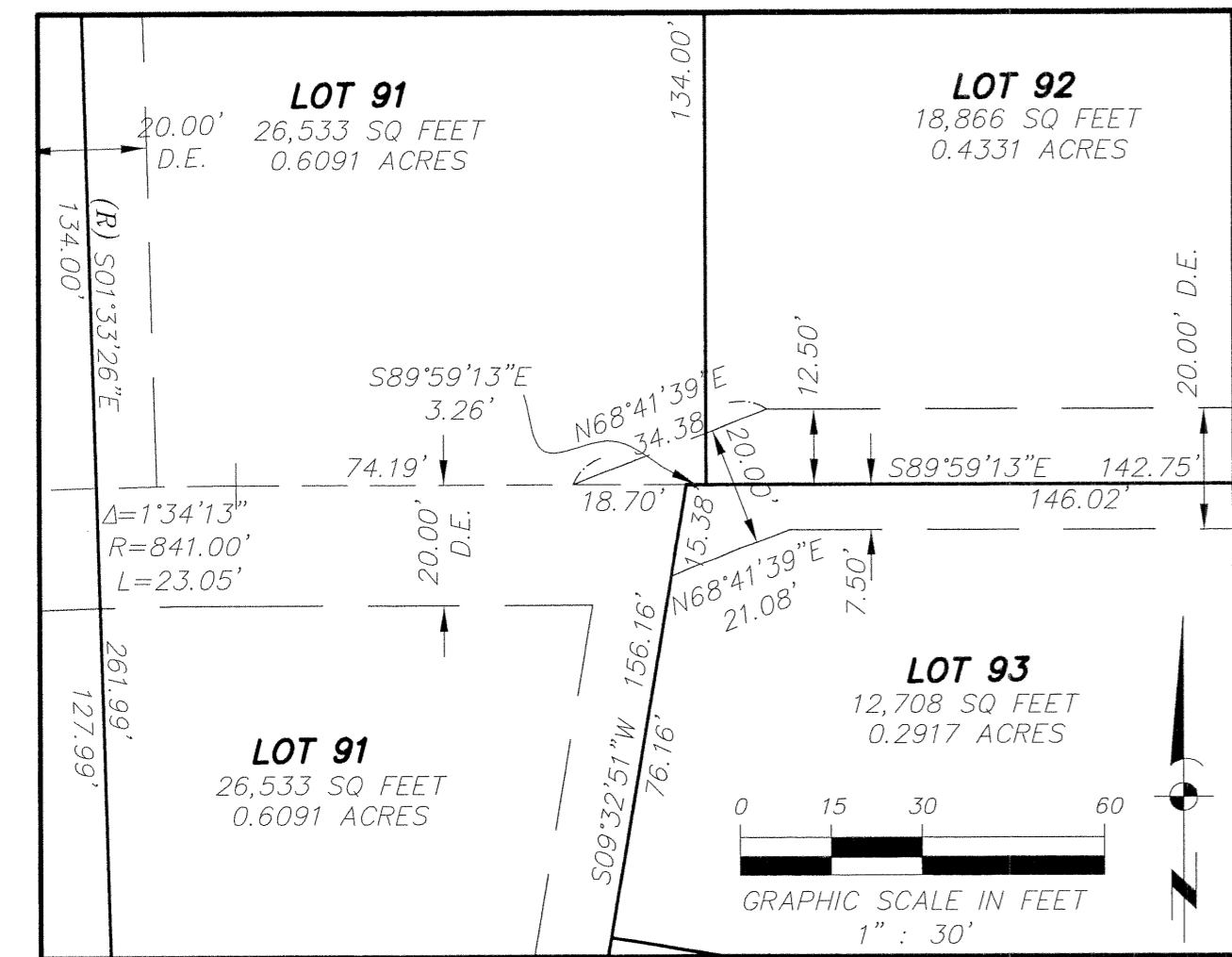
SHEET 4 OF 7
MARCH 2004

STATE OF FLORIDA
COUNTY OF PALM BEACH

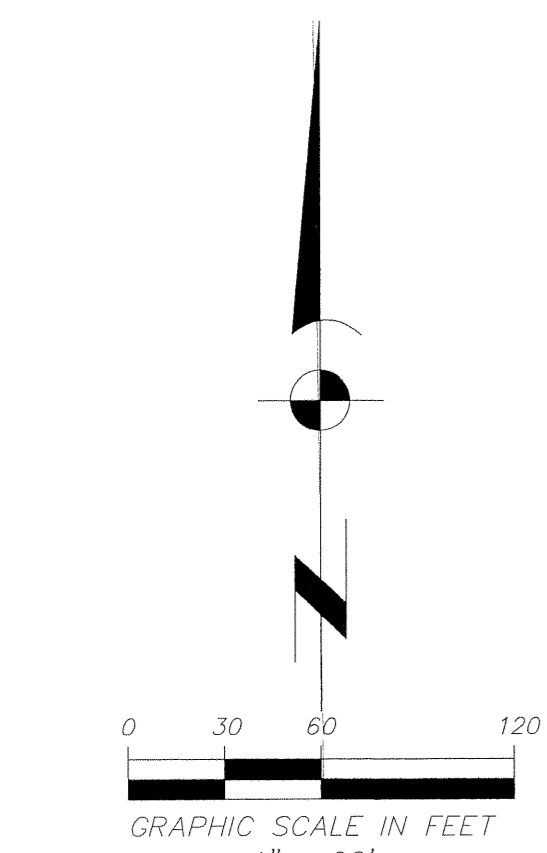
THIS PLAT WAS FILED FOR RECORD AT _____ M. THIS _____ DAY OF _____, A.D. 2004 AND DULY RECORDED IN PLAT BOOK _____ ON PAGES _____ THROUGH _____.

DOROTHY H. WILKEN
CLERK OF COURT

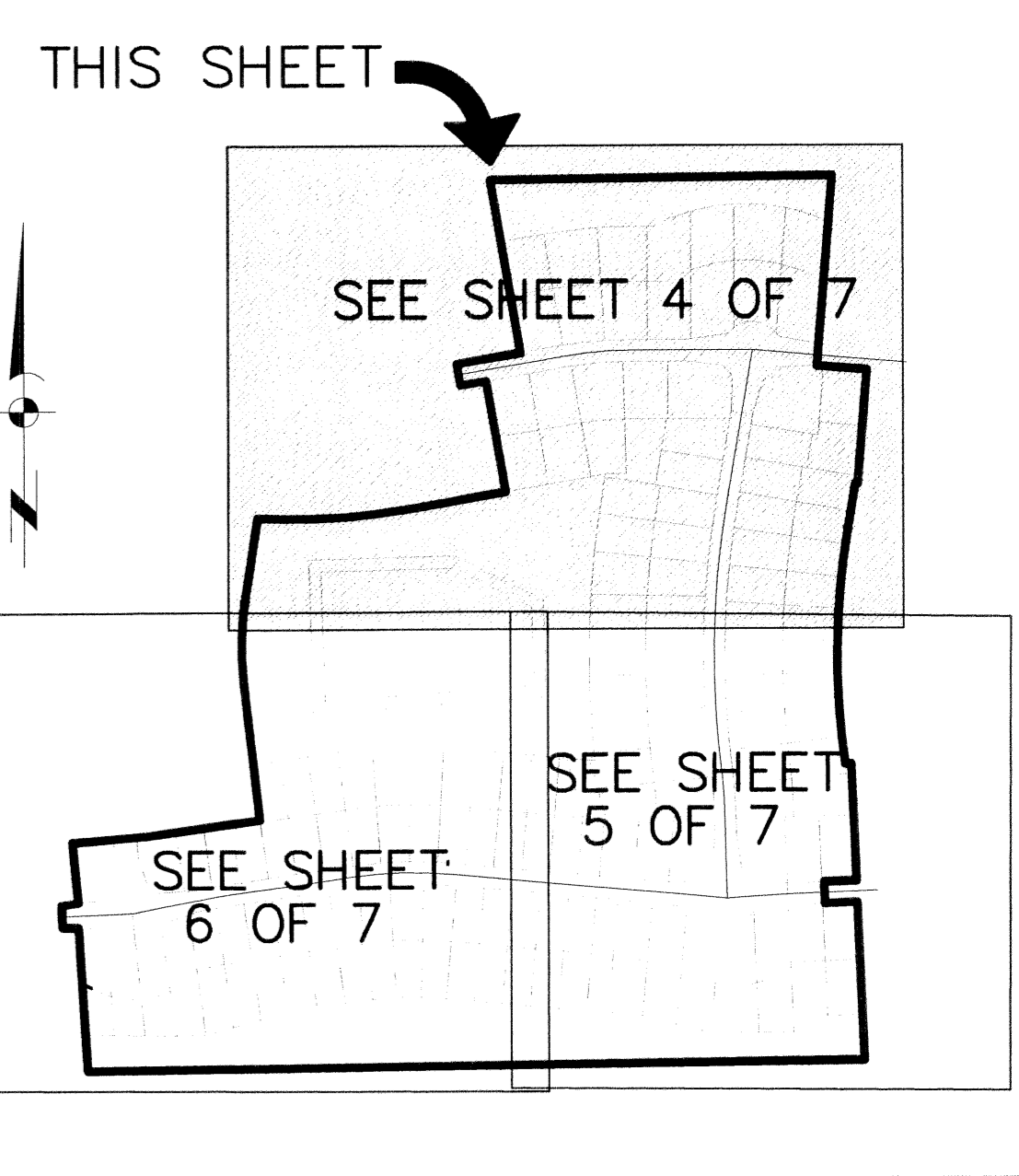
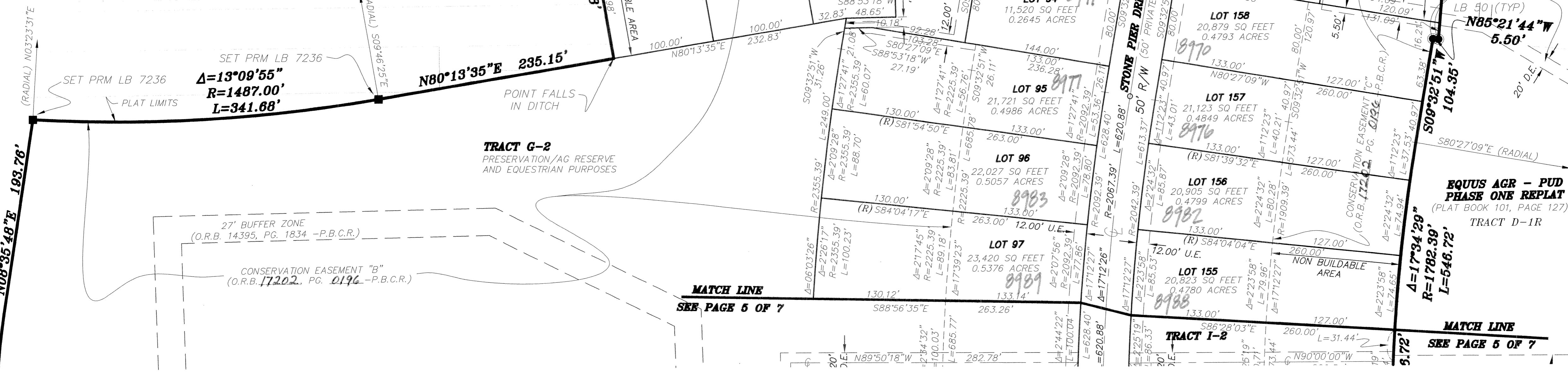
BY: _____
DEPUTY CLERK



DETAIL "A" 1" : 30'



GRAPHIC SCALE IN FEET 1" : 60'



- ABBREVIATION LEGEND**
- AGR AGRICULTURE
 - D.E. DRAINAGE EASEMENT
 - CL CENTERLINE
 - U.E. UTILITY EASEMENT
 - CONC. CONCRETE
 - Δ CENTRAL ANGLE
 - ELEV. ELEVATION
 - FND. FOUND
 - PUD PLAN UNIT DEVELOPED
 - L ARC LENGTH
 - LB LICENSED BUSINESS
 - O.R.B. OFFICIAL RECORDS BOOK
 - (R) RADIAL LINE
 - (P) PLAT
 - P.B. PLAT BOOK
 - P.B.C.R. PALM BEACH COUNTY RECORDS
 - (P.C.P.) PERMANENT CONTROL POINT
 - PAGE
 - PRM PERMANENT REFERENCE MONUMENT
 - P.S.M. PROFESSIONAL SURVEYOR & MAPPER
 - R RADIUS
 - R/W RIGHT-OF-WAY
 - (TYP) TYPICAL
 - L.W.D. LAKE WORTH DRAINAGE DISTRICT
 - O.E. OVERHANG EASEMENT
 - SET PRM. LB. 7236 4"x4"x24" CONCRETE MONUMENT
 - FOUND 6" DIAMETER CONCRETE MONUMENT WITH METAL DISC LB50 (TYP.) (JOHN GRANT)
 - 0" DENOTES ZERO LOT LINE

THIS INSTRUMENT WAS PREPARED BY NICHOLAS W. BLINOW, PSM, FL L55989, IN THE OFFICE OF BLINOW AND ROSSI, INC. PROFESSIONAL LAND SURVEYORS 9181 GLADES RD., SUITE 125 BOCA RATON, FLORIDA, 33434
PHONE NUMBER : (561) 477-9633
FAX NUMBER : (561) 477-9707
LICENSED BUSINESS NUMBER 7236

THIS PLAT, AS RECORDED IN ITS GRAPHIC FORM, IS THE OFFICIAL DEPICTION OF THE SUBDIVIDED LANDS DESCRIBED HEREIN AND WILL IN NO CIRCUMSTANCES BE SUPPLANTED IN AUTHORITY BY ANY OTHER GRAPHIC OR DIGITAL FORM OF THE PLAT. THERE MAY BE ADDITIONAL RESTRICTIONS THAT ARE NOT RECORDED ON THIS PLAT THAT MAY BE FOUND IN THE PUBLIC RECORD OF THIS COUNTY.

PREPARED BY:
Blinow & Rossi, Inc.
Land Surveying, Mapping and Consultant Services
9181 GLADES ROAD, SUITE 125
BOCA RATON, FLORIDA 33434
Telephone No. (561) 477-9633

SUBDIVISION EQUUS AGR - PH 2
PAGE 160
FILED MAR 18 2004
COUNTY OF PALM BEACH
QUAD # 4150
SHEET 4 OF 7
TAX 1028
PUD NAME

MATCH LINE
SEE PAGE 5 OF 7

MATCH LINE
SEE PAGE 5 OF 7