

LAKE WORTH COMMONS M.U.P.D.

A REPLAT OF A PORTION OF TRACT 62 AND THE WEST ONE-HALF OF TRACT 63, BLOCK 24, "PALM BEACH FARMS Co. PLAT No. 3", PLAT BOOK 2, PAGE 47 IN SECTION 29, TOWNSHIP 44 SOUTH, RANGE 42 EAST, PALM BEACH COUNTY, FLORIDA JANUARY 2004 SHEET 2 OF 2 SHEETS

173

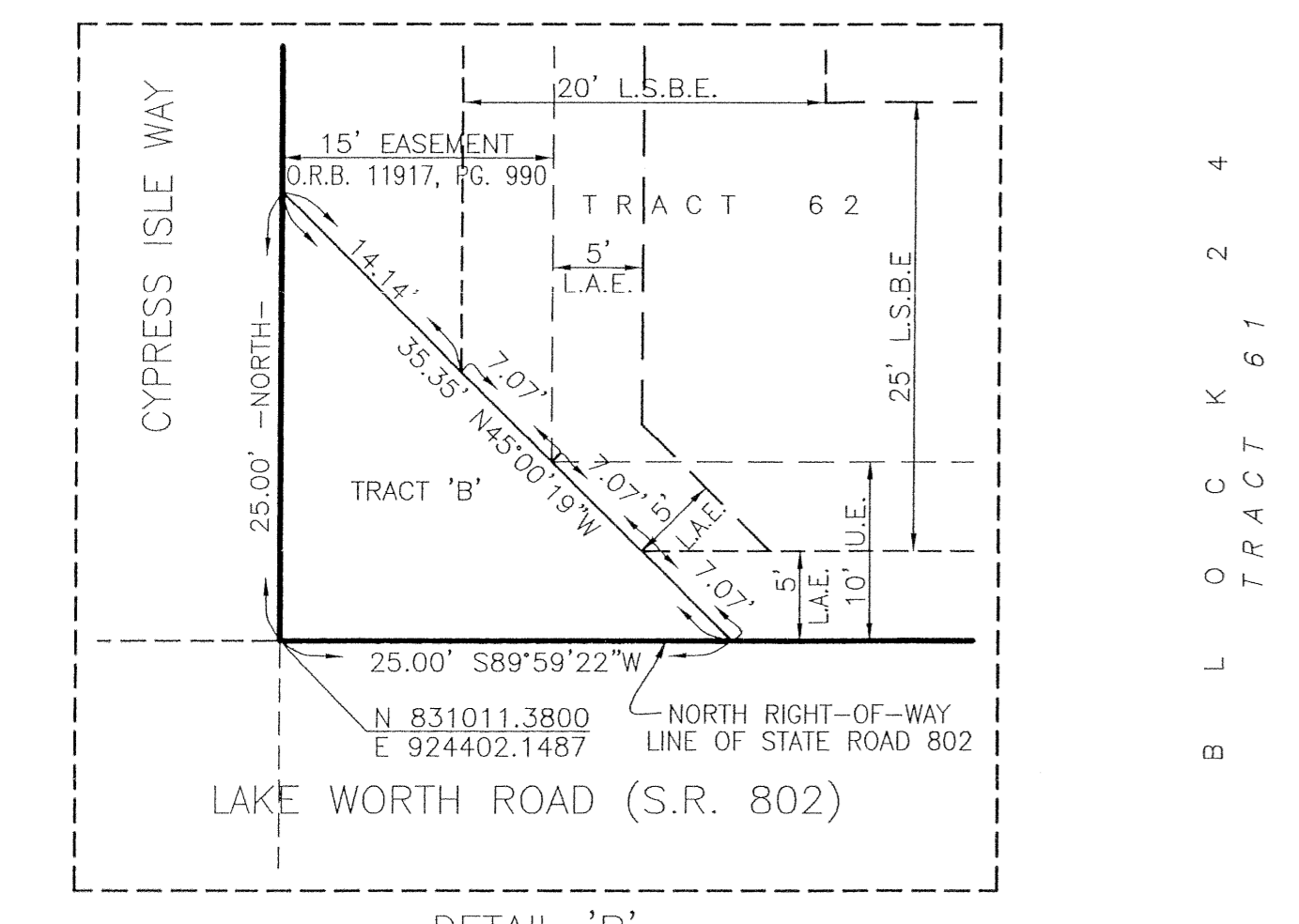
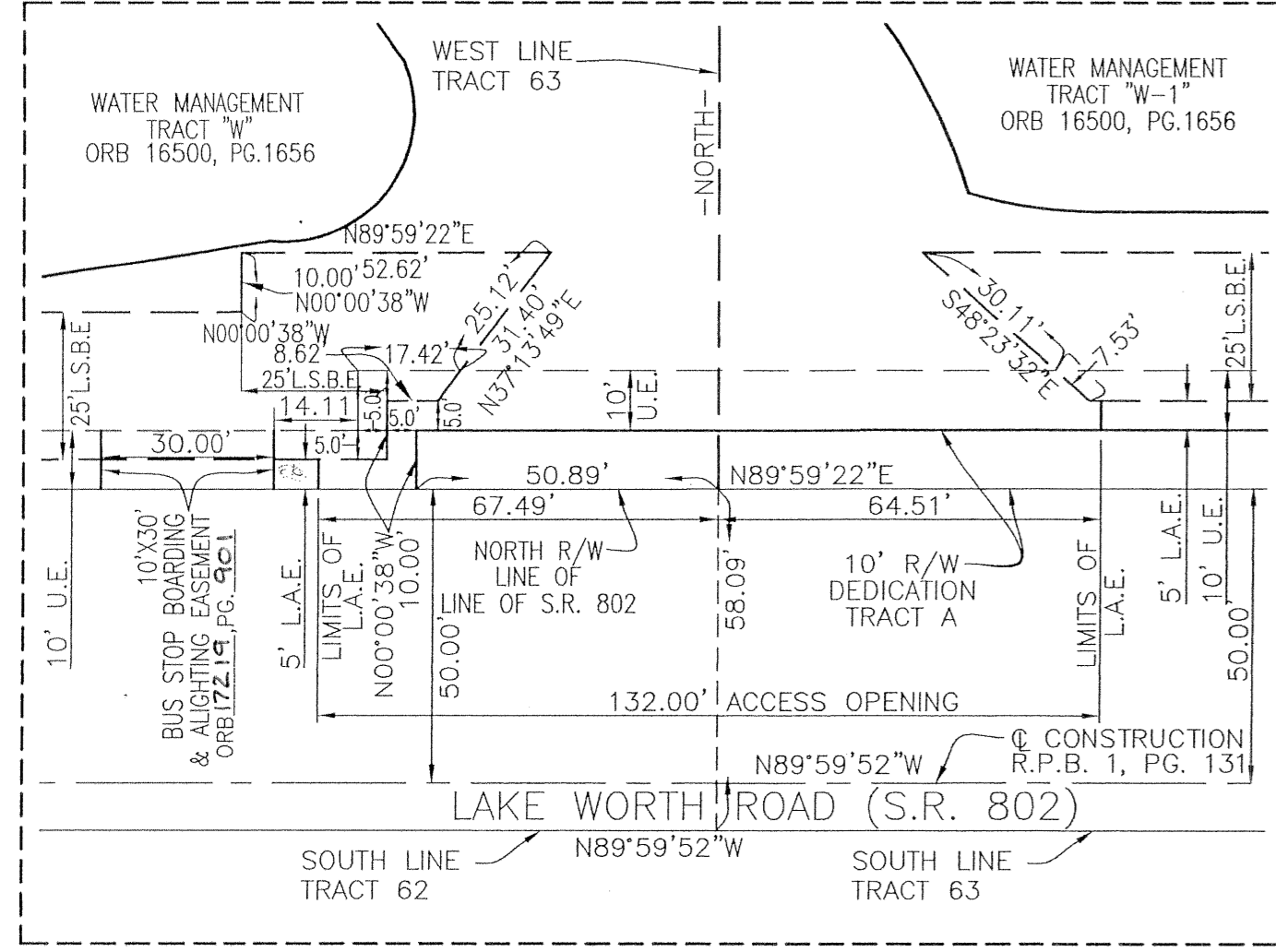
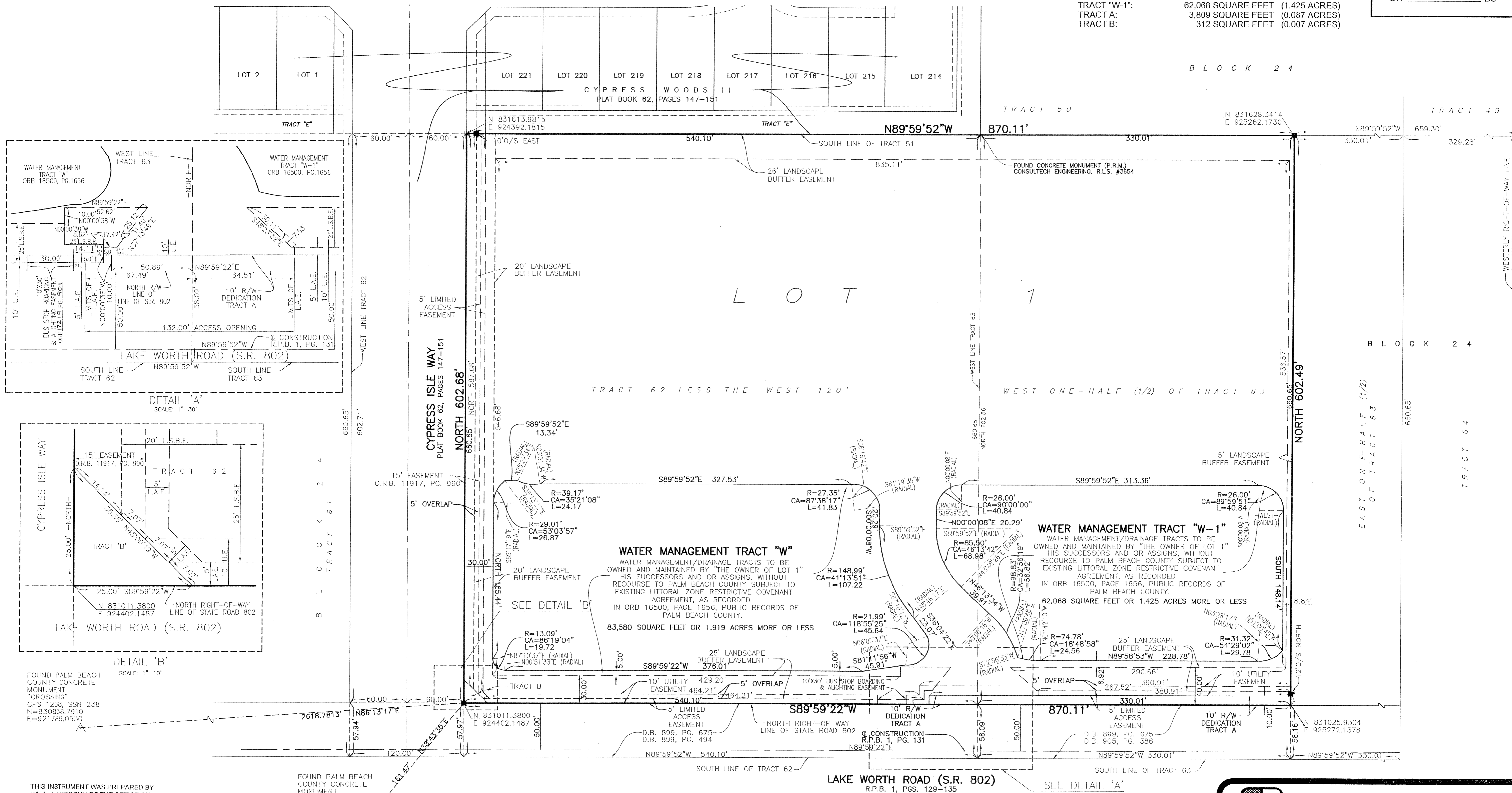
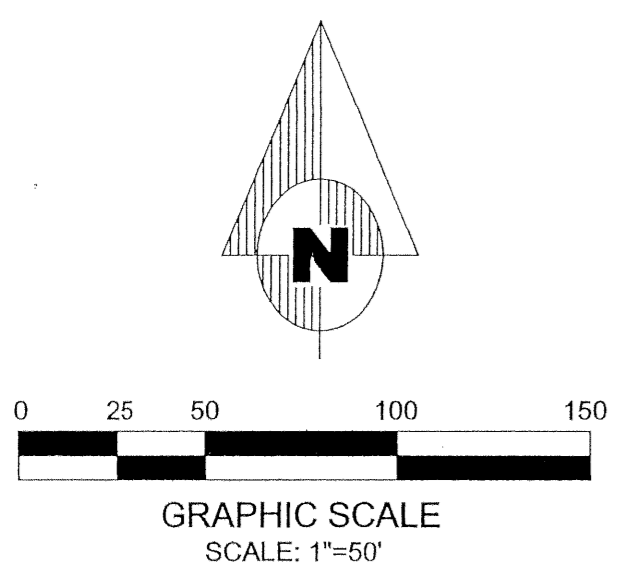
STATE OF FLORIDA
COUNTY OF PALM BEACH } SS

THIS PLAT WAS FILED FOR
RECORD AT _____
THIS _____ DAY OF
_____, A.D., 2004 AND
DULY RECORDED IN PLAT BOOK
_____ ON PAGES _____ AND

DOROTHY H. WILKEN, CLERK
CIRCUIT COURT

BY: _____ DC

PETITION NO. PDD 2002-012
TOTAL SITE ACREAGE: 524,320 SQUARE FEET (12.037 ACRES)
LOT 1: 374,551 SQUARE FEET (8.599 ACRES)
TRACT "W": 83,580 SQUARE FEET (1.919 ACRES)
TRACT "W-1": 62,068 SQUARE FEET (1.425 ACRES)
TRACT A: 3,809 SQUARE FEET (0.087 ACRES)
TRACT B: 312 SQUARE FEET (0.007 ACRES)



FOUND PALM BEACH COUNTY CONCRETE MONUMENT "SUMMER"
GPS 1269, SSN 239
N=830885.4090
E=924301.1320

THIS INSTRUMENT WAS PREPARED BY
PAUL J. FOTORNY OF THE OFFICE OF
DAILEY-FOTORNY, INC.
5050 10TH AVENUE NORTH
SUITE B
LAKE WORTH, FLORIDA 33463

SUBDIVISION LAKE WORTH COMMONS M.U.P.D.
BOOK 102
PAGE 173
FLAG MAP # 170A
ZONING M.U.P.D.
QUAD # 4B
SE
TAZ 739
FUD NAME