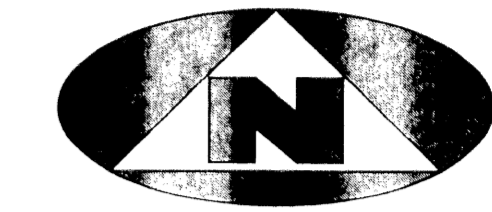


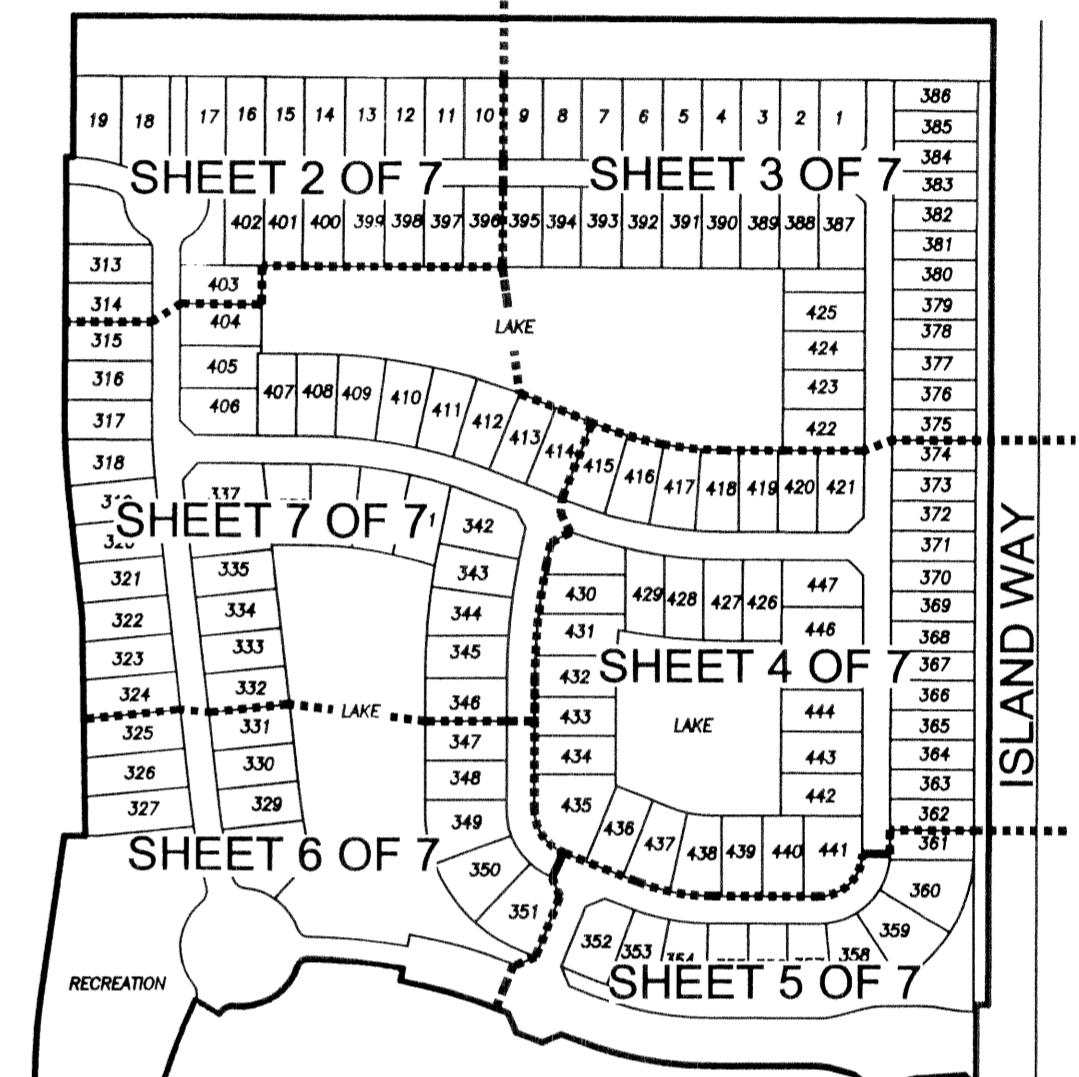
# JUPITER ISLES PLAT 1

177

LYING IN THE NORTHWEST ONE-QUARTER OF SECTION 33, TOWNSHIP 40 SOUTH, RANGE 42 EAST, TOWN OF JUPITER, PALM BEACH COUNTY, FLORIDA.



### SHEET INDEX



### LEGEND

- L.M.A.E. DENOTES LAKE MAINTENANCE ACCESS EASEMENT
- P.B.CO. DENOTES PALM BEACH COUNTY
- (R) DENOTES A RADIAL LINE
- C/L DENOTES A CENTERLINE
- D.E. DENOTES DRAINAGE EASEMENT
- U.E. DENOTES UTILITY EASEMENT
- L.A.E. DENOTES LIMITED ACCESS EASEMENT
- R DENOTES RADIUS DISTANCE
- L DENOTES ARC LENGTH DISTANCE
- CA DENOTES CENTRAL ANGLE
- LCB DENOTES LONG CHORD BEARING
- CHD DENOTES CHORD DISTANCE
- ORB DENOTES OFFICIAL RECORDS BOOK
- SF DENOTES SQUARE FEET
- L.B. DENOTES LICENSING BOARD
- FT. DENOTES FEET
- P.S.M. DENOTES PROFESSIONAL SURVEYOR AND MAPPER
- L.M.E. LAKE MAINTENANCE EASEMENT
- NORTHING STATE PLANE COORDINATE BASED ON N.A.D. 83 ADJUSTMENT
- EASTING STATE PLANE COORDINATE BASED ON N.A.D. 83 ADJUSTMENT
- DENOTES A SET PERMANENT REFERENCE MONUMENT (L.B. 2171)
- DENOTES A FOUND PERMANENT REFERENCE MONUMENT (L.B. 2171)
- ⊙ DENOTES A SET PERMANENT CONTROL POINT (L.B. 2171)
- ▲ DENOTES A ZERO LOT LINE

### SURVEYOR'S NOTES

1. THE BASE BEARING, AS SHOWN HEREON, IS S89°46'29"E ALONG THE NORTH LINE OF THE NORTHWEST ONE QUARTER OF SECTION 33
2. IN THOSE INSTANCES WHERE UTILITY OR DRAINAGE STRUCTURES ARE CONSTRUCTED IN CONFLICT WITH THE PLATTED PERMANENT CONTROL POINT POSITION STRADDLERS MONUMENTED AS PERMANENT CONTROL POINTS WILL BE SET TO REFERENCE THE PLATTED POSITION.
3. LINES THAT INTERSECT CURVES ARE NOT RADIAL UNLESS OTHERWISE NOTED.
4. THIS INSTRUMENT WAS PREPARED BY WM. R. VAN CAMPEN, P.S.M., NO. 2424, IN AND FOR THE OFFICES OF BENCH MARK LAND SURVEYING & MAPPING, INC., 4152 WEST BLUE HERON BOULEVARD, SUITE 121, RIVIERA BEACH, FLORIDA, 33407

**BENCH MARK** LAND SURVEYING & MAPPING, INC.  
 4152 W. BLUE HERON BOULEVARD • SUITE 121  
 RIVIERA BEACH • FLORIDA 33404  
 PHONE: (561) 848-2102 • L.B. 2171 • FAX: (561) 844-9659  
 EMAIL: bmlsm@aol.com

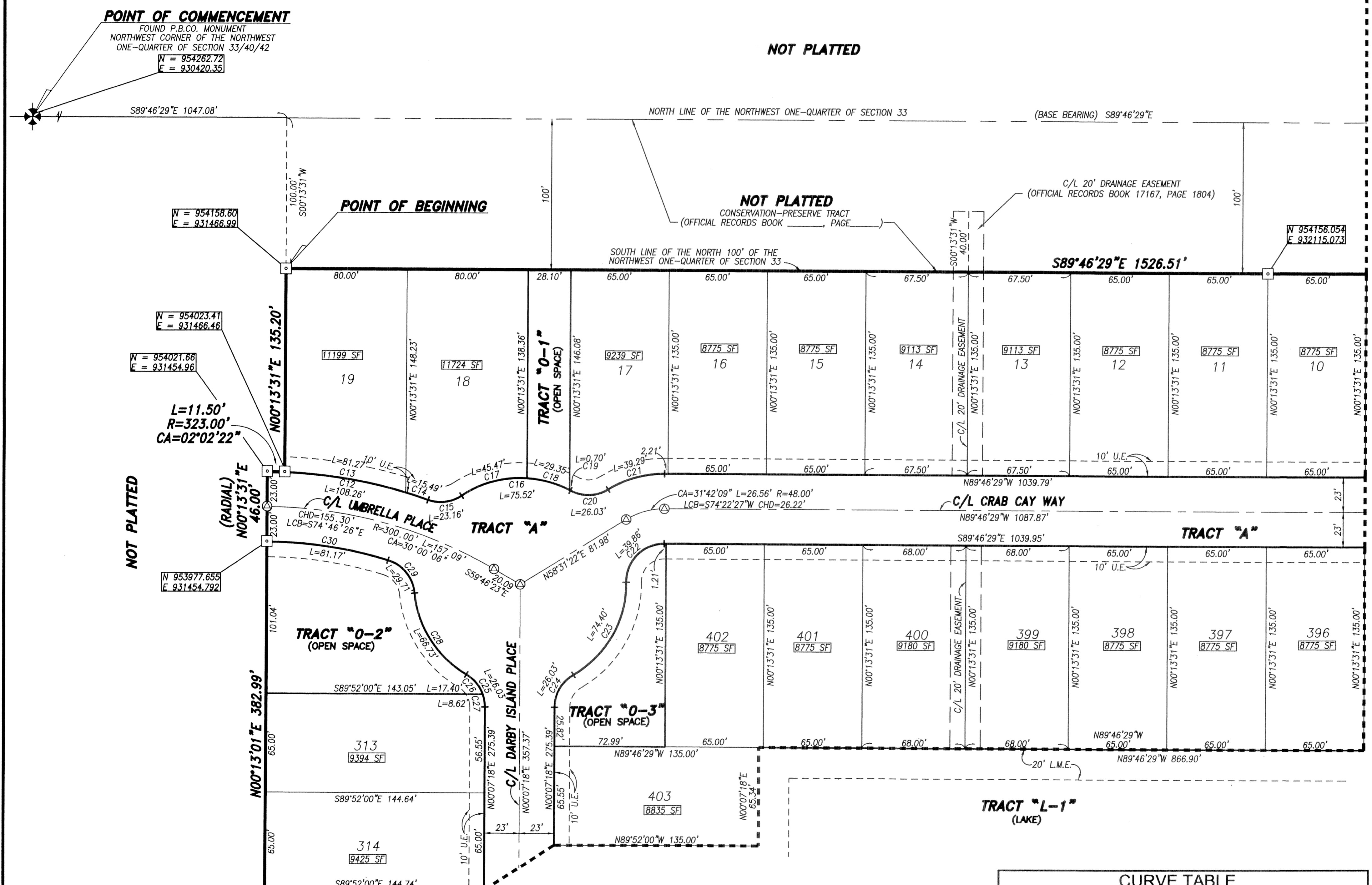
### RECORD PLAT

JUPITER ISLES  
 PLAT 1

DWN: KVC	FB:	DATE: 2/18/04	WO.NO.: P256
CKD:	FILE: PLATPLOT	SCALE: 1"=40'	SHEET 2 OF 7

FOR MATCH SEE SHEET 3 OF 7

FOR MATCH SEE SHEET 7 OF 7



CURVE TABLE					
C12	R=323.00'	CA=19°12'13"	L=108.26'	LCB=N80°10'23"W	CHD=107.75'
C13	R=323.00'	CA=14°24'57"	L=81.27'	LCB=N80°31'39"W	CHD=81.05'
C14	R=323.00'	CA=02°44'54"	L=15.49'	LCB=N71°56'43"W	CHD=15.49'
C15	R=25.00'	CA=53°04'21"	L=23.16'	LCB=N82°53'33"E	CHD=22.34'
C16	R=70.00'	CA=61°49'03"	L=75.52'	LCB=N87°15'55"E	CHD=71.91'
C17	R=70.00'	CA=37°12'54"	L=45.47'	LCB=N74°57'50"E	CHD=44.67'
C18	R=70.00'	CA=24°01'34"	L=29.35'	LCB=N74°24'56"W	CHD=29.14'
C19	R=70.00'	CA=00°34'36"	L=0.70'	LCB=N62°06'51"W	CHD=0.70'
C20	R=25.00'	CA=59°39'04"	L=26.03'	LCB=N88°20'55"E	CHD=24.87'
C21	R=71.00'	CA=31°42'09"	L=39.29'	LCB=N74°22'27"E	CHD=38.79'
C22	R=25.00'	CA=91°21'13"	L=39.86'	LCB=N44°32'55"E	CHD=35.77'
C23	R=70.00'	CA=60°54'04"	L=74.40'	LCB=N29°19'20"E	CHD=70.95'
C24	R=25.00'	CA=59°39'04"	L=26.03'	LCB=N29°56'50"E	CHD=24.87'
C25	R=25.00'	CA=59°39'04"	L=26.03'	LCB=N29°42'14"W	CHD=24.87'
C26	R=25.00'	CA=39°53'04"	L=17.40'	LCB=N39°35'14"W	CHD=17.05'
C27	R=25.00'	CA=19°45'50"	L=8.82'	LCB=N09°45'42"W	CHD=8.58'
C28	R=70.00'	CA=54°37'23"	L=66.73'	LCB=N32°13'05"W	CHD=64.24'
C29	R=25.00'	CA=68°04'45"	L=29.71'	LCB=N38°56'46"W	CHD=27.99'
C30	R=277.00'	CA=16°47'20"	L=81.17'	LCB=N81°22'49"W	CHD=80.88'

