

JUPITER ISLES PLAT 1

LYING IN THE NORTHWEST ONE-QUARTER OF SECTION 33, TOWNSHIP 40 SOUTH, RANGE 42 EAST, TOWN OF JUPITER, PALM BEACH COUNTY, FLORIDA.

179

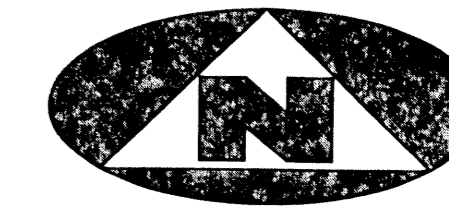
FOR MATCH SEE SHEET 7 OF 7

FOR MATCH SEE SHEET 6 OF 7

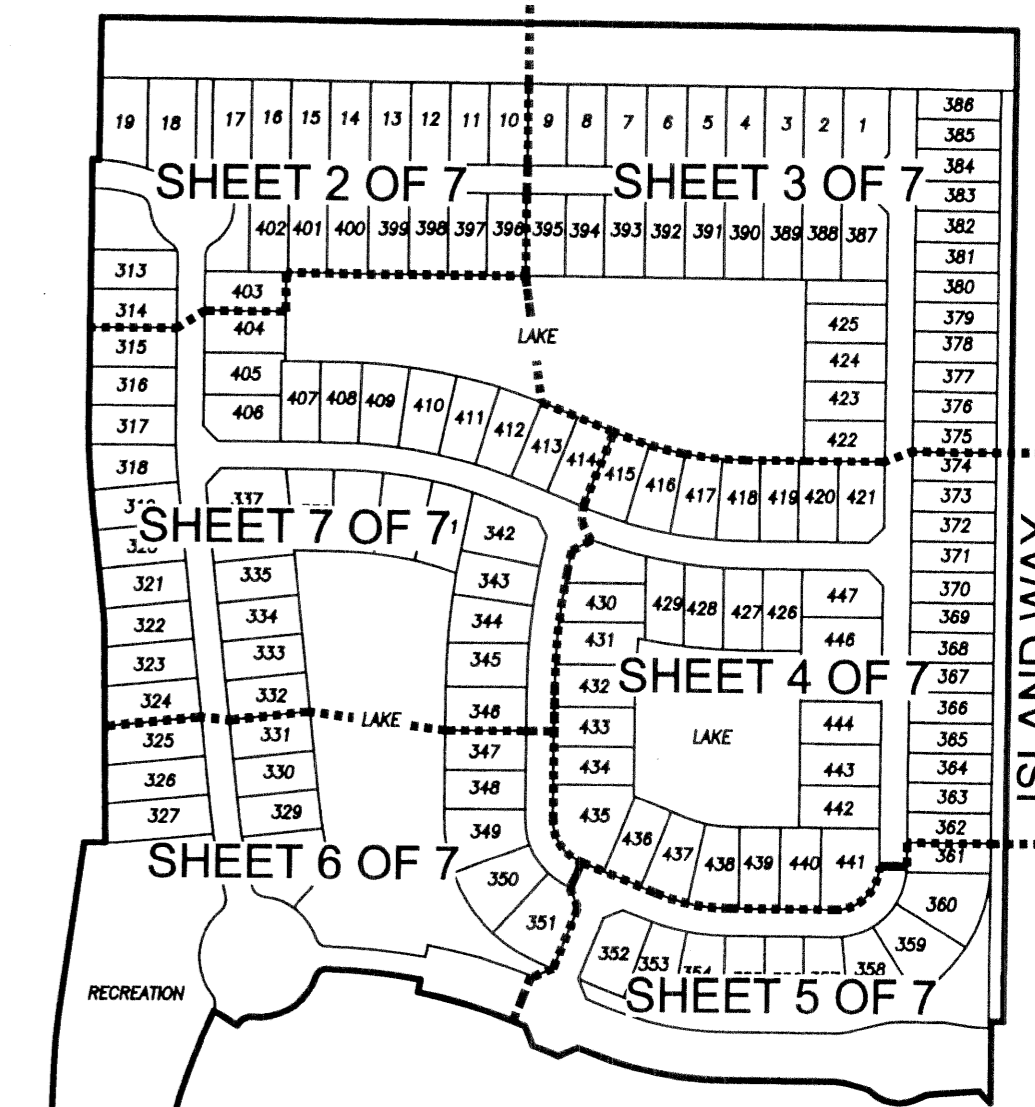
FOR MATCH SEE SHEET 6 OF 7

FOR MATCH SEE SHEET 3 OF 7

FOR MATCH SEE SHEET 5 OF 7



SHEET INDEX

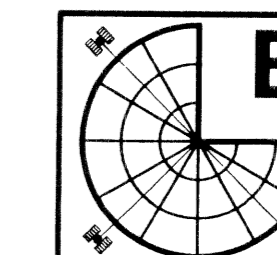


LEGEND

- L.M.A.E. DENOTES LAKE MAINTENANCE ACCESS EASEMENT
- P.B.CO. DENOTES PALM BEACH COUNTY
- (R) DENOTES A RADIAL LINE
- C/L DENOTES A CENTERLINE
- D.E. DENOTES DRAINAGE EASEMENT
- U.E. DENOTES UTILITY EASEMENT
- L.A.E. DENOTES LIMITED ACCESS EASEMENT
- R DENOTES RADIUS DISTANCE
- L DENOTES ARC LENGTH DISTANCE
- CA DENOTES CENTRAL ANGLE
- LCB DENOTES LONG CHORD BEARING
- CHD DENOTES CHORD DISTANCE
- ORB DENOTES OFFICIAL RECORDS BOOK
- SF DENOTES SQUARE FEET
- ITB DENOTES LICENSING BOARD
- FEET DENOTES FEET
- P.S.M. DENOTES PROFESSIONAL SURVEYOR AND MAPPER
- L.M.E. LAKE MAINTENANCE EASEMENT
- N=123456.78 NORTHING STATE PLANE COORDINATE BASED ON N.A.D. 83 ADJUSTMENT
- E=123456.78 EASTING STATE PLANE COORDINATE BASED ON N.A.D. 83 ADJUSTMENT
- DENOTES A SET PERMANENT REFERENCE MONUMENT (L.B. 2171)
- DENOTES A FOUND PERMANENT REFERENCE MONUMENT (L.B. 2171)
- DENOTES A SET PERMANENT CONTROL POINT (L.B. 2171)
- ▲ DENOTES A ZERO LOT LINE

SURVEYOR'S NOTES

1. THE BEARING, AS SHOWN HEREON, IS S89°46'29"E ALONG THE NORTH LINE OF THE NORTHWEST ONE QUARTER OF SECTION 33
2. IN THOSE INSTANCES WHERE UTILITY OR DRAINAGE STRUCTURES ARE CONSTRUCTED IN CONFLICT WITH THE PLATTED PERMANENT CONTROL POINT POSITION STRADDLERS MONUMENTED AS PERMANENT CONTROL POINTS WILL BE SET TO REFERENCE THE PLATTED POSITION
3. LINES THAT INTERSECT CURVES ARE NOT RADIAL UNLESS OTHERWISE NOTED
4. THIS INSTRUMENT WAS PREPARED BY WM. R. VAN CAMPEN, P.S.M. NO. 2424, IN AND FOR THE OFFICES OF BENCH MARK LAND SURVEYING & MAPPING, INC., 4152 WEST BLUE HERON BOULEVARD, SUITE 121, RIVIERA BEACH, FLORIDA, 33407

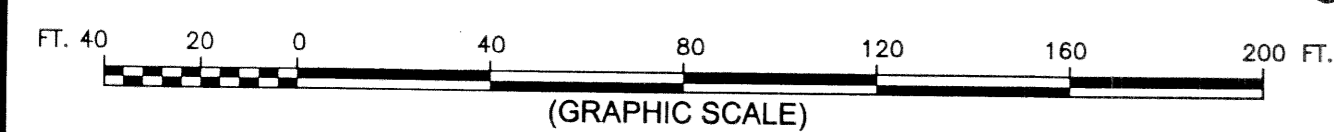


BENCH MARK LAND SURVEYING & MAPPING, INC.
 4152 W. BLUE HERON BOULEVARD • SUITE 121
 RIVIERA BEACH • FLORIDA 33404
 PHONE: (561) 848-2102 • L.B. 2171 • FAX: (561) 844-9659
 EMAIL: bmlsm@aol.com

RECORD PLAT

JUPITER ISLES PLAT 1

DWN: KVC	FB:	DATE: 2/18/04	WO.NO.: P256
CKD:	FILE: PLATPLOT	SCALE: 1"=40'	SHEET 4 OF 7



(GRAPHIC SCALE)