

THIS INSTRUMENT PREPARED BY
DAVID P. LINDLEY
OF
CAULFIELD and WHEELER, INC.
SURVEYORS - ENGINEERS - PLANNERS
7301-A WEST PALMETTO PARK ROAD, SUITE 100A
BOCA RATON, FLORIDA 33433 - (561)392-1991
JUNE - 2003

OSPREY PLAT

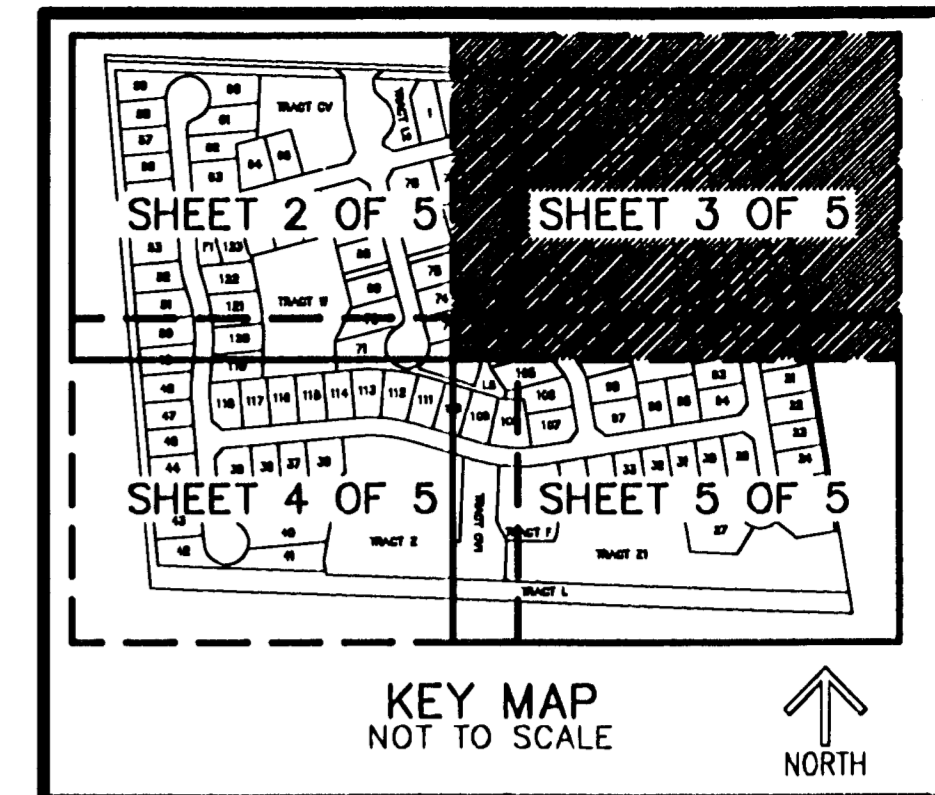
A PLANNED UNIT DEVELOPMENT A PART OF LANTANA ROAD PUD
BEING A REPLAT OF A PORTION OF LOTS 1 AND 2, HIATUS TRACT 42, PALM BEACH FARMS COMPANY PLAT NO. 13
AS RECORDED IN PLAT BOOK 6, PAGES 98 AND 99 OF THE PUBLIC RECORDS OF PALM BEACH COUNTY, FLORIDA,
LYING IN TOWNSHIP 44 1/2 SOUTH, RANGE 42 EAST, PALM BEACH COUNTY, FLORIDA

BLOCK 34
PALM BEACH FARMS COMPANY PLAT NO. 3
(PLAT BOOK 2, PAGES 45-54)

NORTH RIGHT-OF-WAY
(O.R.B. 11368, PAGE 474)

LANTANA ROAD
84' RIGHT-OF-WAY
STATE ROAD PLAT BOOK 2, PAGE 27
(O.R.B. 11368, PAGE 474)

SOUTH RIGHT-OF-WAY
STATE ROAD PLAT BOOK 2, PAGE 27



3

STATE OF FLORIDA
COUNTY OF PALM BEACH
THIS PLAT WAS FILED FOR
RECORD AT _____ M.
THIS _____ DAY OF _____
A.D. 2004 AND DULY RECORDED
IN PLAT BOOK _____ ON
PAGES _____ AND _____

DOROTHY H. MILKEN
CLERK CIRCUIT COURT

BY: _____
DEPUTY CLERK

SHEET 3 OF 5



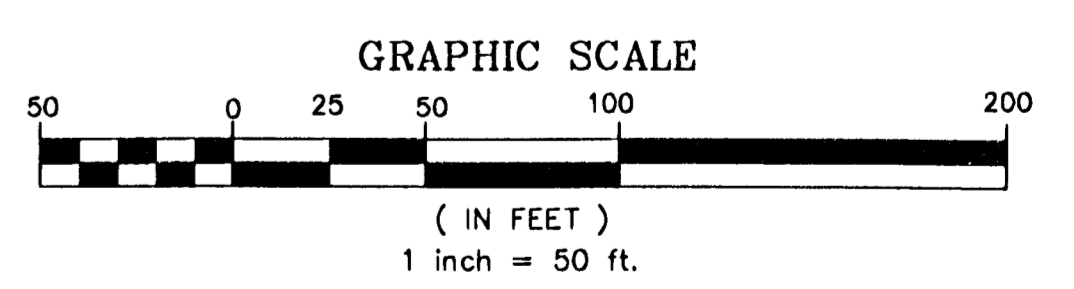
NOTES COORDINATES, BEARINGS AND DISTANCES

COORDINATES SHOWN ARE GRID
DATUM = NAD 83 1990 ADJUSTMENT
ZONE = FLORIDA EAST
LINEAR UNIT = US SURVEY FEET
COORDINATE SYSTEM 1983 STATE PLANE
TRANSVERSE MERCATOR PROJECTION
ALL DISTANCES ARE GROUND
SCALE FACTOR = 1.000201
GROUND DISTANCE X SCALE FACTOR = GRID DISTANCE
BEARINGS AS SHOWN HEREON ARE GRID DATUM, NAD 83 1990
ADJUSTMENT, FLORIDA EAST ZONE.

N04°54'05"W (PLAT BEARING) 00°24'17" = BEARING ROTATION
N05°18'22"W (GRID BEARING) (PLAT TO GRID)
WEST LINE THIS PLAT COUNTERCLOCKWISE

SHERBROOKE GOLF AND COUNTRY CLUB
(PLAT BOOK 69, PAGES 186-192)

CURVE TABLE		
CURVE NO.	CHORD BEARING	CHORD DISTANCE
C1	S08°21'20"E	38.74'
C2	S10°48'12"E	30.85'
C3	S05°30'03"E	155.45'
C4	S00°24'04"W	27.72'
C5	N83°39'11"E	219.15'
C6	S48°29'25"E	143.82'
C7	N86°25'29"W	174.65'
C8	N84°21'30"W	148.38'



MATCH LINE
SHEET 5 OF 5

OSPREY PLAT
PAGE 03
BLOCK 34
RECORD MAP # 1704
ZONING PUD
QUAD # 04B
SE
TAX 1020
PUD NAME LANTANA ROAD