

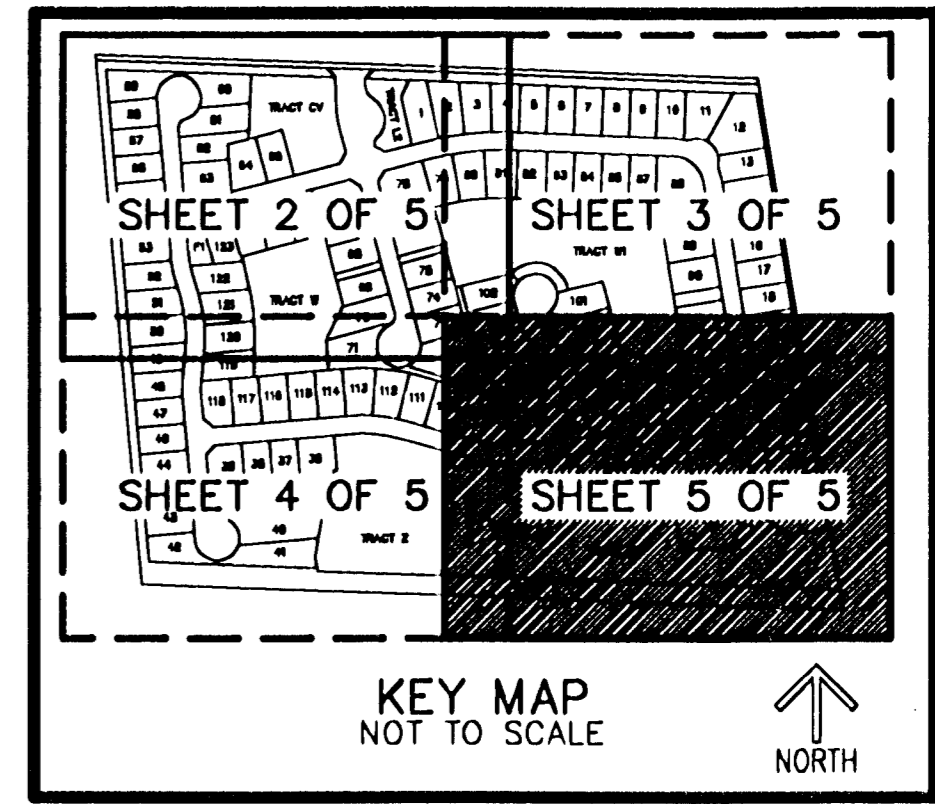
THIS INSTRUMENT PREPARED BY
DAVID P. LINDLEY
OF

CAULFIELD and WHEELER, INC.

SURVEYORS - ENGINEERS - PLANNERS
7301-A WEST PALMETTO PARK ROAD, SUITE 100A
BOCA RATON, FLORIDA 33433 - (561)392-1991
JUNE - 2003

OSPREY PLAT

A PLANNED UNIT DEVELOPMENT A PART OF LANTANA ROAD PUD
BEING A REPLAT OF A PORTION OF LOTS 1 AND 2, HIATUS TRACT 42, PALM BEACH FARMS COMPANY PLAT NO. 13
AS RECORDED IN PLAT BOOK 6, PAGES 98 AND 99 OF THE PUBLIC RECORDS OF PALM BEACH COUNTY, FLORIDA,
LYING IN TOWNSHIP 44 1/2 SOUTH, RANGE 42 EAST, PALM BEACH COUNTY, FLORIDA



5

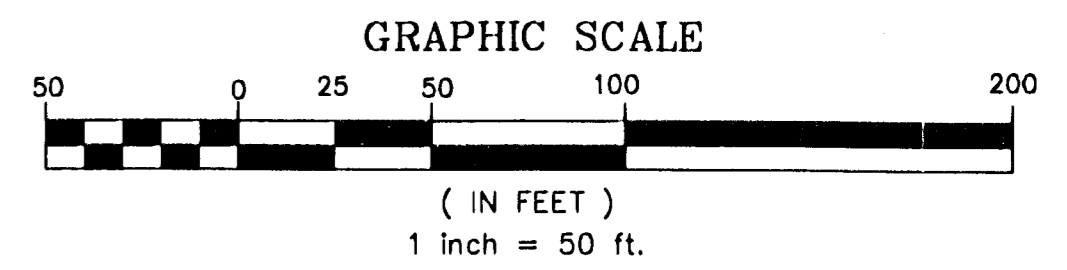
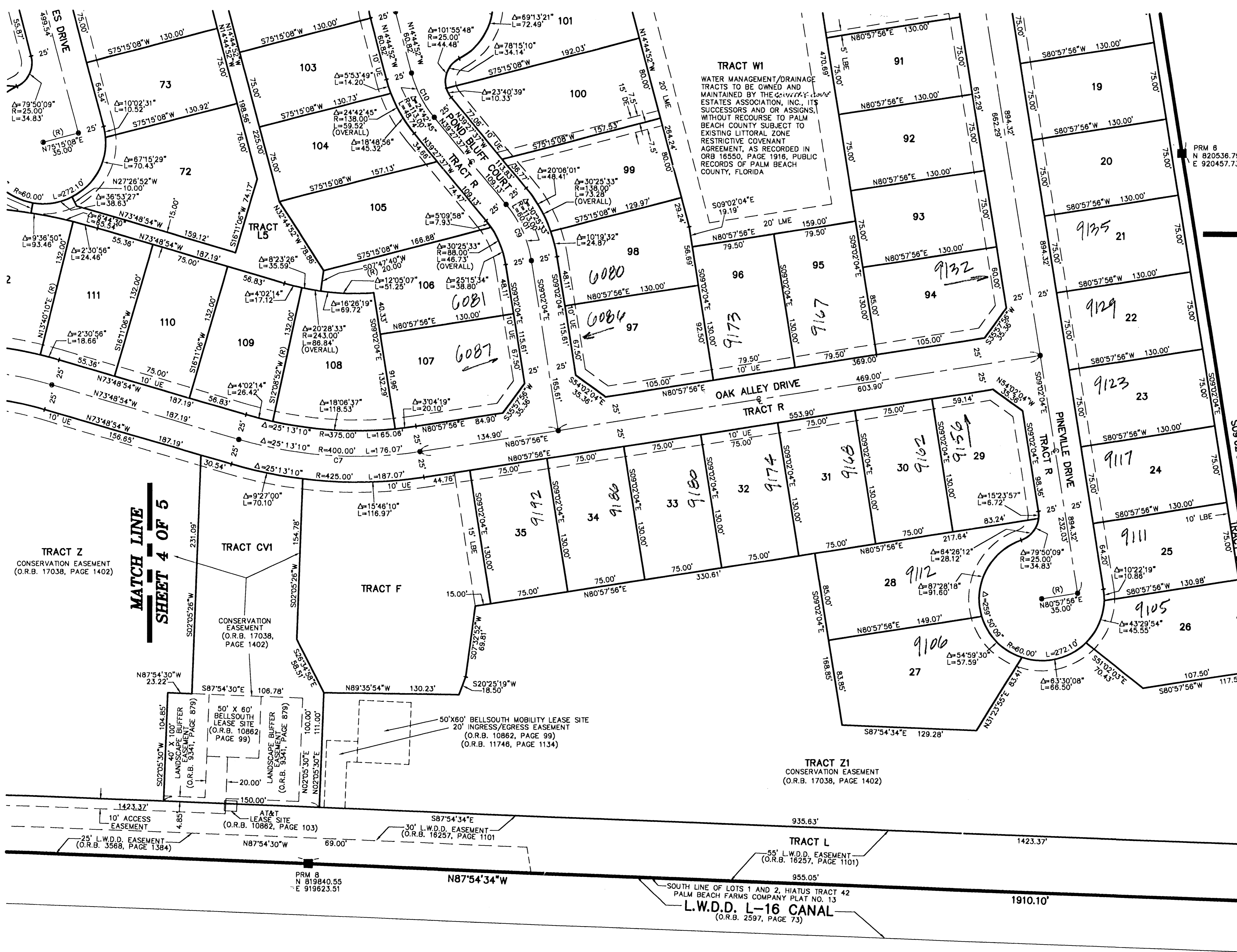
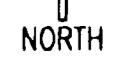
STATE OF FLORIDA
COUNTY OF PALM BEACH
THIS PLAT WAS FILED FOR
RECORD AT _____ M.
THIS _____ DAY OF _____
A.D. 2004 AND DULY RECORDED
IN PLAT BOOK _____ ON _____
PAGES _____ AND _____

DOROTHY H. WILKEN
CLERK CIRCUIT COURT

BY: _____
DEPUTY CLERK

SHEET 5 OF 5

KEY MAP
NOT TO SCALE



NOTES COORDINATES, BEARINGS AND DISTANCES

COORDINATES SHOWN ARE GRID
DATUM = NAD 83 1990 ADJUSTMENT
ZONE = FLORIDA EAST
LINEAR UNIT = US SURVEY FEET
COORDINATE SYSTEM 1983 STATE PLANE
TRANSVERSE MERCATOR PROJECTION
ALL DISTANCES ARE GROUND
SCALE FACTOR = 1.0000201
GROUND DISTANCE X SCALE FACTOR = GRID DISTANCE
BEARINGS AS SHOWN HEREON ARE GRID DATUM, NAD 83 1990
ADJUSTMENT, FLORIDA EAST ZONE.
N04°54'05" W (PLAT BEARING) 00°24'17" = BEARING ROTATION
N05°18'22" W (GRID BEARING) (PLAT TO GRID)
WEST LINE THIS PLAT COUNTERCLOCKWISE

CURVE TABLE

CURVE NO.	CHORD BEARING	CHORD DISTANCE
C1	S08°21'20"E	36.74'
C2	S10°48'12"E	30.85'
C3	S05°30'03"E	155.45'
C4	S00°24'04"W	27.72'
C5	N83°39'11"E	219.15'
C6	S48°29'25"E	143.62'
C7	N86°25'29"W	174.65'
C8	N84°21'30"W	148.38'

SUBMISSION OSPREY PLAT
BOOK 05 PAGE 05
FLOOR PLAN 110A
ZONING PUD
QUAD # 04B
SE
TAZ 0216
PUD NAME LANTANA ROAD

SHERBROOKE GOLF AND COUNTRY CLUB
(PLAT BOOK 69, PAGES 186-192)

L.W.D.D. L-16 CANAL
(O.R.B. 2597, PAGE 73)

PRM 8
N 819840.55
E 919623.51

PRM 7
N 819812.45
E 920578.16

PRM 8
N 820536.7911
E 920457.7360