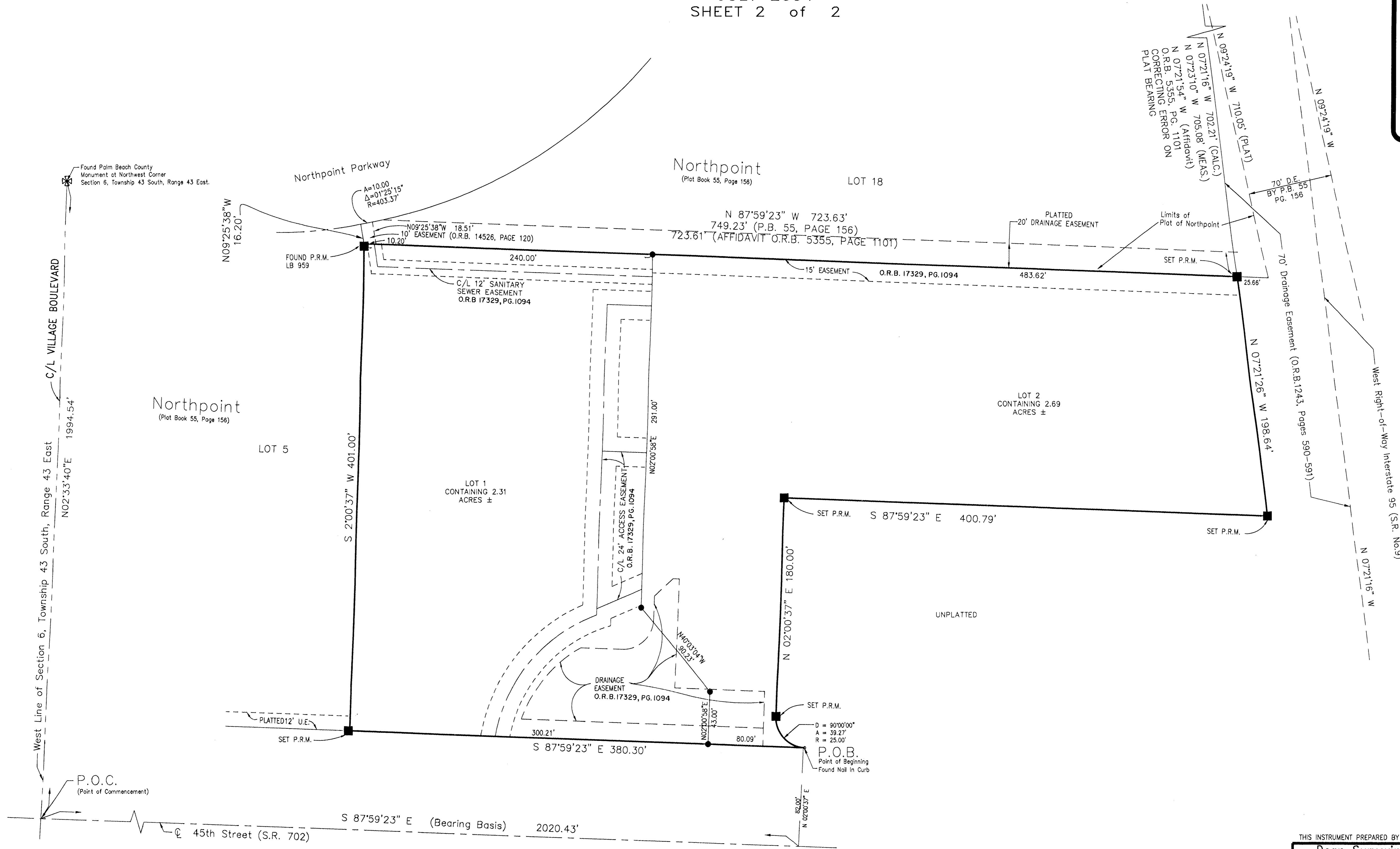


HARLEY SUBDIVISION

LYING IN THE NORTHWEST QUARTER OF SECTION 6, TOWNSHIP 43 SOUTH, RANGE 43 EAST, CITY OF WEST PALM BEACH, FLORIDA
JULY 2004
SHEET 2 of 2

11

STATE OF FLORIDA
COUNTY OF PALM BEACH
THIS PLAT WAS FILED FOR RECORD AT _____ THIS _____ DAY OF _____ A.D. 2004 AND DULY RECORDED IN PLAT BOOK _____ ON PAGES _____ AND _____
DOROTHY WILKEN, CLERK
CIRCUIT COURT.
BY: _____ DC



- LEGEND:**
- U.E. = UTILITY EASEMENT
 - LB = LICENSED BUSINESS
 - ORB. = OFFICIAL RECORDS BOOK
 - PB. = PLAT BOOK
 - PG(s). = PAGE OR PAGES
 - PLS. = PROFESSIONAL LAND SURVEYOR
 - P.O.B. = POINT OF BEGINNING
 - = SET 1/2" IRON ROD & CAP L.B. # 6936
 - Sq. Ft. = SQUARE FOOTAGE
 - PK = PARKER KALON NAIL
 - PRM = PERMANENT REFERENCE MONUMENT
 - = SET PRM LB 6936
 - ▲ = SET PK AND DISK # 6936
 - ⊙ = CENTERLINE

THIS INSTRUMENT PREPARED BY RICHARD N. DEAN IN THE OFFICE OF:

Dean Surveying and Mapping, Inc.
"The Measuring Line Shall Go Forth" Jeremiah 31:39
5114 Okeechobee Blvd.
Suite 102
Tel: (561) 625-8748 West Palm Beach, Florida Facsimile: (561) 626-4558

RECORD PLAT

HARLEY SUBDIVISION

C.A.D.D.	D.J.M.	Checked	Date	JULY, 2004
Field			Job No.	
Scale 1" = 40'	Sheet 2 of 2			04-609