

VALENCIA VII (A.K.A. FICHERA) PLANNED UNIT DEVELOPMENT

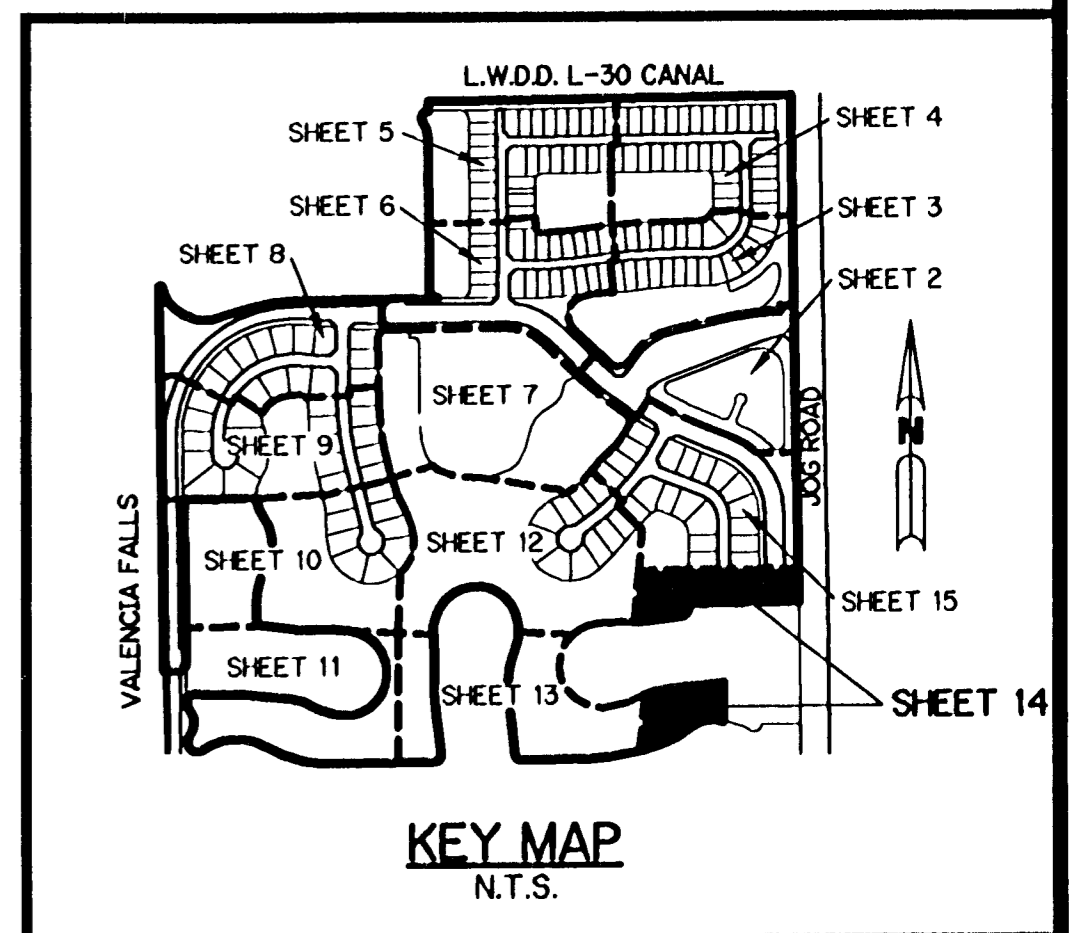
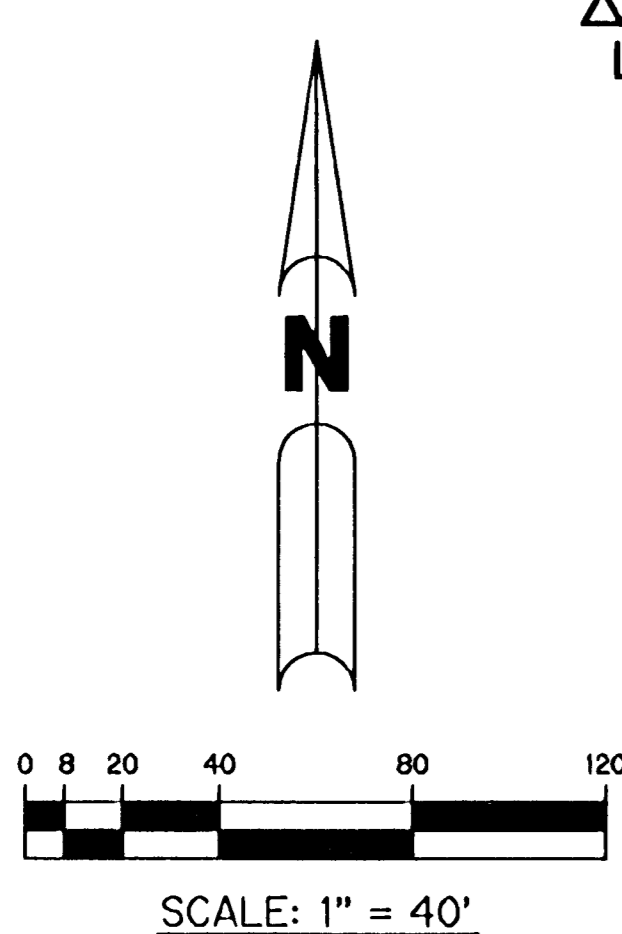
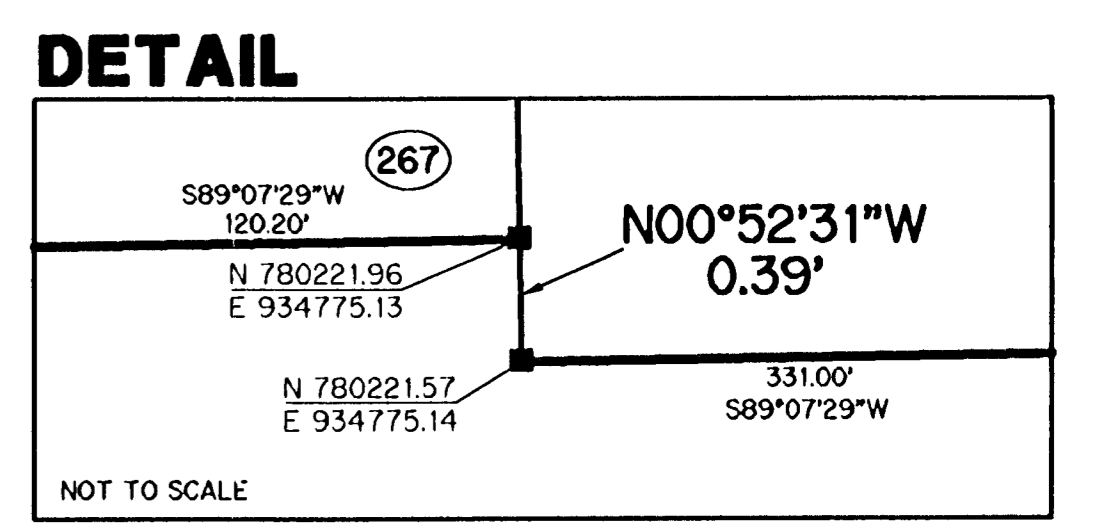
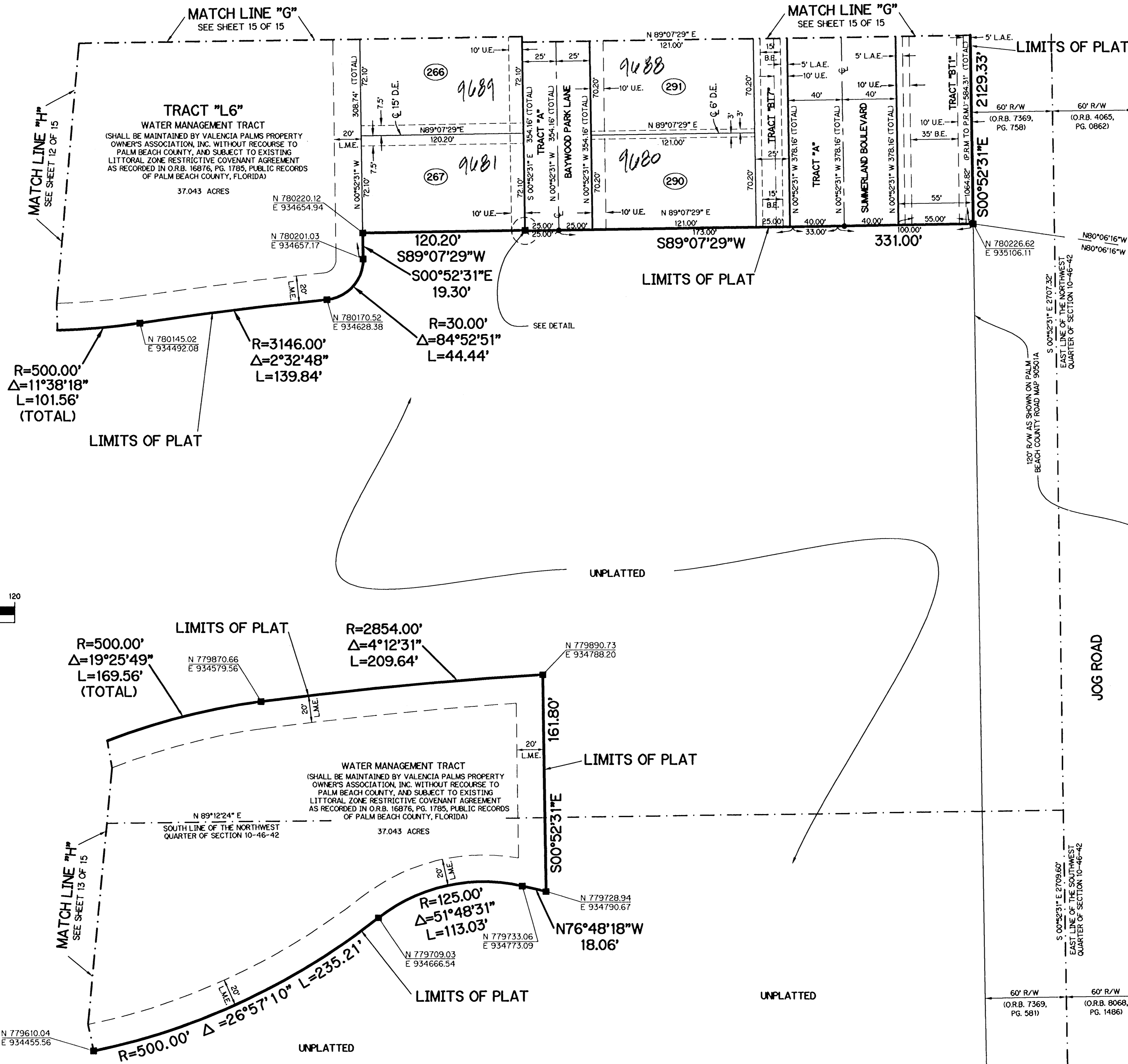
VALENCIA PALMS - PLAT ONE

A PARCEL OF LAND LYING IN THE NORTHWEST 1/4 AND THE SOUTHWEST 1/4 OF SECTION 10, TOWNSHIP 46 SOUTH, RANGE 42 EAST, PALM BEACH COUNTY, FLORIDA

SHEET 14 OF 15 FEBRUARY, 2004

THIS INSTRUMENT PREPARED BY
 PERRY C. WHITE, P.S.M. 4213, STATE OF FLORIDA
 LAWSON, NOBLE AND WEBB, INC.
 ENGINEERS PLANNERS SURVEYORS
 420 COLUMBIA DRIVE
 WEST PALM BEACH, FLORIDA 33409
 LB-6674

25



VALENCIA PALMS - PL 1
 DATE 25
 RECORD # 2004
 PLAT # 10
 SHEET # 14
 OF 15
 PREPARED BY
 PERRY C. WHITE
 ENGINEER

NOTE:
 COORDINATES SHOWN ARE GRID COORDINATES
 DATUM = NAD 83 (1990 ADJUSTMENT)
 ZONE = FLORIDA EAST ZONE
 LINEAR UNIT = U.S. SURVEY FEET
 COORDINATE SYSTEM = 1983 STATE PLANE
 TRANSVERSE MERCATOR PROJECTION
 ALL DISTANCES ARE GROUND
 SCALE FACTOR = 1.0000304
 PLAT BEARING = GRID BEARING
 NO ROTATION