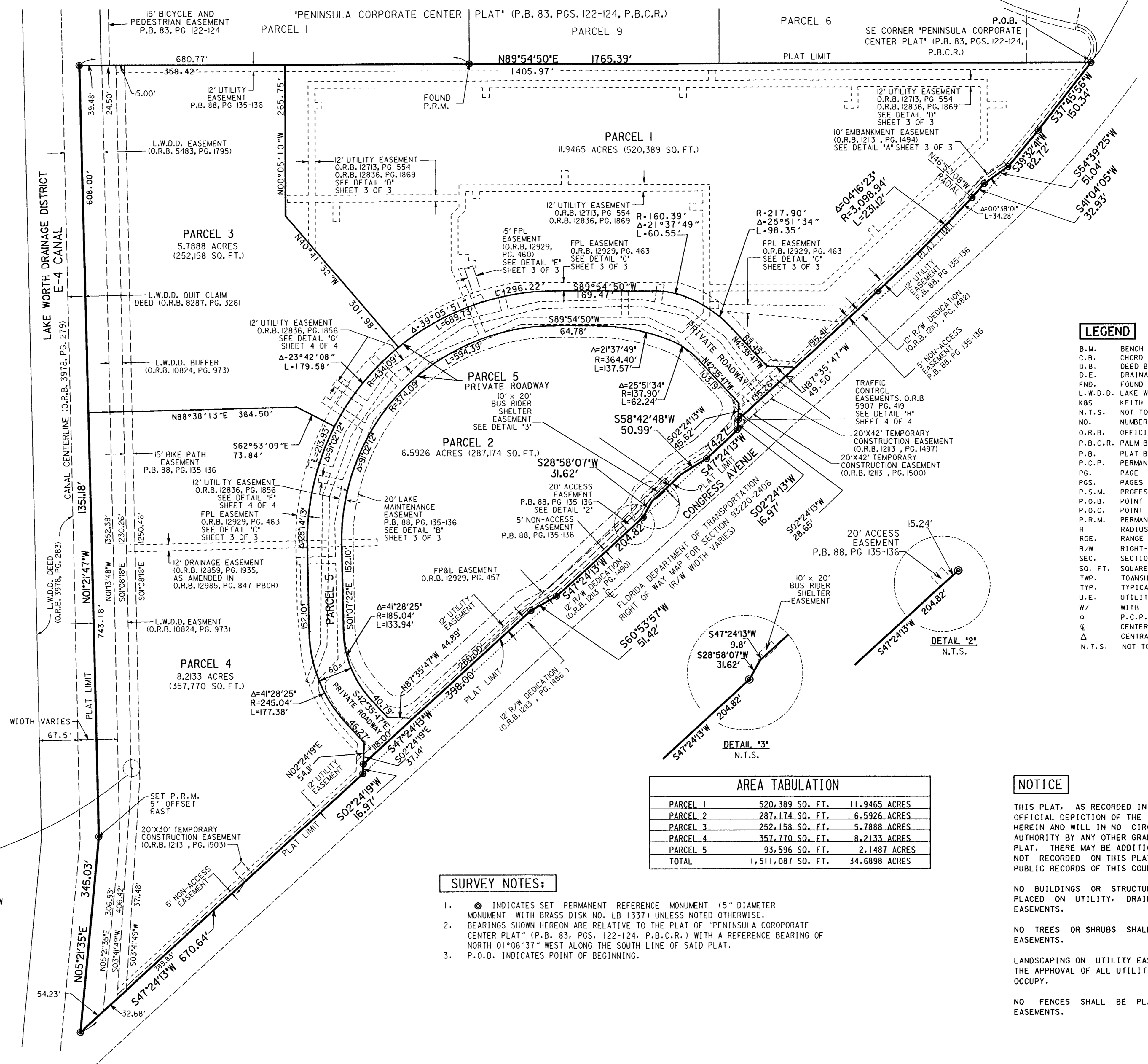
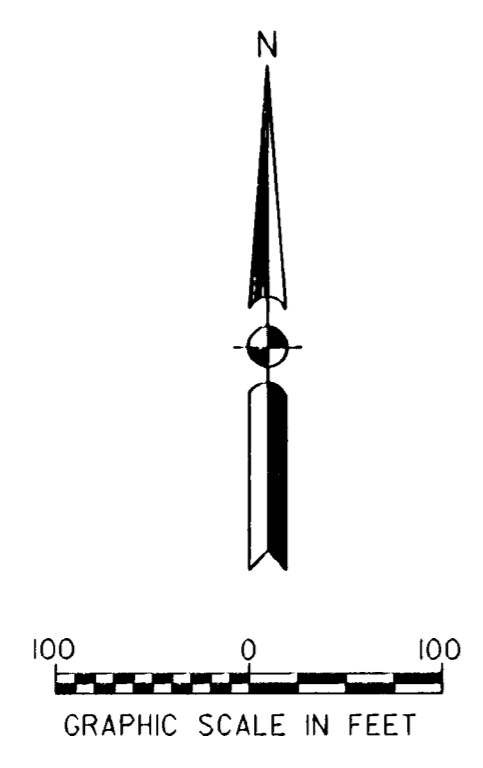
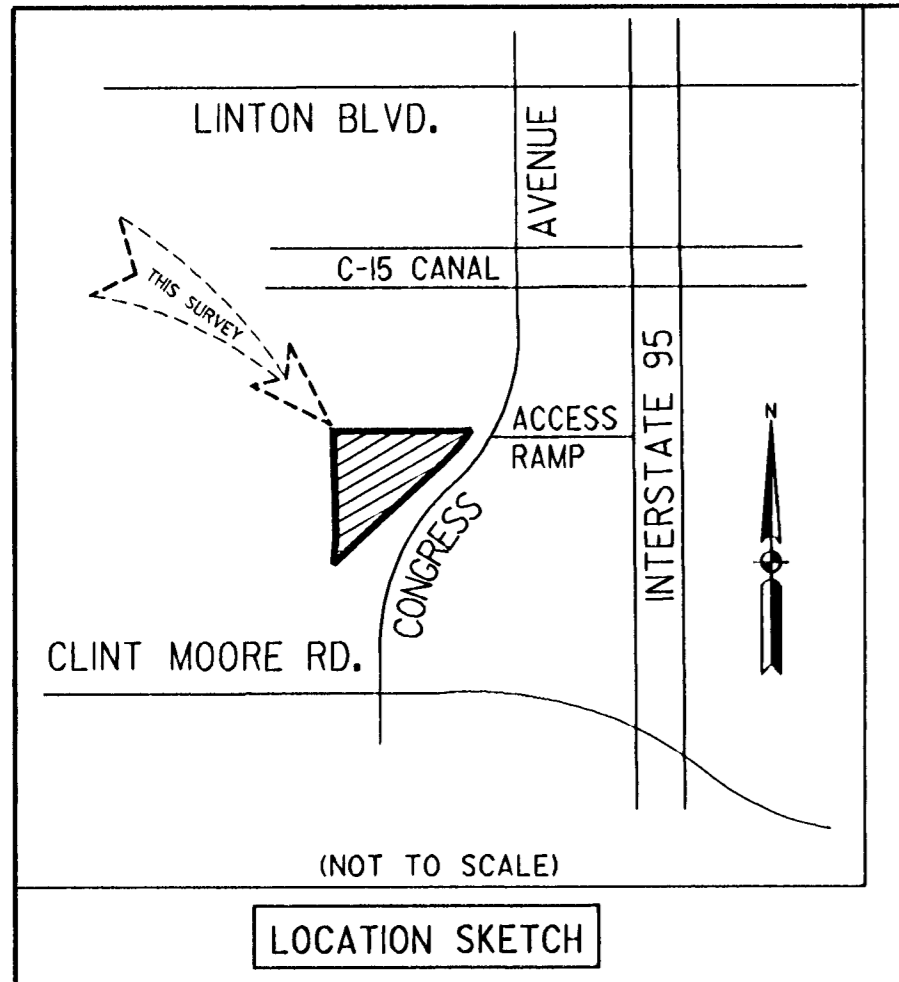


"REPLAT OF BEACON SQUARE AT BOCA RATON"
 A REPLAT OF "BEACON SQUARE AT BOCA RATON" AS RECORDED IN PLAT BOOK 88, PAGES 135 THROUGH 136
 SECTION 31, TOWNSHIP 46 SOUTH, RANGE 43 EAST
 CITY OF BOCA RATON, PALM BEACH COUNTY, FLORIDA.

STATE OF FLORIDA
 COUNTY OF PALM BEACH
 THIS PLAT WAS FILED FOR RECORD
 AT _____ M, THIS _____ DAY
 OF _____, 2004, AND DULY
 RECORDED IN PLAT BOOK NO. _____
 ON PAGES _____ THRU _____
 DOROTHY WILKEN
 CLERK CIRCUIT COURT
 BY: _____ D.C.

PREPARED BY:
KEITH AND SCHNARS, P.A.
 ENGINEERS - PLANNERS - SURVEYORS
 6500 NORTH ANDREWS AVENUE
 FORT LAUDERDALE, FLORIDA 33309
 (954) 776-1616
 OCTOBER 1999
 L:\P\199646:625IUPL2.DGN



LEGEND

- B.M. BENCH MARK
- C.B. CHORD BEARING
- D.B. DEED BOOK
- D.E. DRAINAGE EASEMENT
- FND. FOUND
- L.W.D.D. LAKE WORTH DRAINAGE DISTRICT
- K&S KEITH AND SCHNARS, P.A.
- N.T.S. NOT TO SCALE
- NO. NUMBER
- O.R.B. OFFICIAL RECORD BOOK
- P.B.C.R. PALM BEACH COUNTY RECORDS
- P.B. PLAT BOOK
- P.C.P. PERMANENT CONTROL POINT
- PG. PAGE
- PGS. PAGES
- P.S.M. PROFESSIONAL SURVEYOR AND MAPPER
- P.O.B. POINT OF BEGINNING
- P.O.C. POINT OF COMMENCEMENT
- P.R.M. PERMANENT REFERENCE MONUMENT
- R. RADIUS
- RGE. RANGE
- R/W. RIGHT-OF-WAY
- SEC. SECTION
- SQ. FT. SQUARE FEET
- TWP. TOWNSHIP
- TYP. TYPICAL
- U.E. UTILITY EASEMENT
- W. WITH
- o P.C.P.
- ⊙ CENTERLINE
- Δ CENTRAL ANGLE
- N.T.S. NOT TO SCALE

AREA TABULATION

PARCEL 1	520,389 SQ. FT.	11.9465 ACRES
PARCEL 2	287,174 SQ. FT.	6.5926 ACRES
PARCEL 3	252,158 SQ. FT.	5.7888 ACRES
PARCEL 4	357,170 SQ. FT.	8.2133 ACRES
PARCEL 5	93,596 SQ. FT.	2.1487 ACRES
TOTAL	1,511,087 SQ. FT.	34.6899 ACRES

- SURVEY NOTES:**
- ⊙ INDICATES SET PERMANENT REFERENCE MONUMENT (5" DIAMETER MONUMENT WITH BRASS DISK NO. LB 1337) UNLESS NOTED OTHERWISE.
 - BEARINGS SHOWN HEREON ARE RELATIVE TO THE PLAT OF "PENINSULA CORPORATE CENTER PLAT" (P.B. 83, PGS. 122-124, P.B.C.R.) WITH A REFERENCE BEARING OF NORTH 01°06'37" WEST ALONG THE SOUTH LINE OF SAID PLAT.
 - P.O.B. INDICATES POINT OF BEGINNING.

NOTICE

THIS PLAT, AS RECORDED IN ITS GRAPHIC FORM, IS THE OFFICIAL DEPICTION OF THE SUBDIVIDED LANDS DESCRIBED HEREIN AND WILL IN NO CIRCUMSTANCES BE SUPPLANTED IN AUTHORITY BY ANY OTHER GRAPHIC OR DIGITAL FORM OF THE PLAT. THERE MAY BE ADDITIONAL RESTRICTIONS THAT ARE NOT RECORDED ON THIS PLAT THAT MAY BE FOUND IN THE PUBLIC RECORDS OF THIS COUNTY.

NO BUILDINGS OR STRUCTURES OF ANY KIND SHALL BE PLACED ON UTILITY, DRAINAGE OR LAKE MAINTENANCE EASEMENTS.

NO TREES OR SHRUBS SHALL BE PLACED ON DRAINAGE EASEMENTS.

LANDSCAPING ON UTILITY EASEMENTS SHALL ONLY BE WITH THE APPROVAL OF ALL UTILITIES HAVING THE RIGHT TO OCCUPY.

NO FENCES SHALL BE PLACED ON LAKE MAINTENANCE EASEMENTS.

