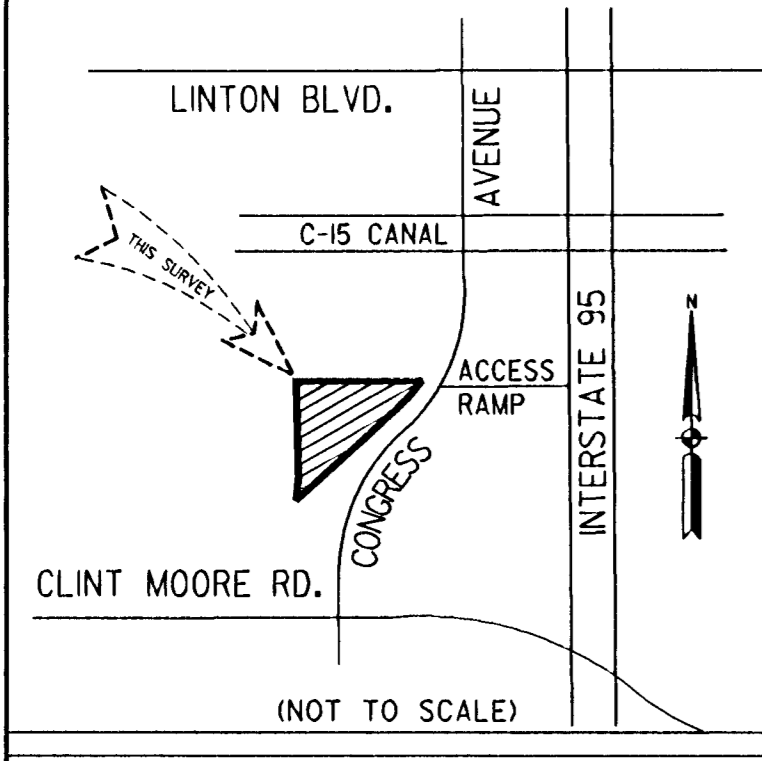
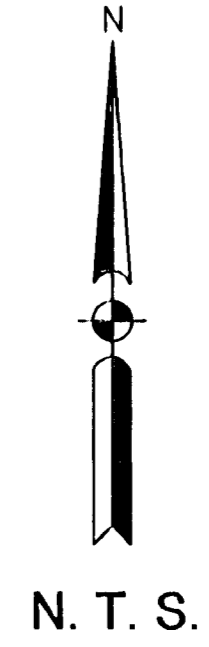


# "REPLAT OF BEACON SQUARE AT BOCA RATON"

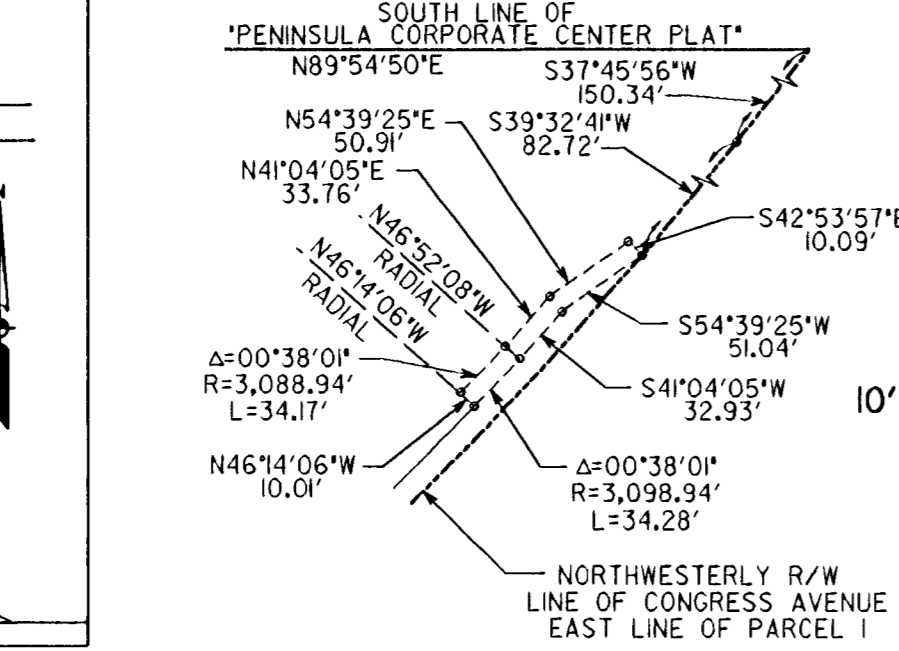
A REPLAT OF 'BEACON SQUARE AT BOCA RATON' AS RECORDED IN PLAT BOOK 88, PAGES 135 THROUGH 136  
SECTION 31, TOWNSHIP 46 SOUTH, RANGE 43 EAST  
CITY OF BOCA RATON, PALM BEACH COUNTY, FLORIDA.

PREPARED BY:  
KEITH AND SCHNARS, P.A.  
ENGINEERS - PLANNERS - SURVEYORS  
6500 NORTH ANDREWS AVENUE  
FORT LAUDERDALE, FLORIDA 33309  
(954) 776-1616  
OCTOBER 1999  
L:P:ISURV:99646:625IUPL2.DGN

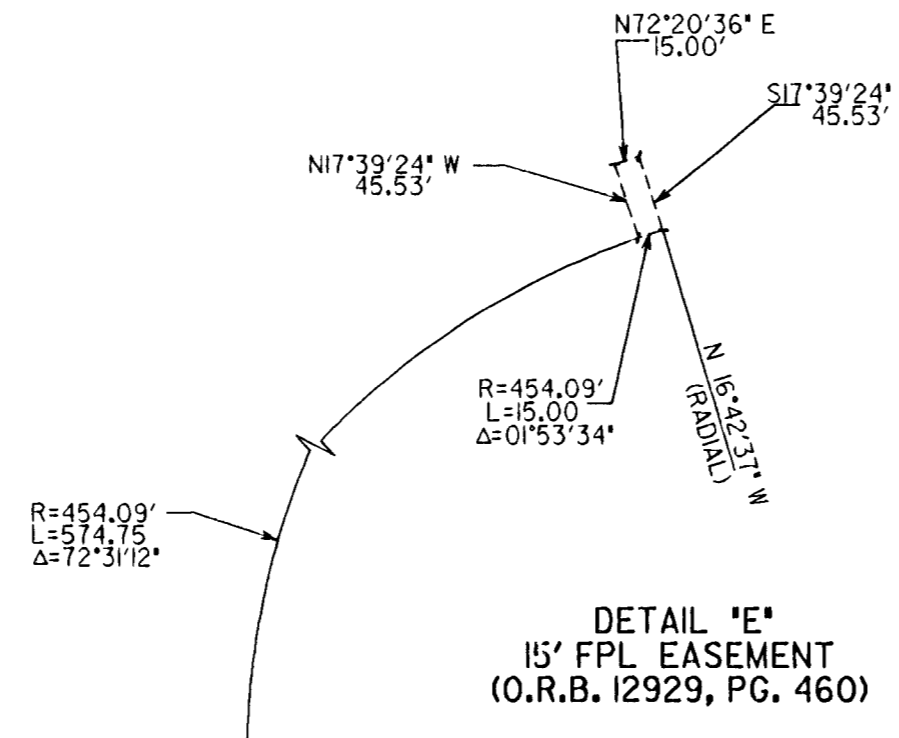
STATE OF FLORIDA  
COUNTY OF PALM BEACH  
THIS PLAT WAS FILED FOR RECORD  
AT \_\_\_\_\_ M, THIS \_\_\_\_\_ DAY  
OF \_\_\_\_\_, 2004, AND DULY  
RECORDED IN PLAT BOOK NO. \_\_\_\_\_  
ON PAGES \_\_\_\_\_ THRU \_\_\_\_\_  
DOROTHY WILKEN  
CLERK CIRCUIT COURT  
BY: \_\_\_\_\_ D.C.



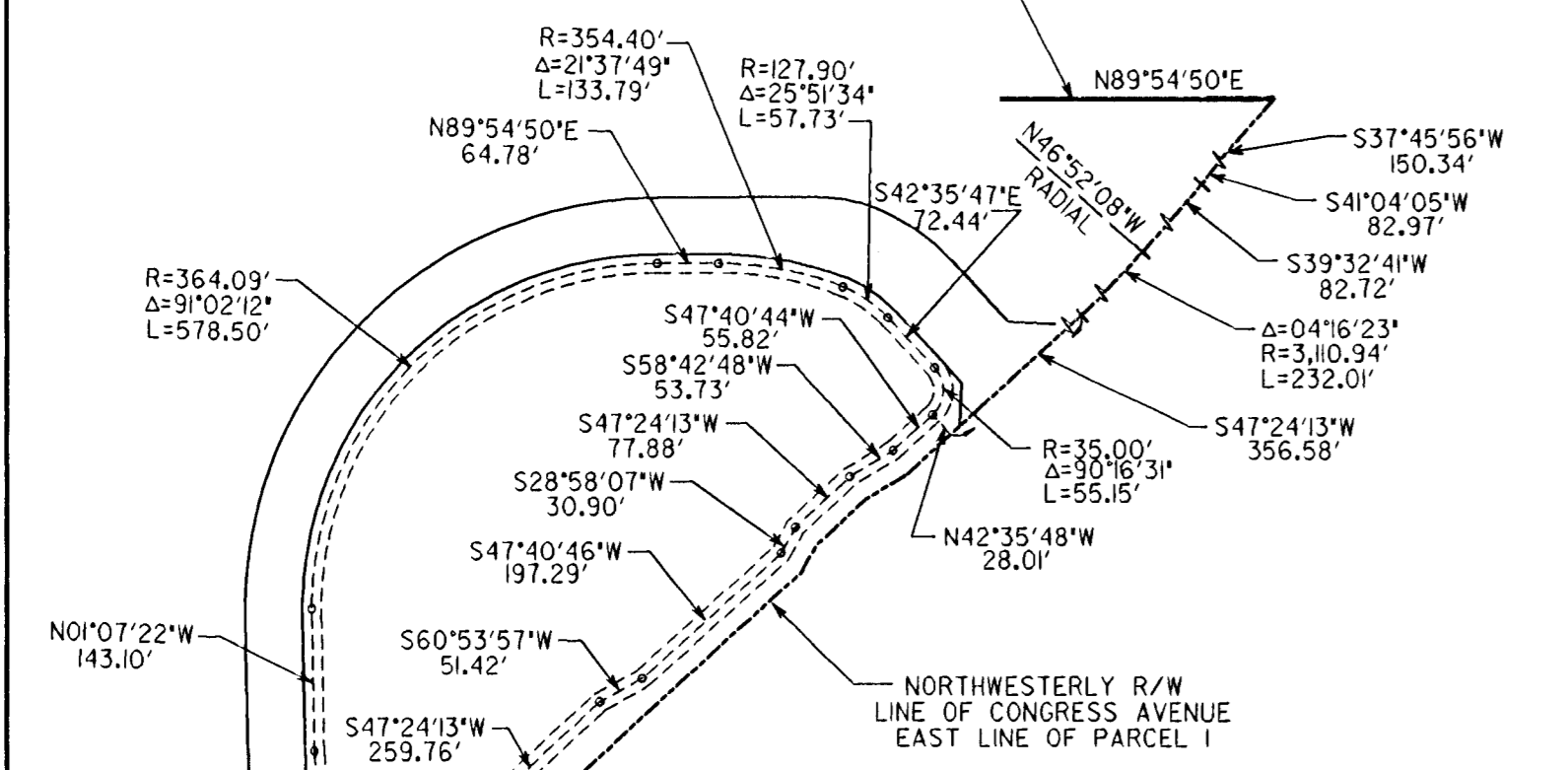
LOCATION SKETCH



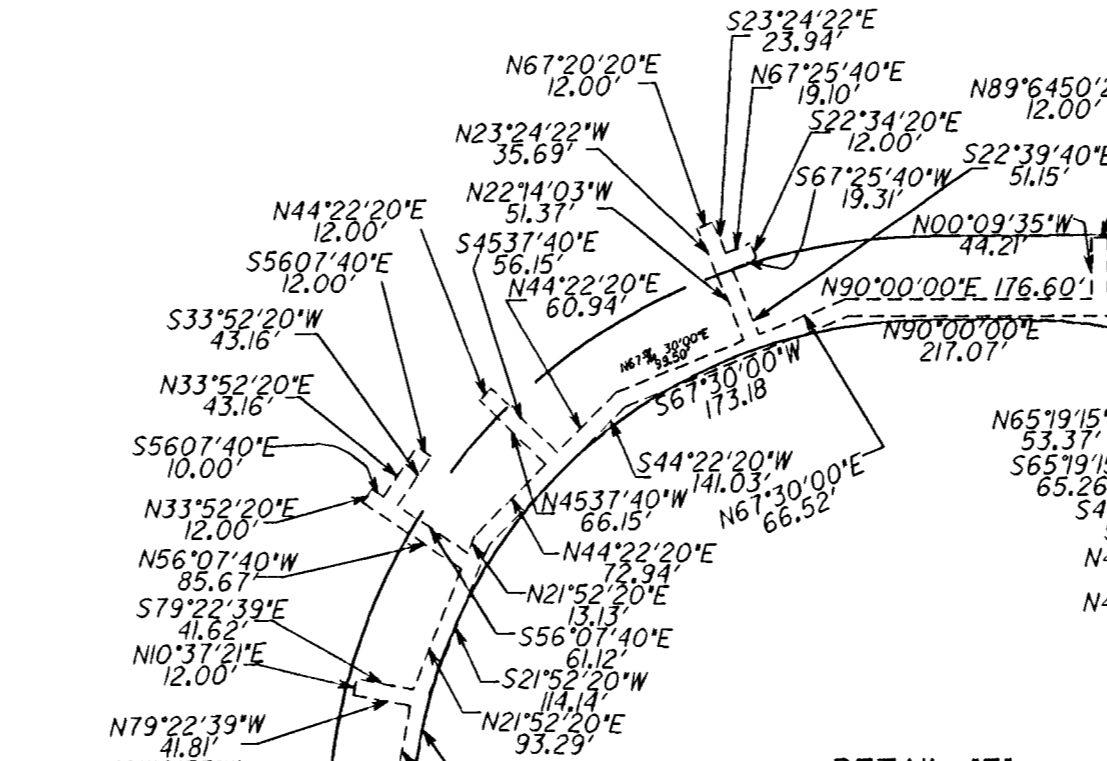
DETAIL 'A'  
10' EMBANKMENT EASEMENT  
(O.R.B. 12113, PG. 1494)



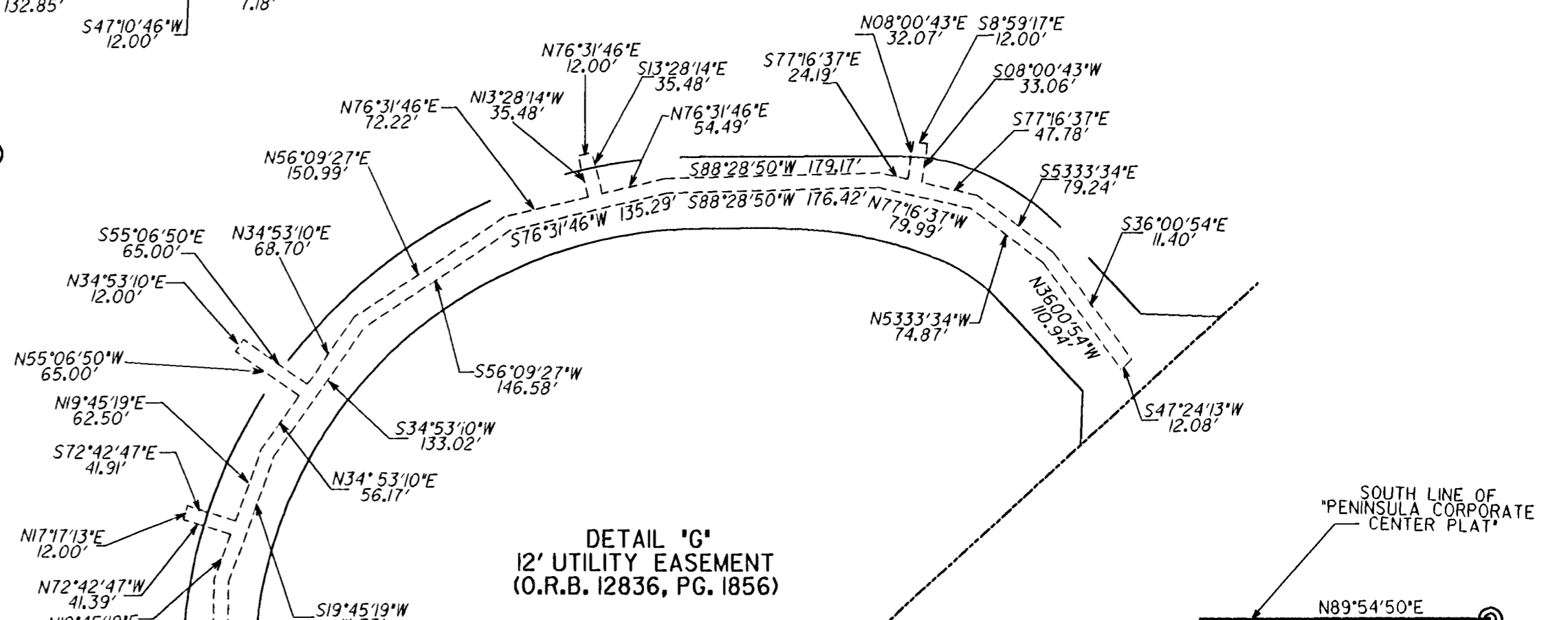
DETAIL 'E'  
15' FPL EASEMENT  
(O.R.B. 12929, PG. 460)



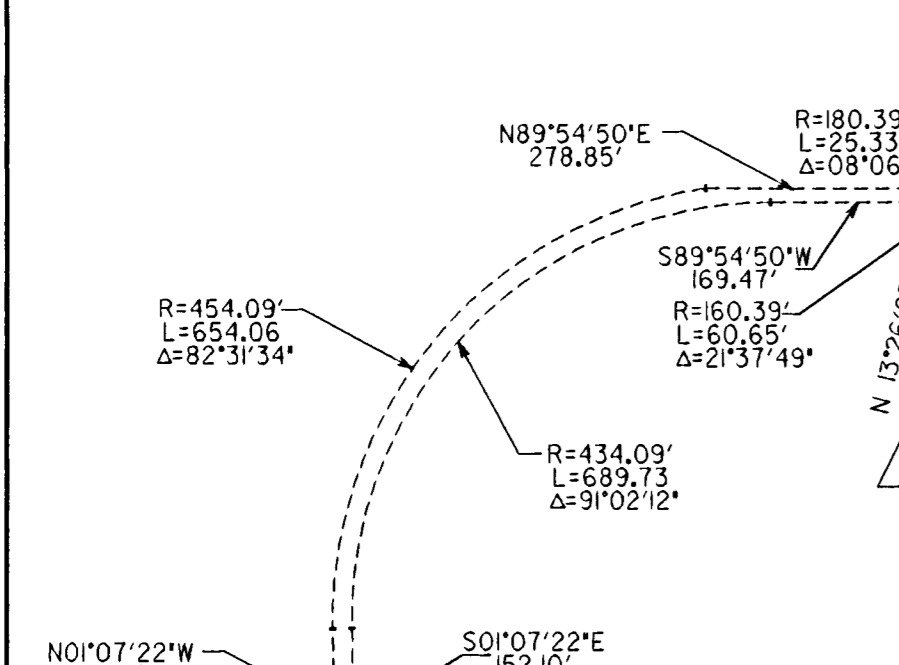
DETAIL 'B'  
20' LAKE MAINTENANCE EASEMENT  
(P.B. 88, PG. 135-136)  
CENTERLINE DIMENSION



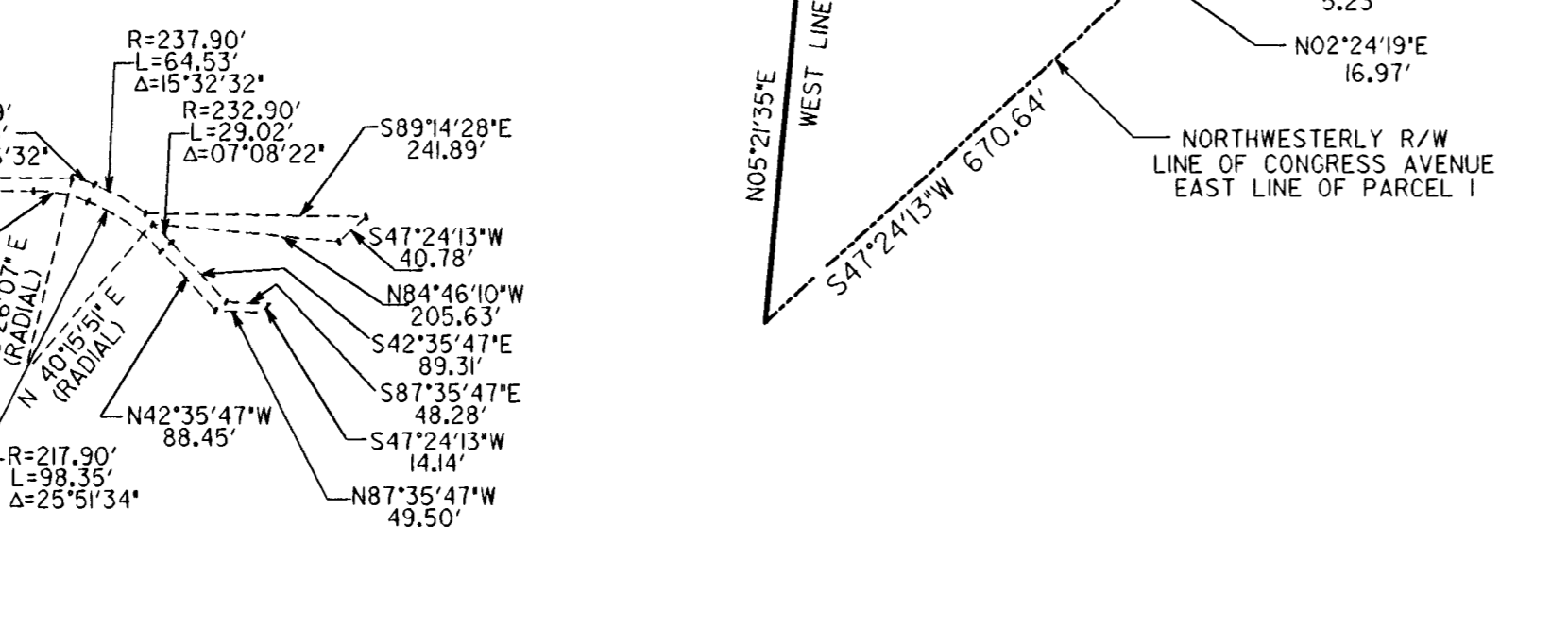
DETAIL 'F'  
12' UTILITY EASEMENT  
(O.R.B. 12836, PG. 1856)



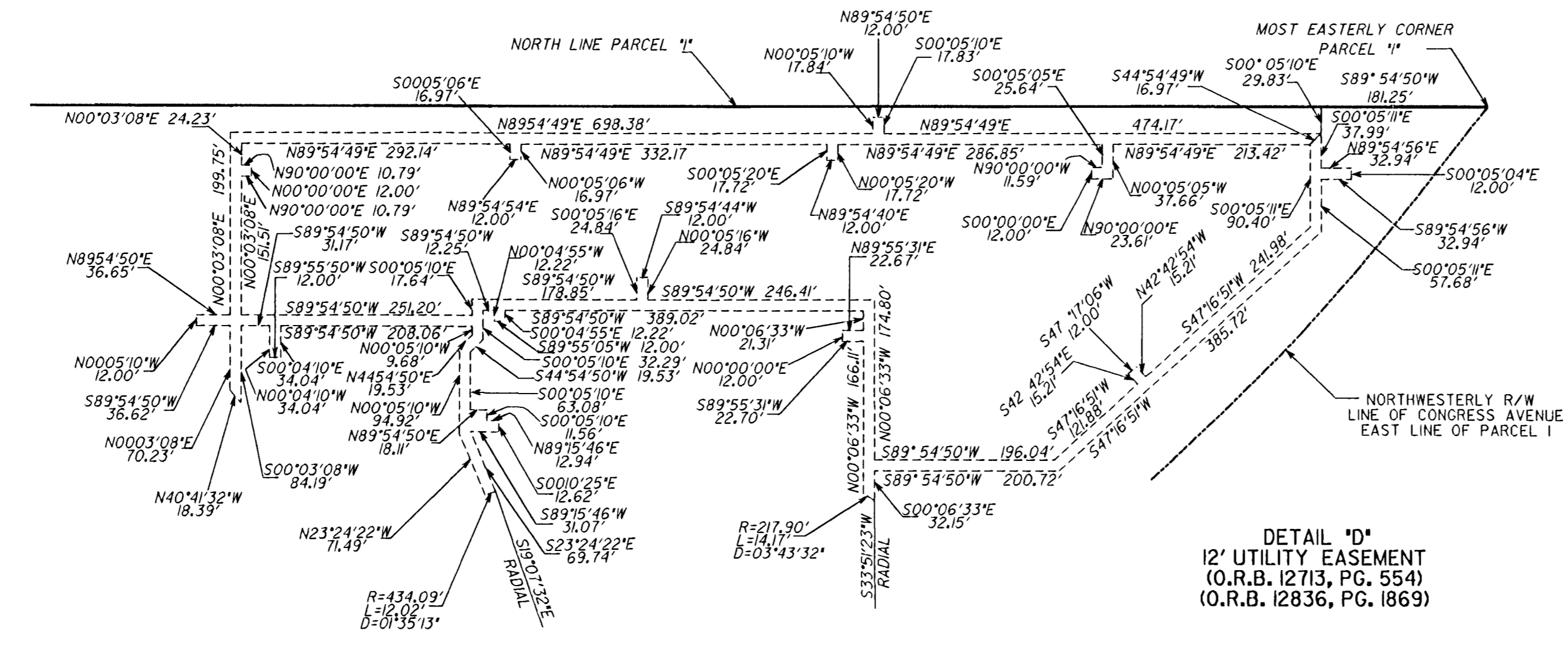
DETAIL 'G'  
12' UTILITY EASEMENT  
(O.R.B. 12836, PG. 1856)



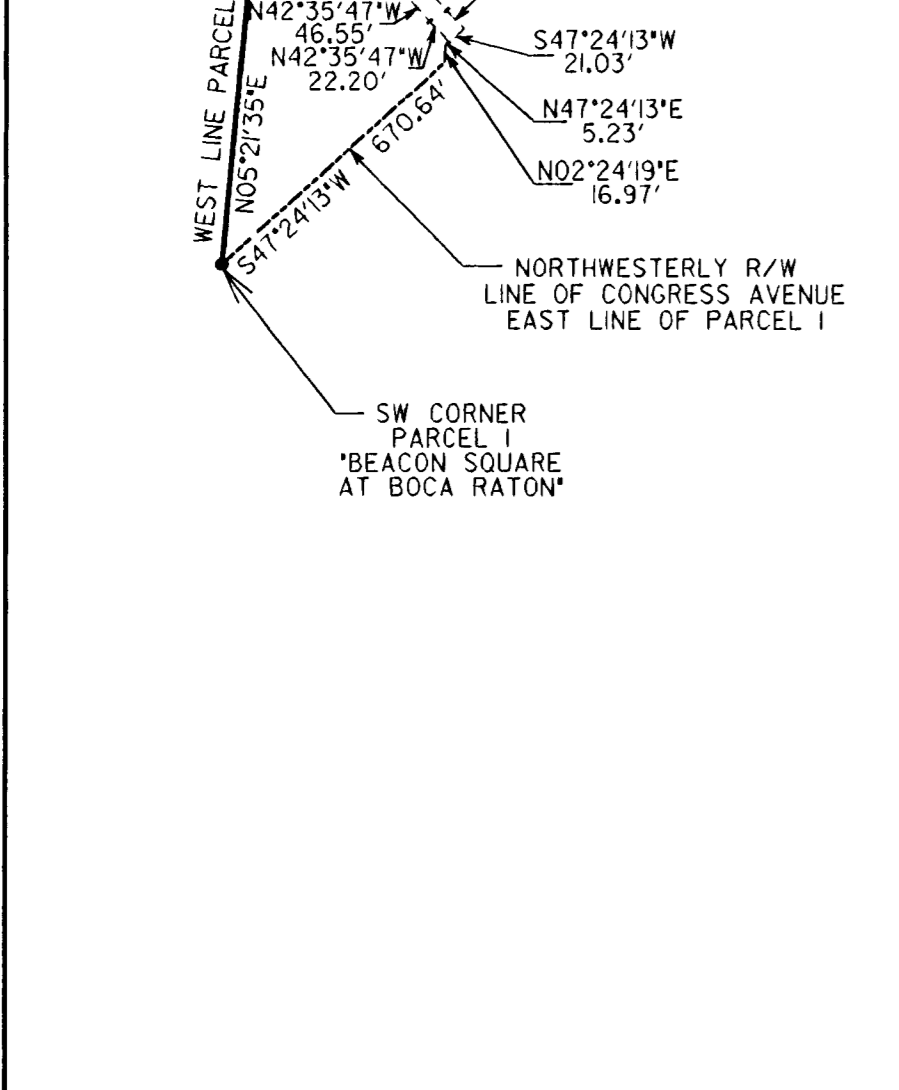
DETAIL 'C'  
12' FPL EASEMENT  
(O.R.B. 12929, PG. 463)



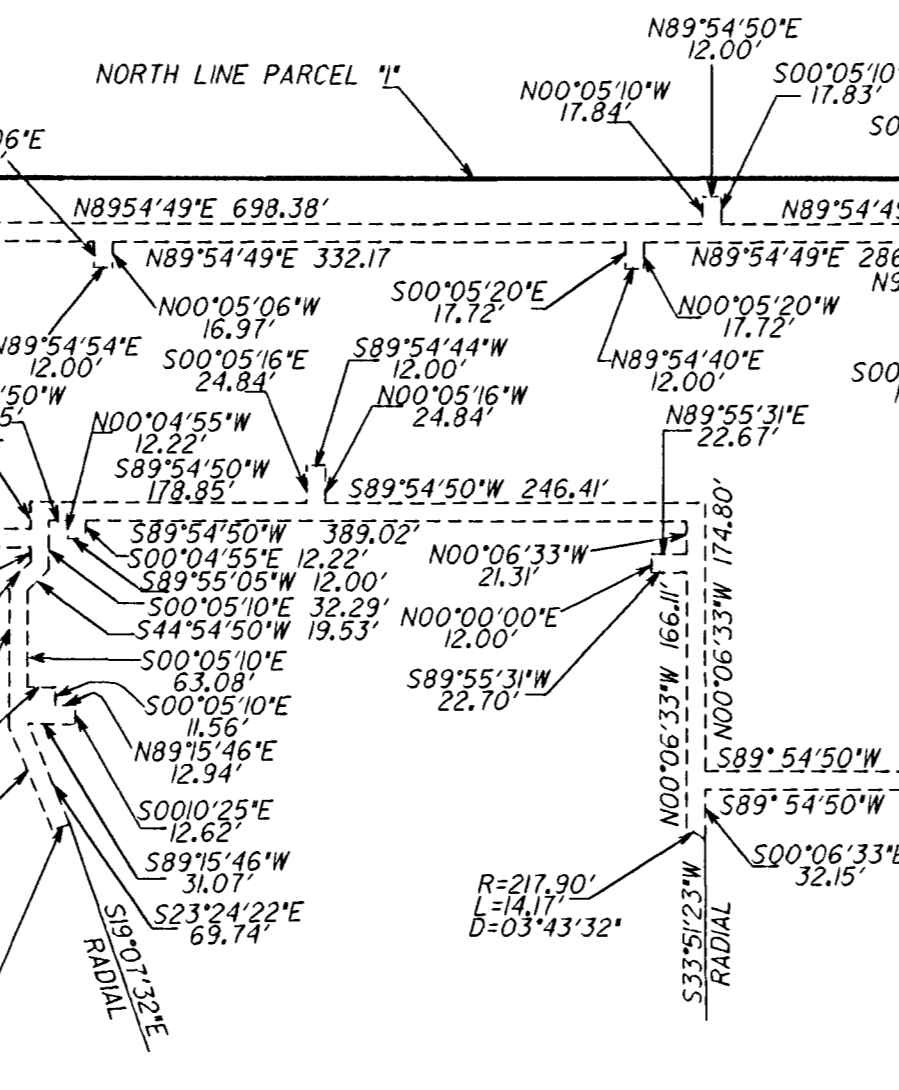
DETAIL 'D'  
12' UTILITY EASEMENT  
(O.R.B. 12113, PG. 554)  
(O.R.B. 12836, PG. 1869)



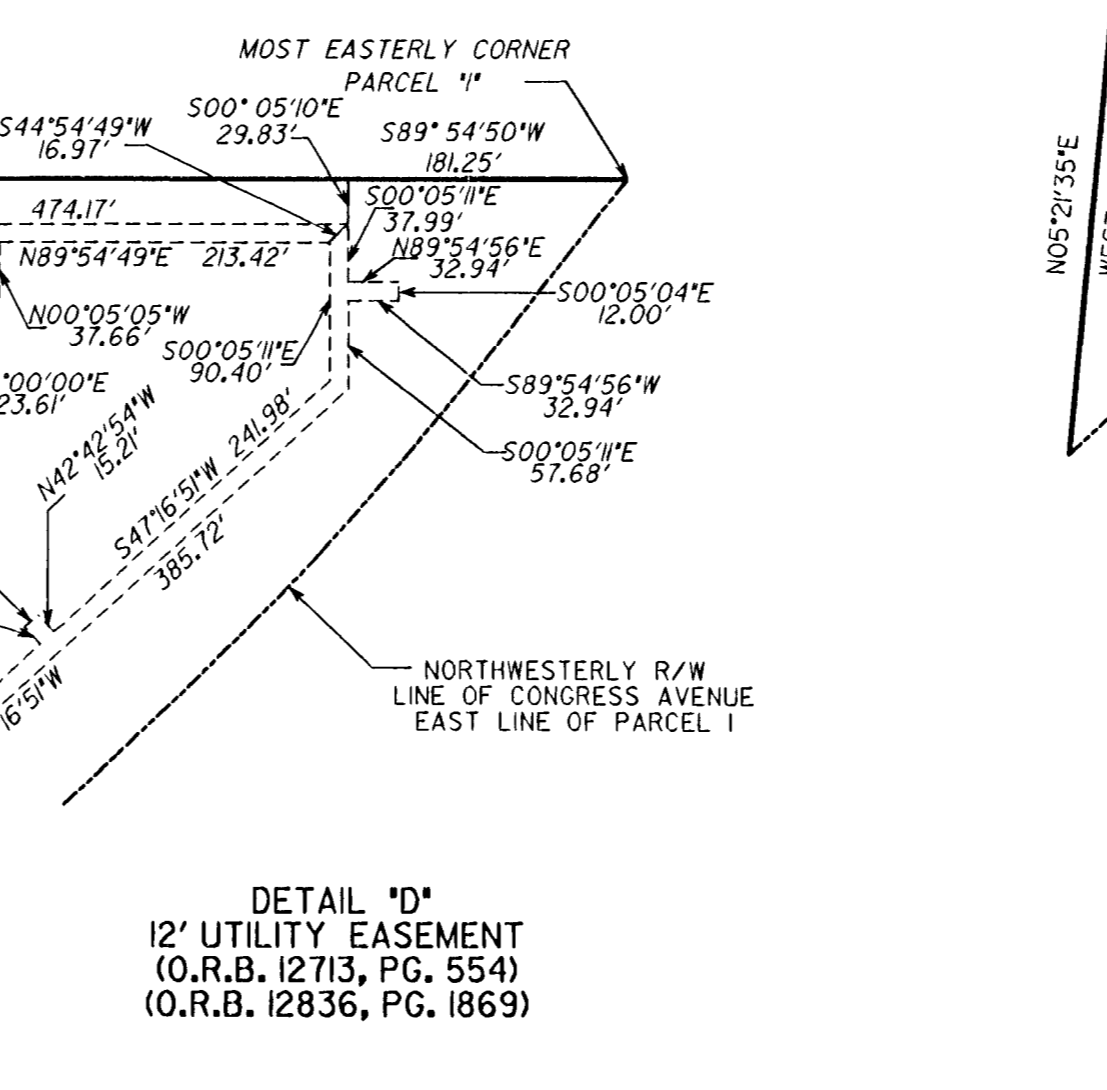
DETAIL 'H'  
TRAFFIC CONTROL EASEMENTS  
(O.R.B. 5907, PG. 419)



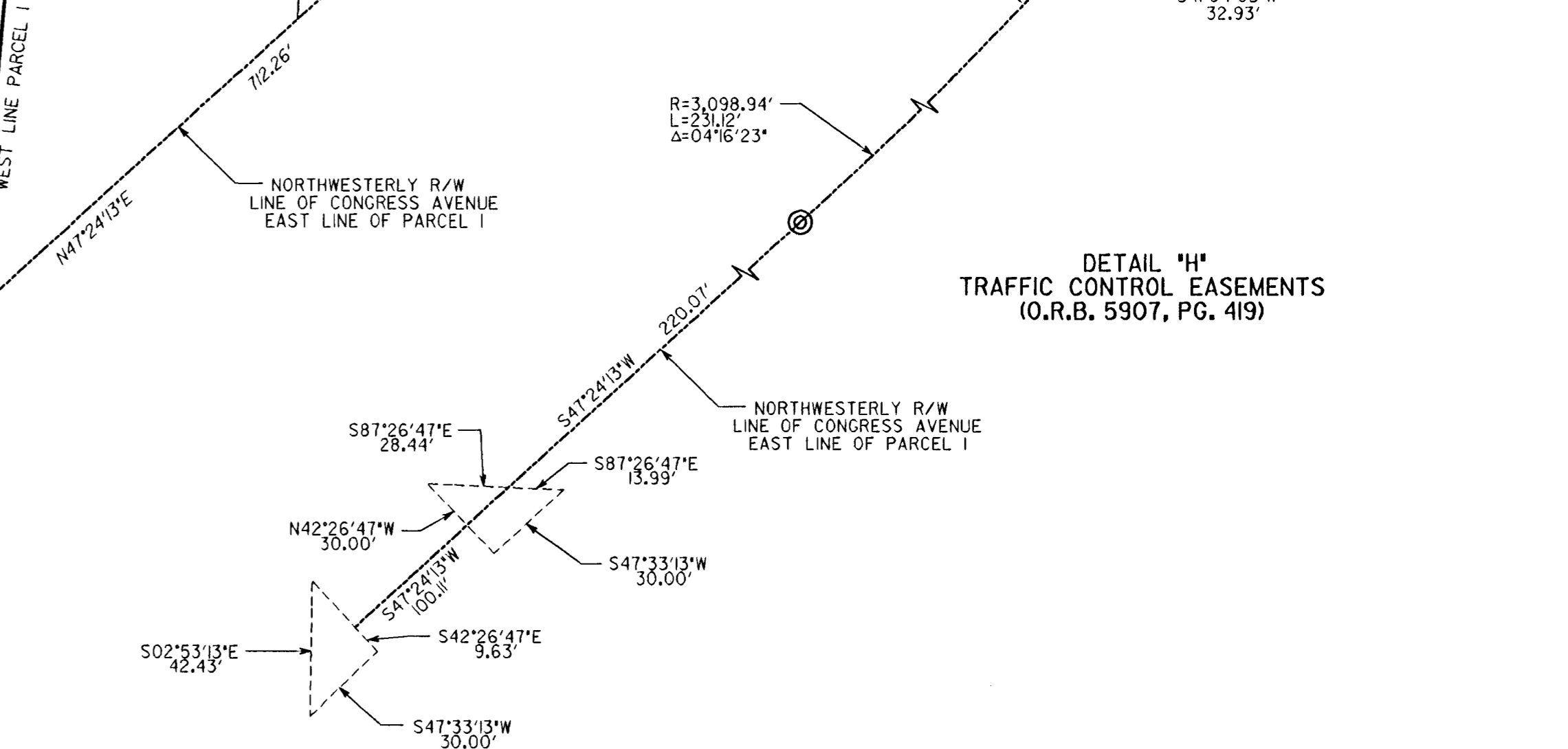
WEST LINE PARCEL I



NORTH LINE PARCEL 'I'



WEST LINE PARCEL I



WEST LINE PARCEL I

SW CORNER PARCEL I 'BEACON SQUARE AT BOCA RATON'