

OAKS AT BOCA RATON PLAT SIX

THIS INSTRUMENT PREPARED BY
DAVID P. LINDLEY
OF
CAULFIELD and WHEELER, INC.
SURVEYORS - ENGINEERS - PLANNERS
7301-A WEST PALMETTO PARK ROAD, SUITE 100A
BOCA RATON, FLORIDA 33433 - (561)392-1991
OCTOBER - 2003

A PLANNED UNIT DEVELOPMENT BEING A PART OF RAINBOW PUD
BEING A REPLAT OF A PORTION OF BLOCK 70, "PALM BEACH FARMS COMPANY PLAT NO. 3", AS RECORDED IN PLAT BOOK 2, PAGES 45 THROUGH 54,
AND TRACT A, OAKS AT BOCA RATON PLAT FIVE, AS RECORDED IN PLAT BOOK 100, PAGES 76 THROUGH 83,
BOTH OF THE PUBLIC RECORDS OF PALM BEACH COUNTY, FLORIDA
LYING IN SECTIONS 31 AND 32, TOWNSHIP 46 SOUTH, RANGE 42 EAST,
AND SECTIONS 5 AND 6, TOWNSHIP 47 SOUTH, RANGE 42 EAST, PALM BEACH COUNTY, FLORIDA

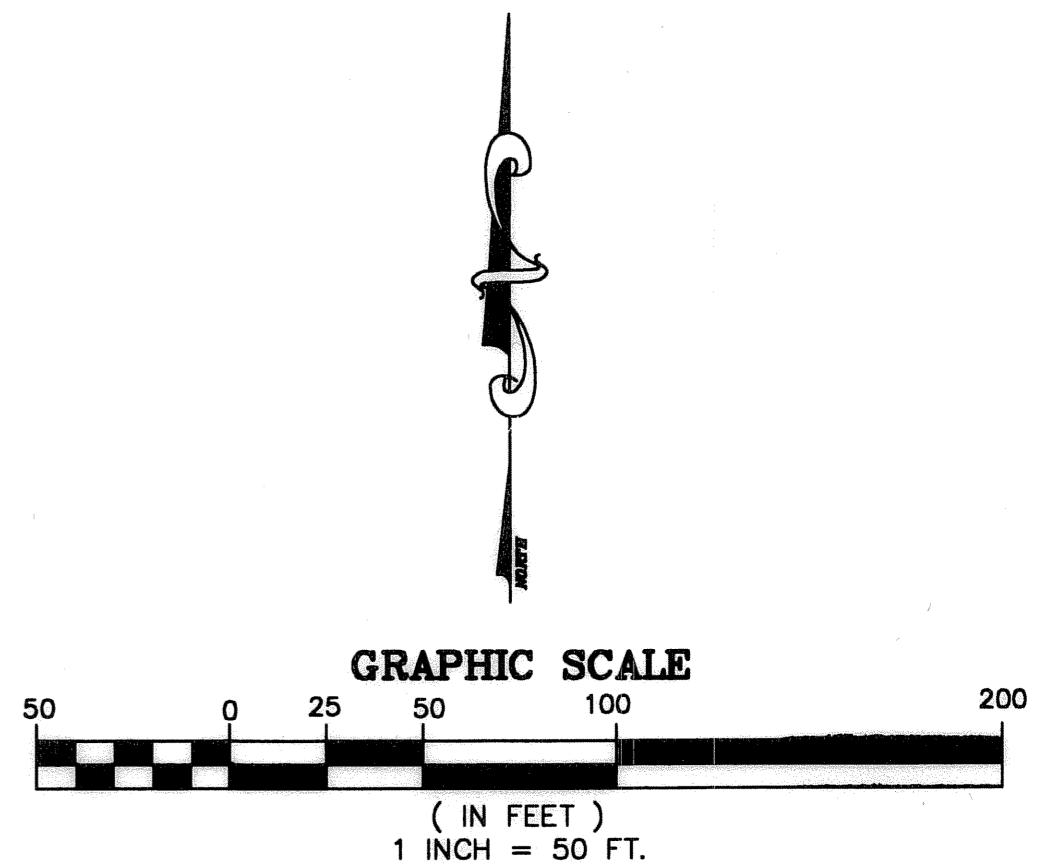
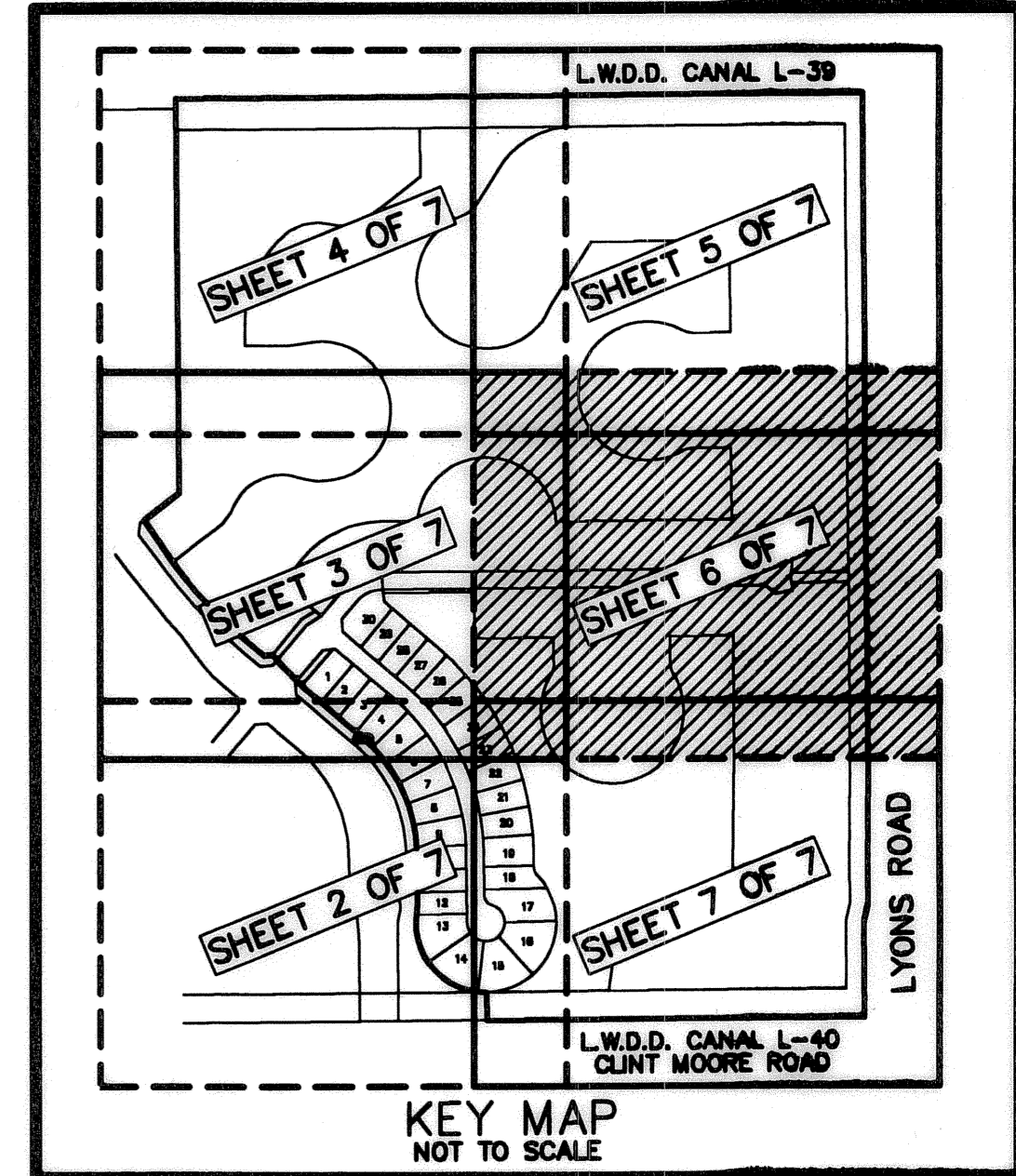
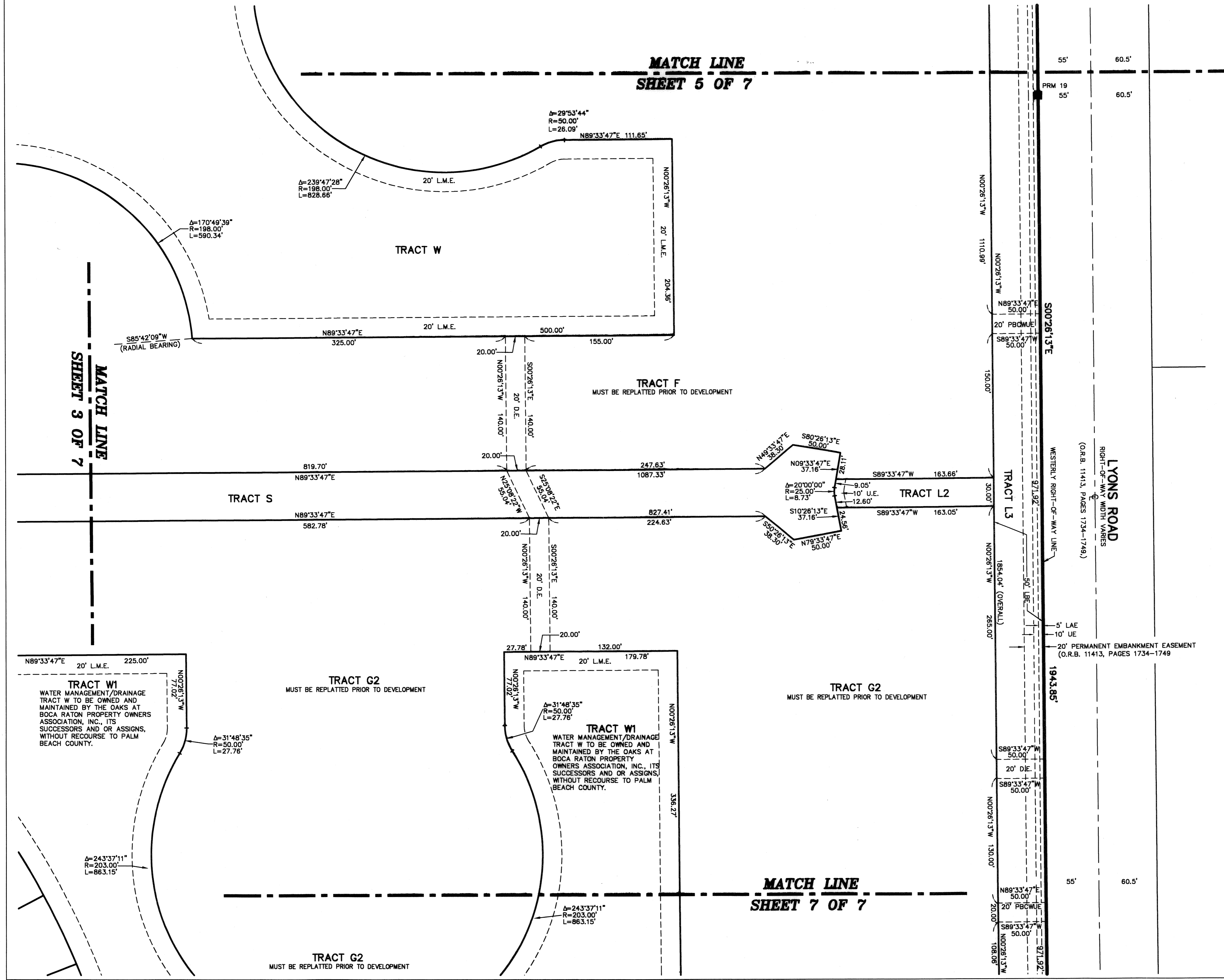
62

STATE OF FLORIDA
COUNTY OF PALM BEACH
THIS PLAT WAS FILED FOR
RECORD AT _____ M.
THIS _____ DAY OF _____
A.D. 2004 AND DULY RECORDED
IN PLAT BOOK _____ ON
PAGES _____ AND _____

DOROTHY H. WILKEN
CLERK CIRCUIT COURT

BY: _____
DEPUTY CLERK

SHEET 6 OF 7



NOTES
COORDINATES, BEARINGS AND DISTANCES

COORDINATES SHOWN ARE GRID
DATUM = NAD 83 1990 ADJUSTMENT
ZONE = FLORIDA EAST
LINEAR UNIT = US SURVEY FEET
COORDINATE SYSTEM 1983 STATE PLANE
TRANSVERSE MERCATOR PROJECTION
ALL DISTANCES ARE GROUND
SCALE FACTOR = 1.0002099
GROUND DISTANCE X SCALE FACTOR = GRID DISTANCE
BEARINGS AS SHOWN HEREON ARE GRID DATUM, NAD 83 1990
ADJUSTMENT, FLORIDA EAST ZONE.

SUBDIVISION OAKS AT BOCA RATON PLAT 6
BOOK 109 PAGE 62
FLOOD MAP # 215 A
ZONING PUD
QUAD # 52
SE
TAZ 890
PUD NAME Rainbow

MATCH LINE
SHEET 3 OF 7

MATCH LINE
SHEET 5 OF 7

MATCH LINE
SHEET 7 OF 7