

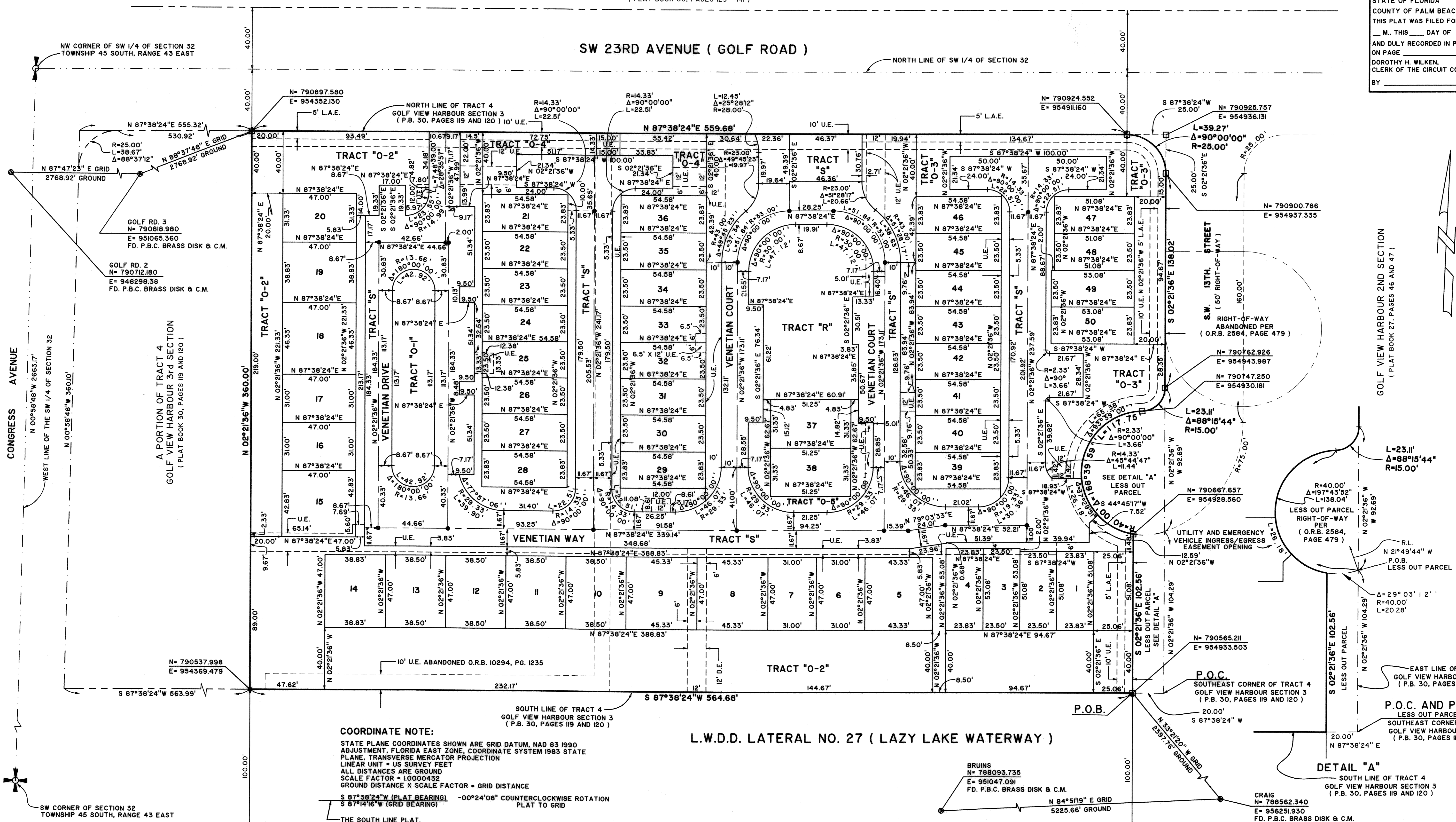
VENETIAN VILLAS

BEING A REPLAT OF A PORTION TRACT 4, GOLF VIEW HARBOUR 3rd SECTION AS RECORDED IN PLAT BOOK 30, PAGES 119 AND 120, PUBLIC RECORDS OF PALM BEACH COUNTY, FLORIDA AND LYING IN SECTION 32, TOWNSHIP 45 SOUTH, RANGE 43 EAST, CITY OF BOYNTON BEACH, PALM BEACH COUNTY, FLORIDA. OCTOBER 2004 SHEET 2 OF 2

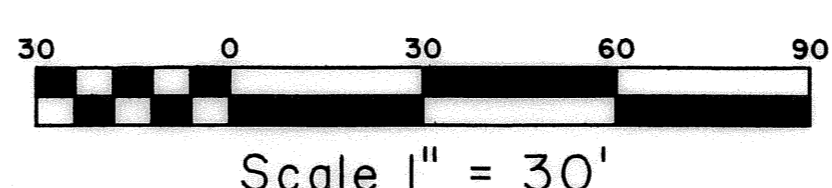
LEISUREVILLE TENTH SECTION (PLAT BOOK 30, PAGES 129 - 141)

SW 23RD AVENUE (GOLF ROAD)

STATE OF FLORIDA
COUNTY OF PALM BEACH
THIS PLAT WAS FILED FOR RECORD AT
M. THIS DAY OF 2004
AND DULY RECORDED IN PLAT BOOK NO.
ON PAGE
DOROTHY H. WILKEN,
CLERK OF THE CIRCUIT COURT
BY _____ D.C.



COORDINATE NOTE:
STATE PLANE COORDINATES SHOWN ARE GRID DATUM, NAD 83 1990 ADJUSTMENT, FLORIDA EAST ZONE, COORDINATE SYSTEM 1983 STATE PLANE, TRANSVERSE MERCATOR PROJECTION
LINEAR UNIT = US SURVEY FEET
ALL DISTANCES ARE GROUND
SCALE FACTOR = 1.0000432
GROUND DISTANCE X SCALE FACTOR = GRID DISTANCE
S 87°38'24"W (PLAT BEARING) -0°02'41"08" COUNTERCLOCKWISE ROTATION PLAT TO GRID
S 87°14'16"W (GRID BEARING)
- THE SOUTH LINE PLAT.



Landmark Surveying & Mapping Inc.
1850 Forest Hill Boulevard
Ph. (561) 433-5405 Suite 100 W.P.B. Florida
LB # 4396

VENETIAN VILLAS