

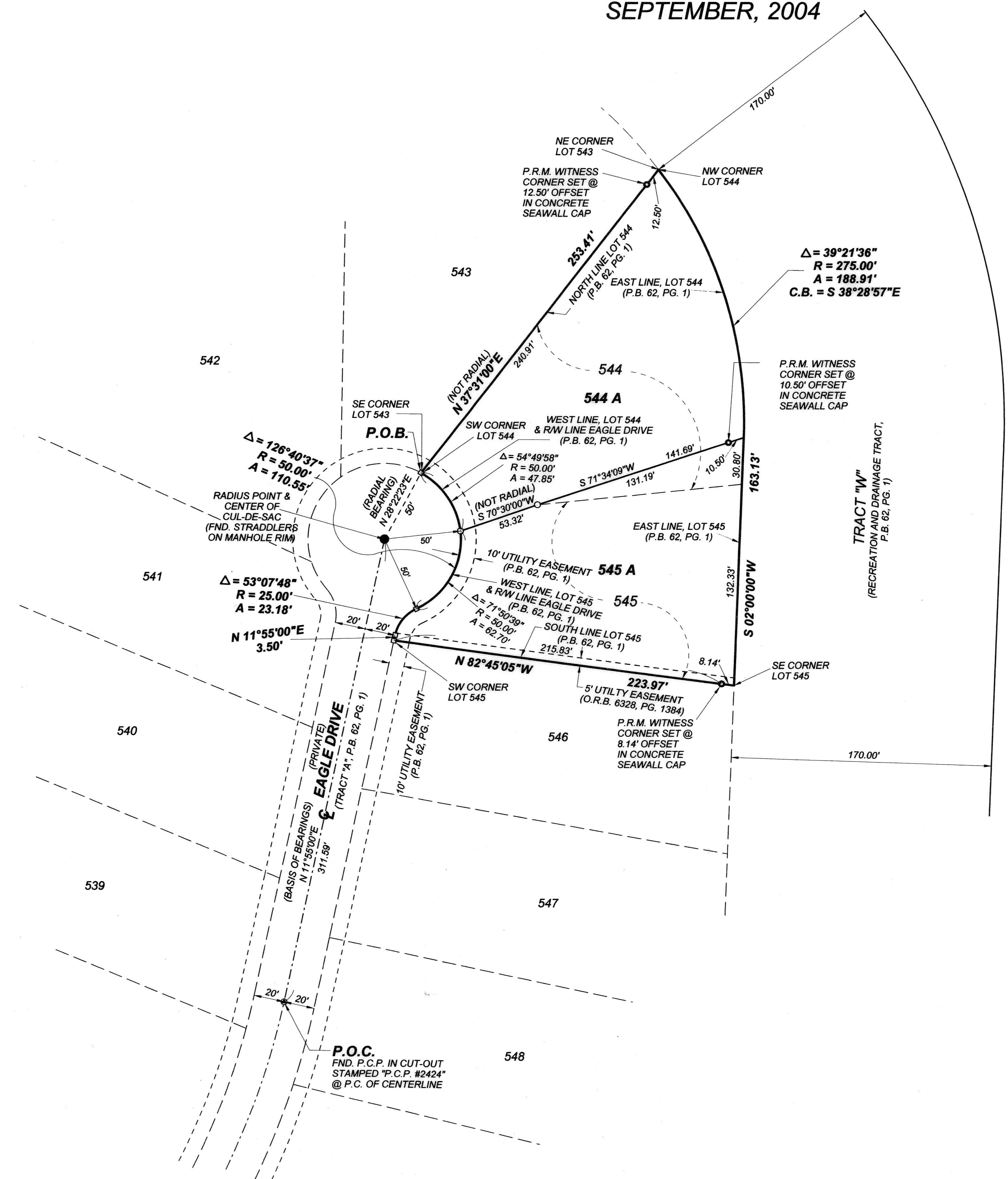
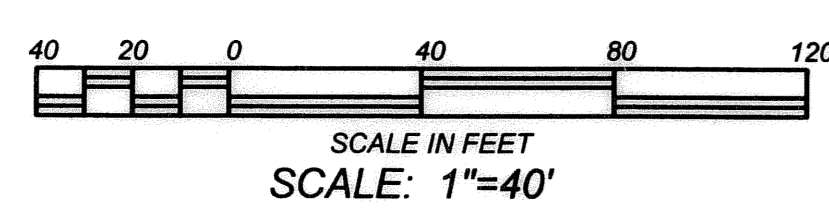
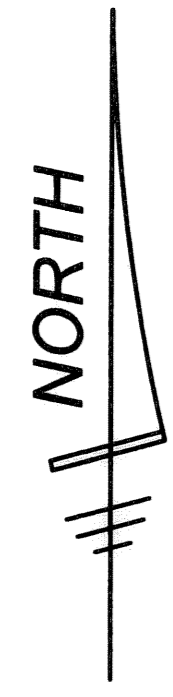
86

ADMIRAL'S COVE PARCEL "E" REPLAT No. 1

BEING A REPLAT OF LOTS 544 AND 545, ACCORDING TO THE PLAT OF PARCEL "E" AT ADMIRAL'S COVE, AS RECORDED IN PLAT BOOK 62, PAGE 1, PUBLIC RECORDS OF PALM BEACH COUNTY, FLORIDA, LYING IN SECTION 18, TOWNSHIP 41 SOUTH, RANGE 43 EAST, TOWN OF JUPITER, PALM BEACH COUNTY, FLORIDA.

SEPTEMBER, 2004

SHEET 2 OF 2



ABBREVIATIONS & SYMBOLS

- 1. = Denotes set 4" x 4" Concrete Permanent Reference Monuments (P.R.M.'s). Stamped P.R.M. LS # 3357.
- 2. = Denotes set Mag Nail & Disk Permanent Reference Monument (P.R.M.) Stamped P.R.M. LS #3357.
- 3. = Centerline.
- 4. = Right of Way
- 5. = Plat Book.
- 6. = Utility Easement.
- 7. = Drainage Easement.
- 8. = Arc Length.
- 9. = Central Angle.
- 10. = Radius.
- 11. = Chord Bearing.
- 12. = Official Record Book.
- 13. = Point of Commencement.
- 14. = Point of Beginning.
- 15. = Palm Beach County.
- 16. = Found.
- 17. = Point of Curvature
- 18. = Set 5/8" Steel Rod and Plastic Cap, stamped "WALLACE, LB 4569"

ADMIRAL'S COVE PARCEL "E" REPLAT No. 1



FIELD:	JOB No.: 03-1153 "H"	F.B.:	PG.:
OFFICE: R.C.	DATE: MAY, 2004	DWG. No.:	03-1153-3
C'K'D:	REF: 03-1153P.ZAK	SHEET	2 OF 2