

94

BARCLAY SQUARE REPLAT

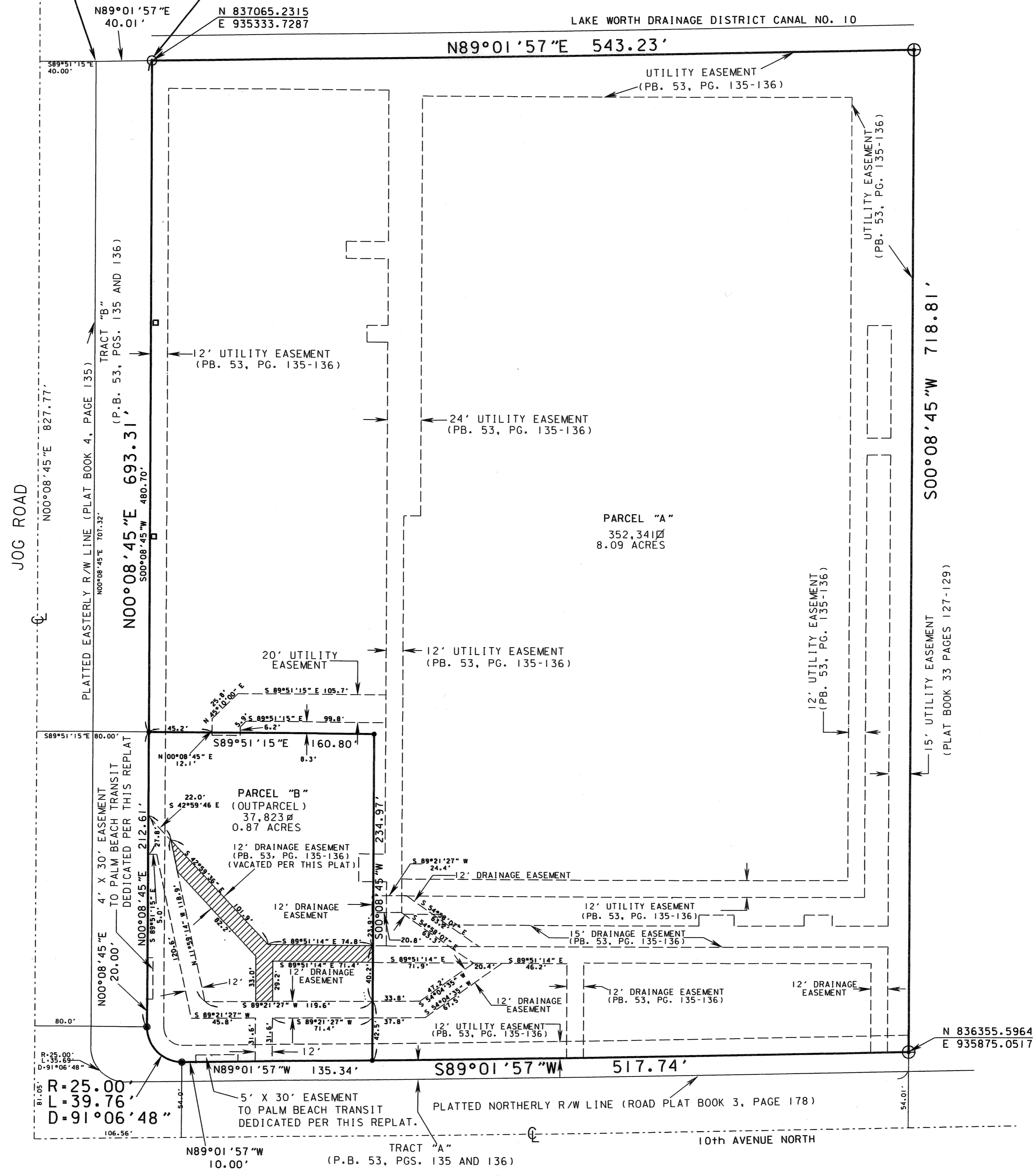
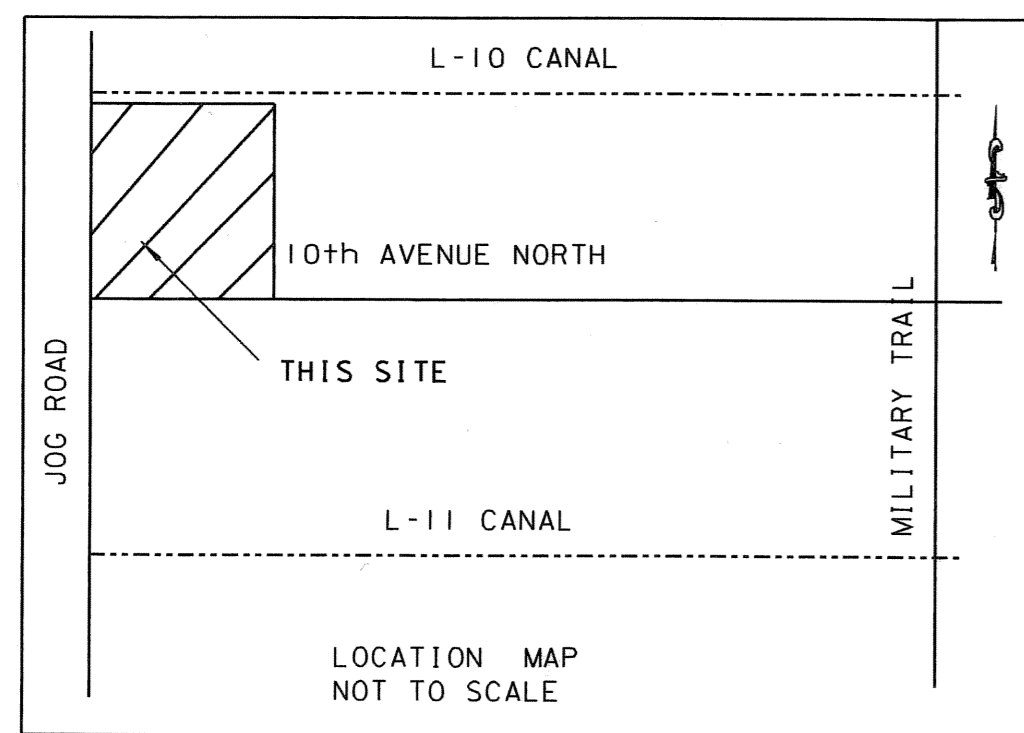
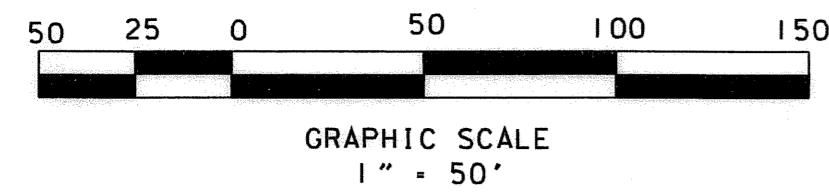
A REPLAT OF A PORTION OF THE PLAT OF "BARCLAY SQUARE", PLAT BOOK 53, PAGES 135 AND 136 OF THE PUBLIC RECORDS OF PALM BEACH COUNTY, FLORIDA LYING IN THE NORTHEAST ONE-QUARTER OF SECTION 22, TOWNSHIP 44 SOUTH, RANGE 42 EAST CITY OF GREENACRES, PALM BEACH COUNTY, FLORIDA SHEET 2 OF 2 SHEETS NOVEMBER, 2004

POC

NORTHWEST CORNER OF THE PLAT OF "BARCLAY SQUARE", PLAT BOOK 53, PAGES 135 AND 136, AS RECORDED IN THE PUBLIC RECORDS OF PALM BEACH COUNTY, FLORIDA.

POB

FND P.R.M. # 5709
N 837065.2315
E 935333.7287



SURVEYOR'S NOTES:

1. R INDICATES RADIUS
2. L INDICATES LENGTH
3. D INDICATES DELTA
4. FND INDICATES FOUND
5. P.B., PG. INDICATES PLAT BOOK AND PAGE.
6. P.B.C.R. INDICATES PALM BEACH COUNTY RECORDS.
7. R/W INDICATES RIGHT-OF-WAY LINE.
8. SEC INDICATES SECTION
9. \odot INDICATES PERMANENT REFERENCE MONUMENT (P. R. M.) FOUND BRASS DISK IN 5" DIAMETER CONCRETE MONUMENT, PROFESSIONAL LAND SURVEYOR (P. L. S.) #5709.
10. \circ INDICATES SET PERMANENT CONTROL POINT (P.C.P.) (P.S.M. #5709).
11. \oplus INDICATES SET PERMANENT REFERENCE MONUMENT (P.R.M.)
12. \square INDICATES SQUARE FEET.
13. POC INDICATES POINT OF COMMENCEMENT
14. POB INDICATES POINT OF BEGINNING
15. N 698789.901
E 431580.632 INDICATES STATE PLANE COORDINATE VALUE.
16. BEARING REFERENCE IS THE CENTERLINE OF 10TH AVENUE NORTH AS BEING NORTH 89°01'57" EAST, AS RECORDED IN PLAT BOOK 53, PAGE 135 AND 136 OF THE PUBLIC RECORDS OF PALM BEACH COUNTY, FLORIDA.

ConsulTech
3141 COMMERCE PARKWAY
MIRAMAR, FLORIDA 33025
TELEPHONE: (954) 438-4300
FAX: (954) 438-1433
L.B. NO. 7121

CONSUL-TECH SURVEYING & MAPPING, INC.