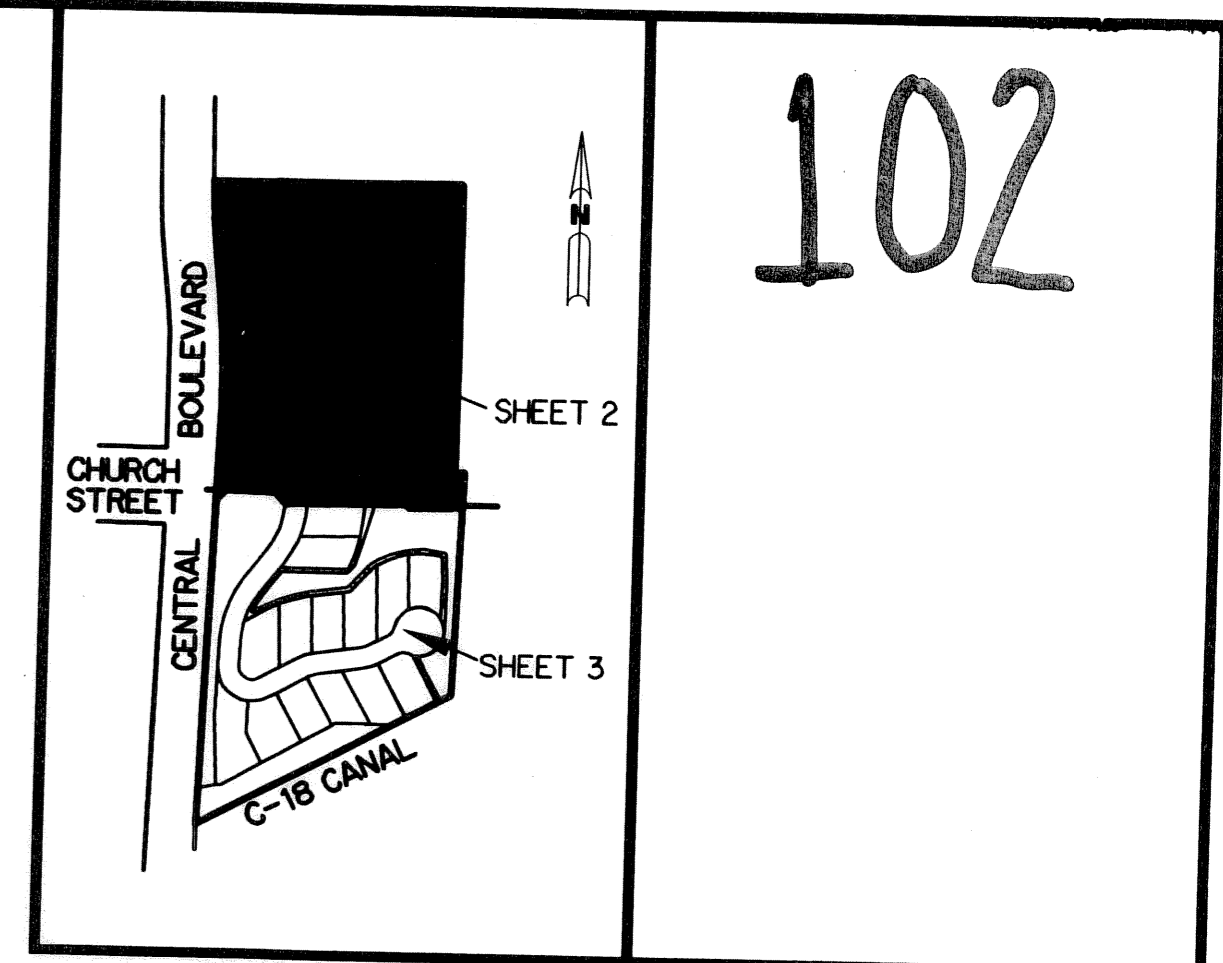


SHORES POINTE

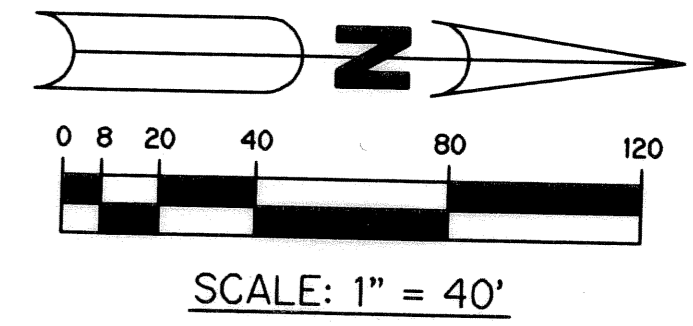
BEING A REPLAT OF A PORTION OF THE PLAT OF LOXAHATCHEE GARDEN FARMS AS RECORDED IN PLAT BOOK 2, PAGE 68 OF THE PUBLIC RECORDS OF PALM BEACH COUNTY, FLORIDA. LYING IN SECTION 34, TOWNSHIP 40 SOUTH, RANGE 42 EAST, TOGETHER WITH A PORTION OF THE NORTHEAST ONE-QUARTER OF SECTION 3, TOWNSHIP 41 SOUTH, RANGE 42 EAST, TOWN OF JUPITER, PALM BEACH COUNTY, FLORIDA

SHEET 2 OF 3 AUGUST, 2004



102

KEY MAP
N.T.S.



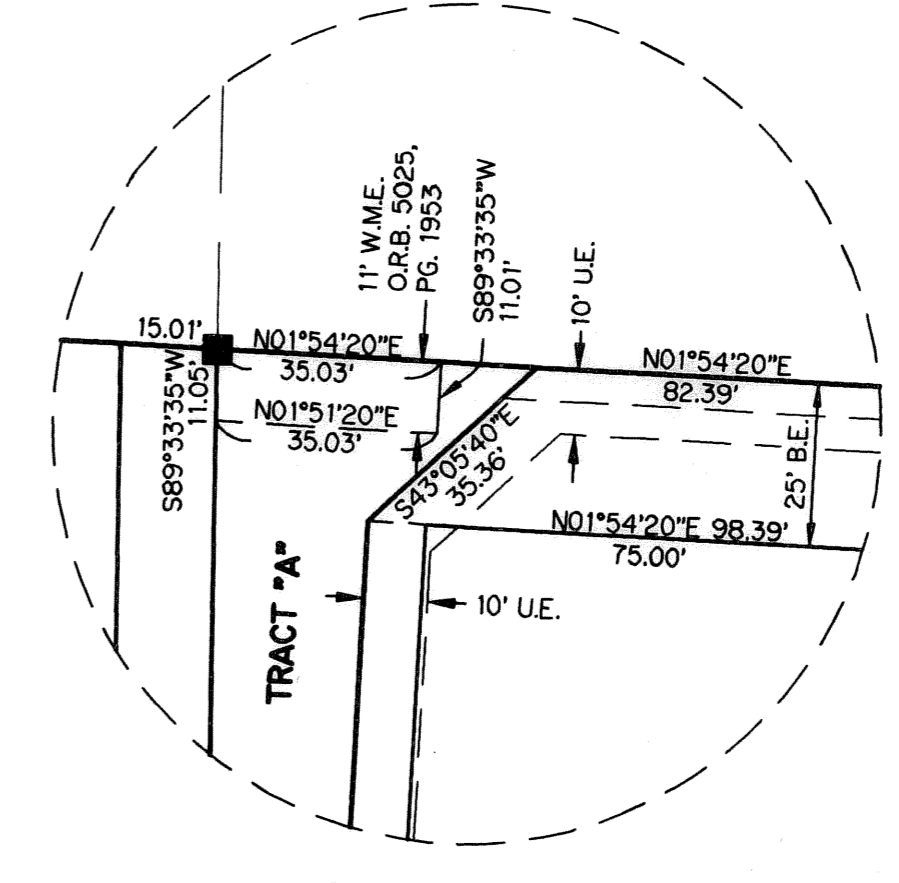
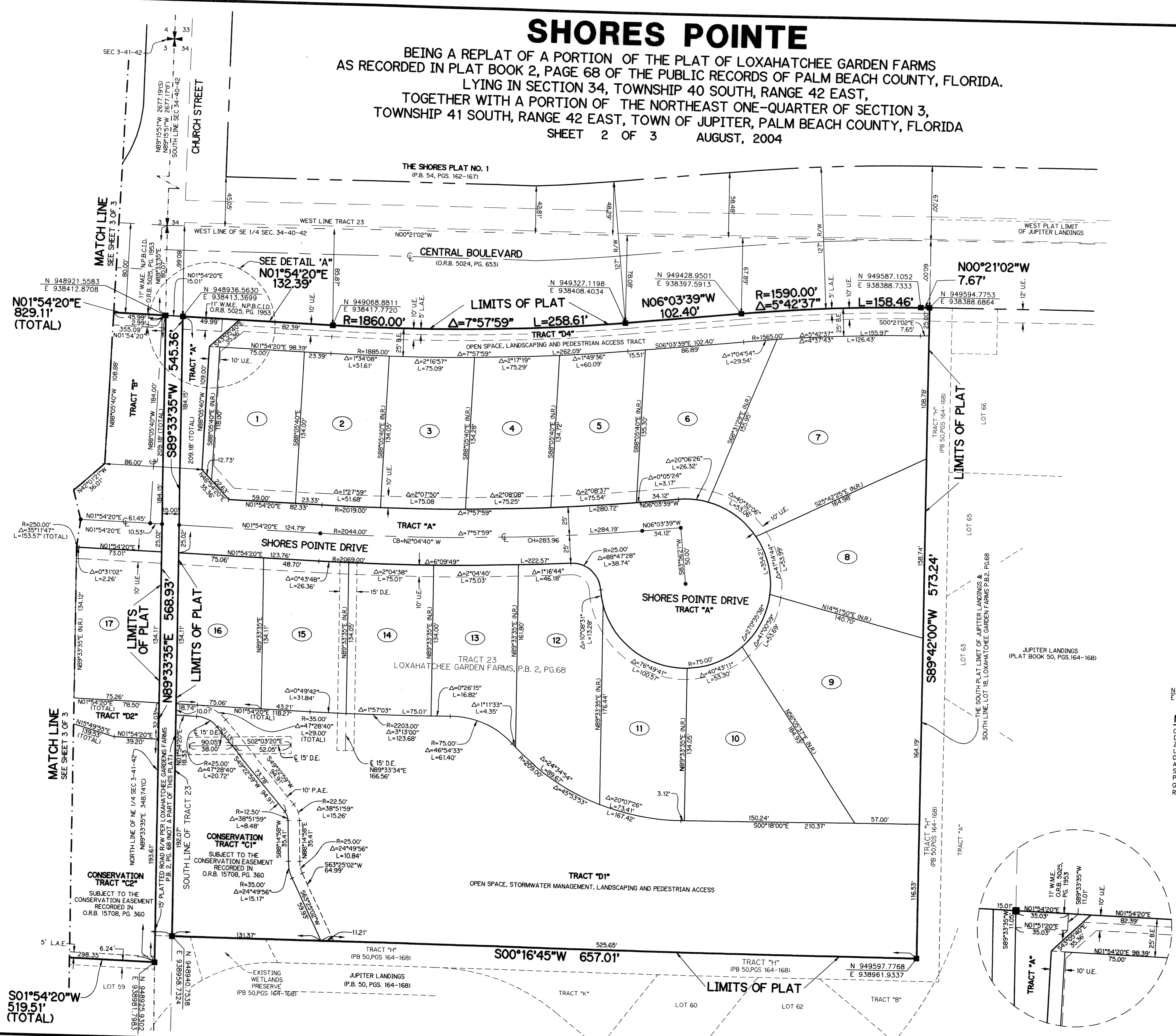
LEGEND:

- - SET PERMANENT REFERENCE MONUMENT, L.B. #6674
- - FOUND PERMANENT REFERENCE MONUMENT, L.B. #6674
- - SET PERMANENT CONTROL POINT, L.B. #6674
- △ - FOUND PERMANENT CONTROL POINT, L.B. #6674
- Δ - DELTA ANGLE
- B.E. - BUFFER EASEMENT
- (C) - CALCULATED
- CH - CHORD BEARING
- CD - CHORD DISTANCE
- (E) - CENTERLINE
- (D) - AS PER DEED
- D.B. - DEED BOOK
- D.E. - DRAINAGE EASEMENT
- L - ARC LENGTH
- L.A.E. - LIMITED ACCESS EASEMENT
- N.P.B.C.I.D. - NORTHERN PALM BEACH COUNTY IMPROVEMENT DISTRICT
- NR - NOT RADIAL
- NTS - NOT TO SCALE
- O.R.B. - OFFICIAL RECORD BOOK
- P.A.E. - PUBLIC ACCESS EASEMENT
- P.B. - PLAT BOOK
- PGS. - PAGES
- P.S.M. - PROFESSIONAL SURVEYOR AND MAPPER
- R - RADIUS
- RAD. - RADIAL
- R/W - RIGHT-OF-WAY
- S.F.W.M.D. - SOUTH FLORIDA WATER MANAGEMENT DISTRICT
- S.T. - SURVEY TIE
- U.E. - UTILITY EASEMENT
- W.M.E. - WATER MANAGEMENT EASEMENT (O.R.B. 5025, PG. 1953)

N 948406.7040
E 938964.5018 - DENOTES STATE PLANE COORDINATES

NOTE:
COORDINATES SHOWN ARE GRID COORDINATES
DATUM = NAD 83 (1990 ADJUSTMENT)
ZONE = FLORIDA EAST ZONE
LINEAR UNIT = U.S. SURVEY FEET
COORDINATE SYSTEM = 1983 STATE PLANE TRANSVERSE MERCATOR PROJECTION
ALL DISTANCES ARE GROUND
SCALE FACTOR = 1.0000265
PLAT BEARING = N01°54'20" E
GRID BEARING = N01°54'18" E
ROTATION = 0°00'02"

THIS INSTRUMENT PREPARED BY
DAVID L. SMITH, P.S.M. 4951, STATE OF FLORIDA
LAWSON, NOBLE AND WEBB, INC.
ENGINEERS PLANNERS SURVEYORS
420 COLUMBIA DRIVE, SUITE 110
WEST PALM BEACH, FLORIDA 33409
LB 6674



DETAIL "A"
NOT TO SCALE