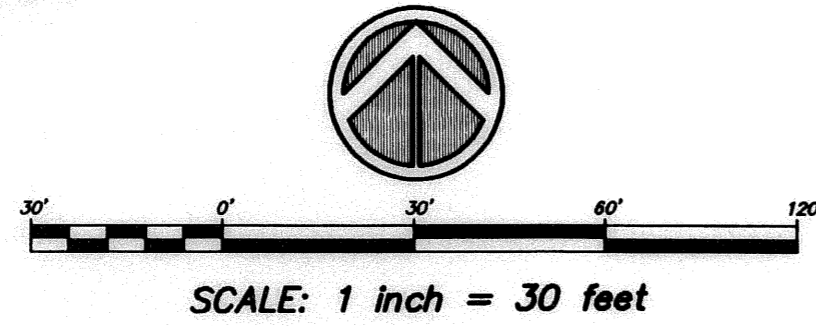


PLAT NOTES:

1. THIS PLAT, AS RECORDED IN ITS GRAPHIC FORM IS THE OFFICIAL DEPICTION OF THE SUBDIVIDED LANDS DESCRIBED HEREIN AND WILL IN NO CIRCUMSTANCES BE SUPPLANTED IN AUTHORITY BY ANY OTHER GRAPHIC OR DIGITAL FORM OF THE PLAT. THERE MAY BE ADDITIONAL RESTRICTIONS THAT ARE NOT RECORDED ON THIS PLAT THAT MAY BE FOUND IN THE PUBLIC RECORDS OF THIS COUNTY.
2. GROSS AREA OF PLATTED LANDS IS 167,376 SQ.FT. (3.824 ACRES), MORE OR LESS.
3. NO BUILDINGS OR STRUCTURES SHALL BE PLACED WITHIN EASEMENTS.
4. BEARINGS SHOWN HEREON ARE ASSUMED AND REFER TO THE EAST LINE OF PARCEL 3B, BOYNTON COMMERCE CENTER, (P.B. 46, PAGES 126 & 127, P.B.C.R.), HAVING A BEARING OF S20°00'15"W.



THE PLAZA AT BOYNTON

A PORTION OF PARCEL 3B, "BOYNTON COMMERCE CENTER" (PLAT BOOK 46, PAGES 126-127, PALM BEACH COUNTY RECORDS), LYING IN SECTION 32, TOWNSHIP 45 SOUTH, RANGE 43 EAST
CITY OF BOYNTON BEACH, PALM BEACH COUNTY, FLORIDA
(JUNE, 2004)

SHEET 2 OF 2 SHEETS

PLAT BOOK
PAGE 127

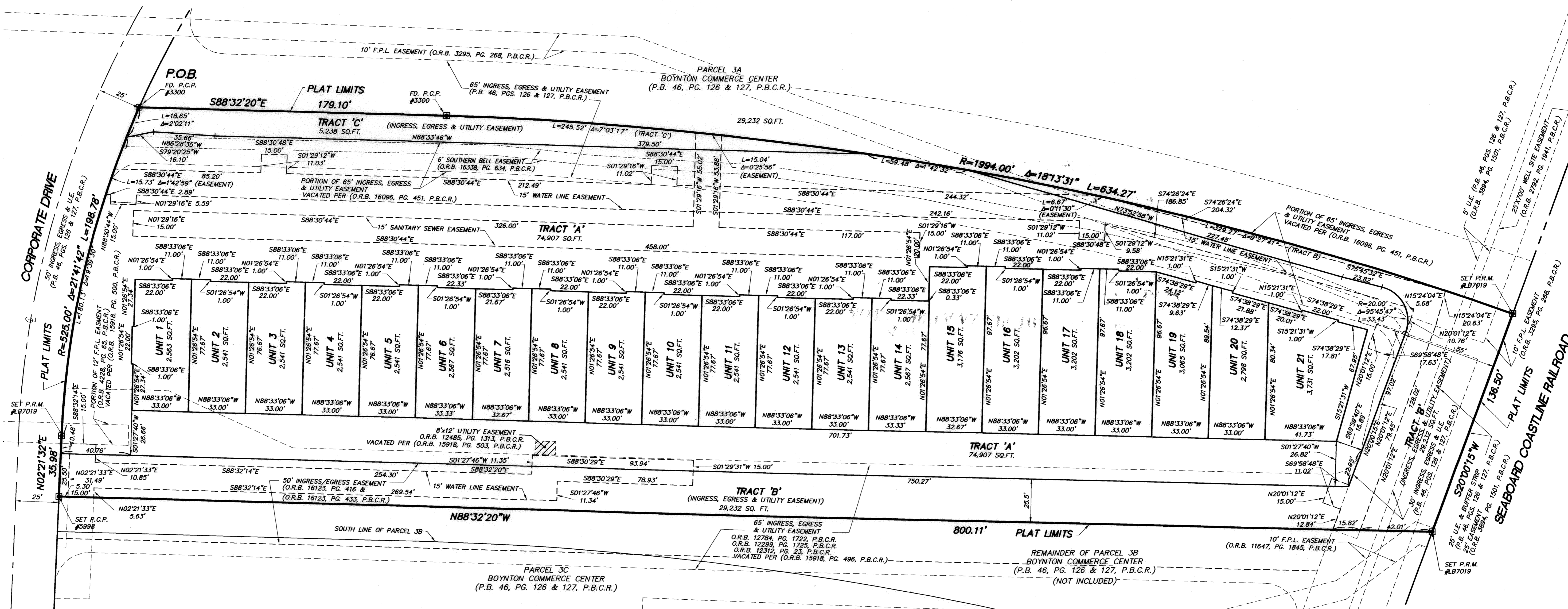
- LEGEND:**
- P.B.C.R. = PALM BEACH COUNTY RECORDS
 - O.R.B. = OFFICIAL RECORDS BOOK
 - ℄ = CENTERLINE
 - P.R.M. = PERMANENT REFERENCE MONUMENT (4" x 4" CONCRETE MONUMENT & CAP LB # 7019)
 - P.C.P. = PERMANENT CONTROL POINT (NAIL & DISC LB # 7019)
 - No. = NUMBER
 - PG. = PAGE
 - P.B. = PLAT BOOK
 - |- = BREAK IN LINE SCALE
 - S.F. = SQUARE FEET
 - U.E. = UTILITY EASEMENT
 - R = RADIUS
 - Δ = CENTRAL ANGLE
 - L = ARC LENGTH
 - F.P.L. = FLORIDA POWER AND LIGHT
 - P.O.B. = POINT OF BEGINNING

TABULATION

PARCEL	AREA (SQUARE FEET)	AREA (ACRES)
TRACT 'A'	74,907	1.720
TRACT 'B'	29,232	0.671
TRACT 'C'	5,238	0.120
UNITS 1-21	57,999	1.331
TOTAL	167,376	3.842

*INCLUDES THE FOLLOWING AREAS (SQUARE FEET)

INTERIOR GROUND FLOOR	57,102
EXTERIOR COVERED AREA	627
EXTERIOR STRUCTURAL FEATURES	270



RECORD PLAT PREPARED BY:

SUN TECH Sun-Tech Engineering, Inc.
Engineers - Planners - Surveyors
Certificate of Authorization Number LB 7019

1600 West Oakland Park Boulevard Phone (954)777-3123
FL Lauderdale, FL 33311 Fax (954)777-3114
E-Mail: suntech@suntech.com