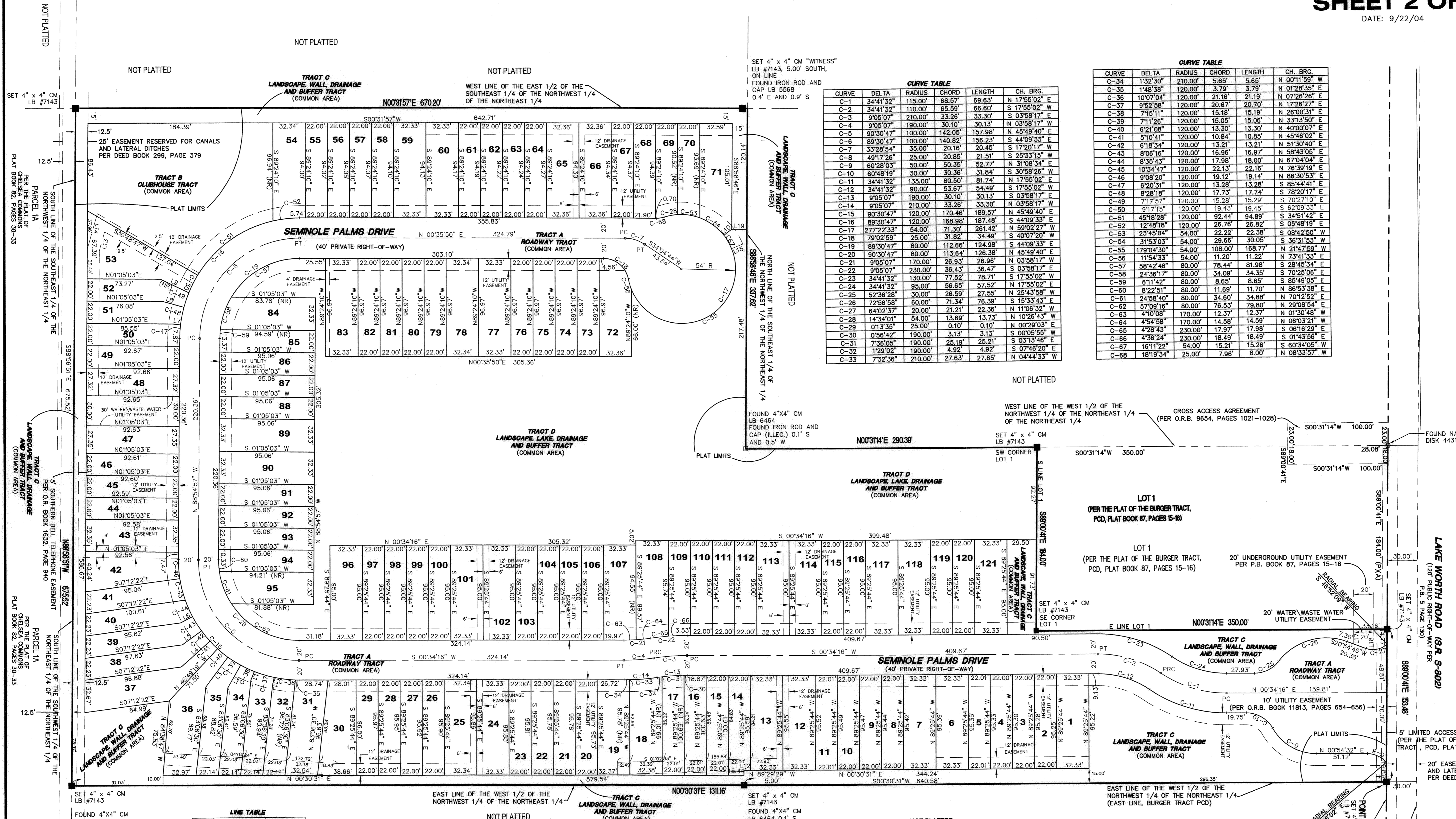


SEMINOLE PALMS TWO

A REPLAT OF SEMINOLE PALMS, PLAT BOOK 102, PAGES 103-104, PALM BEACH COUNTY RECORDS LYING WITHIN SECTION 27, TOWNSHIP 44 SOUTH-RANGE 42 EAST CITY OF GREENACRES, PALM BEACH COUNTY, FLORIDA

SHEET 2 OF 2
DATE: 9/22/04

COUNTY OF PALM BEACH)
STATE OF FLORIDA) SS
This Plat was filed for record at
this _____ day of _____, 2004
and duly recorded in Plat Book _____
on Page _____
DOROTHY WILKINS
Clerk of the Circuit Court
by _____ D.C.



CURVE TABLE

CURVE	DELTA	RADIUS	CHORD	LENGTH	CH. BRG.
C-1	34°41'32"	115.00'	68.57'	69.63'	N 17°55'02" E
C-2	34°41'32"	110.00'	65.59'	66.60'	S 17°55'02" W
C-3	9°05'07"	210.00'	133.26'	33.30'	S 03°58'17" E
C-4	9°05'07"	190.00'	120.00'	30.13'	N 03°58'17" W
C-5	90°30'47"	100.00'	142.05'	157.98'	N 45°49'40" E
C-6	89°30'47"	100.00'	140.82'	156.23'	S 44°09'33" E
C-7	33°28'54"	35.00'	20.16'	20.45'	S 17°20'17" W
C-8	49°17'26"	25.00'	20.85'	21.51'	S 25°33'15" W
C-9	60°28'03"	50.00'	50.35'	52.77'	N 31°08'34" E
C-10	60°28'03"	30.00'	30.36'	31.84'	S 30°58'26" W
C-11	34°41'32"	135.00'	80.50'	81.74'	N 17°55'02" E
C-12	34°41'32"	90.00'	53.67'	54.49'	N 17°55'02" W
C-13	9°05'07"	190.00'	130.10'	30.13'	S 03°58'17" E
C-14	9°05'07"	210.00'	132.26'	33.30'	S 03°58'17" W
C-15	90°30'47"	120.00'	170.46'	189.57'	N 45°49'40" E
C-16	89°30'47"	120.00'	168.98'	187.48'	S 44°09'33" E
C-17	27°22'33"	54.00'	71.30'	26.42'	S 44°09'33" W
C-18	79°22'59"	25.00'	31.82'	34.48'	S 40°07'20" W
C-19	89°30'47"	80.00'	112.66'	124.98'	N 45°49'40" E
C-20	90°30'47"	80.00'	113.64'	126.36'	N 45°49'40" E
C-21	9°05'07"	170.00'	106.93'	28.93'	N 03°58'17" W
C-22	9°05'07"	230.00'	143.43'	36.47'	S 03°58'17" E
C-23	34°41'32"	130.00'	77.52'	78.71'	S 17°55'02" W
C-24	34°41'32"	95.00'	58.65'	57.82'	N 17°55'02" E
C-25	52°36'58"	80.00'	26.59'	27.55'	N 25°43'58" W
C-26	72°56'58"	80.00'	71.34'	76.39'	S 15°33'43" E
C-27	64°02'37"	20.00'	21.21'	22.36'	N 11°06'32" W
C-28	14°34'01"	54.00'	13.69'	13.73'	N 02°26'43" W
C-29	01°35'36"	25.00'	0.10'	0.10'	N 00°29'03" W
C-30	05°46'42"	190.00'	3.13'	3.13'	S 00°05'55" W
C-31	73°06'05"	190.00'	25.19'	26.21'	S 03°13'46" E
C-32	129°02'02"	190.00'	4.92'	4.92'	S 07°46'20" E
C-33	73°32'36"	210.00'	27.63'	27.85'	N 04°44'33" W

CURVE TABLE

CURVE	DELTA	RADIUS	CHORD	LENGTH	CH. BRG.
C-34	1°32'30"	210.00'	5.65'	5.65'	N 00°11'59" W
C-35	1°48'38"	120.00'	3.79'	3.79'	N 01°28'35" E
C-36	10°07'04"	120.00'	21.16'	21.19'	N 07°28'26" E
C-37	9°22'58"	120.00'	20.67'	20.70'	N 17°28'27" E
C-38	7°15'11"	120.00'	15.18'	15.19'	N 26°00'31" E
C-39	7°11'26"	120.00'	15.05'	15.06'	N 33°13'50" E
C-40	6°21'08"	120.00'	13.30'	13.30'	N 40°00'07" E
C-41	5°10'41"	120.00'	10.84'	10.85'	N 45°46'02" E
C-42	6°19'34"	120.00'	13.21'	13.21'	N 51°30'40" E
C-43	8°06'16"	120.00'	16.96'	16.97'	N 58°43'05" E
C-44	8°35'43"	120.00'	17.98'	18.00'	N 67°04'04" E
C-45	10°34'47"	120.00'	22.13'	22.16'	N 76°39'19" E
C-46	9°08'20"	120.00'	19.12'	19.14'	N 86°30'53" E
C-47	6°20'31"	120.00'	13.28'	13.28'	S 85°44'41" E
C-48	8°28'18"	120.00'	17.73'	17.74'	S 28°20'17" E
C-49	7°17'57"	120.00'	15.28'	15.29'	S 70°27'10" E
C-50	9°17'15"	120.00'	19.43'	19.45'	S 62°09'33" E
C-51	45°18'28"	120.00'	92.44'	94.89'	S 34°51'42" E
C-52	12°48'18"	120.00'	26.78'	26.82'	S 05°48'19" E
C-53	23°45'04"	54.00'	22.22'	22.38'	S 08°42'50" W
C-54	31°53'03"	54.00'	29.66'	30.05'	S 36°31'53" W
C-55	179°04'30"	54.00'	108.00'	168.77'	N 21°47'59" W
C-56	11°54'53"	54.00'	11.20'	11.20'	N 73°41'33" E
C-57	58°42'48"	80.00'	78.44'	81.98'	S 28°45'34" E
C-58	24°36'17"	80.00'	34.09'	34.35'	S 70°25'06" E
C-59	6°11'42"	80.00'	8.65'	8.65'	S 85°49'05" E
C-60	8°22'51"	80.00'	11.69'	11.70'	N 86°53'38" E
C-61	24°58'40"	80.00'	34.60'	34.88'	N 70°12'52" E
C-62	57°09'16"	80.00'	76.53'	79.80'	N 28°08'54" E
C-63	4°10'08"	170.00'	12.37'	12.37'	N 01°30'48" W
C-64	4°54'58"	170.00'	14.58'	14.58'	N 08°03'21" W
C-65	4°28'43"	230.00'	17.97'	17.98'	S 08°16'29" E
C-66	4°36'24"	230.00'	18.49'	18.49'	S 01°43'56" E
C-67	16°11'22"	54.00'	15.21'	15.26'	S 60°34'05" W
C-68	18°19'34"	25.00'	7.96'	8.00'	N 08°33'57" W

Abbreviation Legend:

- C/L - CENTERLINE
- POB - POINT OF BEGINNING
- POC - POINT OF COMMENCEMENT
- ORB - OFFICIAL RECORDS BOOK
- NT - NON-TANGENT
- PC - POINT OF CURVATURE
- PCC - POINT OF COMPOUND CURVATURE
- PT - POINT OF TANGENCY
- INV - INVERT
- C - CHORD
- CB - CHORD BEARING
- (C) - CALCULATED
- (P) - PLAT
- (A) - ACTUAL
- (D) - DEED
- (TYP) - TYPICAL
- T44S - TOWNSHIP 44 SOUTH
- R42E - RANGE 42 EAST
- FDOT - FLORIDA DEPARTMENT OF TRANSPORTATION
- GOV'T - GOVERNMENT
- DEPT. - DEPARTMENT
- BLK - BLOCK
- APPROX - APPROXIMATE
- W/ - WITH
- FP&L - FLORIDA POWER AND LIGHT
- FND - FOUND
- IR - IRON ROD
- CONC. - CONCRETE
- IP - IRON PIPE
- IR&C - IRON REBAR & CAP
- N&D - NAIL & DISK
- LB - LICENSED BUSINESS
- R/W - RIGHT-OF-WAY
- PG - PAGE
- PB - PLAT BOOK
- COR - CORNER
- PGS - PAGES
- (NR) - NON-RADIAL

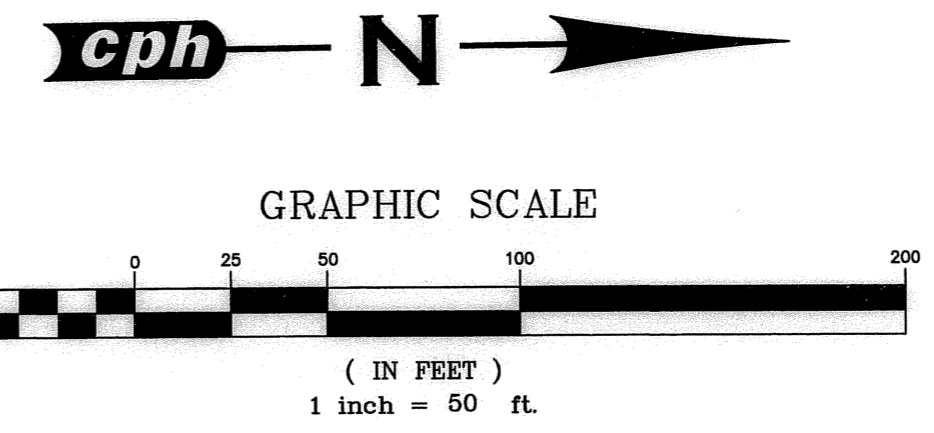
LINE TABLE

LINE	BEARING	DISTANCE
L1	S 67°37'04" E	9.38'
L2	S 60°21'53" E	26.29'
L3	S 53°10'27" E	37.42'
L4	S 41°38'37" E	38.75'
L5	S 35°20'03" E	23.76'
L6	S 27°13'47" E	13.69'
L7	S 07°28'34" W	7.91'
L8	S 15°53'52" W	21.31'
L9	S 25°42'51" W	31.09'
L10	N 37°31'36" W	9.92'
L11	S 77°30'02" E	8.49'
L12	S 00°30'31" W	6.56'
L13	N 73°20'07" W	19.52'
L14	S 73°20'07" E	33.98'
L15	N 21°04'39" W	12.00'
L16	N 01°01'14" E	14.70'
L17	N 89°29'46" W	14.49'
L18	N 89°29'46" W	20.29'
L19	N 01°01'14" E	15.00'

Notice:
This plat, as recorded in its graphic form, is the official depiction of the subdivided lands described herein and will in no circumstances be supplanted in authority by any other graphic or digital form of the plat. There may be additional restrictions that are not recorded on this plat that may be found in the public records of this county.

SURVEYOR'S NOTES:

- BEARINGS SHOWN HEREON ARE RELATIVE TO PLAT OF "THE BURGER TRACT, PCD", ACCORDING TO THE PLAT THEREOF AS RECORDED IN MAP BOOK 87, PAGES 15-16, OF THE OFFICIAL PUBLIC RECORDS OF PALM BEACH COUNTY, FLORIDA, WITH BEARING BEING N89°00'41" W ON THE NORTH LINE OF LOT 2.
- DENOTES A PERMANENT REFERENCE MONUMENT, SET 4" x 4" CM WITH A BRASS DISC MARKED "PRM LB 7143", UNLESS OTHERWISE NOTED.
- DENOTES A PERMANENT CONTROL POINT, SET 4" x 4" CM WITH A BRASS DISC MARKED "PCP LB 7143", UNLESS OTHERWISE NOTED.



AREA TABULATION:

TRACT A = 2.17 ACRES MORE OR LESS
TRACT B = 0.52 ACRES MORE OR LESS
TRACT C = 1.47 ACRES MORE OR LESS
TRACT D = 2.79 ACRES MORE OR LESS
LOTS 1-121 = 6.93 ACRES MORE OR LESS
TOTAL PLAT AREA = 13.88 ACRES MORE OR LESS

THIS INSTRUMENT PREPARED BY:
W. C. ELLIOTT, P.S.M.
FLORIDA REGISTRATION NO. 5599
CPL ENGINEERS, INC.
500 W. FULTON STREET
SANFORD, FLORIDA 32771
LICENSED BUSINESS NO. 7143

