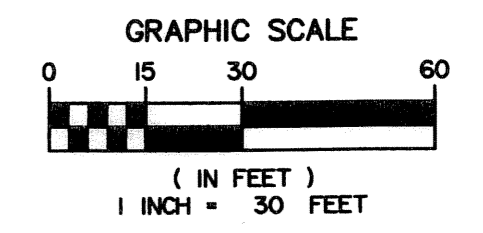
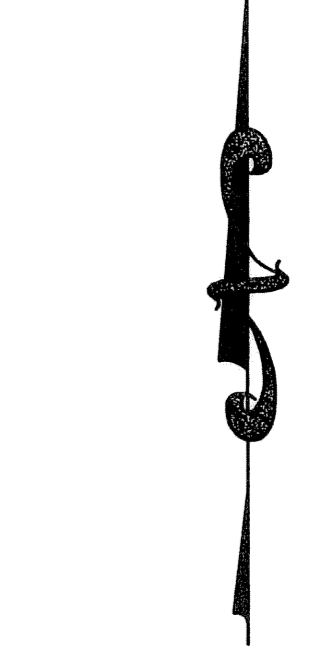
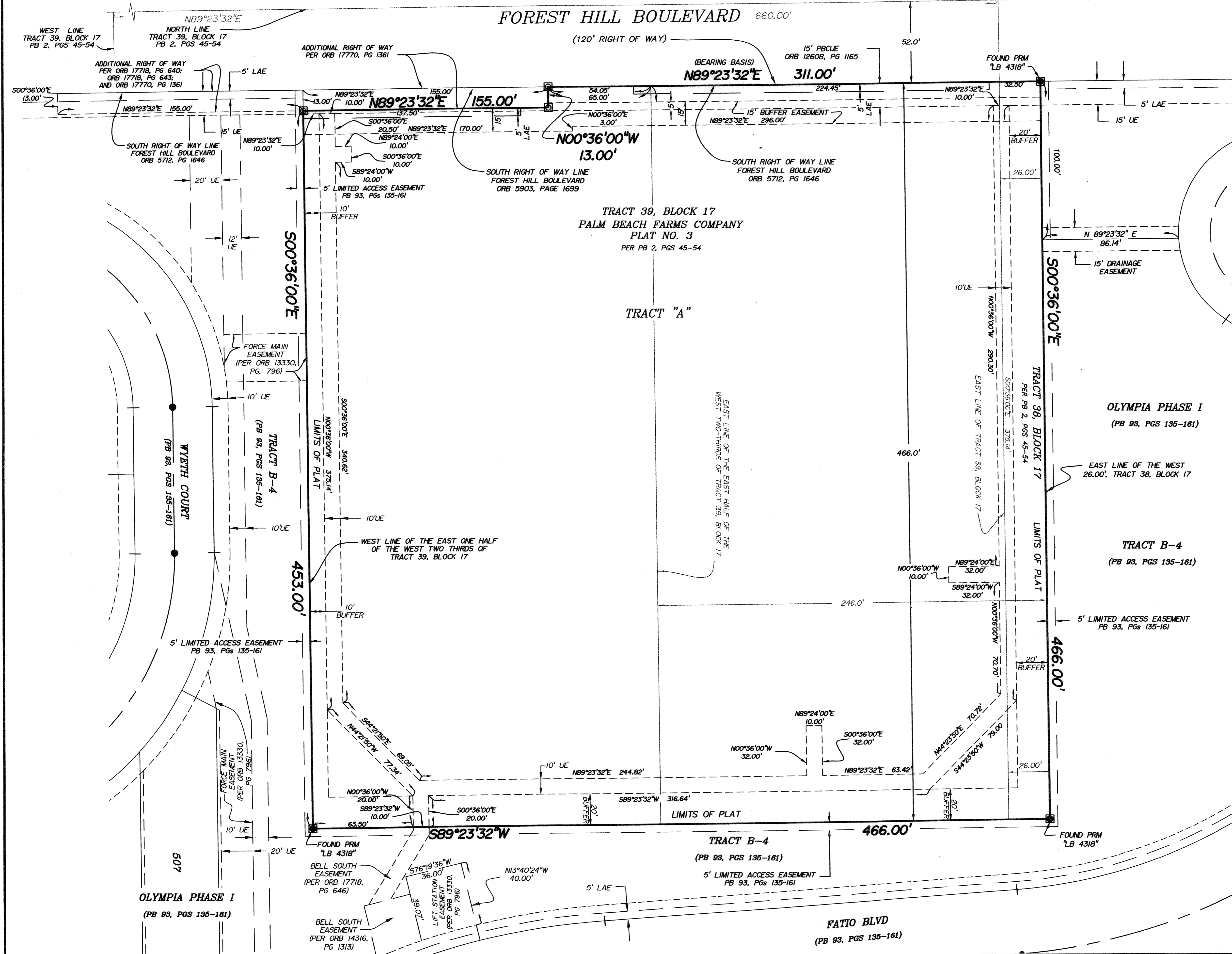


KOBOSKO'S CROSSING

BEING A REPLAT OF THE WEST 26.00 FEET OF TRACT 38, BLOCK 17 TOGETHER WITH THE EAST ONE-HALF OF THE WEST TWO-THIRDS OF TRACT 39, BLOCK 17 PALM BEACH FARMS COMPANY PLAT No. 3, PLAT BOOK 2, PAGES 45-54 SECTIONS 7 AND 18, TOWNSHIP 44 SOUTH, RANGE 42 EAST, VILLAGE OF WELLINGTON, PALM BEACH COUNTY, FLORIDA.

NOVEMBER 2004

SHEET 2 OF 2



- LEGEND**
- PRM = PERMANENT REFERENCE MONUMENT
 - UE = UTILITY EASEMENT
 - LAE = LIMITED ACCESS EASEMENT
 - PBCUE = PALM BEACH COUNTY UTILITY EASEMENT
 - PB = PLAT BOOK
 - PG(s) = PAGE(S)
 - ORB = OFFICIAL RECORDS BOOK
 - FPBL = FLORIDA POWER AND LIGHT
 - ☐ = SET PERMANENT REFERENCE MONUMENT "LB 6680" (UNLESS OTHERWISE NOTED)
 - ⊠ = FOUND PERMANENT REFERENCE MONUMENT

Engineers - Planners
Land Surveyors
Environmental
Professionals License
Business No. 6680

MILLER LEGG
& ASSOCIATES, INC.

2005 Vista Parkway
Suite 100
West Palm Beach
Florida 33411-2719
(561) 689-1138
Fax: (561) 689-8108