

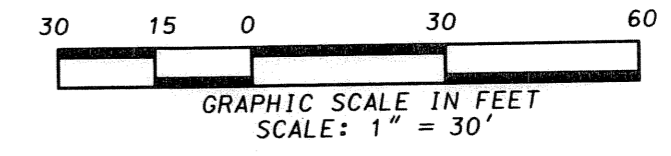
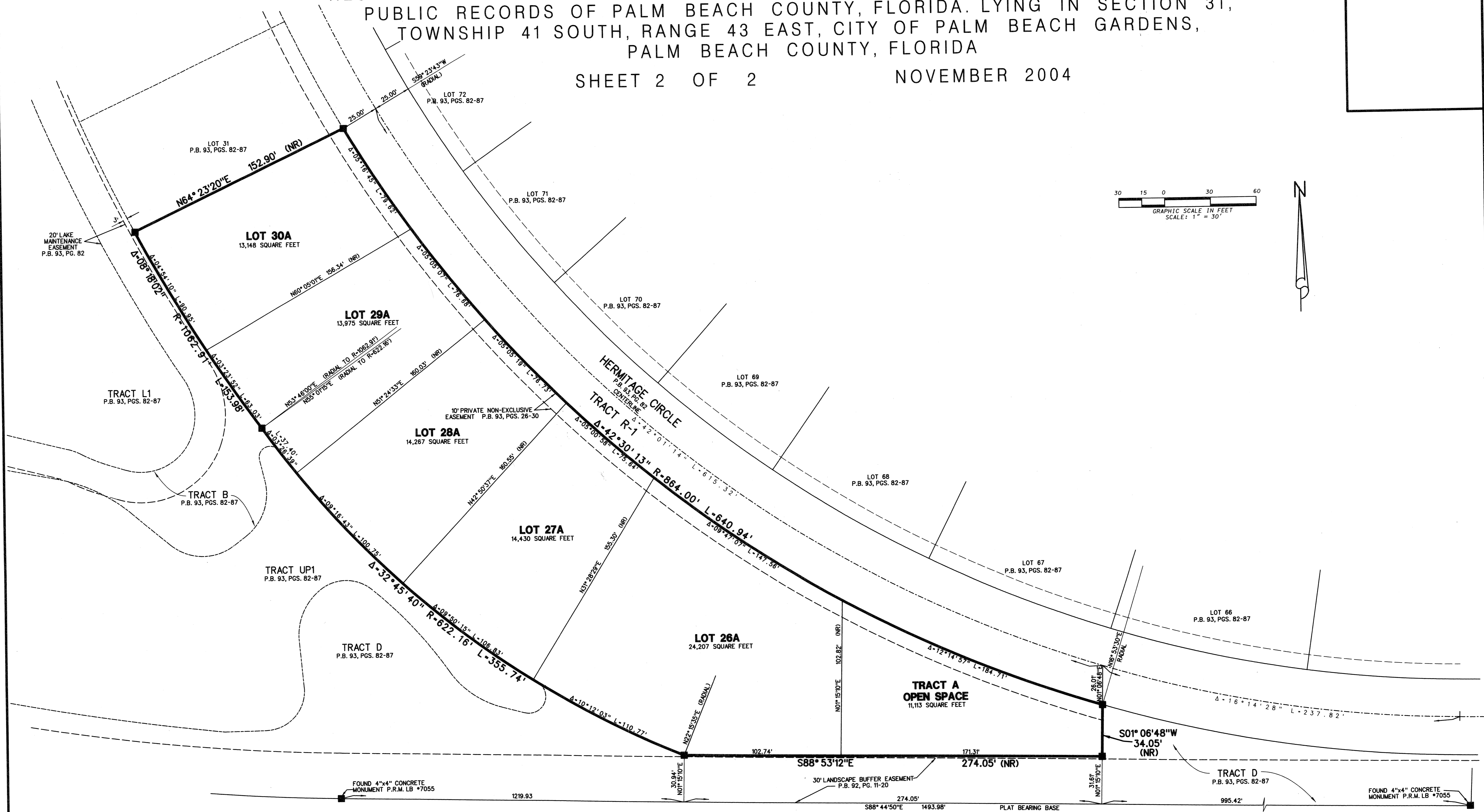
# FRENCHMAN'S RESERVE PCD-PLAT F REPLAT

158

BEING A REPLAT OF LOTS 26 THROUGH 30, ACCORDING TO THE PLAT OF FRENCHMAN'S RESERVE PCD - PLAT F, AS RECORDED IN PLAT BOOK 93, PAGES 82 THROUGH 87, PUBLIC RECORDS OF PALM BEACH COUNTY, FLORIDA. LYING IN SECTION 31, TOWNSHIP 41 SOUTH, RANGE 43 EAST, CITY OF PALM BEACH GARDENS, PALM BEACH COUNTY, FLORIDA

SHEET 2 OF 2

NOVEMBER 2004



**ABBREVIATIONS:**

- C/L = CENTERLINE
- FP&L = FLORIDA POWER & LIGHT
- R = RADIUS
- Δ = DELTA ANGLE
- L = ARC LENGTH
- LAE = LIMITED ACCESS EASEMENT
- LB = LICENSE BUSINESS
- ORB = OFFICIAL RECORD BOOK
- PB = PLAT BOOK
- PG = PAGE(S)
- PRM = PERMANENT REFERENCE MONUMENT
- UE = UTILITY EASEMENT
- P.O.B. = POINT OF BEGINNING
- P.O.C. = POINT OF COMMENCEMENT

**LIDBERG LAND SURVEYING, INC.**  
 LB4431 675 West Indiantown Road, Suite 200, Jupiter, Florida 33458 TEL. 561-746-8454

CAD. K:\UST \ 314143 \ 1554.306 \ 1554306.DGN			
REF.			
FLD. R.B.	FB.	PG.	JDB 04-155-306
OFF. D.C.L./L.J.C.			DATE 09/29/04
CKD. D.C.L.	SHEET 2	OF 2	DWG. D04-155P