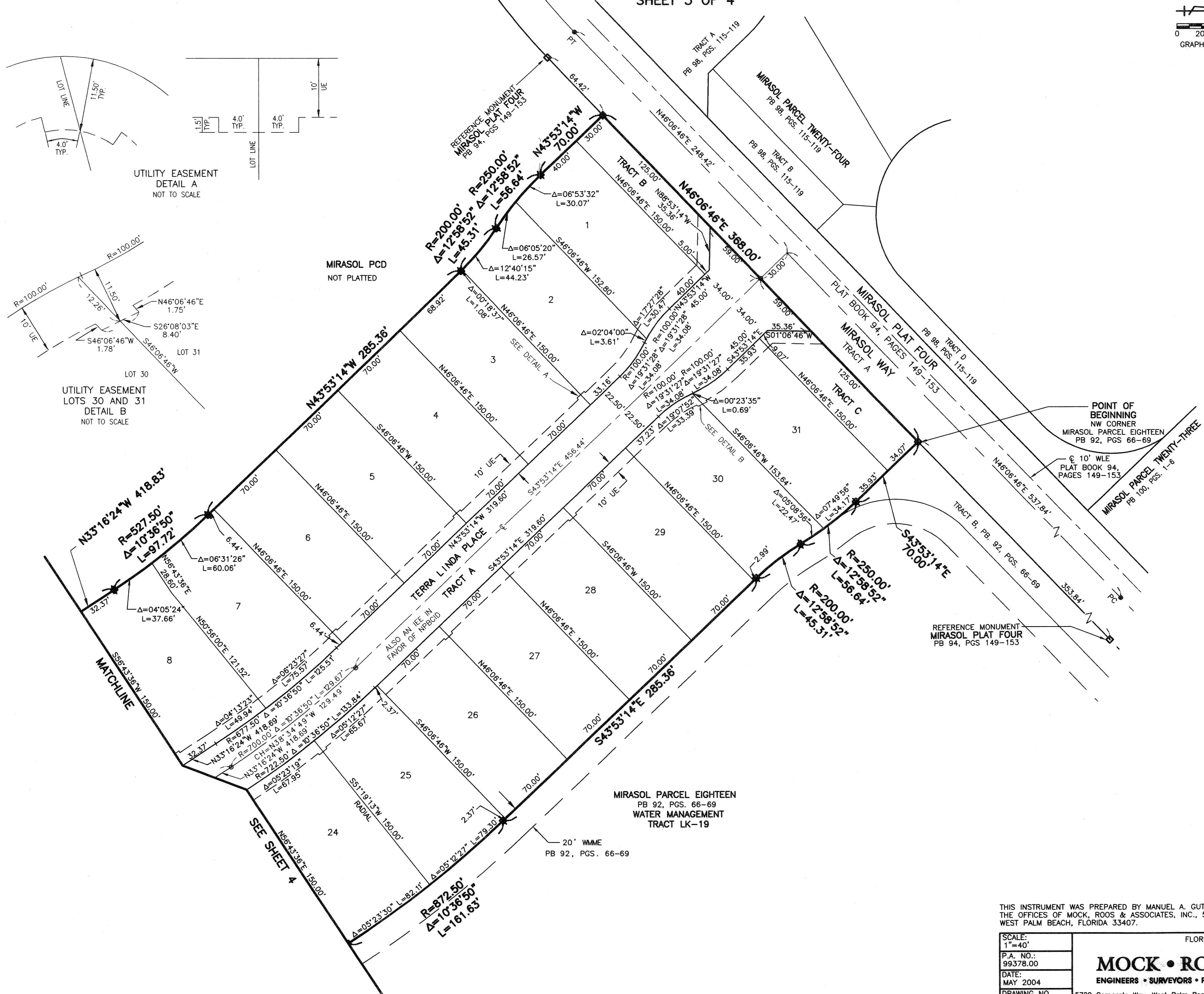
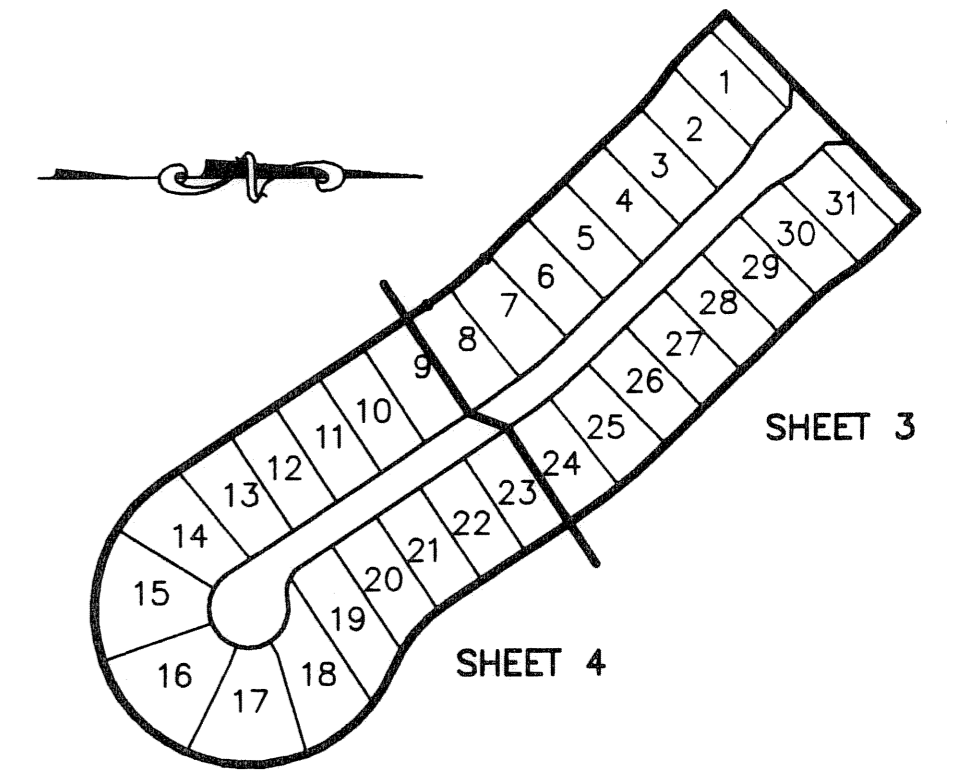
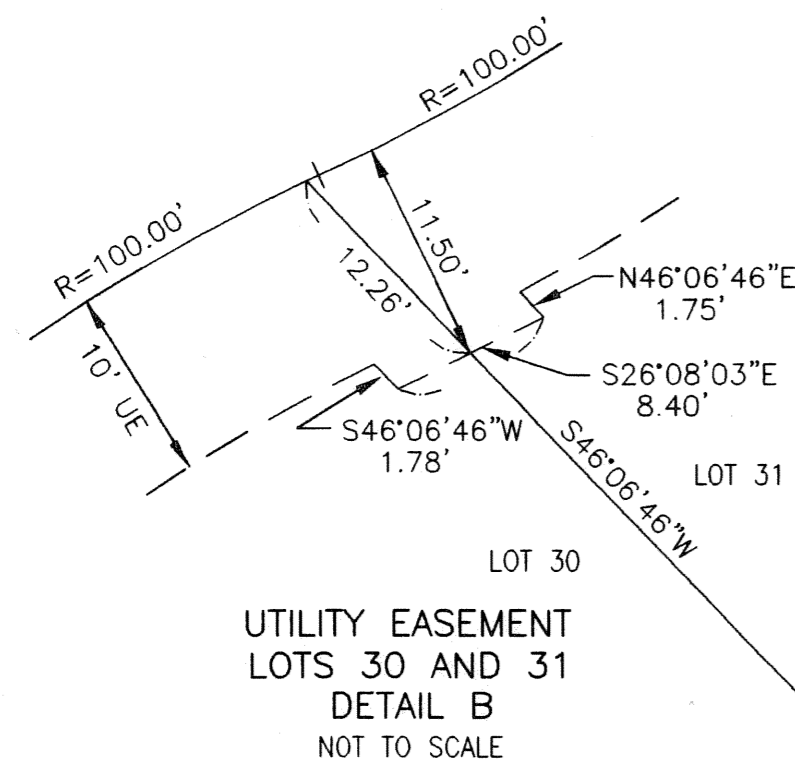
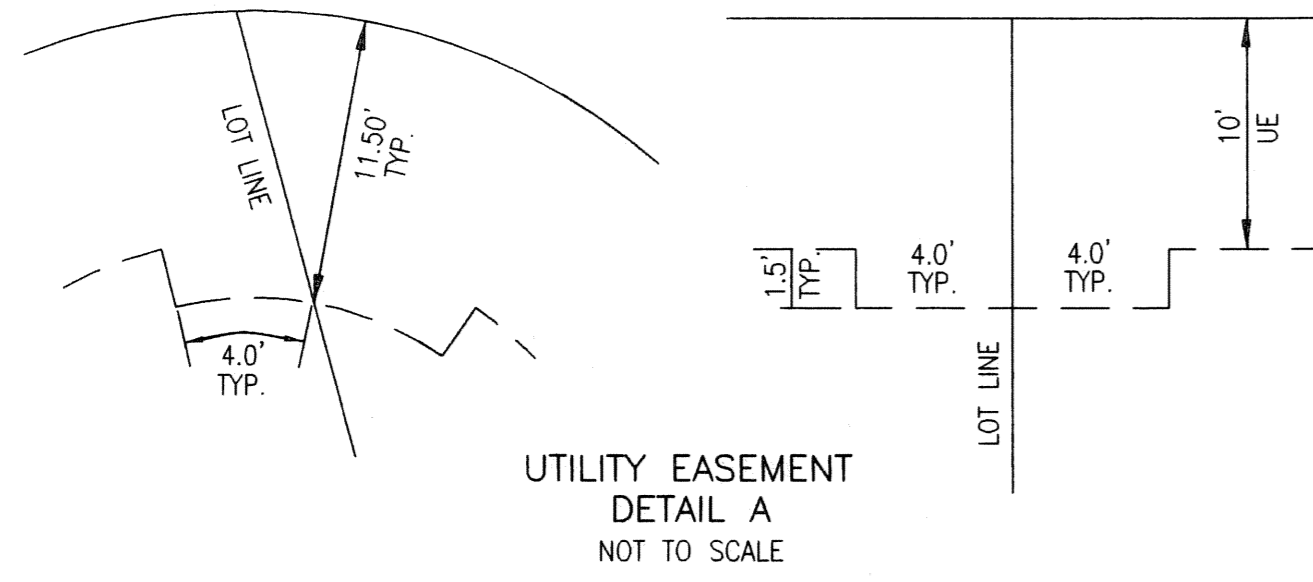
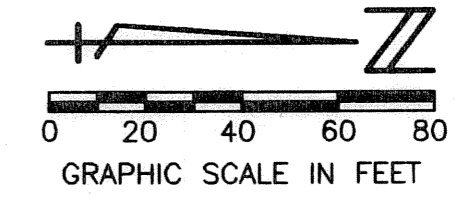


MIRASOL PARCEL SEVENTEEN

PART OF MIRASOL P.C.D.
BEING IN SECTION 03, TOWNSHIP 42 SOUTH, RANGE 42 EAST,
CITY OF PALM BEACH GARDENS,
PALM BEACH COUNTY, FLORIDA
SHEET 3 OF 4

163

STATE OF FLORIDA
COUNTY OF PALM BEACH
THIS PLAT WAS FILED FOR
RECORD _____ DAY OF _____
AD, 2004 AND DULY RECORDED
IN PLAT BOOK _____ ON PAGES
_____ AND _____
DOROTHY H. WILKEN, CLERK
BY: _____ D.C.



LEGEND

Δ	CENTRAL (DELTA) ANGLE
CH	CHORD
C/L	CENTERLINE
CPE	CURT PATH EASEMENT
DE	DRAINAGE EASEMENT
IEE	INGRESS-EGRESS EASEMENT
L	ARC LENGTH
NPBCID	NORTHERN PALM BEACH COUNTY IMPROVEMENT DISTRICT
ORB	OFFICIAL RECORD BOOK
PAE	PEDESTRIAN ACCESS EASEMENT
PB	PLAT BOOK
PC	POINT OF CURVATURE
P.C.D.	PLANNED COMMUNITY DEVELOPMENT
PG	PAGE
PT	POINT OF TANGENCY
R	RADIUS
UE	UTILITY EASEMENT
WLE	WATER LINE EASEMENT
WMME	WATER MANAGEMENT MAINTENANCE EASEMENT
□	PERMANENT REFERENCE MONUMENT FOUND LB 048 (4"x4" CONCRETE)
■	PERMANENT REFERENCE MONUMENT SET LB 048 (4"x4" CONCRETE)
○	PERMANENT CONTROL POINT SET LB 048
⊙	CENTERLINE

THIS INSTRUMENT WAS PREPARED BY MANUEL A. GUTIERREZ, P.S.M. IN THE OFFICES OF MOCK, ROOS & ASSOCIATES, INC., 5720 CORPORATE WAY, WEST PALM BEACH, FLORIDA 33407.

SCALE: 1"=40'	FLORIDA L.B. NO. 48
P.A. NO.: 99378.00	MOCK • ROOS ENGINEERS • SURVEYORS • PLANNERS
DATE: MAY 2004	
DRAWING NO.: 42-42-03-118	
5720 Corporate Way, West Palm Beach, Florida 33407 (561) 683-3113, fax 478-7248	

MIRASOL PARCEL SEVENTEEN
PART OF MIRASOL P.C.D.
BEING IN SECTION 03,
TOWNSHIP 42 SOUTH, RANGE 42 EAST,
CITY OF PALM BEACH GARDENS,
PALM BEACH COUNTY, FLORIDA

S:\toy\lay\pa17.dwg\pa17rp02.dwg 12/2/2004 7:27:08 AM EST

REVISED 12-02-04
CAD FILE:
TAYLPA17\PA17RP02