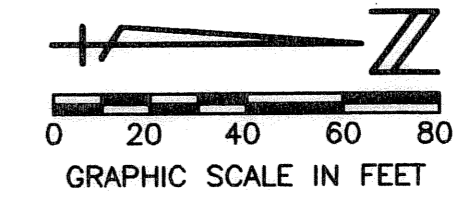


# MIRASOL PARCEL SEVENTEEN

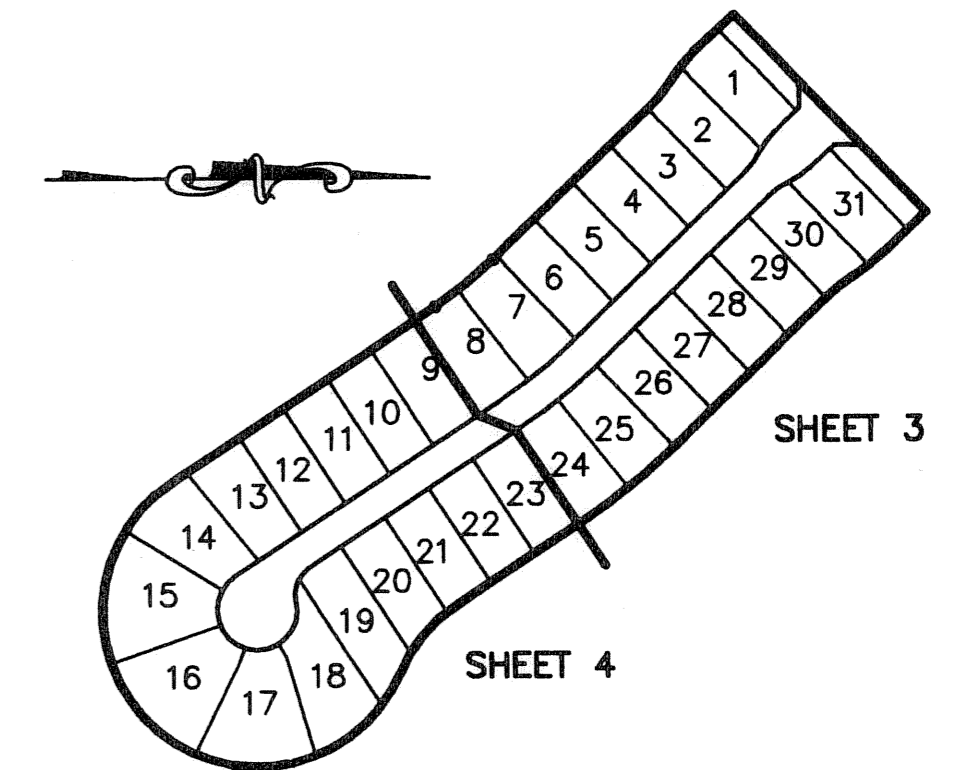
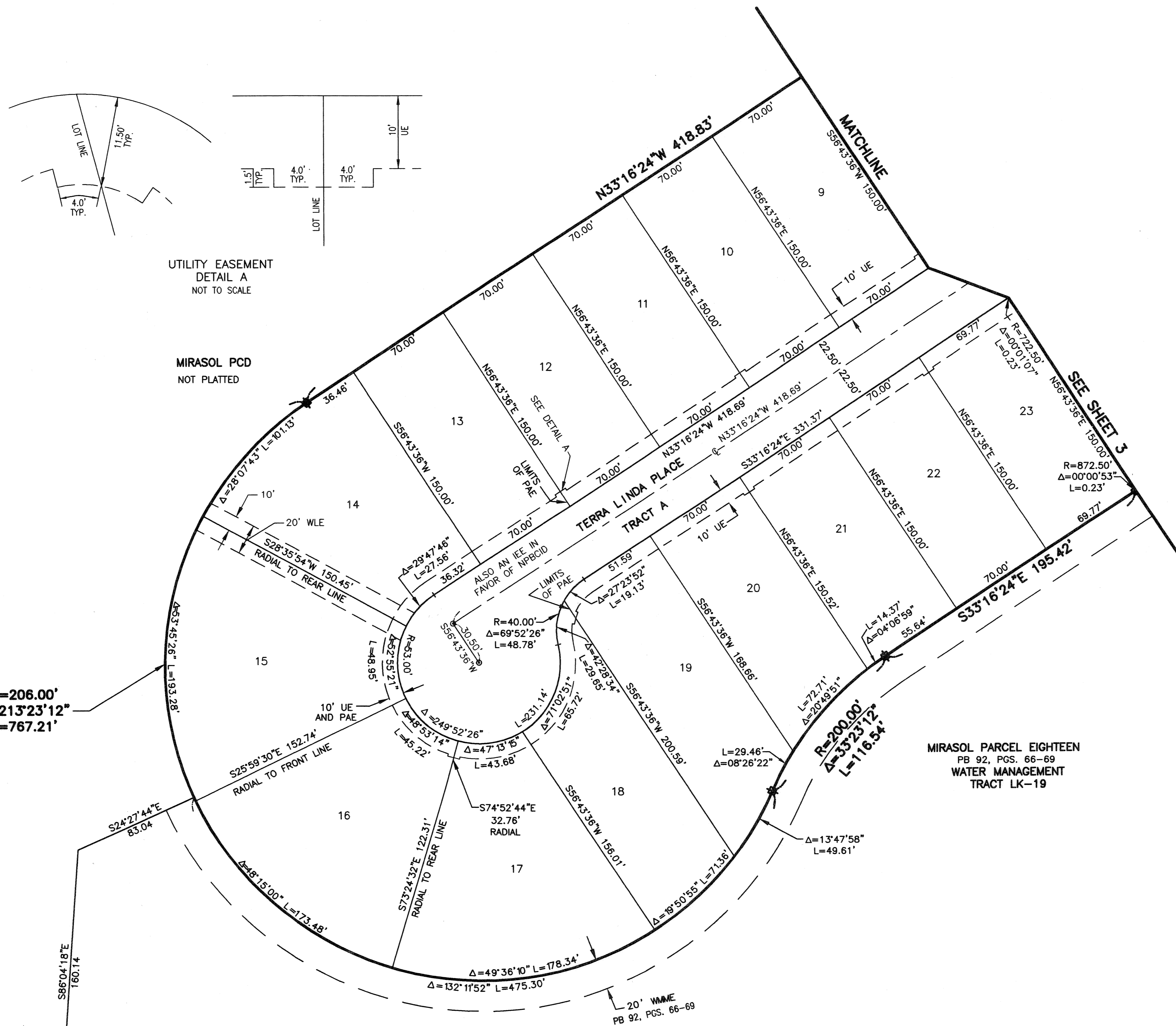
PART OF MIRASOL P.C.D.  
BEING IN SECTION 03, TOWNSHIP 42 SOUTH, RANGE 42 EAST,  
CITY OF PALM BEACH GARDENS,  
PALM BEACH COUNTY, FLORIDA  
SHEET 4 OF 4

164

STATE OF FLORIDA  
COUNTY OF PALM BEACH  
THIS PLAT WAS FILED FOR  
RECORD \_\_\_\_\_  
THIS \_\_\_\_\_ DAY OF \_\_\_\_\_  
AD, 2004 AND DULY RECORDED  
IN PLAT BOOK \_\_\_\_\_ ON PAGES  
\_\_\_\_\_ AND \_\_\_\_\_  
DOROTHY H. WILKEN, CLERK  
BY: \_\_\_\_\_, D.C.



CIRCUIT COURT SEAL



SHEET LOCATION MAP  
NOT TO SCALE

**LEGEND**

Δ	CENTRAL (DELTA) ANGLE
CH	CHORD
C/L	CENTERLINE
CPE	CART PATH EASEMENT
DE	DRAINAGE EASEMENT
IEE	INGRESS-EGRESS EASEMENT
L	ARC LENGTH
NPBCID	NORTHERN PALM BEACH COUNTY IMPROVEMENT DISTRICT
ORB	OFFICIAL RECORD BOOK
P/AE	PEDESTRIAN ACCESS EASEMENT
PB	PLAT BOOK
PC	POINT OF CURVATURE
P.C.D.	PLANNED COMMUNITY DEVELOPMENT
PG	PAGE
R	RADIUS
UE	UTILITY EASEMENT
WLE	WATER LINE EASEMENT
WMME	WATER MANAGEMENT MAINTENANCE EASEMENT
□	PERMANENT REFERENCE MONUMENT FOUND LB 048 (4"x4" CONCRETE)
■	PERMANENT REFERENCE MONUMENT SET LB 048 (4"x4" CONCRETE)
⊙	PERMANENT CONTROL POINT SET LB 048
⊖	CENTERLINE

MIRASOL PARCEL EIGHTEEN  
PB 92, PGS. 66-69  
WATER MANAGEMENT  
TRACT LK-19

THIS INSTRUMENT WAS PREPARED BY MANUEL A. GUTIERREZ, P.S.M. IN THE OFFICES OF MOCK, ROOS & ASSOCIATES, INC., 5720 CORPORATE WAY, WEST PALM BEACH, FLORIDA 33407.

SHEET 4 OF 4

SCALE:	1"=40'
P.A. NO.:	99378.00
DATE:	MAY 2004
DRAWING NO.:	42-42-03-118

FLORIDA L.B. NO. 48

**MOCK • ROOS**  
ENGINEERS • SURVEYORS • PLANNERS

5720 Corporate Way, West Palm Beach, Florida 33407  
(561) 683-3113, fax 478-7248

**MIRASOL PARCEL SEVENTEEN**  
PART OF MIRASOL P.C.D.  
BEING IN SECTION 03,  
TOWNSHIP 42 SOUTH, RANGE 42 EAST,  
CITY OF PALM BEACH GARDENS,  
PALM BEACH COUNTY, FLORIDA

S:\toy\pa17\dwg\pa17rp02.dwg 8/18/2004 7:59:52 AM EDT

CAD FILE:  
TAYLPA17\PA17RP02