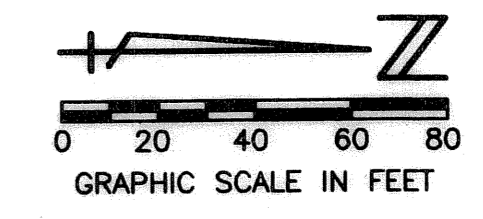


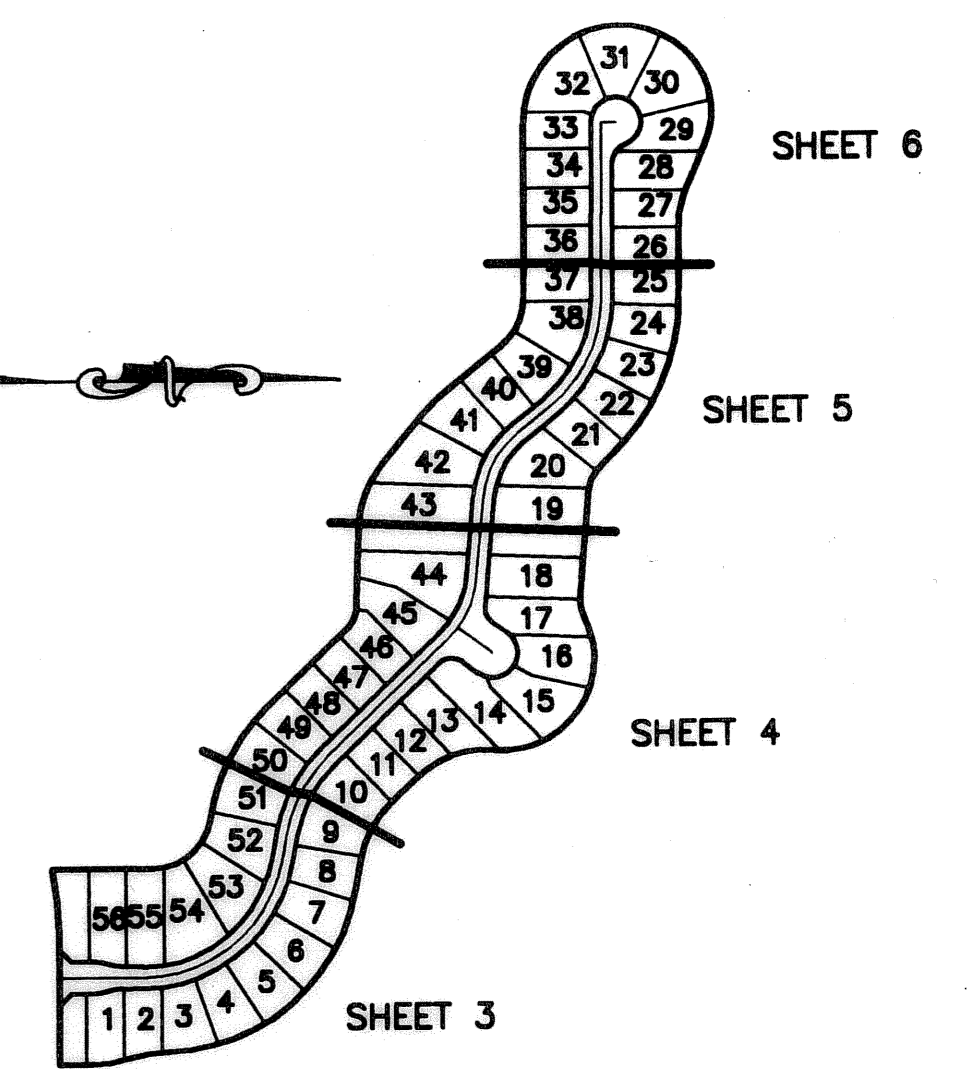
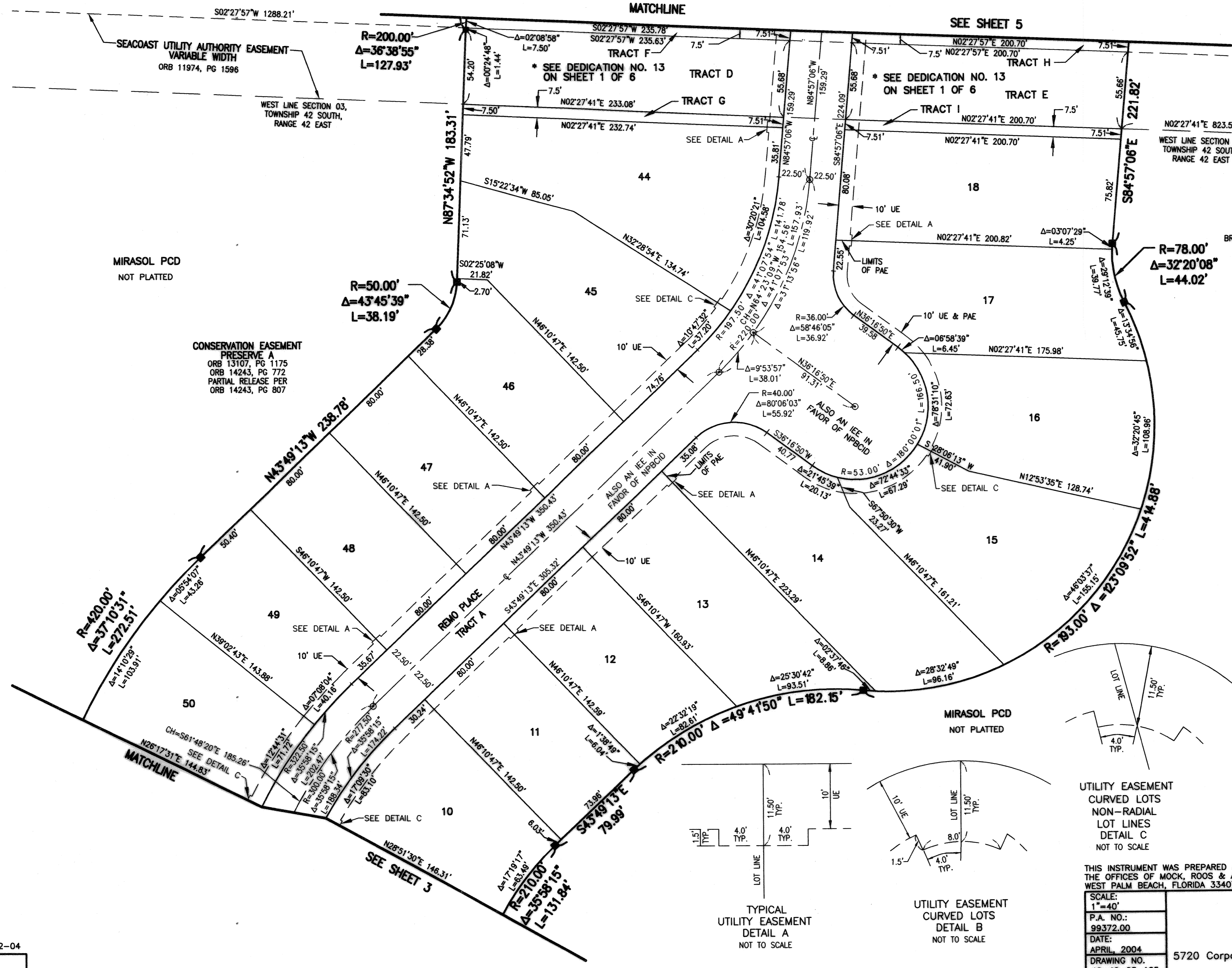
MIRASOL PARCEL TWENTY-FIVE

PART OF MIRASOL P.C.D.
BEING IN SECTIONS 03 AND 04, TOWNSHIP 42 SOUTH, RANGE 42 EAST,
CITY OF PALM BEACH GARDENS,
PALM BEACH COUNTY, FLORIDA
SHEET 4 OF 6

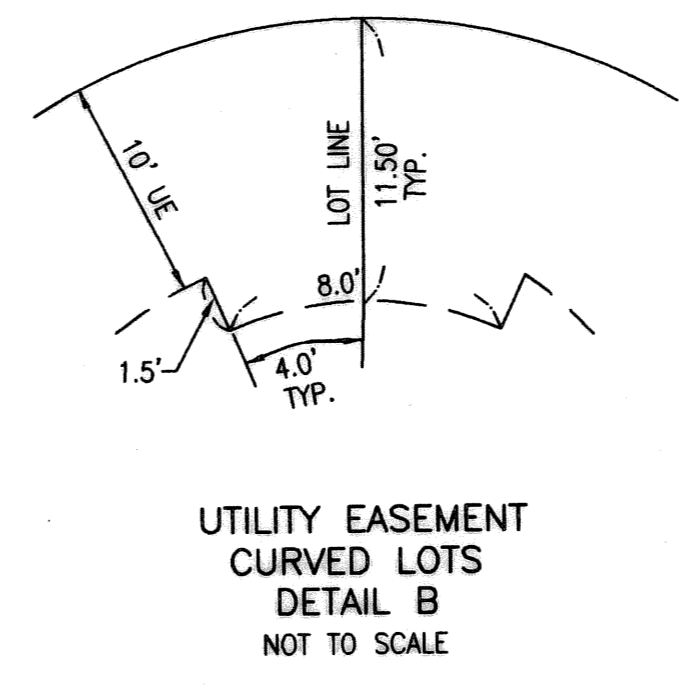
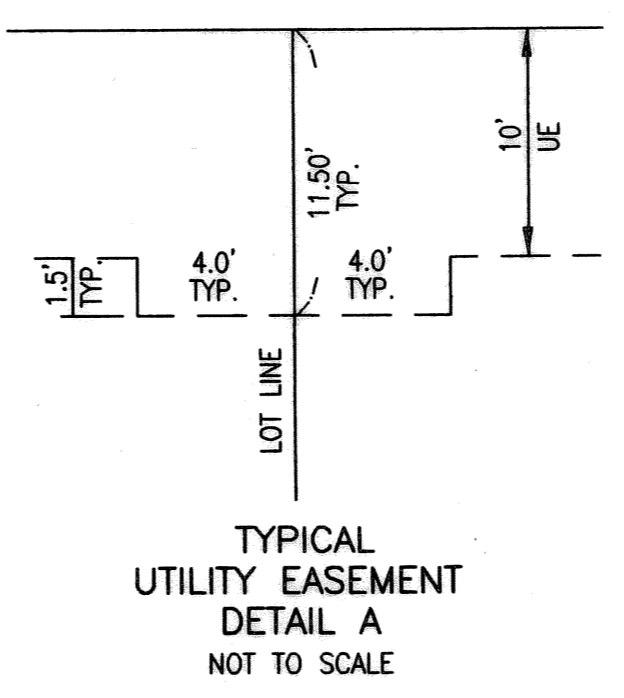
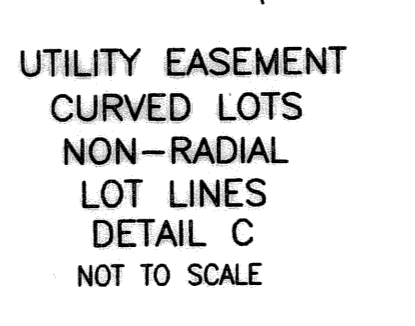
STATE OF FLORIDA
COUNTY OF PALM BEACH
THIS PLAT WAS FILED FOR
RECORD _____ DAY OF _____
AD, 2004 AND DULY RECORDED
IN PLAT BOOK _____ ON PAGES
_____ AND _____
DOROTHY H. WILKEN, CLERK
BY: _____, D.C.



CIRCUIT COURT SEAL



- LEGEND**
- Δ CENTRAL (DELTA) ANGLE
 - CH CHORD BEARING AND DISTANCE
 - DE DRAINAGE EASEMENT
 - IEE INGRESS-EGRESS EASEMENT
 - LME LAKE MAINTENANCE EASEMENT
 - L ARC LENGTH
 - NPBCID NORTHERN PALM BEACH COUNTY IMPROVEMENT DISTRICT OFFICIAL RECORD BOOK
 - ORB OFFICIAL RECORD BOOK
 - PAE PEDESTRIAN ACCESS EASEMENT
 - PB PLAT BOOK
 - PCD PLANNED COMMUNITY DEVELOPMENT
 - PG(S) PAGE(S)
 - R RADIUS
 - SLE SEWER LINE EASEMENT
 - UE UTILITY EASEMENT
 - WLE WATER LINE EASEMENT
 - WME WATER MANAGEMENT MAINTENANCE EASEMENT
 - NAIL AND DISK PRM SET LB 048
 - PERMANENT REFERENCE MONUMENT SET LB 048 (4"x4" CONCRETE)
 - ⊕ PERMANENT CONTROL POINT SET LB 048
 - ⊖ CENTERLINE
 - ⊕ SECTION CORNER



THIS INSTRUMENT WAS PREPARED BY MANUEL A. GUTIERREZ, P.S.M. IN THE OFFICES OF MOCK, ROOS & ASSOCIATES, INC., 5720 CORPORATE WAY, WEST PALM BEACH, FLORIDA 33407.

SCALE:
1"=40'
P.A. NO.:
99372.00
DATE:
APRIL, 2004
DRAWING NO.:
42-42-03-125

MOCK • ROOS
ENGINEERS • SURVEYORS • PLANNERS

5720 Corporate Way, West Palm Beach, Florida 33407
(561) 683-3113, fax 478-7248

MIRASOL PARCEL TWENTY-FIVE
PART OF MIRASOL P.C.D.
BEING IN SECTIONS 03 AND 04,
TOWNSHIP 42 SOUTH, RANGE 42 EAST,
CITY OF PALM BEACH GARDENS,
PALM BEACH COUNTY, FLORIDA

REV 12-02-04
CADD FILE:
S:\proj\104205\104205.dwg
10/22/04