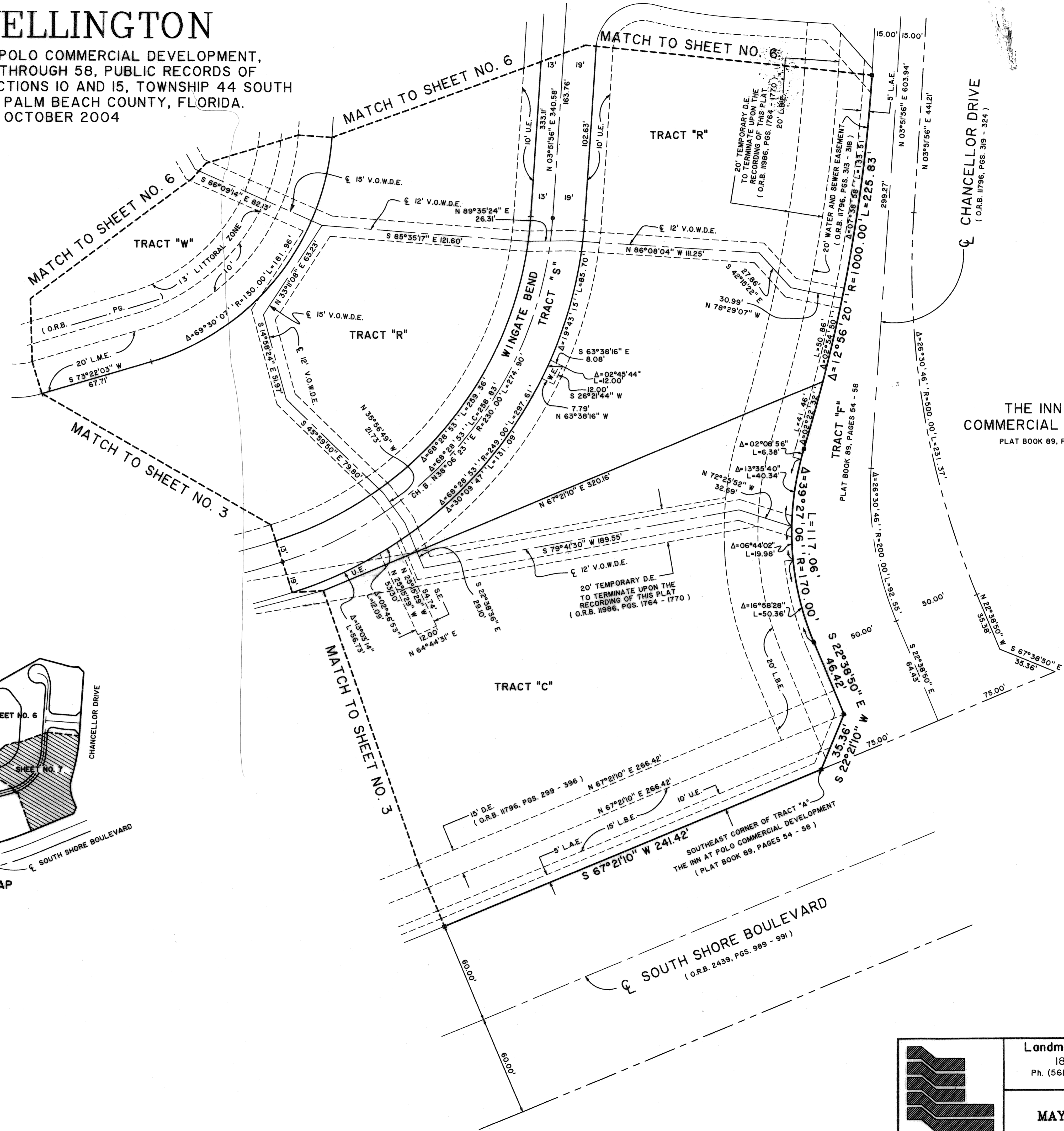
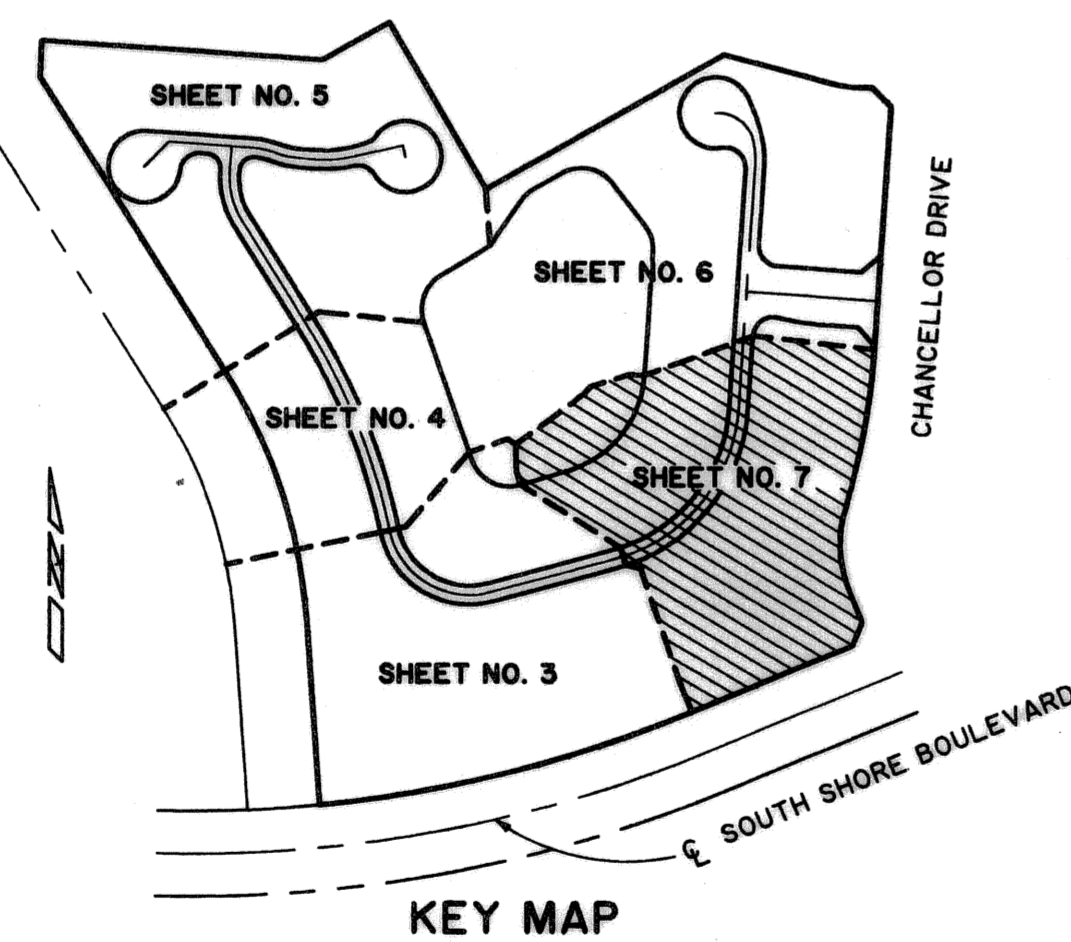
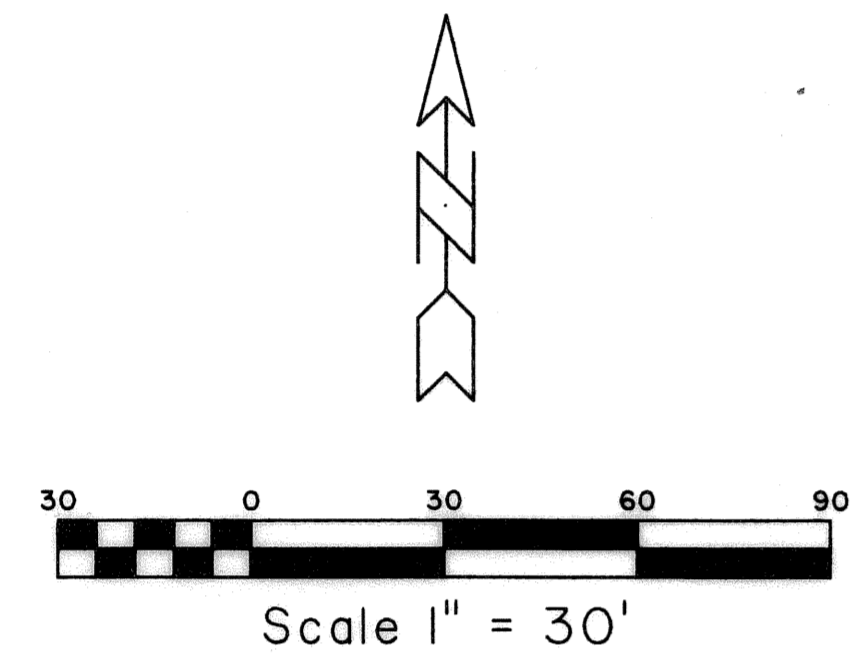


# MAYFAIR AT WELLINGTON

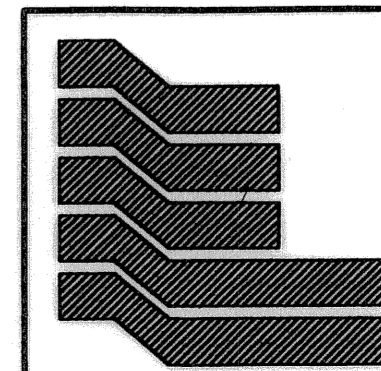
BEING A REPLAT OF TRACT "A", THE INN AT POLO COMMERCIAL DEVELOPMENT,  
AS RECORDED IN PLAT BOOK 89, PAGES 54 THROUGH 58, PUBLIC RECORDS OF  
PALM BEACH COUNTY, FLORIDA AND LYING IN SECTIONS 10 AND 15, TOWNSHIP 44 SOUTH  
RANGE 41 EAST, VILLAGE OF WELLINGTON, PALM BEACH COUNTY, FLORIDA.  
SHEET 7 OF 7 OCTOBER 2004

177

STATE OF FLORIDA SS  
COUNTY OF PALM BEACH  
THIS PLAT WAS FILED FOR RECORD AT \_\_\_\_\_  
M, THIS \_\_\_\_\_ DAY OF \_\_\_\_\_ 2004  
AND DULY RECORDED IN PLAT BOOK NO. \_\_\_\_\_  
ON PAGE \_\_\_\_\_  
DOROTHY H. WILKEN, CLERK OF THE CIRCUIT COURT  
BY \_\_\_\_\_ D.C.



THE INN AT POLO  
COMMERCIAL DEVELOPMENT  
PLAT BOOK 89, PAGES 54 - 58



Landmark Surveying & Mapping Inc.  
1850 Forest Hill Boulevard  
Ph. (561) 433-5405 Suite 100 W.P.B. Florida  
LB # 4396

MAYFAIR AT WELLINGTON