

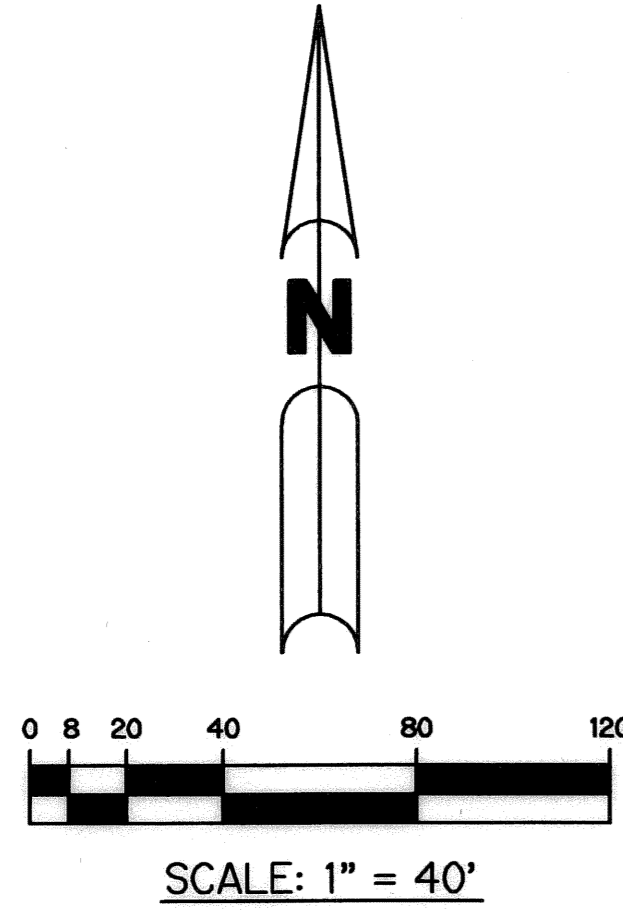
CANYON LAKES (A.K.A. FOGG) PLANNED UNIT DEVELOPMENT

CANYON LAKES - PLAT FIVE

BEING A REPLAT OF A PORTION OF TRACTS 73, 88, 89, 103, 104, 105, 120, & 123, AND ALL OF TRACTS 121 & 122 AND A PORTION OF A ROAD, DYKE AND DITCH RESERVATION, 30.00 FEET IN WIDTH, ALL LYING IN BLOCK 54, PALM BEACH FARMS COMPANY PLAT NO. 3, ACCORDING TO THE PLAT THEREOF, RECORDED IN PLAT BOOK 2, PAGES 45 THROUGH 54 OF THE PUBLIC RECORDS OF PALM BEACH COUNTY, FLORIDA, LYING IN SECTIONS 29 AND 32, TOWNSHIP 45 SOUTH, RANGE 42 EAST, PALM BEACH COUNTY, FLORIDA

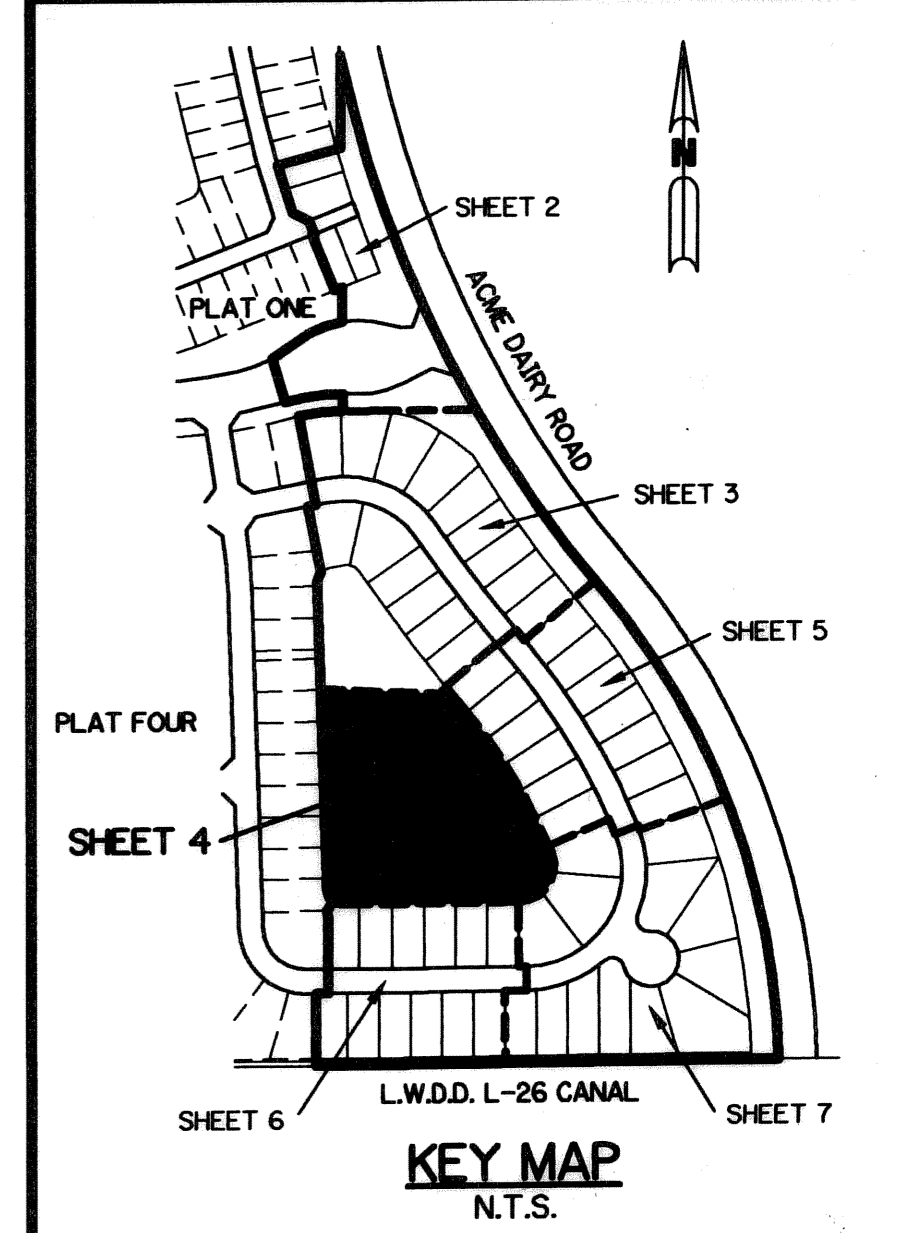
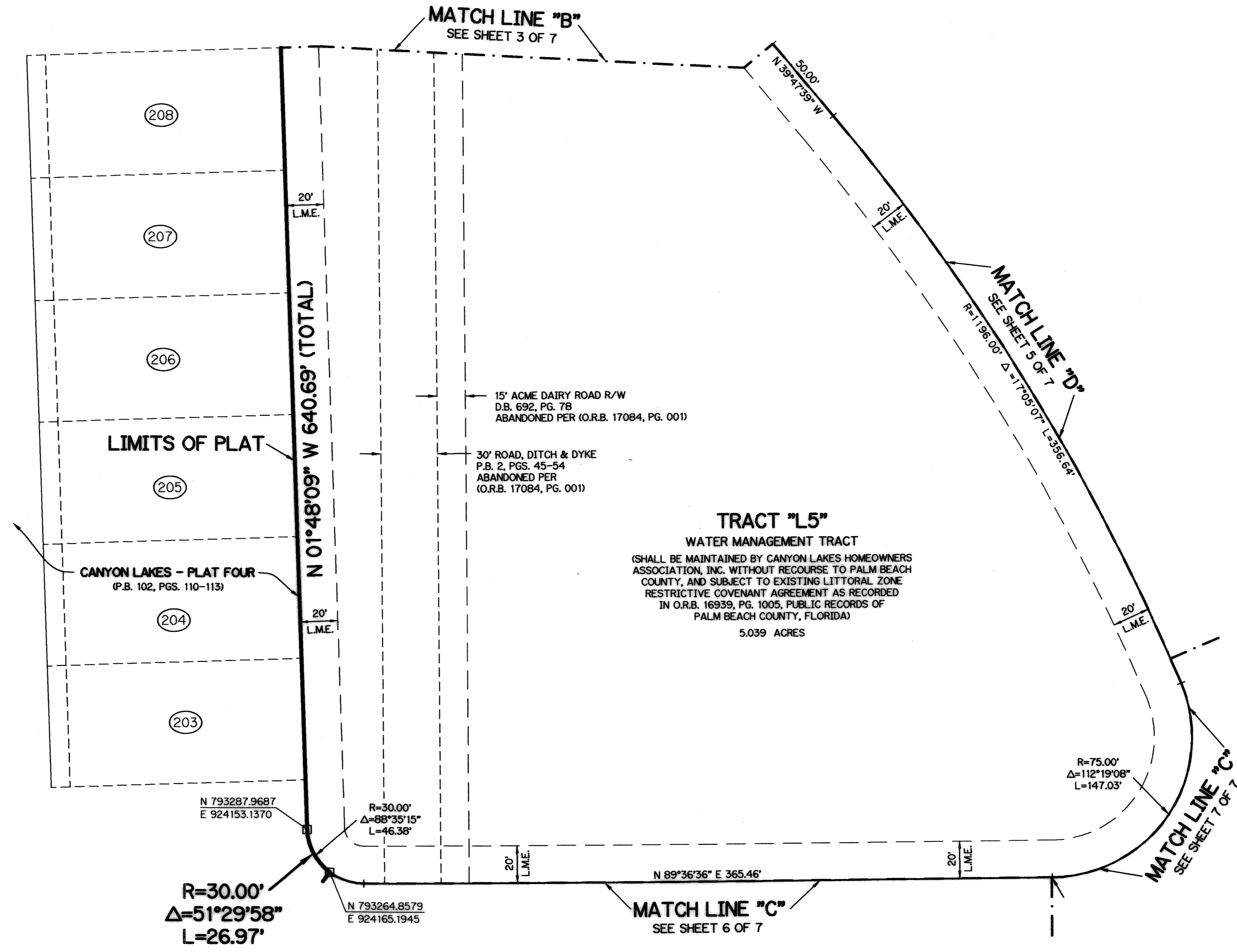
THIS INSTRUMENT PREPARED BY
 PERRY C. WHITE, P.S.M. 4213, STATE OF FLORIDA
 LAWSON, NOBLE AND WEBB, INC.
 ENGINEERS PLANNERS SURVEYORS
 420 COLUMBIA DRIVE
 WEST PALM BEACH, FLORIDA 33409
 LB-6674

SHEET 4 OF 7 AUGUST, 2004



- LEGEND:**
- - SET PERMANENT REFERENCE MONUMENT, L.B. #6674
 - - FOUND PERMANENT REFERENCE MONUMENT, L.B. #6674
 - - SET PERMANENT CONTROL POINT, L.B. #6674
 - - FOUND PERMANENT CONTROL POINT, L.B. #6674
 - Δ - DELTA ANGLE
 - B.E. - BUFFER EASEMENT
 - CB - CHORD BEARING
 - CH - CHORD DISTANCE
 - C - CENTERLINE
 - D.B. - DEED BOOK
 - D.E. - DRAINAGE EASEMENT
 - GND. - GROUND
 - L - ARC LENGTH
 - L.A.E. - LIMITED ACCESS EASEMENT
 - L.M.A.E. - LAKE MAINTENANCE ACCESS EASEMENT
 - L.M.E. - LAKE MAINTENANCE EASEMENT
 - L.W.D.D. - LAKE WORTH DRAINAGE DISTRICT
 - N.R. - NOT RADIAL
 - N.T.S. - NOT TO SCALE
 - O.R.B. - OFFICIAL RECORD BOOK
 - P.B. - PLAT BOOK
 - P.C. - POINT OF CURVATURE
 - P.C.P. - PERMANENT CONTROL POINT
 - PGS. - PAGES
 - P.O.B. - POINT OF BEGINNING
 - P.O.C. - POINT OF COMMENCEMENT
 - P.S.M. - PROFESSIONAL SURVEYOR AND MAPPER
 - P.T. - POINT OF TANGENCY
 - R - RADIUS
 - RAD. - RADIAL
 - R/W - RIGHT-OF-WAY
 - TYP. - TYPICAL
 - U.E. - UTILITY EASEMENT
 - N 1000000.0000
E 1000000.0000 - DENOTES STATE PLANE COORDINATES

NOTE:
 COORDINATES SHOWN ARE GRID COORDINATES
 DATUM = NAD 83 (1990 ADJUSTMENT)
 ZONE = FLORIDA EAST ZONE
 LINEAR UNIT = U.S. SURVEY FEET
 COORDINATE SYSTEM = 1983 STATE PLANE
 TRANSVERSE MERCATOR PROJECTION
 ALL DISTANCES ARE GROUND
 SCALE FACTOR = 1.0000227
 PLAT BEARING = GRID BEARING
 NO ROTATION



SUBDIVISION CANYON LAKES - PL 5
 BOOK 103 PAGE 105 FLOOD MAP # 185A
 FLOOD ZONE B ZONING PDD
 QUAD # 50 ZIP CODE 33409-7
 SE
 TAZ 149
 PUD NAME FOGG NORTH