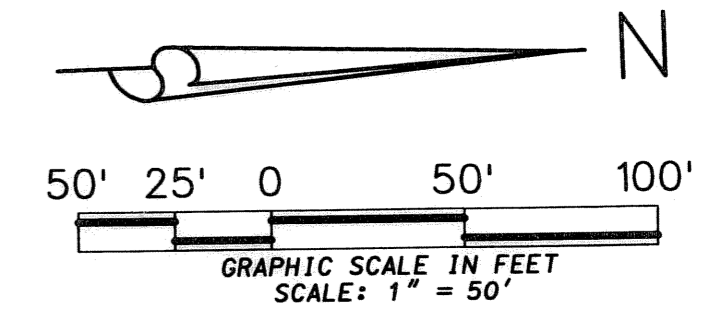


PGA COMMONS PLAT NO. 4

LYING IN SECTION 11, TOWNSHIP 42 SOUTH, RANGE 42 EAST,
CITY OF PALM BEACH GARDENS, PALM BEACH COUNTY, FLORIDA

JANUARY 2005

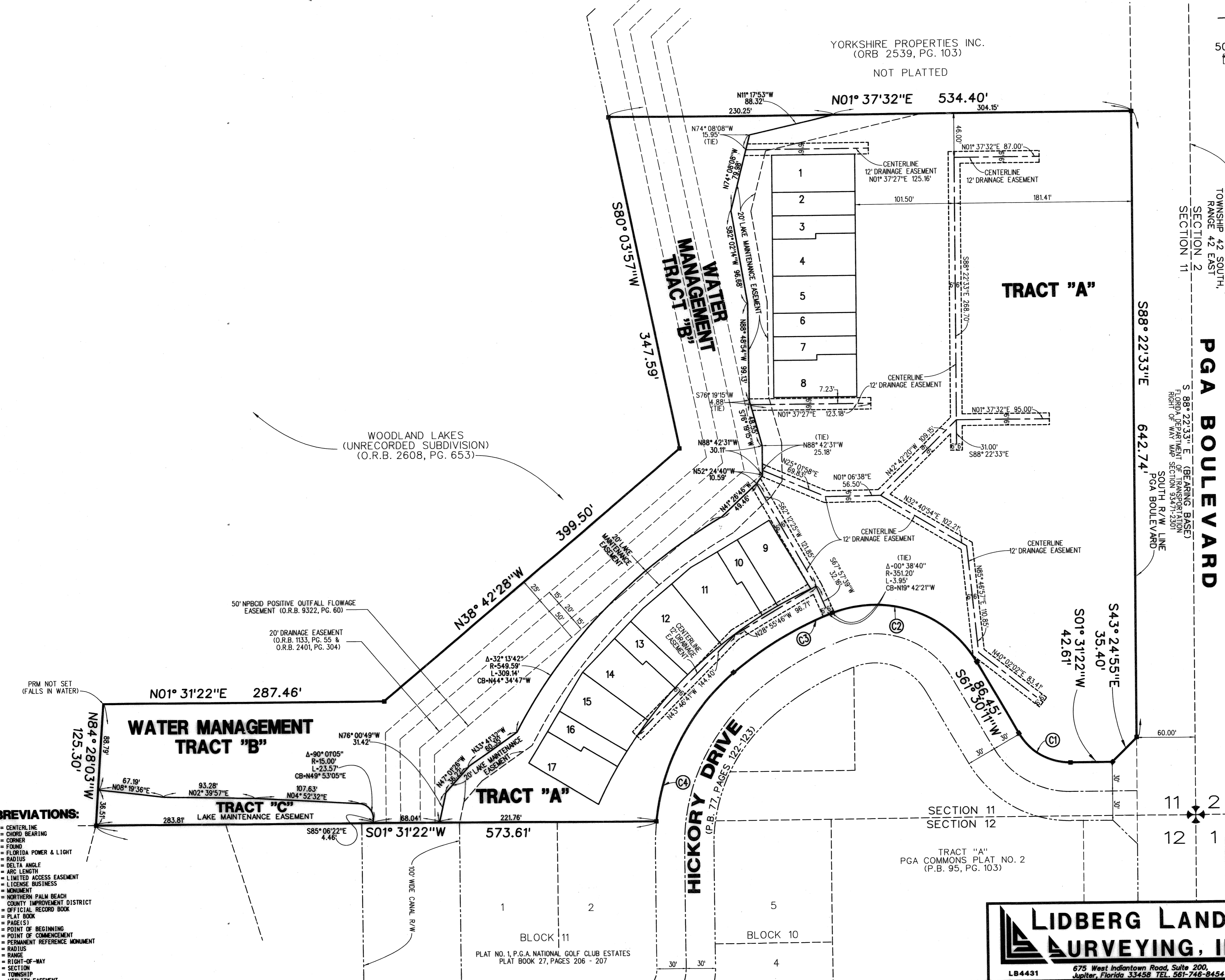
SHEET 3 OF 3



CURVE TABLE					
CURVE NO.	RADIUS	DELTA ANGLE	ARC LENGTH	CHORD BEARING	CHORD LENGTH
1	60.00'	59°58'49"	62.81'	S 31°30'47" W	59.98'
2	120.00'	80°53'12"	169.41'	S 21°03'35" W	155.69'
3	351.20'	19°19'54"	118.50'	S 29°02'58" E	117.93'
4	231.72'	43°34'11"	176.21'	S 60°30'01" E	171.99'

YORKSHIRE PROPERTIES INC.
(ORB 2539, PG. 103)

NOT PLATTED



NORTH LINE SECTION 11,
TOWNSHIP 42 SOUTH,
RANGE 42 EAST

PGA BOULEVARD
S 88° 22' 33" E (BEARING BASED)
SECTION 11
SECTION 12
SOUTH R/W LINE
PGA BOULEVARD

DRAINAGE EASEMENTS DETAIL SHEET

- ABBREVIATIONS:**
- C/L = CENTERLINE
 - CB = CHORD BEARING
 - CR = CORNER
 - FND = FOUND
 - FPL = FLORIDA POWER & LIGHT
 - R = RADIUS
 - Δ = DELTA ANGLE
 - L = ARC LENGTH
 - LAE = LIMITED ACCESS EASEMENT
 - LB = LICENSE BUSINESS
 - MON = MONUMENT
 - NPBCID = NORTHERN PALM BEACH COUNTY IMPROVEMENT DISTRICT
 - ORB = OFFICIAL RECORD BOOK
 - PB = PLAT BOOK
 - PG = PAGE(S)
 - POB = POINT OF BEGINNING
 - POC = POINT OF COMMENCEMENT
 - PRM = PERMANENT REFERENCE MONUMENT
 - R = RADIUS
 - RGE = RANGE
 - R/W = RIGHT-OF-WAY
 - SEC = SECTION
 - TWP = TOWNSHIP
 - UE = UTILITY EASEMENT
 - S.U.A. = SEACOAST UTILITY AUTHORITY

LIDBERG LAND SURVEYING, INC.
LB4431 675 West Indiantown Road, Suite 200, Jupiter, Florida 33458 TEL. 561-748-9454

CAD: K:\UST \ 114242 \ 00-193 \ 1930306-2.DGN			
REF.	FB.	PG.	JOB 00-193 (306)
FLD.	CASASUS		DATE NOVEMBER 2004
OFF.			DWG. D00-193P
CKD. DCL	SHEET 3	OF 3	